

WEATHER RESISTANT STREET SIGNPRO



WEATHER-RESISTANT SIDEWALK SIGNS WITH MAGNETIC SEAL PROTECTION

Made of durable plastic, the Weather Resistant Street SignPro is a premium outdoor double-sided sign frame designed to hold two posters in size 24" (W) x 36" (H). The recessed sign area helps protect poster surfaces, while the magnetic pocket system securely seals the posters inside, preventing them from getting wet and ensuring reliable weather resistance. The frame is built with a molded-in handle for easy transport and equipped with scissors (hinges) on both sides, which prevent sliding and protect the sign faces. It is also foldable for space-saving storage. Unlike other outdoor signs, there is no need to fill the base with water or sand, as it is already constructed from heavy materials for natural stability. Available in white and black, the Weather Resistant Street SignPro features a UV resistant anti-reflex protective cover that keeps graphics clear, sturdy, and securely in place. A discreet hidden locking system further protects the posters by preventing unnecessary access. Combined with the magnetic sealing edges, this unique design ensures long-lasting durability, stability, and weather protection in demanding outdoor environments.

KEY SELECTION ATTRIBUTES

- Double-sided Street SignPro with Patent Protection (PCT/EP2017/052765).
- Durable double-sided HDPE plastic boards with hinged aluminum lens frames and anti-reflex graphic protection.
- Two protective pockets with magnetic edges to keep posters secure and weather resistant.
- Hidden locking mechanism prevents unauthorized access to posters.
- Molded-in handle and built-in wheels for easy transport.
- Flat-folding scissors (hinges) on both sides for stability and space-saving storage.
- Suitable for outdoor use with poster size 24" (W) x 36" (H).
- Supports posters with standard thickness 0.0078" and maximum thickness 0.0314".
- Dual PET anti-reflective poster covers with magnetic edges included as standard; spares available under code UYPSP40000.
- Printing area on header and profiles.
- Available in White and Black and custom RAL colors; custom colors available upon request.
- No need to fill with water or sand; constructed from heavy-duty materials for stability.
- Supplied with an easy-to-understand instruction sheet; no tools required for assembly.

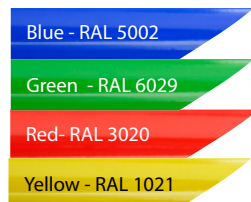


COLOURS IN STOCK



White Black

COLOUR OPTIONS



SUITABLE FOR

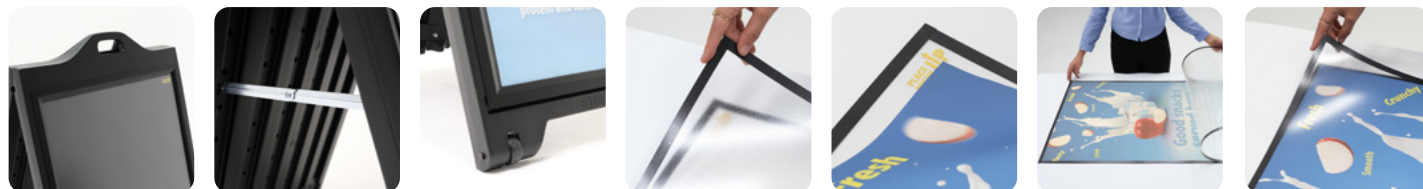
Weather resistant Street SignPro can be used for OUTDOOR applications, for signage needs in many locations like shopping centers, markets, groceries, hotels, offices airports, shops and stores, petrol stations, apartments and many more.

WATCH VIDEO



Watch video at our website
www.mtdisplaysllc.com

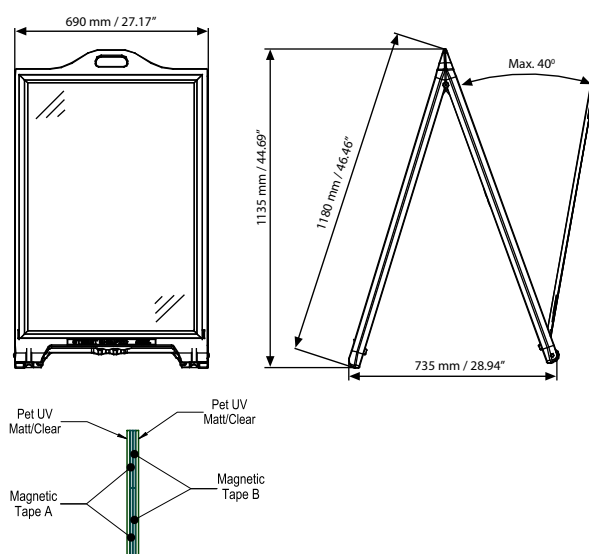
FEATURES



EXPLODED VIEW



TECHNICAL DRAWING



PHYSICAL DATA

Material

Durable plastic HDPE main boards, aluminium frames and dual PET anti-reflex poster covers with magnetic edges.

Poster Thickness

0.0078" in standard. Max. poster thickness is 0.0314". It is placed in between dual protective covers with magnetic edges.

Surface Finish

White and Black in standard and various RAL colors available. with MOQ. MOQ starts from 1000pcs based on the colour. Call for custom color requests.

Recycled Content

Up to 40% recycled content used.

Warranty

All products are guaranteed for 2 years by MT Displays with below conditions:
[Warranty Conditions](#)

Storage Conditions

Goods should be stored at 32°F to 77°F in a dry place. Store in the original package.

Installation Considerations

The Weather Resistant Street SignPro is delivered with an easy-to-follow instruction sheet for quick setup. Each set includes durable double-sided HDPE plastic boards combined with hinged aluminium lens frames and a UV-resistant, anti-reflex insert pocket that keeps posters securely in place. Posters are positioned between two protective covers, while magnetic edges provide additional weather resistance and durability. When inserting the pocket into the frame, it is important to ensure that the magnetic side is always facing upward. For added convenience, the design incorporates wheels and a molded-in handle for easy transport, a hidden locking mechanism to prevent unauthorized access, and flat-folding scissors on both sides to ensure stability during use and compact storage when not in use. No tools are required for assembly.

Cleaning and Disinfecting

Clean your displays, with damp microfiber clothes, rinsed with simply water or warm, soapy or gentle shampooed water. Avoid using vinegar, abrasive, acidic, alcohol-based or heavy cleaners or cleaners containing Ammonia. Only after cleaning the product, if needed, simply apply disinfectant or sanitizer that is in compliance with your local guidelines and regulations.

Design Considerations

Double-sided Weather resistant Street SignPro with Patent Protection (PCT/EP2017/052765). Suitable for Outdoor use with 24" x 36" poster sizes on both sides. No need to fill up water or sand as it is already constructed with heavy materials. Chalkboard Markers and Headers are optional. Should be ordered separately. Dual PET anti-reflective poster covers with magnetic edges are included in the standard package and can also be ordered as spare parts with the code UYPSP40000X1000

Hazardous Substances

M&T Displays prioritizes compliance with the REACH (Registration, Evaluation, Authorisation and Restriction of Chemicals) and RoHS (Restriction of Hazardous Substances) directives to protect both the environment and human health. We ensure that our products do not contain substances listed under REACH and adhere to strict RoHS limits for hazardous materials. Our manufacturing process ensures that lead, mercury, cadmium, and other restricted substances remain within the permitted thresholds, guaranteeing safe and sustainable products for our customers.

Patent

PCT/EP2017/052765



T: +1 855-478-0652 / info@mtdisplaysllc.com / www.mtdisplaysllc.com

ARTICLES

WHITE	BLACK	SIZE	COPY SIZE	WEIGHT	PACKING SIZE
				WITH PACKING	*W X H X D
UPSP410024	UPSP420024	23" X 35"	23" X 35"	37.038 lbs	29.13" X 49.21" X 9.84"

PRINT TEMPLATES

Weather resistant Street Signpro - 24" x 36"
Document Size: 23" x 35" (Includes Bleeds)
Finished Size: 23" x 35"

OPTIONAL ACCESSORIES



Headers
 UYPSP11024,
 UYPSP31024



Chalkboard
 Markers
 UYAKLM1250



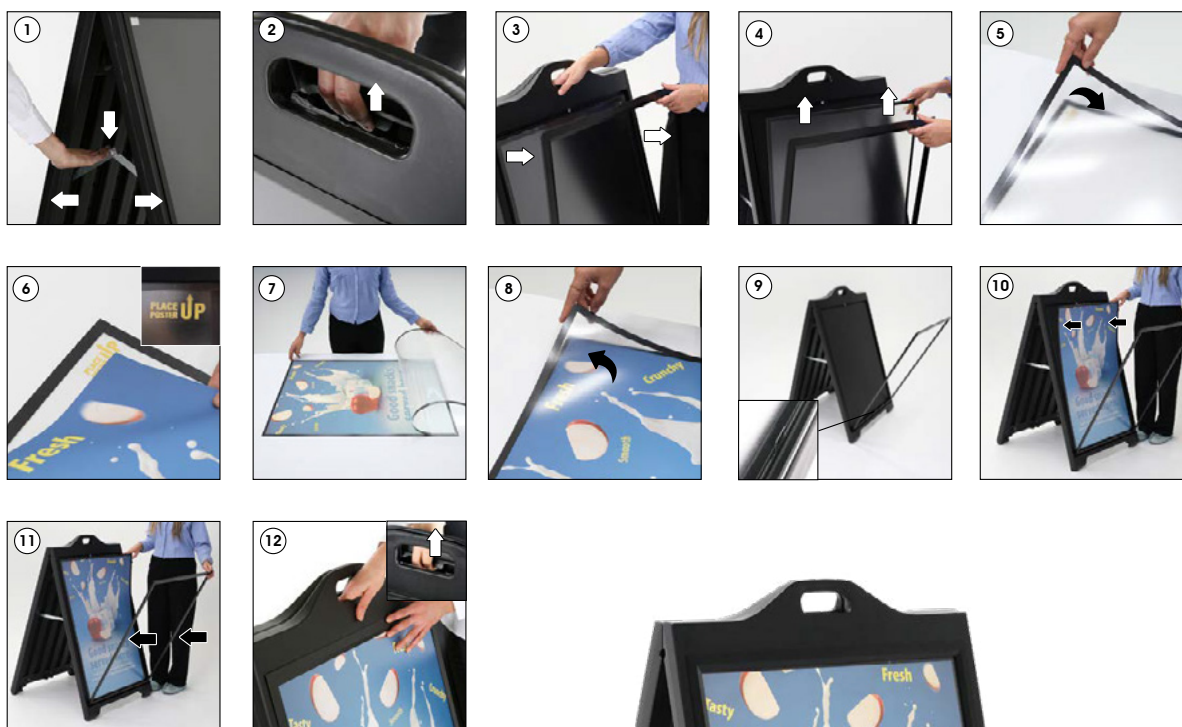
Chalkboard
 Markers
 UYAKLM1251



Dual PET anti-reflective poster covers with magnetic edges
 UYPSP40000

INSTALLATION INSTRUCTIONS

Weather resistant Street Signpro



This technical sheet's contents are all subject to update and modification at MT Displays' exclusive discretion. There is nothing official about this document. For final and legally binding information, please get in touch with the sales staff at MT Displays.



T: +1 855-478-0652 / info@mtdisplaysllc.com / www.mtdisplaysllc.com