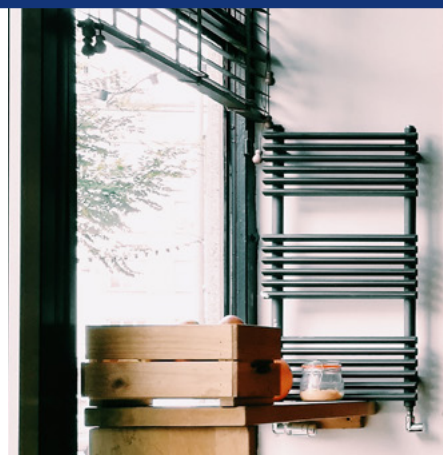


## PORTABLE SNAP FRAME 1.25"



## PORTABLE BIG SIZE "CLICK CLACK" POSTER FRAMES WITH THINNEST POSSIBLE SIDES

Unlike other snap frames this snap frame can be easily disassembled again and again. The poster frame combines the desirable features of affordability with style and ease of use. The snap frame has secured its name and reputation owing to the clip style, hinge support structures that simply flip open and snap back into place for the easy rotation of graphics. The removal and replacement of images can be achieved in a matter of seconds with the clip metal sign frame. Best of all, the poster holder is a wall mountable display unit whereby the front loading design of the structure means you will not have to disassemble and reassemble the frame once it has been mounted. The poster frame can be positioned in either portrait or landscape presentation, with screws and anchors supplied. It is a good solution for short term events that need rapid poster changes like promotional events, conventions, fairs, show and more.

## KEY SELECTION ATTRIBUTES

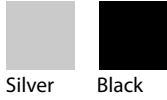
- \*The product is shipped unasssembled
- \* Easy to mount, simple to carry.
- \* "Click Clack" snap open working principle
- \* Ideal for every poster size; 24x36, 27x40, 30x40, 36x48, 40x60
- \* Frame with a slim profile design.
- \* Mitred and round corner alternatives.
- \* High impact molded plastic backing.
- \* Anti-glare poster cover sheet.
- \* Standard with screws and anchors for wall hanging in landscape or portrait positions.
- \* Optional V-Hangers for easy wall mounting.
- \* Can be easily assembled with the photo-oriented
- \* Instruction manual that comes with the product



Black Anodised, mitred

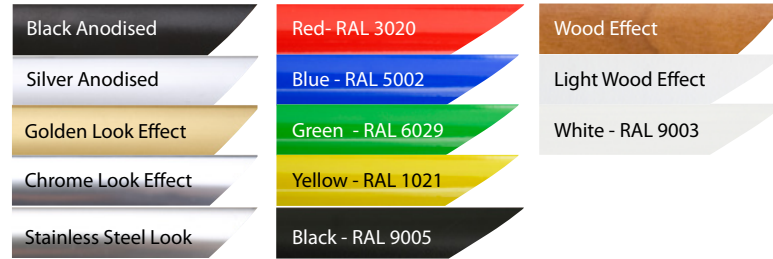


## COLOURS IN STOCK



Silver Black

## COLOUR OPTIONS



## CORNER TYPES



## SNAP FRAME FAMILY



## SUITABLE FOR

Snap Frame can be used for INDOOR applications, for signage needs in many locations like shopping centers, markets, groceries, hotels, offices airports, shops and stores, hospitals, schools, apartments and many more.

## WATCH VIDEO

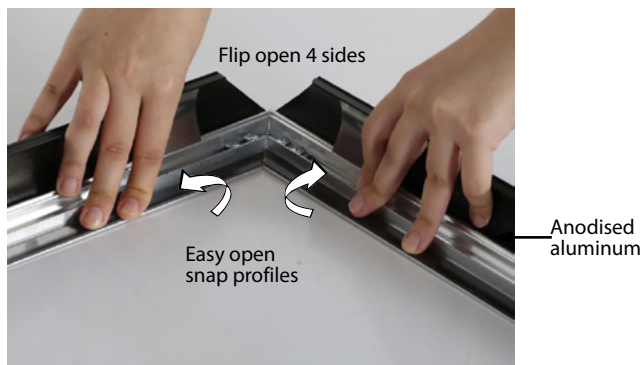


Watch video at our website  
[www.mtdisplays.com](http://www.mtdisplays.com)

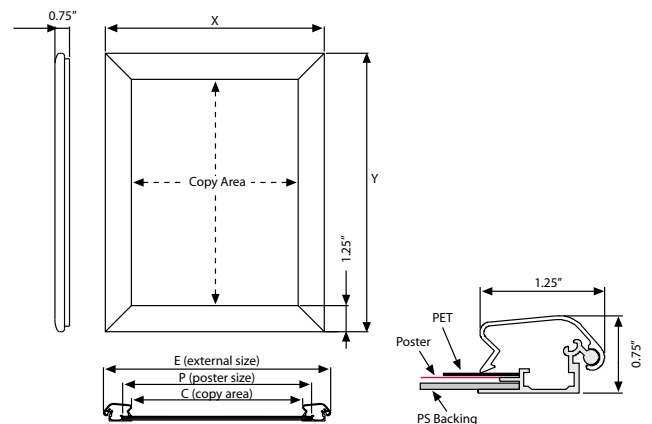
## FEATURES



## EXPLODED VIEW



## TECHNICAL DRAWING



## PACKING VIEW



T: +1 855-478-0652 / [info@mtdisplaysllc.com](mailto:info@mtdisplaysllc.com) / [www.mtdisplaysllc.com](http://www.mtdisplaysllc.com)

ARTICLES

	MITRED BLACK	ROUND SILVER	SAFE SILVER	SAFE BLACK	EXTERNAL (x-y)	POSTER	COPY	WEIGHT	PACKING SIZE
								WITH PACKING	*W X H X D
	UCN325BP24	-	-	-	25.71"X 37.68"	24"X 36"	23.23"X 35.20"	5.621 lbs	26.77"X 38.58"X 1.22"
	UCN325BP74	-	-	-	27.80"X 41.69"	27"X 40"	26.22"X 39.21"	7.275 lbs	29.53"X 42.13"X 1.22"
	UCN325BP36	-	-	-	37.72"X 49.72"	36"X 48"	35.24"X 47.24"	9.920 lbs	36.61"X 48.82"X 1.22"
	UCN325BP34	-	-	-	31.69"X 41.69"	30"X 40"	29.21"X 39.21"	7.936 lbs	32.28"X 42.52"X 1.22"
	UCN325BP46	-	-	-	41.69"X 61.69"	40"X 60"	39.21"X 59.21"	14.881 lbs	41.73"X 61.81"X 1.22"

OPTIONAL ACCESSORIES



V Hanger / UYAA011010

PHYSICAL DATA

**Material**  
1.25" aluminum profiles.  
PET poster cover, High impact, molded PS or ABS backing.

**Poster Material & Thickness**  
0.0039" – 0.0078" for standard product. Max poster thickness 0.19" for mitred corner. Any non-standard poster thicknesses should be indicated with order.

**Surface Finish**  
Silver anodized or black colour, antimicrobial powder coating. Custom colors also available, call for custom color requests.

**Recycled Content**  
Up to 78% recycled content used.

**Warranty**  
All products are guaranteed for 3 years by MT Displays with below conditions:  
[Warranty Conditions](#)

**Installation Considerations**  
Each frame includes wall mounting accessories (4 screws & 4 plugs). Each frame is packed individually in a cardboard box. This product is shipped unasssembled can be easily assembled with the photo oriented instruction manual that comes with the product.

**Storage Conditions**  
Goods should be stored at 32°F to 77°F in a dry place. Store in the original package.

**Design Considerations**  
Suitable for silk screen printing, max. letter height is 0.62".

**Cleaning and Disinfecting**  
Clean your displays, with damp microfiber clothes, rinsed with simply water or warm, soapy or gentle shampooed water. Avoid using vinegar, abrasive, acidic, alcohol-based or heavy cleaners or cleaners containing Ammonia. Only after cleaning the product, if needed, simply apply disinfectant or sanitizer that is in compliance with your local guidelines and regulations.

**Hazardous Substances**  
M&T Displays prioritizes compliance with the REACH (Registration, Evaluation, Authorisation and Restriction of Chemicals ) and RoHS (Restriction of Hazardous Substances) directives to protect both the environment and human health. We ensure that our products do not contain substances listed under REACH and adhere to strict RoHS limits for hazardous materials. Our manufacturing process ensures that lead, mercury, cadmium, and other restricted substances remain within the permitted thresholds, guaranteeing safe and sustainable products for our customers.

PRINT TEMPLATES

**Snap Frame 1.25" - 24"x36"**  
Document Size: 24.4" x 36.4" (Includes Bleeds)  
Finished Size: 24"x36" (609.6x914.4 mm)

**Snap Frame 1.25" - 27"x40"**  
Document Size: 27.4" x 40.4" (Includes Bleeds)  
Finished Size: 27"x40" (685.8x1016 mm)

**Snap Frame 1.25" - 30"x40"**  
Document Size: 30.4" x 40.4" (Includes Bleeds)  
Finished Size: 30"x40" (762x1016 mm)

**Snap Frame 1.25" - 36"x48"**  
Document Size: 36.4" x 48.4" (Includes Bleeds)  
Finished Size: 36"x48" (914.4x1219 mm)

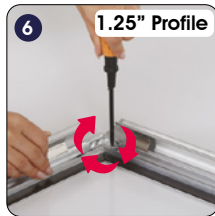
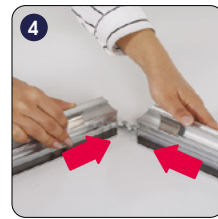
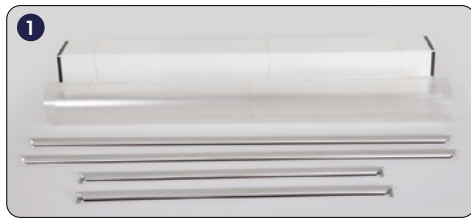
**Snap Frame 1.25" - 40"x60"**  
Document Size: 40.4" x 60.4" (Includes Bleeds)  
Finished Size: 40"x60" (1016x1524 mm)



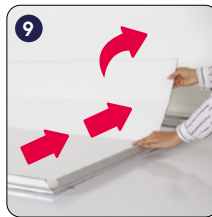


# INSTALLATION INSTRUCTIONS

## Portable Snap Frame 1.25" / 1001846





**Note:**  
There are only one screw on the brackets of 1" profile Portable Snap Frames and 2 screws on the bracket of 1.25" and 1.77" profile Portable Snap Frames.



- For product questions or concerns please contact customer care.  
Please have your order number / carton (e.g. 1/110001394-460) available to help expedite the process.
- All rights reserved. All pictures, figures and writings are secured internationally by copy-right law.

 **email us**  
info@mtdisplaysllc.com

 **return an item**  
info@mtdisplaysllc.com

 **installation issues?**  
www.displaysmarket.com/product-videos/

This technical sheet's contents are all subject to update and modification at MT Displays' exclusive discretion. There is nothing official about this document. For final and legally binding information, please get in touch with the sales staff at MT Displays.



T: +1 855-478-0652 / info@mtdisplaysllc.com / www.mtdisplaysllc.com