

WOOD MAKI



PROVIDE PROFESSIONAL PRESENTATION OF YOUR PRINT ADS

Wood Maki is made of fir wood. Lacquered finish is applied for long term use in outdoor conditions. Double sided sliding in and out design makes the chalkboard easy to change. It offers perfect solution where announcements change frequently such as bars, restaurants, hotels and many more. Also, Wood Maki is an excellent friendly way to advertise your business. Chalk surface is suitable for chalk pen use. Its magnetic surface is suitable for magnetic PET pocket and magnet pin use. Soft feet prevent the product sliding and the surface scratching. 3 size options are available.

KEY SELECTION ATTRIBUTES

* Double-sided Fir Wood Pavement Sign with Sliding-in magnetic chalkboard design.

* One set includes double-sided channeled frame and long feet, made from fir wood with lacquered finish for being durable in outdoor conditions and keeping the system stable; double-sided black magnetic chalkboard for sliding in and out from top of the frame and changing announcements frequently; puller nuts & screws for easy installation.

* Suitable for using chalk pen, magnetic PET pocket and magnet pin with 590x680mm writing area.

* 3 size options are available, call for other options.

* Magnetic PET cover, magnets and chalkboard markers are optional, not included in standard package, please order separately.

* Dark fir wood frame with lacquered finish and magnetic chalkboard in black color in standard.

* Packed unassembled in 2 boxes. Assembly in 40 seconds.



COLOURS IN STOCK



Dark
Wood

SUITABLE FOR

Al Maki Signs can be used for INDOOR and OUTDOOR applications, for signage needs in many locations like shopping centers, markets, groceries, hotels, offices airports, shops and stores, hospitals, schools, apartments and many more.

WATCH VIDEO



Watch video at our website
www.mtdisplaysllc.com

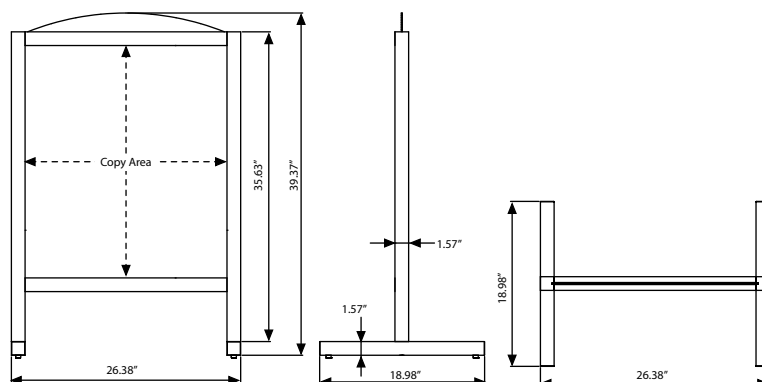
FEATURES



EXPLODED VIEW



TECHNICAL DRAWING



ARTICLES

ARTICLE	CHALKBOARD SIZE	COPY AREA	DESCRIPTION	WEIGHT	PACKING SIZE
				WITH PACKING	*W X H X D
UWMCD06078	23.62"x30.71"	23.23"x26.77"	Dark Wood-Outdoor	16.93 lbs	27.56"x37.8"x2.36"

OPTIONAL ACCESSORIES



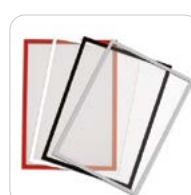
Optional magnetic buttons. Packed in 10.
UYUP397000



Colour chalkboard marker. 10 mm wide.
5 Pcs. / UYAKLM1251



White chalkboard marker for Wood Display. 10 mm wide. 3 Pcs / UYAKLM1250



Magnetic PET Cover
Please don't forget to order

MAGNETIC PET COVER		
ARTICLE	SIZE	COLOUR
UPCMOR00A4	210 X 297 mm	Red
UPCMOB00A4	210 X 297 mm	Black
UPCMOW00A4	210 X 297 mm	White
UPCMOG00A4	210 X 297 mm	Grey
UPCMOG00A5	105 X 148 mm	Grey
UPCMOB00A5	105 X 148 mm	Black



T: +1 855-478-0652 / info@mtdisplaysllc.com / www.mtdisplaysllc.com

PHYSICAL DATA

Material

Fir wood frame and magnetic chalkboard.

Surface Finish

Dark fir wood frame with lacquered finish and magnetic chalkboard in black color in standard. Call for custom finish requests.

Warranty

All products are guaranteed for 2 years by MT Displays with below conditions:

[Warranty Conditions](#)

Storage Conditions

Goods should be stored at 32° to 77°F in a dry place. Store in the original package.

Installation Considerations

Wood Maki Signs are packed unassembled in 2 packs with an easy-to-understand instruction sheet & fixing set. One set includes double-sided channeled frame and long feet, made from fir wood with lacquered finish for being durable in outdoor conditions and keeping the system stable; double-sided black magnetic chalkboard for sliding in and out from top of the frame and changing announcements frequently; puller nuts & screws for easy installation. Magnetic PET cover, magnets and chalkboard markers are optional, not included in standard package, please order separately. Assembly in 40 seconds.

Design Considerations

Double-sided Fir Wood Pavement Sign with Sliding-in magnetic chalkboard design. Suitable for using chalk pen, magnetic PET pocket and magnet pin with 590x680mm writing area. 3 size options are available, call for other options. Long feet on the base provides stability.

Cleaning and Disinfecting

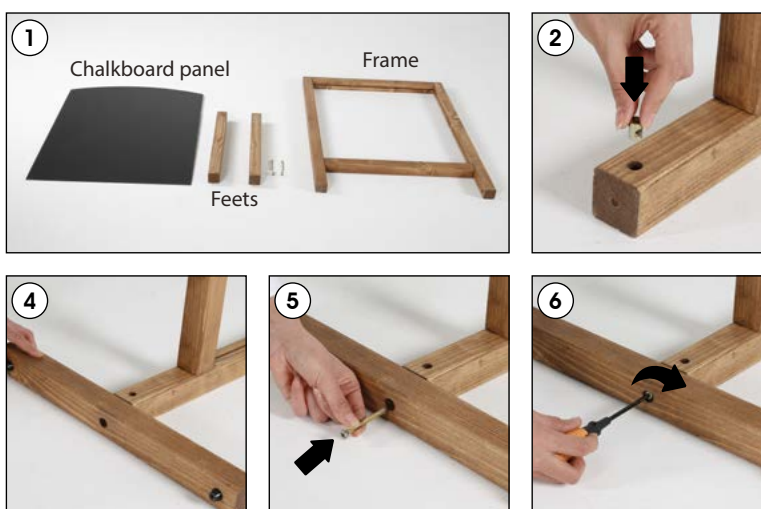
Clean your displays, with damp microfiber clothes, rinsed with simply water or warm, soapy or gentle shampooed water. Avoid using vinegar, abrasive, acidic, alcohol-based or heavy cleaners or cleaners containing Ammonia. Only after cleaning the product, if needed, simply apply disinfectant or sanitizer that is in compliance with your local guidelines and regulations.

INSTALLATION INSTRUCTIONS

Wood Maki / 1011833H000

Each product includes

- 1 x Frame
- 2 x Feet
- 1 x Chalkboard panel
- 2 x Puller Nut M6
- 2 x Puller Screw M6x60



- Please inform the order number on the product or on the carton (e.g. 1/110001394-460) to the place that you have made the purchase if any problem with the product occurs.
- All rights reserved. All pictures, figures and writings are secured internationally by copy-right law. Infringements will be sued by civil and legal law.

This technical sheet's contents are all subject to update and modification at MT Displays' exclusive discretion. There is nothing official about this document. For final and legally binding information, please get in touch with the sales staff at MT Displays.



T: +1 855-478-0652 / info@mtdisplaysllc.com / www.mtdisplaysllc.com