

WINDPRO SLIM 2 TIER



DOUBLE SIDED PAVEMENT SIGNS WITH TOP OPENING SLIDE-IN DESIGN

WindPro Slim is a double-sided stopper as pavement sign. It is suitable for outdoor use. Frame is made of sturdy aluminium. Poster is secured by standing firm between cover and backing. 2xAnti-reflex poster protection and a separator are included. It is suitable for 0.87"x2.36" poster. It is equipped with water fillable heavy base which is made of HDPE. Water capacity is 24lt. Total weight is 60.63 lbs when full with water. It is equipped with wheels for easy carriage. Colour options are silver and black.

KEY SELECTION ATTRIBUTES

- * Double-sided, outdoor Pavement Sign with two foldible and top opening slide-in frames, equipped with swinging springs and water base for flexibility and stability.
- * Easy to use by sliding posters from top opening profiles in between PET covers and PVC foam backing. The poster is firmly secured in between the backing and cover. Sliding the posters into bottom frame is possible after the top frame is folded.
- * Suitable for outdoor use and 4 different advertisement options on one unit with 22"x28" poster size for each advertisement.
- * Standard poster thickness is between 0.0039" to 0.0078". If used without PVC foam backer, maximum poster thickness is 0.16" for low density rigid posters.
- * One set includes 2 double-sided top opening slide-in aluminium frames with 19 mm depth and folding&locking mechanism for two frames, swinging springs for stabilizing the frame in outdoor conditions, 4 anti-reflex PET poster covers and 2 PVC foam backing, 28.35"x20.87"x 5.98" water fillable HDPE heavy base with wheels for easy carrying and related fixing accessories like, sheet plates, nuts, spanners, and allen key.
- * Water base with 24lt capacity, can be filled with water or sand for providing stability. Weight of water base is 60.63 lbs, when filled with water.
- * Heavy-duty coil springs resist strong winds and return the sign to an upright position.
- * Water base is suitable for branding. Printing area: 11.81"x3.15".
- * Natural silver-anodized, or black powder coated in standard and various RAL colors available with antimicrobial powder coating. Call for custom color requests.
- * It is recommend to carry the product with carry tool when the base is full with water. Carry tool is optional, not included in the package, please order separately.
- * Packed with an easy-to-understand instruction sheet. No tool assembly. Assembly in 75 seconds.



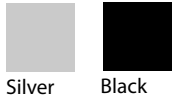
Silver, Silver



Black, Black



COLOURS IN STOCK



Silver Black

SUITABLE FOR

Windpro Slim can be used for OUTDOOR applications, for signage needs in many locations like shopping centers, markets, groceries, hotels, offices airports, shops and stores, hospitals, schools, apartments and many more.

WATCH VIDEO



Watch video at our website
www.mtdisplaysllc.com

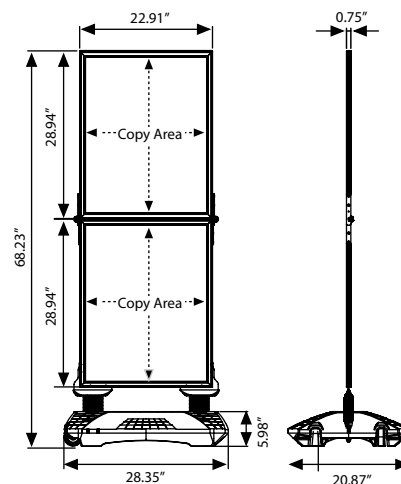
FEATURES



EXPLODED VIEW



TECHNICAL DRAWING



OPTIONAL ACCESSORIES



Optional carry tool.
UYUP480945

ARTICLES

		WEIGHT	PACKING SIZE
SILVER	BLACK	WITH PACKING	*W X H X D
USWPS0N222	USWPS0B222	28.66 lbs	27.95"x43.31"x3.94"x22.44"x30.31"x7.48"
POSTER	COPY		
22.01"x28.03"	21.02"x27.05"		

PHYSICAL DATA

Material

Slide-in aluminium profile frames with 0.75" depth, PET anti-reflex poster cover, PVC foam backing, heavy duty coil springs, HDPE water base.

Poster Material & Thickness

Standard poster thickness is between 0.0039"-0.0078". If used without PVC backer, maximum poster thickness is 0.16" for low density rigid posters. Any non-standard poster thicknesses should be indicated with order.

Surface Finish

Silver anodized or black colour, antimicrobial powder coating. Custom colors also available, call for custom color requests.

Recycled Content

For frame part up to 78% and for base part up to 40% recycled content used.

Warranty

All products are guaranteed for 2 years by MT Displays with below conditions:

[Warranty Condition](#)

Storage Conditions

Goods should be stored at 32° to 77°F in a dry place. Store in the original package.

Installation Considerations

Packed with an easy-to-stand instruction sheet. No tool assembly. Assembly in 75 seconds. One set includes 2 double-sided top opening slide-in aluminium frames with 0.75" depth and folding&locking mechanism for two frames, swinging springs for stabilizing the frame in outdoor conditions, 4 anti-reflex PET poster covers and 2 PVC foam backing, 28.35"x20.87"x5.98" water fillable HDPE heavy base with wheels for easy carrying and related fixing accessories like, sheet plates, nuts, spanners, and allen key. Water base with 24lt capacity, can be filled with water or sand for providing stability. Weight of water base is 60.63 lbs, when filled with water. Heavy-duty coil springs resist strong winds and return the sign to an upright position. It is recommend to carry the product with carry tool when the base is full with water. Carry tool is optional, not included in the package, please order separately.

Design Considerations

Double-sided, outdoor Pavement Sign with two foldible and top opening slide-in frames, equipped with swinging springs and water base for flexibility and stability. Easy to use by sliding posters from top opening profiles in between PET covers and PVC foam backing. The poster is firmly secured in between the backing and cover. Sliding the posters into bottom frame is possible after the top frame is folded. Suitable for outdoor use and 4 different advertisement options on one unit with 22"x28" poster size for each advertisement. Water base is suitable for branding. Printing area: 11.81"x31.5"

Cleaning and Disinfecting

Clean your displays, with damp microfiber clothes, rinsed with simply water or warm, soapy or gentle shampooed water. Avoid using vinegar, abrasive, acidic, alcohol-based or heavy cleaners or cleaners containing Ammonia. Only after cleaning the product, if needed, simply apply disinfectant or sanitizer that is in compliance with your local guidelines and regulations.



T: +90 850 433 67 85 / info@mtdisplays.com / www.mtdisplays.com

PRINT TEMPLATES

Windpro Slim - 22"x28"

Document Size: 22.4"x28.03" (Includes Bleeds)

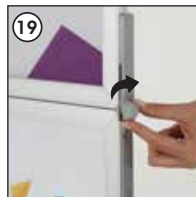
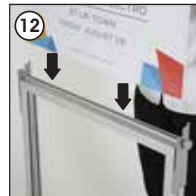
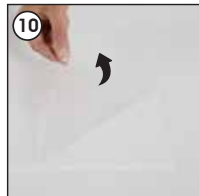
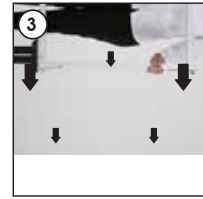
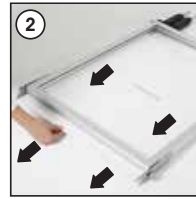
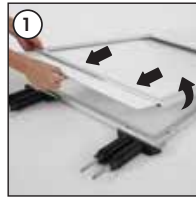
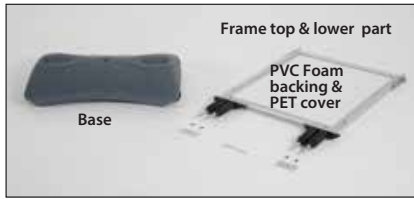
Finished Size: 22.4"x28.03" [Print](#)

INSTALLATION INSTRUCTIONS

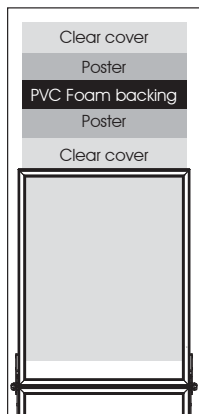
WindPro Slim / 1012377H000

Each product includes

- 1 x Frame top & lower part
- 1 x Base
- 2 x PVC Foam backing
- 4 x Pet cover
- 1 x 17 Spanner
- 4 x Nut
- 2 x Sheet plate



Insert the posters



- Please inform the order number on the product or on the carton (e.g. 1/110001394-460) to the place that you have made the purchase if any problem with the product occurs.
- All rights reserved. All pictures, figures and writings are secured internationally by copy-right law. Infringements will be sued by civil and legal law.

This technical sheet's contents are all subject to update and modification at MT Displays' exclusive discretion. There is nothing official about this document. For final and legally binding information, please get in touch with the sales staff at MT Displays.



T: +90 850 433 67 85 / info@mtdisplays.com / www.mtdisplays.com