



## BEST SELLER PAVEMENT SIGN IN THE WORLD!

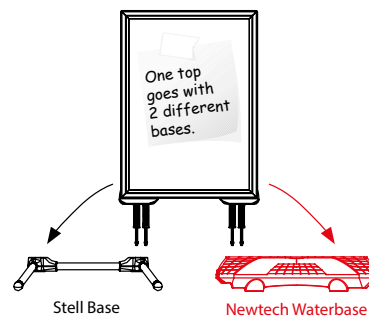
A new stunning look for Pavement Signs! It consists of 2 main articles, one of which serves the frame while the other supports the base of the product. It is practical to change the poster. It can be easily loaded, has no sharp edges and has steel springs for flexibility.

## KEY SELECTION ATTRIBUTES

- \* Double-sided Pavement Sign with swinging steel spring design for flexibility and stability.
- \* Patent protected (OHIM DM/084 128) WindPro® is heavy and robust pavement sign for OUTDOOR use with 2 main parts: frame and the waterbase.
- \* Suitable for outdoor conditions between 5°F to 122°F.
- \* Weatherproof & Wind Resistant: Suitable for windy and rainy outdoor conditions, the water wick around the frame protects the poster within. Waterproof IP55.
- \* Suitable for 20"X30", 22"X28", 24"X36", 30"X40" poster sizes.
- \* One set includes a double sided snap open 1.57" aluminium profile WindPro frame with 1.25" depth and water wick around, round mitred corners for safety, 2 anti-reflex PET poster covers, 1 strong PP backing, 4 x M10 nuts, 1 x 17 spanner, and HDPE Newtech heavy water base with wheels and washers for installation.
- \* The spring connectors stabilize the position of your poster. Heavy-duty coil resist strong winds and return the sign to an upright position.
- \* Heavy waterbase provide stability. Ground wheels in upside position enable easy movement of the product.
- \* Round corners guarantee maximum safety on the pavement.
- \* Please place the poster inside the water wick around the inner frame. The gasket in frame provides high vacuuming to UV resistant poster protection to keep the poster dry.
- \* Optional header accessories are available upon request, not included in standard set. If the frame of WindPro is required with a "HEADER" option, then the standard frames cannot be used, header enabled frames must be ordered. Please contact our sales department for the frames suitable for use with header.
- \* It is recommend to carry the product with the tool as shown (optional available) , when the base is full with water.
- \* Natural silver-anodized, black in standard and various RAL colors available with antimicrobial powder coating. Base standard in dark grey color or black, other colors are available upon request.
- \* Packed unassembled with an easy mounting instruction sheet & fixing set. Assembly in 60 seconds.
- \* Please use the wrench enclosed and tighten carefully. If tightened too much, the base can breach.
- \* One top goes with two different bases. Snap open frame can be used in combination with two different bases.



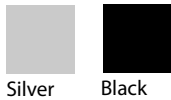
Black



Silver

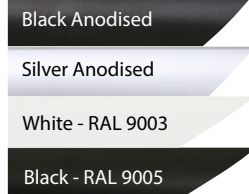


## COLOURS IN STOCK



Silver Black

## COLOUR OPTIONS



## SUITABLE FOR

WindPro® can be used for INDOOR and OUTDOOR applications, for signage needs in many locations like shopping centers, markets, groceries, hotels, offices airports, shops and stores, hospitals, schools, apartments and many more.

## WATCH VIDEO



Watch video at our website  
www.mtdisplays.com

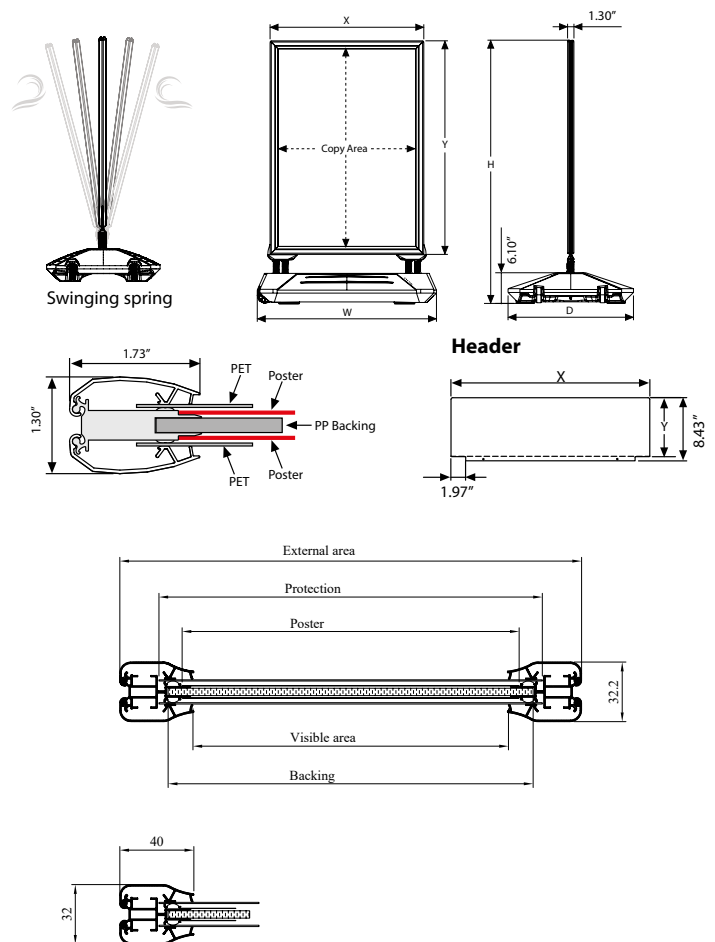
## FEATURES



## EXPLODED VIEW



## TECHNICAL DRAWING



## ARTICLES

FRAME					WEIGHT	PACKING SIZE
SILVER	BLACK	EXTERNAL (x-y)	POSTER	COPY	WITH PACKING	*W X H X D
USWP000NA1	USWP000BA1	26.22" x 35.94"	23.38" x 33.11"	23.07" x 32.79"	17.19 lbs	28.14" x 46.45" x 1.85"
USWP000NA0	USWP000BA0	35.94" x 49.64"	33.11" x 46.81"	32.79" x 46.49"	25.13 lbs	38.18" x 62.99" x 1.85"
USWP000NB2	USWP000BB2	22.51" x 30.39"	19.68" x 27.55"	19.37" x 27.24"	15.87 lbs	32.28" x 52.75" x 1.85"
USWP000NB1	USWP000BB1	30.39" x 42.20"	27.55" x 39.37"	27.24" x 39.05"	23.14 lbs	24.01" x 40.94" x 1.85"
USWP000N23	USWP000B23	22.83" x 32.83"	20" x 30"	19.68" x 29.68"	16.53 lbs	24.40" x 44.48" x 1.85"
USWP000N34	USWP000B34	32.83" x 42.83"	30" x 40"	29.68" x 39.68"	25.04 lbs	34.64" x 54.33" x 1.85"

## OPTIONAL ACCESSORIES



SwingPro® Plus & WindPro®  
Plus header (3 PVC Foam)

HEADER: 3 mm PVC Foam				WEIGHT
ARTICLE	SIZE	PRINTING AREA (x-y)	WITH PACKING	
UYFT005023	20" X 30"	23.03" X 7.87"	0.507 lbs	
UYFT005024	30" X 40"	33.03" X 7.87"	0.738 lbs	
UYFT005034	22" X 28"	25" X 7.87"	0.551 lbs	
UYFT005046	24" X 36"	27.05" X 7.87"	0.595 lbs	

NEWTECH WATERBASE: HLDPE							WEIGHT	PACKING SIZE
SILVER	BLACK	SIZE	FOR	H	W	D	WITH PACKING	*W X H X D
UTWM003000	UTWM003010	28.35" X 20.87"	20" X 30"	42.87"	28.35"	20.87"	9.877 lbs	21.85" x 29.53" x 7.01"
			22" X 28"	40.87"	28.35"	20.87"		
			24" X 36"	48.90"	28.35"	20.87"		
UTWM004000	UTWM004010	35.43" X 24.80"	28" x 44"	55.31"	35.43"	24.80"	15.102 lbs	23.82" x 36.61" x 7.01"
			30" X 40"	52.87"	35.43"	24.80"		



Tel: +86 39083352 85 for mt displays / www.mtdisplays.com

## PHYSICAL DATA

### Material

1.57" aluminium profile snap open WindPro® frame, PET anti-reflex poster cover, PP backing, HDPE newtech base. Optional PVC Foam headers

### Poster Material & Thickness

0.0039" – 0.0078" with gasket/water wick for standard product. Max poster thickness is 0.078" for low density rigid posters such as PVC foam, PP, etc. Any non-standard poster thickness should be indicated with order.

### Surface Finish

Natural silver-anodized, black in standard and various RAL colors available with antimicrobial powder coating. Base standard in dark grey color or black, other colors are available upon request. Call for custom color requests.

### Recycled Content

For frame part up to 78% and for base part up to 40% recycled content used.

### Warranty

All products are guaranteed for 2 Years by MT Displays with below conditions:  
[Warranty Conditions](#)

### Storage Conditions

Goods should be stored at 32°F to 77°F in a dry place. Store in the original package.

### Installation Considerations

WindPro is packed unassembled with an easy mounting instruction sheet & fixing set. Assembly in 60 seconds. One set includes a double sided snap open 1.57" aluminium profile WindPro frame with 1.25" depth and water wick around, round mitred corners for safety, 2 anti-reflex PET poster covers, 1 strong PP backing, 4 x M10 nuts, 1 x 17 spanner, and HDPE Newtech heavy water base with wheels and washers for installation. Please place the poster inside the water wick around the inner frame. The gasket in frame provides high vacuuming to UV resistant poster protection to keep the poster dry. Please use the wrench enclosed and tighten carefully. If tightened too much, the base can breach. Optional header accessories are available upon request, not included in standard set. If the frame of WindPro Plus is required with a "HEADER" option, then the standard frames cannot be used, header enabled frames must be ordered. Please contact our sales department for the frames suitable for use with header.

### Design Considerations

Double-sided Pavement Sign with swinging steel spring design for flexibility and stability. Patent protected (OHIM DM/084 128) WindPro® is heavy and robust pavement sign for OUTDOOR use with 2 main parts: frame and the waterbase. Suitable for outdoor conditions between 5°F to 122°F. Weatherproof & Wind Resistant:

Suitable for windy and rainy outdoor conditions, the water wick around the frame protects the poster within. Waterproof IP55. Suitable for 20"x30", 20"x30", 22"x28", 24"x36", 30"x40" poster sizes. Round corners guarantee maximum safety on the pavement. The spring connectors stabilize the position of your poster. Heavy-duty coil resist strong winds and return the sign to an upright position. Heavy waterbase provide stability. Ground wheels in upside position enable easy movement of the product. It is recommend to carry the product with the tool as shown (optional available), when the base is full with water.

### Cleaning and Disinfecting

Clean your displays, with damp microfiber clothes, rinsed with simply water or warm, soapy or gentle shampooed water. Avoid using vinegar, abrasive, acidic, alcohol-based or heavy cleaners or cleaners containing Ammonia. Only after cleaning the product, if needed, simply apply disinfectant or sanitizer that is in compliance with your local guidelines and regulations.

### Patent

OHIM DM/084 128

## PRINT TEMPLATES

### Windpro - 20" x 30"

Document Size: 20.4" x 30.4" (Includes Bleeds)

Finished Size: 20" x 30" [Print](#)

### Windpro - 30" x 40"

Document Size: 30.4" x 40.4" (Includes Bleeds)

Finished Size: 30" x 40" [Print](#)

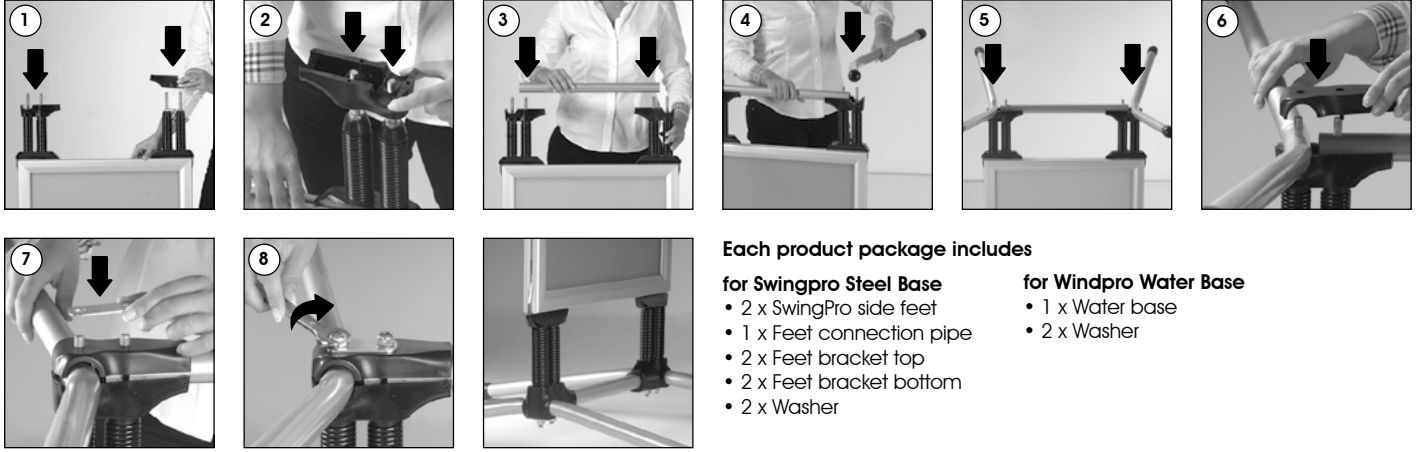




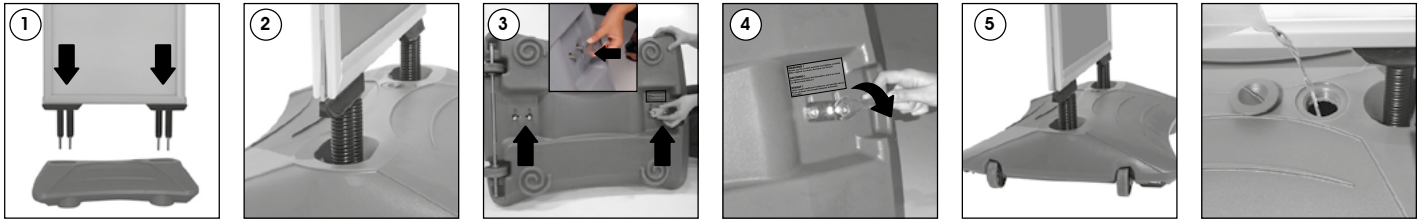
# INSTALLATION INSTRUCTIONS

WindPro® / 1002045

## SwingPro Steel base

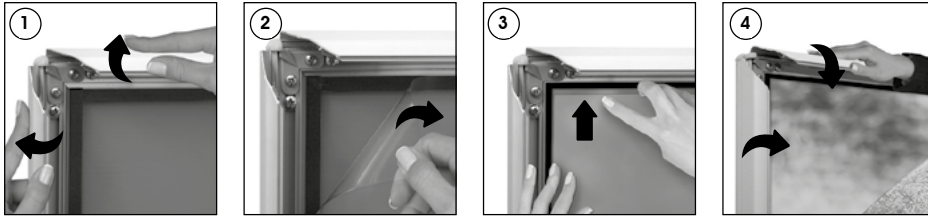


## WindPro Waterbase



You can fill in the base by water & close the cover cap.

## Poster Change



### Each product package includes

#### for Frame

- 1 x SwingPro & WindPro Frame
- 2 x PET cover
- 4 x Nut M10
- 1 x 17 spanner



### WARNING !

- Please use the wrench enclosed and tighten carefully. When tighten too much, the base can breach.
- It is recommend to carry the product with the tool as shown (optional available) , when the base is full with water.



- Please inform the order number on the product or on the carton (e.g. 1/110001394-460) to the place that you have made the purchase if any problem with the product occurs.
- Bitte teilen Sie bei jeglichen Problemen, die auf dem Artikel oder auf der Verpackung aufgeführte Auftragsnummer (z.B: 1/110001394-460) Ihrem Händler mit.
- Lütfen ürünlerdeki herhangi bir sorun için ürünün veya paketin üzerindeki sipariş numarasını (örnek: 1/110001394-460) satın aldığınız yere bildiriniz.
- All rights reserved. All pictures, figures and writings are secured internationally by copy-right law. Infringements will be sued by civil and legal law.
- Alle Rechte vorbehalten. Alle Bilder, Zeichnungen und Texte sind international urheberrechtlich geschützt. Etwaige Zuwiderhandlungen werden zivil- und strafrechtlich verfolgt.
- Tüm hakları saklıdır. Tüm resimlerin, şemaların ve yazıların kopya hakları uluslararası kanunlarla güvence altına alınmıştır. İhlali durumunda sivil ve hukuki yasa mercii tarafından dava edilecektir.

This technical sheet's contents are all subject to update and modification at MT Displays' exclusive discretion. There is nothing official about this document. For final and legally binding information, please get in touch with the sales staff at MT Displays.



T: +1 855-478-0652 / info@mtdisplaysllc.com / www.mtdisplaysllc.com