

WINDOW FRAME



HARD-TO-OPEN FRAMES FOR WINDOW PRESENTATION OF YOUR POSTERS

The Window Frame system is available in 1" or 1.25", hard-to-open, secure profiles. The Window Frames are designed for window mounted presentation of medium and small size posters from both inside and outside, for this purpose there is a surrounding strong double-sided tape at the back of each frame. The system includes decorative back profile to hide the double-sided adhesive tape which holds the frame to the window. Window Frames are easy to use only by opening the front profile. You just need to flip up all four sides and place the first plastic protective cover, then the first poster facing outside, the second poster is placed facing inside and lastly place the second plastic protective cover.

KEY SELECTION ATTRIBUTES

- * Available for indoor & outdoor usage
- * Suitable for open-air use or highly frequented public areas.
- * Ideal for medium-sized posters.
- * Hard-to-open, secure profile.
- * Natural silver-anodized and various RAL colors. available with antimicrobial powder coating.
- * Standard mitred corners.
- * Easy poster changing by "peel&stick" fixing.
- * Double sided adhesive tape holds up the frame.
- * Easy to change the poster by opening front profile.
- * Suitable for both portrait and landscape positions.
- * Anti-glare poster cover sheets.



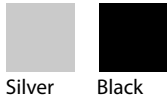
1"



1.25"

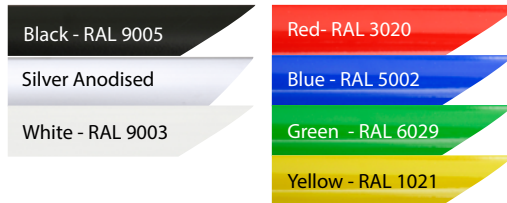


COLOURS IN STOCK

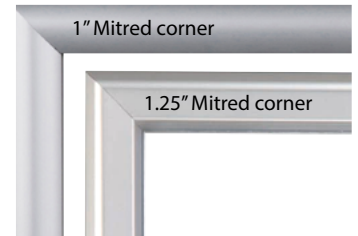


Silver Black

COLOUR OPTIONS



CORNER TYPES



SUITABLE FOR

Window Frames can be used for INDOOR and OUTDOOR applications, for signage needs in many locations like shopping centers, markets, groceries, hotels, offices airports, shops and stores, hospitals, schools, banks, car dealers, insurance companies, telecom companies, travel agencies, museums, restaurants, theatres for commercial advertising, or to change menus and specials deals at restaurants and many more.

WATCH VIDEO



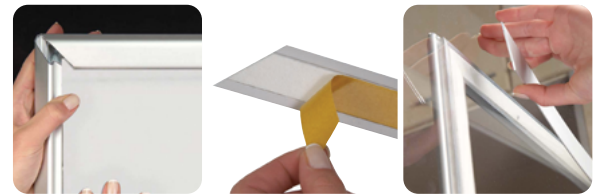
Watch video at our website
www.mttdisplays.com

FEATURES

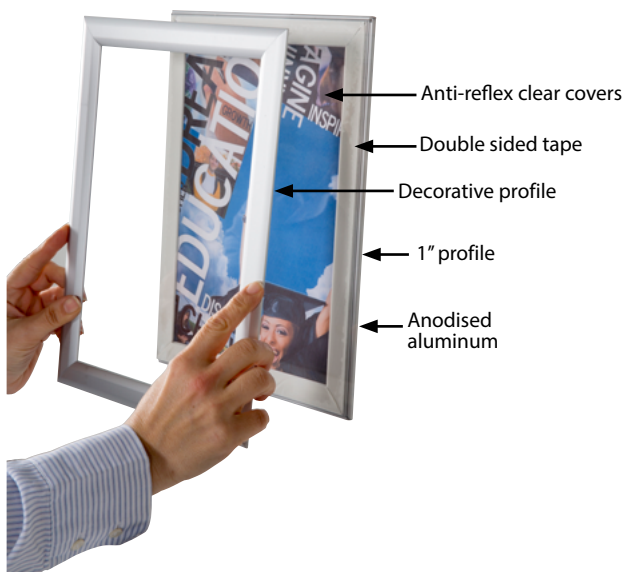
1"



1.25"

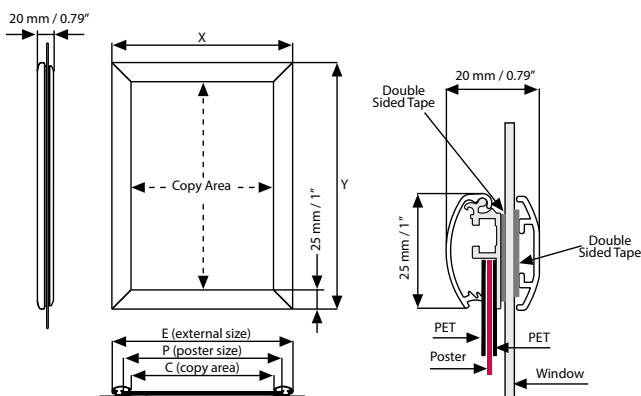


EXPLODED VIEW

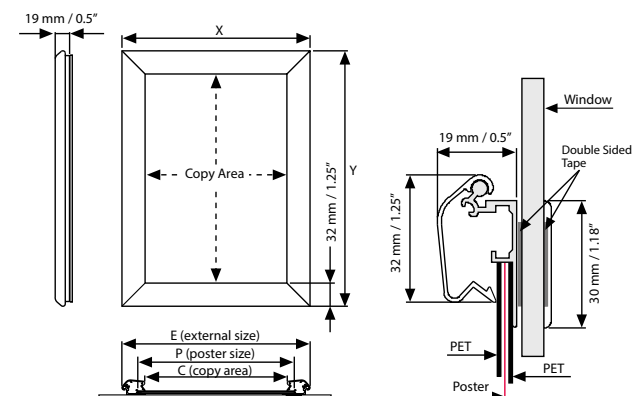


TECHNICAL DRAWING

25 mm



32 mm



T: +1 855-478-0652 / info@mttdisplaysllc.com / www.mttdisplaysllc.com

ARTICLES

PROFILE : 25 mm 45°				WEIGHT	PACKING SIZE
ARTICLE	EXTERNAL (x-y)	POSTER	COPY	WITH PACKING	*W X H X D
UCW255N481	9.69" X 12.17"	8.5" X 11"	7.80" X 10.28"	1.102 lbs	10.63" X 12.99" X 0.83"
UCW255N417	12.17" X 18.19"	11" X 17"	10.28" X 16.30"	1.873 lbs	12.99" X 18.90" X 0.83"
UCW255N422	23.19" X 29.17"	22" X 28"	21.30" X 27.28"	3.637 lbs	24.02" X 30.31" X 0.83"
UCW255N423	21.18" X 31.18"	20" X 30"	19.29" X 29.29"	3.637 lbs	22.44" X 32.28" X 1.22"
UCW255N434	31.18" X 41.18"	30" X 40"	29.29" X 39.29"	6.944 lbs	31.89" X 42.13" X 0.91"
UCW255N446	41.18" X 61.18"	40" X 60"	39.29" X 59.29"	13.227 lbs	41.73" X 61.81" X 0.91"

PROFILE : 32 mm 45°				WEIGHT	PACKING SIZE
ARTICLE	EXTERNAL (x-y)	POSTER	COPY	WITH PACKING	*W X H X D
UCW325N423	21.69" X 31.69"	20" X 30"	19.21" X 29.21"	4.519 lbs	22.44" X 32.28" X 1.22"
UCW325N434	31.69" X 41.69"	30" X 40"	29.21" X 39.21"	7.936 lbs	32.28" X 42.52" X 1.22"
UCW325N446	41.69" X 61.69"	40" X 60"	39.21" X 59.21"	14.881 lbs	41.73" X 61.81" X 1.22"

PHYSICAL DATA

Material

1" and 1.25" aluminum profiles.
2 PET poster covers.

Poster Material & Thickness

0.0039" – 0.0078" for standard product. Max poster thickness 0.11 for 1" profile, 0.19" for 1.25" profile. Any non-standard poster thicknesses should be indicated with order.

Surface Finish

Silver anodized, or black colour, antimicrobial powder coating. Custom colors also available, call for custom color requests.

Recycled Content

Up to 78% recycled content used.

Warranty

All products are guaranteed for 3 years by MT Displays with below conditions:

[Warranty Conditions](#)

Installation Considerations

Double PET cover, double-sided tape a round the frame internal & external. Each frame is packed individually in a cardboard box. Please clean the surface before applying the double-sided tape for better application.

Storage Conditions

Goods should be stored at 32°F to 77°F in a dry place. Store in the original package.

Design Considerations

Suitable for silk screen printing, max. letter height is 0.59".

Cleaning and Disinfecting

Clean your displays, with damp microfiber clothes, rinsed with simply water or warm, soapy or gentle shampooed water. Avoid using vinegar, abrasive, acidic, alcohol-based or heavy cleaners or cleaners containing Ammonia. Only after cleaning the product, if needed, simply apply disinfectant or sanitizer that is in compliance with your local guidelines and regulations.

Certifications / Patents

PRINT TEMPLATES

Window Frame 1" - 8.5"x11"

Document Size: 8.9" x 11.4" (Includes Bleeds)
Finished Size: 8.5"x11" (215.9x279.4 mm)

Window Frame 1" - 11"x17"

Document Size: 11.4" x 17.4" (Includes Bleeds)
Finished Size: 11"x17" (279.4x431.8 mm)

Window Frame 1" - 20"x30"

Document Size: 20.4" x 30.4" (Includes Bleeds)
Finished Size: 20"x30" (508x762 mm) [Print](#)

Window Frame 1.25" - 20"x30"

Document Size: 20.4" x 30.4" (Includes Bleeds)
Finished Size: 20"x30" (508x762 mm) [Print](#)

Window Frame 1.25" - 30"x40"

Document Size: 30.4" x 40.4" (Includes Bleeds)
Finished Size: 30"x40" (762x1016 mm) [Print](#)

Window Frame 1.25" - 40"x60"

Document Size: 40.4" x 60.4" (Includes Bleeds)
Finished Size: 40"x60" (1016x1524 mm)

Window Frame 1" - 22"x28"

Document Size: 22.4" x 28.4" (Includes Bleeds)
Finished Size: 22"x28" (558.8x711.1 mm)

Window Frame 1" - 30"x40"

Document Size: 30.4" x 40.4" (Includes Bleeds)
Finished Size: 30"x40" (762x1016 mm) [Print](#)

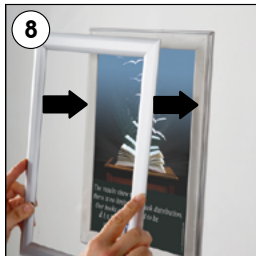
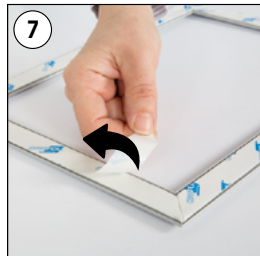
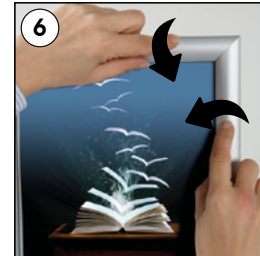
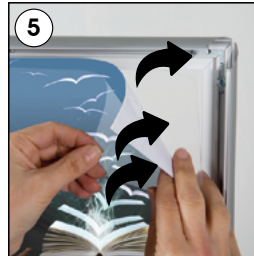
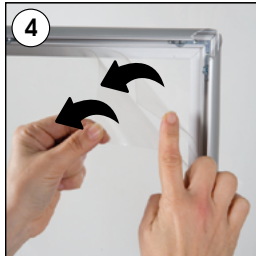
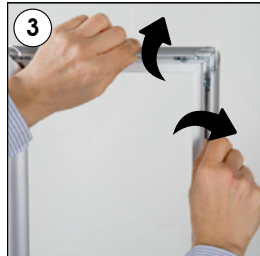
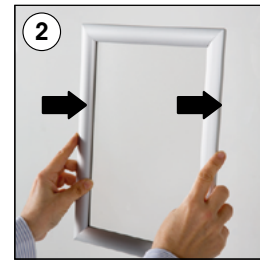
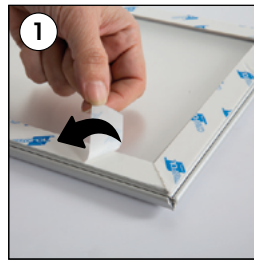
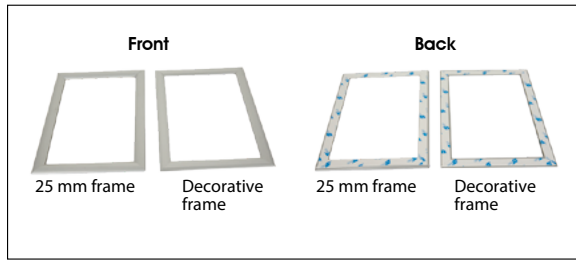
Window Frame 1" - 40"x60"

Document Size: 40.4" x 60.4" (Includes Bleeds)
Finished Size: 40"x60" (1016x1524 mm) [Print](#)



INSTALLATION INSTRUCTIONS

Window Frame 1" / 1010295H000



Each Frame includes double PET cover and double-sided tape around the frame internal & external.



CAUTION

For the best application of adhesive tape to window, the applied surface must be dry, clean & flat.

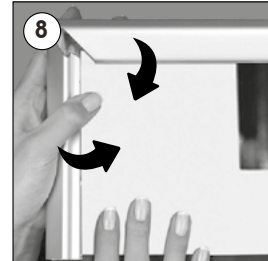
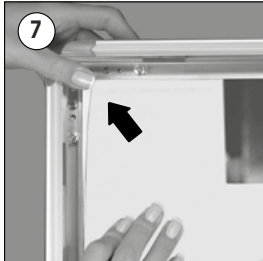
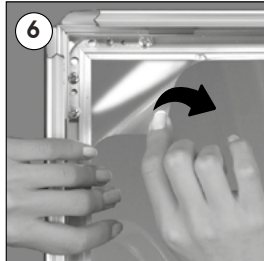
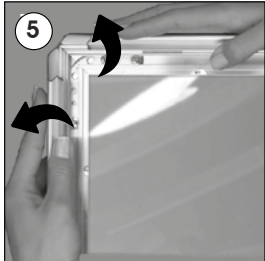
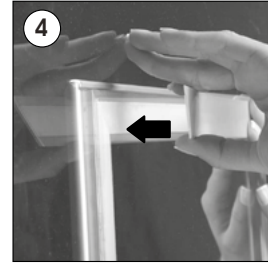
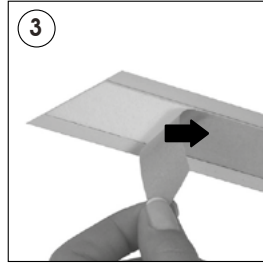
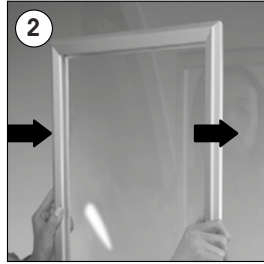
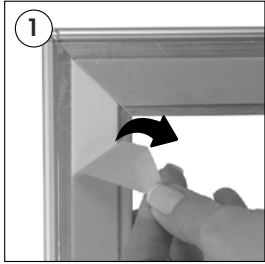
- Please inform the order number on the product or on the carton (e.g. 1/110001394-460) to the place that you have made the purchase if any problem with the product occurs.
- All rights reserved. All pictures, figures and writings are secured internationally by copy-right law. Infringements will be sued by civil and legal law.



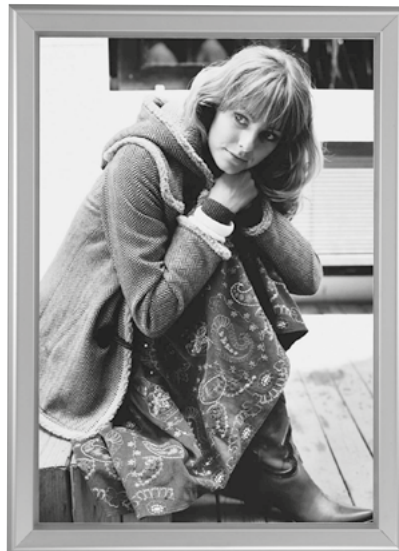
T: +1 855-478-0652 / info@mtdisplaysllc.com / www.mtdisplaysllc.com

INSTALLATION INSTRUCTIONS

Window Frame 1.25" / 1001859



Each Frame includes double PET cover and double-sided tape around the frame internal & external.



CAUTION

For the best application of adhesive tape to window, the applied surface must be dry, clean & flat.

- Please inform the order number on the product or on the carton (e.g. 1/110001394-460) to the place that you have made the purchase if any problem with the product occurs.
- All rights reserved. All pictures, figures and writings are secured internationally by copy-right law. Infringements will be sued by civil and legal law.

This technical sheet's contents are all subject to update and modification at MT Displays' exclusive discretion. There is nothing official about this document. For final and legally binding information, please get in touch with the sales staff at MT Displays.



T: +1 855-478-0652 / info@mtdisplaysllc.com / www.mtdisplaysllc.com