

MONO TOTEM



DOUBLE-SIDED FREE-STANDING LIGHT COLUMNS WITH EASY SNAP OPEN DESIGN

Stylish and practical free-standing light column. Illuminates posters printed on backlit film or duratrans. The snap frames enable you to change the display material easily whenever desired. Product is double sided. One can simply open the front profile to change the poster. The hinged door, magnetic cover closing & plastic pegs on both sides add value to the unit provide easy poster replacement.

KEY SELECTION ATTRIBUTES

- * Double-sided, curved design, free-standing, back-lit light column equipped with long lasting LED technology bulbs.
- * Front loading frames with snap open pressure profiles on long sides, PVC hinges on one side, magnetic covers & plastic pegs on both sides for easy poster replacement.
- * Highly powerful and even illumination is achieved with long lasting LED technology bulbs, opal acrylic poster backings and anti-reflex PET poster covers for illuminating the posters without shining. Posters are interlaced among the acrylic backings and PET poster covers on both sides.
- * Illumination save up to 60% energy cost with an increased life expectancy.
- * Suitable for INDOOR applications with 27" X 67", 27" X 77" poster sizes.
- * One set includes a double sided totem body and 36mm snap open aluminum frame profiles with magnetic tapes and 64mm depth on long sides; back-lit designed LED bulbs; 2 opal acrylic backings to diffuse light across graphics;
- 2 matt/clear anti-reflex magnetic PET poster covers; pegs to hold posters;
- 1 powder coated top plate and 1 powder coated heavy steel baseplate for stability; ventilation holes on top and bottom plates; 1 Allen Key (4), 1 Allen Key (5), 6 SB Bolts, 6 HB Bolts, 1 power adapter with 1,5 meter long cable and 1 EU Plug. UK and US plugs are available, should be specified with order. Has no switch.
- * Supplied with quality certificates and CE/UL PAT test reports passed.
- * RAL9006 grey powder coated main body in standard and various RAL colors available with antimicrobial powder coating.
- * Backlit film or translucent poster material should be used for printing the signage.
- * Packed unasssembled in 2 boxes with an easy mounting instruction sheet. See info chart for pack sizes.



COLOURS IN STOCK



Silver

COLOUR OPTIONS

Black Anodised

Silver Anodised

Black - RAL 9005

White - RAL 9003

Red- RAL 3020

Blue - RAL 5002

Green - RAL 6029

Yellow - RAL 1021

SUITABLE FOR

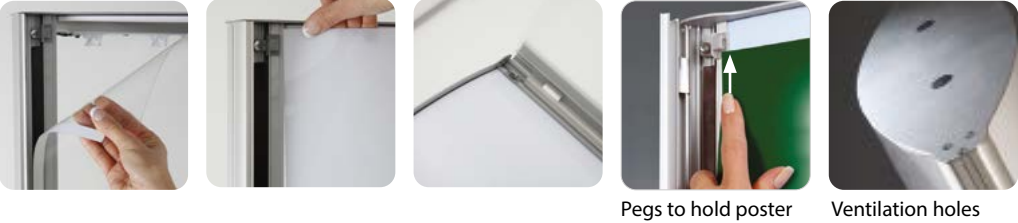
Totem Light Columns can be used for a wide range of INDOOR applications, for signage needs in many locations like retail point-of-purchase, tradeshow displays, movie theatres, sports facilities, shopping malls, markets, groceries, hotels, airports, shops and stores, hospitals, restaurants, halls, meeting, rooms, gas stations, casinos, and more.

WATCH VIDEO



Watch video at our website
www.mtdisplaysllc.com

FEATURES

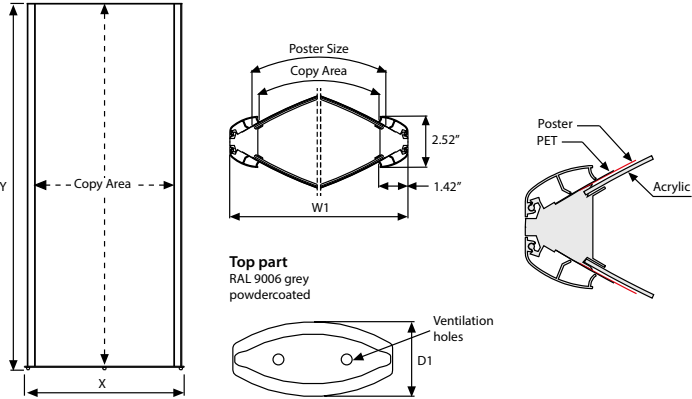


Pegs to hold poster Ventilation holes

EXPLODED VIEW



TECHNICAL DRAWING



ARTICLES

ARTICLE	EXTERNAL (x-y)	POSTER	COPY	D1	W1	LIGHTING	WEIGHT	PACKING SIZE
							WITH PACKING	*W X H X D
UTTM002767	28.97" X 68.97"	27" X 67"	26.21" X 66.21"	13.58"	29.13"	2700-3300 LUX	65.106 lbs	30.91" X 46.06" X 3.74" / 14.57" X 30.12" X 1.57"
UTTM002777	28.97" X 78.97"	27" X 77"	26.21" X 76.21"	13.58"	29.13"	2700-3300 LUX	71.500 lbs	30.91" X 80.71" X 3.35" / 14.57" X 30.12" X 1.57"



PHYSICAL DATA

Material

Totem body with 1.42" aluminium profile snap open frames with magnetic tapes and 2.52" depth, opal acrylic backings, magnetic PET anti-reflex poster covers, LED bulbs, steel top and baseplates.

Poster Material

Backlit film or translucent poster material should be used for printing the signage.

Surface Finish

RAL9006 grey powder coated in standard and various RAL colors available with antimicrobial powder coating. Call for custom color requests.

Recycled Content

Up to %?? recycled content used.

Warranty

All products are guaranteed for 2 years by MT Displays with below conditions:

[Warranty Conditions](#)

Storage Conditions

Goods should be stored at 32° to 77°F in a dry place. Store in the original package.

Installation Considerations

Totem Light Columns are packed unasssembled in 2 boxes with an easy mounting instruction sheet. See info chart for pack sizes. Supplied with quality certificates and CE/UL PAT test reports passed. One set includes a double sided totem body and 36mm snap open aluminum frame profiles with magnetic tapes and 2.52" depth on long sides; LED bulbs for back-lit design; 2 opal acrylic backings to diffuse light across graphics; 2 matt/clear anti-reflex magnetic PET poster covers; pegs to hold posters; 1 powder coated top plate and 1 powder coated heavy steel baseplate for stability; ventilation holes on top and bottom plates; 1 Allen Key (4), 1 Allen Key (5), 6 SB Bolts, 6 HB Bolts, 1 power adapter with 1,5 meter long cable and 1 EU Plug. UK and US plugs are available, should be specified with order. Has no switch.

Design Considerations

Double-sided, curved design, free-standing, back-lit light column equipped with long lasting LED technology bulbs. Front loading frames with snap open pressure profiles on long sides, PVC hinges on one side, magnetic covers & plastic pegs on both sides for easy poster replacement. Highly powerful and even illumination is achieved with long lasting LED technology bulbs, opal acrylic poster backings and anti-reflex PET poster covers for illuminating the posters without shining. Posters are interlaced among the acrylic backings and PET poster covers on both sides. Suitable for INDOOR applications with 28.97" X 68.97" x 28.97" X 78.97" poster sizes. Illumination save up to 60% energy cost with an increased life expectancy.

Cleaning and Disinfecting

Clean your displays, with damp microfiber clothes, rinsed with simply water or warm, soapy or gentle shampooed water. Avoid using vinegar, abrasive, acidic, alcohol-based or heavy cleaners or cleaners containing Ammonia. Only after cleaning the product, if needed, simply apply disinfectant or sanitizer that is in compliance with your local guidelines and regulations.

PRINT TEMPLATES

Mono Totem - 27" x 67"

Document Size: 27.4" x 67.4" (Includes Bleeds)

Finished Size: 27" x 67"

Mono Totem - 27" x 77"

Document Size: 27.4" x 77.4" (Includes Bleeds)

Finished Size: 27" x 77"

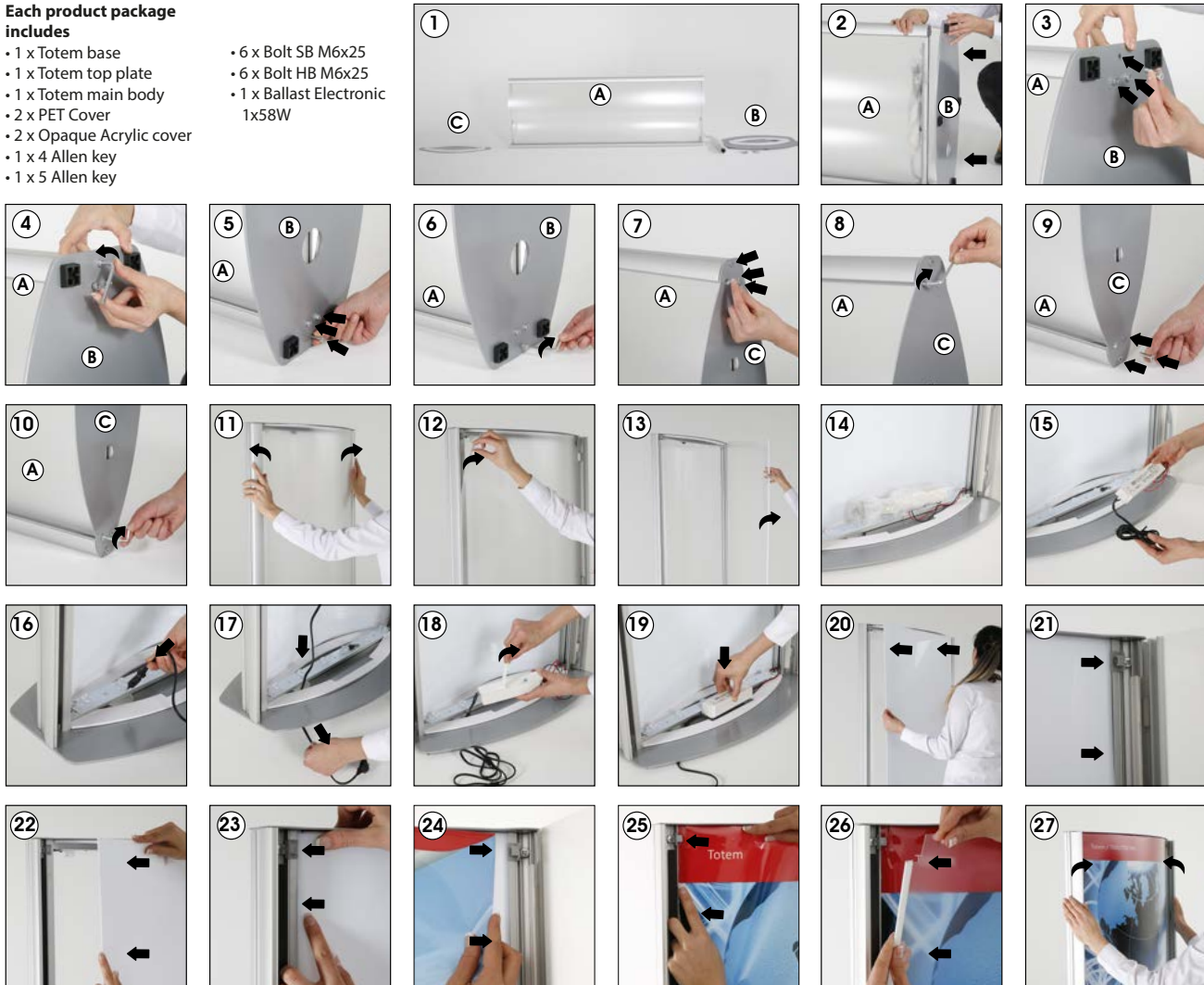


INSTALLATION INSTRUCTIONS

Totem / 1011063H000

Each product package includes

- 1 x Totem base
- 1 x Totem top plate
- 1 x Totem main body
- 2 x PET Cover
- 2 x Opaque Acrylic cover
- 1 x 4 Allen key
- 1 x 5 Allen key
- 6 x Bolt SB M6x25
- 6 x Bolt HB M6x25
- 1 x Ballast Electronic 1x58W



- Please inform the order number on the product or on the carton (e.g. 1/110001394-460) to the place that you have made the purchase if any problem with the product occurs.
- All rights reserved. All pictures, figures and writings are secured internationally by copy-right law.
- Infringements will be sued by civil and legal law.



T: +1 855-478-0652 / info@mtdisplaysllc.com / www.mtdisplaysllc.com