

STAR MAXI LED SINGLE SIDED

MAXI
frame



FRAMELESS LOOKING FABRIC AD SIGNS WITH HOMOGENOUS ILLUMINATION

With its very slim profile, 0.94", Star Maxi LED is a modern way of advertising. It is suitable for textile printed graphics. Practical poster application with clear tape provides smooth look. Complete with wall mounting accessories, Star Maxi LED is a practical advertising solution.

KEY SELECTION ATTRIBUTES

- * A very modern and slim design, single-sided, wall hanging, edge-lit Maxi Frame system, combining long lasting LED technology bulbs, aluminium profile and sewed or nylon strip for application of printed fabric posters.
- * One of the most attractive frame designs in the market with frameless look when viewed from the front side.
- * Powerful illumination is achieved by specially treated acrylic and provides homogenous illumination. Offers evenly diffused lux in all sizes. Depending on the size, 800 to 2800 lux of luminance is achieved.
- * LED bulbs are not seen from outside, since they are embedded in sides of the frame.
- * Suitable for INDOOR applications with 18" X 24", 22" X 28", 20" X 30", 24" X 36", 30" X 40", 36" X 48", 40" X 60" poster sizes in portrait and landscape position. Maximum size 40" X 60".
- * Do not subject the product to outdoor, high humid and vaporized area. Keep the product out of direct rays of sun. Keep away from the fire or severe hot place. Acceptable ambient temperature is max 95°F.
- * Star Maxi LED Single Sided can be ordered in standard sizes. They can also be ordered in special lengths and parts as semi products.
- * Supplied with quality certificates and CE/UL PAT test reports passed. Complies with EN55015 & EN61547.
- * Natural silver-anodized in standard and various RAL colors available with antimicrobial powder coating. Subject to MOQ.
- * One set includes a single sided aluminium profile frame with 0.94" depth, 0.16" channel thickness and embedded LED bulbs; specially treated acrylic backing to diffuse light evenly across graphics; 0.12" clear nylon strips; connectors and cleats; 2 screws, 2 anchors, 2 wall hangers for installation; 1 power supply (12V-2A) with 3,5 meter long cable and 1 EU Plug. UK and US plugs are available, should be specified with order. All electrical components are CE listed.
- * Has no switch. Optional dimmer is available. Adjusting the light from dark to max lux of LED illuminated frame.
- * Used with 2 wall mounting fixtures on the back. Moving hangers let the mounting in portrait and landscape position.
- * Fabric is not included in the original pack.
- * Recommended fabric thickness for digital printing is 0.02". Thickness of the profile is 4mm. Thickness of nylon strip is 0.12". The pull sticker in 0.02" thickness must be sewed on the fabric for taking out the poster when fitted into the channels.
- * 13mm on each side of the fabric into Maxi Profiles, so 0.02" on each Fabric Poster is not seen on the poster. Please arrange accordingly.
- * Additional print shares suggested for Maxi Frame's Fabric Posters: 1.1" between 7.87" X 29.53", 0.79" between 29.53"-59.06", 0.59" between 59.06"-118.11". These values might vary according to the fabric used.
- * Profiles and connector parts of Star Maxi LED Single Sided for the required sizes are packed unassembled in a single box with an easy mounting instruction sheet. Fixing tools are included in each frame.
- * Products are suitable to use 7/16. For using the LED frame for 24 hours a day and 7 days a week, please ask for special 7/24 power supplies.



One product,
two positions
(landscape&portrait)



Portrait



COLOURS IN STOCK



Silver

SUITABLE FOR

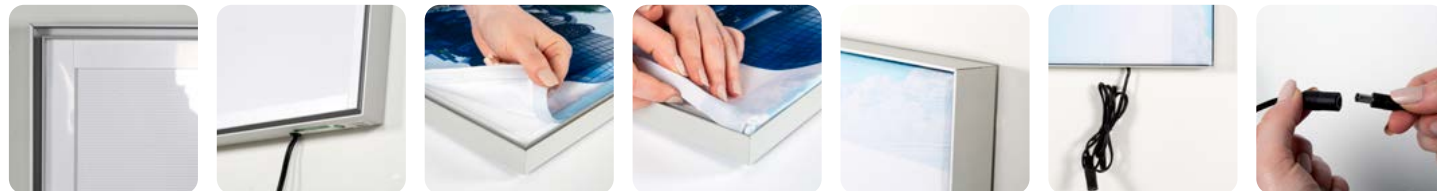
Star Maxi LED Single Sided can be used for INDOOR applications, for signage needs in many locations like shopping centers, markets, groceries, hotels, offices airports, shops and stores, hospitals, schools, apartments, banks, car dealers, restaurants, telecom companies, insurance companies, libraries, museums, travel agencies and many more.

WATCH VIDEO

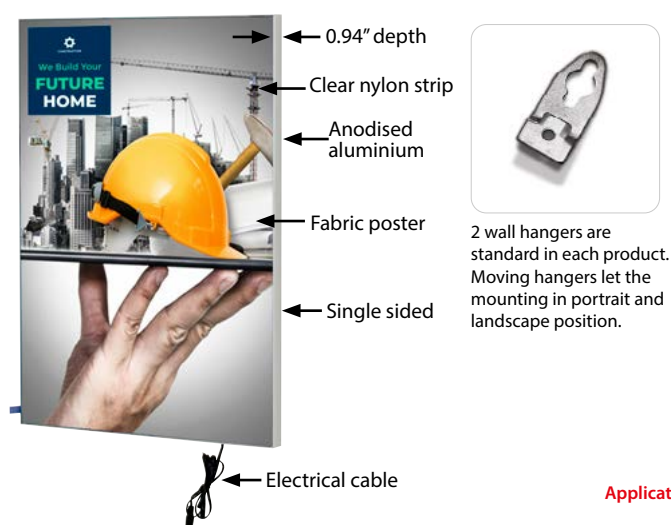


Watch video at our website
www.mtdisplaysllc.com

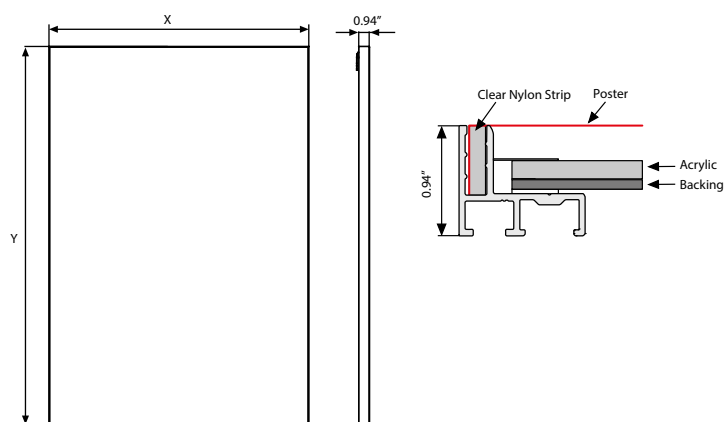
FEATURES



EXPLODED VIEW



TECHNICAL DRAWING



Application of nylon strip by sew-on process



Application of nylon strip by double sided tape



ARTICLES

| ARTICLE | EXTERNAL (x-y) | LIGHTING | WEIGHT | PACKING SIZE |
|------------|----------------|---------------|--------------|-------------------------|
| | | | WITH PACKING | *W X H X D |
| UMLSTN0018 | 18" X 24" | 2500-2700 LUX | 5.952 lbs | 20" X 28.35" X 2.95" |
| UMLSTN0022 | 22" X 28" | 2400-2600 LUX | 8.377 lbs | 23.98" X 32.36" X 2.95" |
| UMLSTN0023 | 20" X 30" | 2300-2600 LUX | 8.157 lbs | 21.97" X 34.33" X 2.95" |
| UMLSTN0024 | 24" X 36" | 2200-2500 LUX | 11.904 lbs | 25.98" X 40.35" X 2.95" |
| UMLSTN0034 | 30" X 40" | 2200-2500 LUX | 21.605 lbs | 37.99" X 44.33" X 2.95" |
| UMLSTN0036 | 36" X 48" | 2100-2400 LUX | 23.368 lbs | 37.99" X 52.36" X 2.95" |
| UMLSTN0046 | 40" X 60" | 2100-2400 LUX | 32.187 lbs | 41.97" X 64.33" X 2.95" |

MAXIMUM SIZE: 1.57"X47.24"

OPTIONAL ACCESSORIES



Optional dimmer to go with LED illuminated frame.. Simply jack the dimmer in frame and then into powersupply. It adjust the light from dark to max lux of LED illuminated frame.
UYUP445550

COMPONENTS OF MAXI FRAMES



Clear Nylon Strip
0.51" x 0.12", 100
meters. UYUP460235



Clear Nylon Strip with tape
0.51" x 0.12", 50 meters.
UYUP460220



T: +1 855-478-0652 / info@mtdisplaysllc.com / www.mtdisplaysllc.com

PHYSICAL DATA

Material

Aluminium profile frame with 0.94" depth, clear nylon strips, metal connectors, acrylic backing, LED bulbs.

Poster Material & Thickness

Recommended fabric thickness for digital printing is 0.02". Thickness of the channel is 0.16". Thickness of nylon strip is 0.12". The pull sticker in 0.02" thickness must be sewed on the fabric to take out the poster from channels.

Surface Finish

Natural silver-anodized in standard and various RAL colors available with antimicrobial powder coating. Subject to MOQ. Call for custom color requests.

Storage Conditions

Goods should be stored at 32°F to 77°F in a dry place. Store in the original package.

Recycled Content

Up to 78% recycled content used.

Warranty

All products are guaranteed for 2 years by MT Displays with below conditions:

[Warranty Conditions](#)

Installation Considerations

Profiles and connector parts of Star Maxi LED Single Sided for the required sizes are packed unassembled in a single box with an easy mounting instruction sheet. Fixing tools are included in each frame. Supplied with quality certificates and CE/UL PAT test reports passed. Complies with

EN55015 & EN61547. One set includes a single sided aluminium profile frame with 0.94" depth, 0.16" channel thickness and embedded LED bulbs; specially treated acrylic backing to diffuse light evenly across graphics; 0.12" clear nylon strips; connectors and cleats; 2 screws, 2 anchors, 2 wall hangers for installation; 1 power supply (12V-2A) with 0.14" meter long cable and 1 EU Plug. UK and US plugs are available, should be specified with order. All electrical components are CE listed. Has no switch. Optional dimmer is available. Adjusting the light from dark to max lux of LED illuminated frame. Products are suitable to use 7/16. For using the LED frame for 24 hours a day and 7 days a week, please ask for special 7/24 power supplies. Used with 2 wall mounting fixtures on the back. Moving hangers let the mounting in portrait and landscape position. Fabric is not included in the original pack. 0.51" on each side of the fabric into Maxi Profiles, so 1.02" on each Fabric Poster is not seen on the poster. Please arrange accordingly. Additional print shares suggested for Maxi Frame's Fabric Posters: 28mm between 7.87"-29.53", 0.79" between 29.53"-59.06", 0.59" between 59.06"-118.11". These values might vary according to the fabric used. Star Maxi LED Single Sided can be ordered in standard sizes. They can also be ordered in special lengths and parts as semi products.

Design Considerations

A very modern and slim design, single-sided, wall hanging, edge-lit Maxi Frame system, combining long lasting LED technology bulbs, aluminium profile and sewed or nylon strip for application of printed fabric posters. One of the most attractive frame designs in the market with frameless

look when viewed from the front side. Powerful illumination is achieved by specially treated acrylic and provides homogenous illumination. Offers evenly diffused lux in all sizes. Depending on the size, 800 to 2800 lux of luminance is achieved. LED bulbs are not seen from outside, since they are embedded in sides of the frame. Suitable for INDOOR applications with 18" X 24", 22" X 28", 20" X 30", 24" X 36", 30" X 40", 36" X 48", 40" X 60" poster sizes in portrait and landscape position. Maximum size 33.46"x47.24". Do not subject the product to outdoor, high humid and vaporized area. Keep the product out of direct rays of sun. Keep away from the fire or severe hot place. Acceptable ambient temperature is max 95°F.

Cleaning and Disinfecting

Clean your displays, with damp microfiber clothes, rinsed with simply water or warm, soapy or gentle shampooed water. Avoid using vinegar, abrasive, acidic, alcohol-based or heavy cleaners or cleaners containing Ammonia. Only after cleaning the product, if needed, simply apply disinfectant or sanitizer that is in compliance with your local guidelines and regulations.

Cleaning and Disinfecting

CE/UL Patent approved.

PRINT TEMPLATES

Maxi Frame with LED - 18"x24"

Document Size: 20.36" x 26.36" (Includes Bleeds)

Finished Size: 18"x24"

Star Maxi LED Single Sided - 22"x28"

Document Size: 24.36" x 30.36" (Includes Bleeds)

Finished Size: 22"x28"

Star Maxi LED Single Sided - 20"x30"

Document Size: 22.36" x 32.36" (Includes Bleeds)

Finished Size: 20"x30"

Star Maxi LED Single Sided - 24"x36"

Document Size: 26.36" x 38.36" (Includes Bleeds)

Finished Size: 24"x36"

Star Maxi LED Single Sided - 30"x40"

Document Size: 32.36" x 42.36" (Includes Bleeds)

Finished Size: 30"x40"

Star Maxi LED Single Sided - 36"x48"

Document Size: 38.36" x 50.36" (Includes Bleeds)

Finished Size: 36"x48"

Star Maxi LED Single Sided - 40"x60"

Document Size: 42.36" x 62.36" (Includes Bleeds)

Finished Size: 40"x60"

| 24mm/ Star Maxi LED | Size Available | Power Consumption | Power Supply Recommended | Luminance |
|------------------------|---------------------|----------------------|-----------------------------|-----------|
| Single Sided | Poster Size | Single | 12 Vdc, Ampere | LUX |
| UMLSTN0023 | 20"x30" / 508x762 | 18,5W/1,55A | 2A | 1200-1500 |
| UMLSTN0034 | 30"x40" / 762x1016 | 26W/2,1A | 3A | 900-1000 |
| X | 40"x60" / 1016x1524 | X | X | X |

| POWER SUPPLY | |
|--------------|----------------------------|
| ARTICLE | DESCRIPTION |
| UYPLD00010 | Power supply EU 3,34A 7/24 |
| UYPLD00011 | Power supply EU 6,67A 7/24 |
| UYPLD00012 | Power supply EU 8,5A 7/24 |
| UYPLD00013 | Power supply EU 11,5A 7/24 |

Products are suitable to use 7/16.
If 7/24 use required, please order individually as 7/24 power supplies as below:

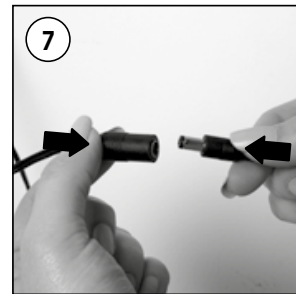
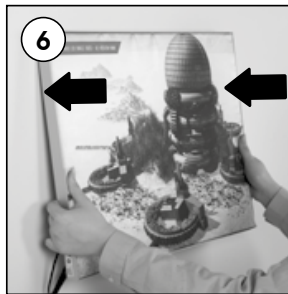
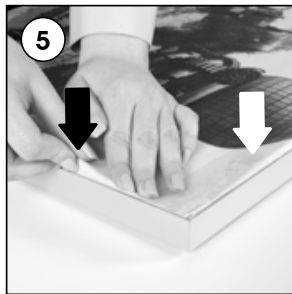
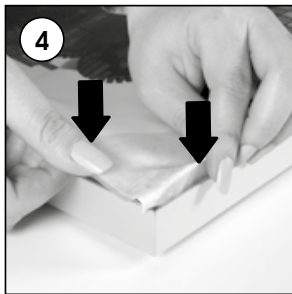
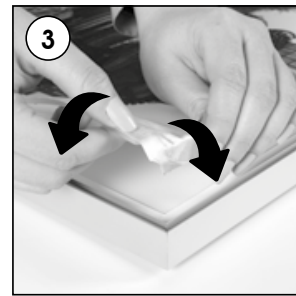
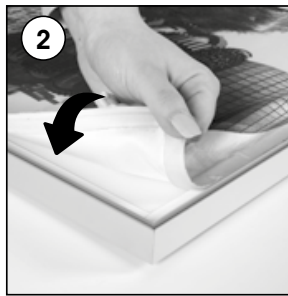
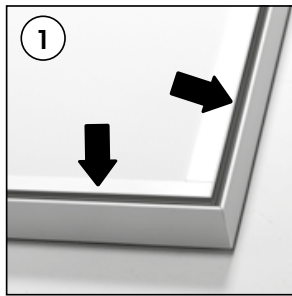


INSTALLATION INSTRUCTIONS

Star Maxi LED Single Sided / 1010281H000

Each product package includes

- 2 x Screw
- 2 x Anchor
- 2 x Hanger
- 1 x Power supply 12V-2A
- 1 x EU Plug



Caution!

- 1- Do not step on the light panel nor place the heavy object on the light panel.
- 2- Do not pull the cable with excessive force.
- 3- Use correct capacity and voltage of D.C. power supply.
Failure to observe this instruction could result in breakdown.
- 4- Do not touch the light panel or electrical devices with wet hand. Failure to observe this instruction could result in electrical shocks and severe injuries.
- 5- Do not subject this light panel to outdoor, high humid and vaporized area. Failure to observe this instruction could result in breakdown.
- 6- Keep this out of the direct rays of the sun. Failure to observe this instruction could result in color changes of acrylic plate.
- 7- Keep away from fire or severe hot place. Acceptable ambient temperature is max.35°C Failure to observe this instruction could result in shorten the life time and degradation of brightness of LED light source.



Portrait



Landscape

- Please inform the order number on the product or on the carton (e.g. 1/110001394-460) to the place that you have made the purchase if any problem with the product occurs.
- All rights reserved. All pictures, figures and writings are secured internationally by copy-right law. Infringements will be sued by civil and legal law.

This technical sheet's contents are all subject to update and modification at MT Displays' exclusive discretion. There is nothing official about this document. For final and legally binding information, please get in touch with the sales staff at MT Displays.



T: +1 855-478-0652 / info@mtdisplaysllc.com / www.mtdisplaysllc.com