

SNAP FRAME 1.18"



BIG SIZE "CLICK CLACK" POSTER FRAMES WITH THINNEST POSSIBLE SIDES

The poster frame combines the desirable features of affordability with style and ease of use. The snap frame has secured its name and reputation owing to the clip style, hinge support structures that simply flip open and snap back into place for the easy rotation of graphics. The removal and replacement of images can be achieved in a matter of seconds with the clip metal sign frame. Best of all, the poster holder is a wall mountable display unit whereby the front loading design of the structure means you will not have to disassemble and reassemble the frame once it has been mounted. The poster frame can be positioned in either portrait or landscape presentation, with screws and anchors supplied.

KEY SELECTION ATTRIBUTES

- * Easy to mount, simple to carry.
- * "Click Clack" snap open working principle
- * Ideal for every poster size.
- * Frame with a slim profile design.
- * Mitred and round corner alternatives.



- * Natural silver-anodized and various RAL colors available with antimicrobial powder coating.
- * High impact molded plastic backing.
- * Anti-glare poster cover sheet.
- * Standard with screws and anchors for wall hanging in landscape or portrait positions.
- * Optional V-Hangers for easy wall mounting.
- * Max length 53.14" and max perimeter 98.42".



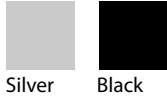
Silver Anodised, mitred



Silver Anodised, round

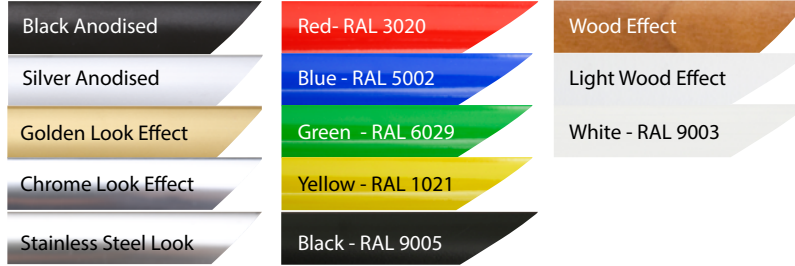


COLOURS IN STOCK

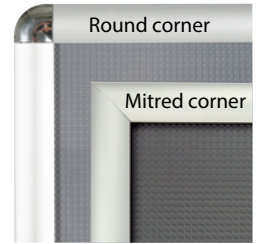


Silver Black

COLOUR OPTIONS



CORNER TYPES



SNAP FRAME FAMILY



SUITABLE FOR

Snap Frame can be used for INDOOR applications, for signage needs in many locations like shopping centers, markets, groceries, hotels, offices airports, shops and stores, hospitals, schools, apartments and many more.

WATCH VIDEO

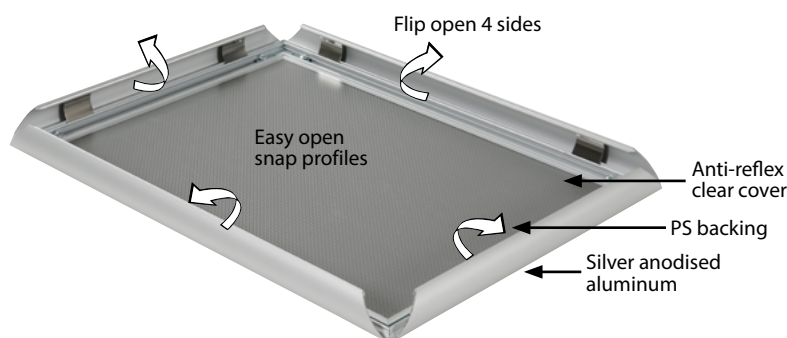


Watch video at our website
www.mtdisplays.com

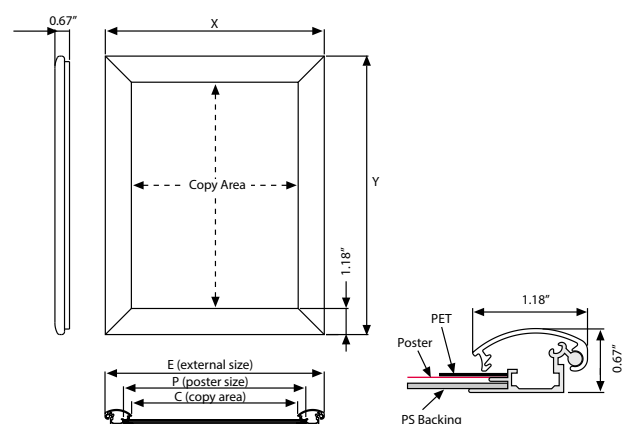
FEATURES



EXPLODED VIEW



TECHNICAL DRAWING

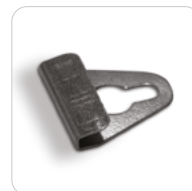


T: +1 855-478-0652 / info@mtdisplaysllc.com / www.mtdisplaysllc.com

ARTICLES

MITRED ARTICLE	ROUND ARTICLE	EXTERNAL (x-y)	POSTER	COPY	WEIGHT	PACKING SIZE
					WITH PACKING	*W X H X D
UCN305N057	UCN300N057	6.69" X 8.69"	5" X 7"	4.41" X 6.41"	0.970 lbs	11.30" X 9.37" X 1.22"
UCN305N009	UCN300N009	7.69" X 10.69"	6" X 9"	5.41" X 8.41"	1.168 lbs	8.39" X 11.38" X 1.22"
UCN305N010	UCN300N010	9.69" X 11.69"	8" X 10"	7.41" X 9.41"	1.366 lbs	10.39" X 12.36" X 1.22"
UCN305N081	UCN300N081	10.19" X 12.69"	8.5" X 11"	7.91" X 10.41"	1.410 lbs	10.87" X 13.39" X 1.22"
UCN305N014	UCN300N014	12.69" X 15.69"	11" X 14"	10.41" X 13.41"	1.829 lbs	13.39" X 16.38" X 1.22"
UCN305N017	UCN300N017	12.69" X 18.69"	11" X 17"	10.41" X 16.41"	2.050 lbs	13.39" X 19.37" X 1.22"
UCN305N012	UCN300N012	15.69" X 23.69"	14" X 22"	13.41" X 21.41"	3.042 lbs	16.38" X 24.37" X 1.22"
UCN305N016	UCN300N016	17.69" X 21.69"	16" X 20"	15.41" X 19.41"	3.042 lbs	18.39" X 22.36" X 1.22"
UCN305N018	UCN300N018	19.69" X 25.69"	18" X 24"	17.41" X 23.41"	3.791 lbs	20.39" X 26.38" X 1.22"
UCN305N023	UCN300N023	21.69" X 31.69"	20" X 30"	19.41" X 29.41"	4.519 lbs	22.44" X 32.28" X 1.22"
UCN305N022	UCN300N022	23.69" X 29.69"	22" X 28"	21.41" X 27.41"	4.629 lbs	24.37" X 30.39" X 1.22"
UCN305N024	UCN300N024	25.69" X 37.69"	24" X 36"	23.41" X 35.41"	6.812 lbs	26.38" X 38.39" X 1.22"
UCN305N074	UCN300N074	28.69" X 41.69"	27" X 40"	26.41" X 39.41"	7.583 lbs	29.37" X 42.36" X 1.22"
UCN305N034	UCN300N034	31.69" X 41.69"	30" X 40"	29.41" X 39.41"	7.936 lbs	32.28" X 42.52" X 1.22"
UCN305N046	UCN300N046	41.69" X 61.69"	40" X 60"	39.41" X 59.41"	14.881 lbs	41.73" X 61.81" X 1.22"

OPTIONAL ACCESSORIES



V Hanger / UYAA011010

PHYSICAL DATA

Material

1.18" aluminum profiles.
PET poster cover, High impact, molded PS or ABS backing.

Poster Material & Thickness

0.0039" – 0.0078" for standard product. Max poster thickness 0.19" for mitred corner, 0.078" for round corner. Any non-standard poster thicknesses should be indicated with order.

Surface Finish

Silver anodized or black colour, antimicrobial powder coating. Custom colors also available, call for custom color requests.

Recycled Content

Up to 78% recycled content used.

Warranty

All products are guaranteed for 3 years by MT Displays with below conditions:
[Warranty Conditions](#)

Installation Considerations

Each frame includes wall mounting accessories (4 screws & 4 plugs). Each frame is packed individually in a cardboard box.

Storage Conditions

Goods should be stored at 32°F to 77°F in a dry place. Store in the original package.

Design Considerations

Suitable for silk screen printing, max. letter height is 0.78".

Cleaning and Disinfecting

Clean your displays, with damp microfiber clothes, rinsed with simply water or warm, soapy or gentle shampooed water. Avoid using vinegar, abrasive, acidic, alcohol-based or heavy cleaners or cleaners containing Ammonia. Only after cleaning the product, if needed, simply apply disinfectant or sanitizer that is in compliance with your local guidelines and regulations.

PRINT TEMPLATES

Snap Frame 1.18" - 5"x7"

Document Size: 5.40" x 7.40" (Includes Bleeds)
Finished Size: 5"x7" (127x177.8 mm) [Print](#)

Snap Frame 1.18" - 6"x9"

Document Size: 6.4" x 9.4" (Includes Bleeds)
Finished Size: 6"x9" (152.4x228.6 mm)

Snap Frame 1.18" - 8"x10"

Document Size: 8.4" x 10.4" (Includes Bleeds)
Finished Size: 8"x10" (203.2x254 mm)

Snap Frame 1.18" - 8.5"x11"

Document Size: 8.9" x 11.4" (Includes Bleeds)
Finished Size: 8.5"x11" (215.9x279.4 mm)

Snap Frame 1.18" - 11"x14"

Document Size: 11.4" x 14.4" (Includes Bleeds)
Finished Size: 11"x14" (279.4x355.6 mm)

Snap Frame 1.18" - 11"x17"

Document Size: 11.4" x 17.4" (Includes Bleeds)
Finished Size: 11"x17" (279.4x431.8 mm)

Snap Frame 1.18" - 14"x22"

Document Size: 14.4" x 22.4" (Includes Bleeds)
Finished Size: 14"x22" (355.6x558.8 mm)

Snap Frame 1.18" - 16"x20"

Document Size: 16.4" x 20.4" (Includes Bleeds)
Finished Size: 16"x20" (406.4x508 mm)

Snap Frame 1.18" - 18"x24"

Document Size: 18.4" x 24.4" (Includes Bleeds)
Finished Size: 18"x24" (457.2x609.6 mm)

Snap Frame 1.18" - 20"x30"

Document Size: 20.4" x 30.4" (Includes Bleeds)
Finished Size: 20"x30" (508x762 mm) [Print](#)

Snap Frame 1.18" - 22"x28"

Document Size: 22.4" x 28.4" (Includes Bleeds)
Finished Size: 22"x28" (558.8x711.1 mm)

Snap Frame 1.18" - 24"x36"

Document Size: 24.4" x 36.4" (Includes Bleeds)
Finished Size: 24"x36" (609.6x914.4 mm)

Snap Frame 1.18" - 27"x40"

Document Size: 27.4" x 40.4" (Includes Bleeds)
Finished Size: 27"x40" (685.8x1016 mm)

Snap Frame 1.18" - 30"x40"

Document Size: 30.4" x 40.4" (Includes Bleeds)
Finished Size: 30"x40" (762x1016 mm) [Print](#)

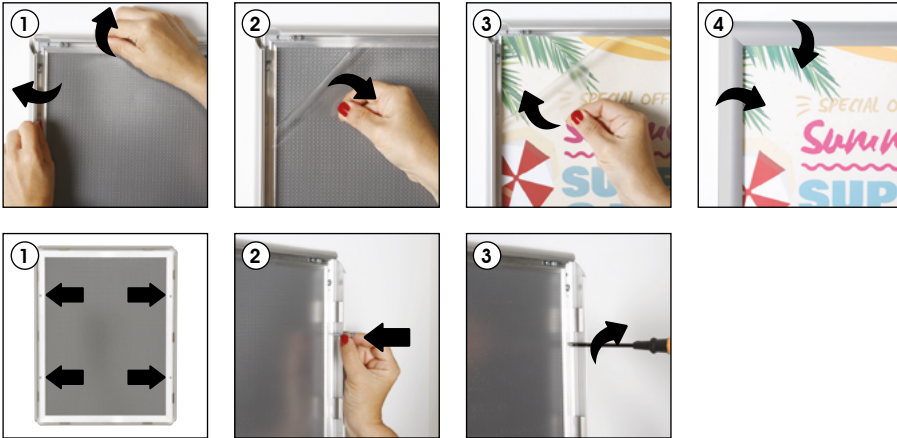
Snap Frame 1.18" - 40"x60"

Document Size: 40.4" x 60.4" (Includes Bleeds)
Finished Size: 40"x60" (1016x1524 mm) [Print](#)



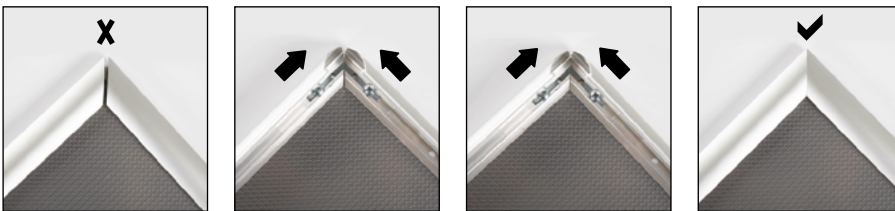
INSTALLATION INSTRUCTIONS

Snap Frame 1.18" / 1001846



Screw & anchor mounting

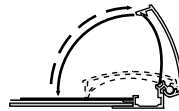
Fixing uneven corners



1. If your frame corners are slightly uneven, there is an easy fixing. Follow these steps with care, as the corners are sharp.

2. Locate the metal brackets on the back of your frame near the gap and loosen the screws. Push the two sides of the frame together and retighten the screws.

3. Your frame corners should be perfectly aligned!



- Please inform the order number on the product or on the carton (e.g. 1/110001394-460) to the place that you have made the purchase if any problem with the product occurs.
- All rights reserved. All pictures, figures and writings are secured internationally by copy-right law. Infringements will be sued by civil and legal law.



This technical sheet's contents are all subject to update and modification at MT Displays' exclusive discretion. There is nothing official about this document. For final and legally binding information, please get in touch with the sales staff at MT Displays.



T: +1 855-478-0652 / info@mtdisplaysllc.com / www.mtdisplaysllc.com