

## SNAP FRAME 1"



### "CLICK CLACK" QUICK POSTER FRAMES FOR DISPLAYING YOUR ADS

This quick clip metal sign frame is a wall mounted display that holds graphics between 5"x7" – 40"-60" sizes and those graphics are safely protected by a clear non-glare lens against wear and tear. The lens also prevents reflection.

The poster frame combines the desirable features of affordability with style and ease of use. The snap frame has secured its name and reputation owing to the clip style, hinge support structures that simply flip open and snap back into place for the easy rotation of graphics. The removal and replacement of images can be achieved in a matter of seconds with the clip metal sign frame. Best of all, the poster holder is a wall mountable display unit whereby the front loading design of the structure means you will not have to disassemble and reassemble the frame once it has been mounted. The poster frame can be positioned in either portrait or landscape presentation, with screws and anchors supplied.

### KEY SELECTION ATTRIBUTES

- \* Easy to mount, simple to carry.
- \* Ideal for various small-sized posters.
- \* Frame with a slim profile design and mitred corners.
- \* Natural silver-anodized and various RAL colors available with antimicrobial powder coating.
- \* High impact molded plastic backing.
- \* Anti-glare poster cover sheet.
- \* Standard with screws and anchors for wall hanging in landscape or portrait positions.
- \* Optional V-Hangers for easy wall mounting.
- \* Optional support for counter-top standing.
- \* Max length 8.66" and max perimeter 251".



Silver Anodised, mitred



Silver Anodised, round



Black Anodised



Wood Look Effect



Light Wood Effect



Golden Look Effect



Chrome Look Effect



Stainless Steel Look



Black



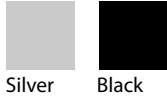
White



Red



## COLOURS IN STOCK

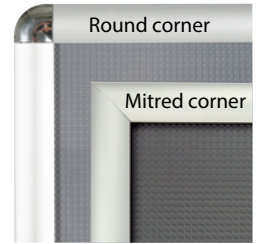


Silver Black

## COLOUR OPTIONS



## CORNER TYPES



## SNAP FRAME FAMILY



## SUITABLE FOR

Snap Frame can be used for **INDOOR** applications, for signage needs in many locations like shopping centers, markets, groceries, hotels, offices airports, shops and stores, hospitals, schools, apartments and many more.

## WATCH VIDEO

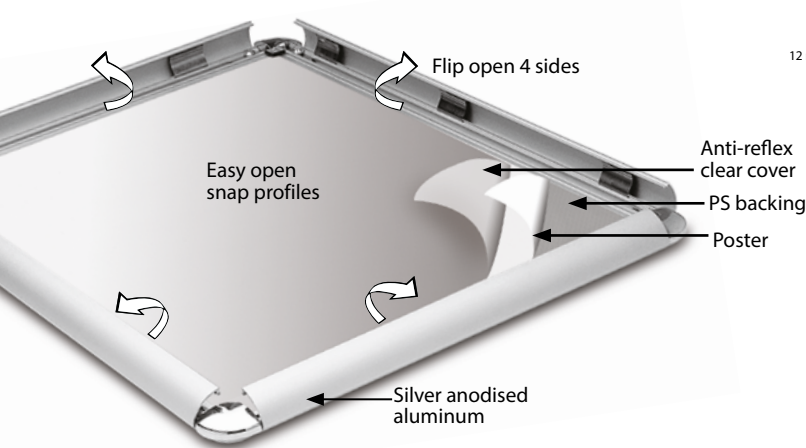


Watch video at our website  
[www.mtdisplays.com](http://www.mtdisplays.com)

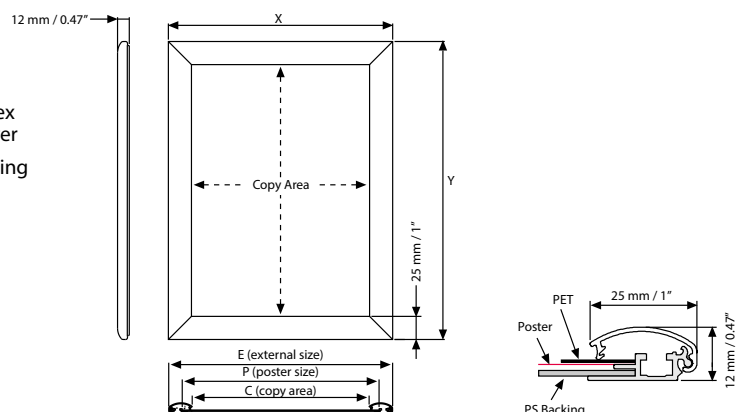
## FEATURES



## EXPLODED VIEW



## TECHNICAL DRAWING



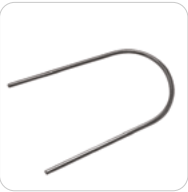
T: +1 855-478-0652 / [info@mtdisplaysllc.com](mailto:info@mtdisplaysllc.com) / [www.mtdisplaysllc.com](http://www.mtdisplaysllc.com)

ARTICLES

SILVER MITRED	SILVER ROUND	BLACK MITRED	BLACK ROUND	GOLD	CHROME	STAINLESS	DARK WOOD	LIGHT WOOD	EXTERNAL (x-y)	POSTER	COPY	WEIGHT	PACKING SIZE
												WITH PACKING	*W X H X D
UCN255N057	-	UCN255B057	-	-	UCN255K014	UCN255S057	UCN255W057	UCN255W157	6.18" X 8.19"	5" X 7"	4.29" X 6.30"	0.551 lbs	7.48" X 9.45" X 0.83"
UCN255N009	-	UCN255B009	-	UCN255G009	UCN255K016	UCN255S009	UCN255W009	UCN255W109	7.20" X 10.20"	6" X 9"	5.31" X 8.31"	0.771 lbs	8.27" X 9.06" X 0.83"
UCN255N010	-	UCN255B010	-	-	UCN255K018	UCN255S010	UCN255W010	UCN255W110	9.17" X 11.18"	8" X 10"	7.28" X 9.29"	0.837 lbs	10.63" X 12.20" X 0.83"
UCN255N081	-	UCN255B081	-	UCN255G081	UCN255K023	UCN255S081	UCN255W081	UCN255W181	9.69" X 12.17"	8.5" X 11"	7.80" X 10.28"	1.102 lbs	10.63" X 12.20" X 0.83"
UCN255N011	-	UCN255B011	-	-	UCN255K022	UCN255S011	UCN255W011	UCN255W111	12.17" X 15.20"	11" X 14"	10.28" X 13.31"	1.433 lbs	13.39" X 16.54" X 0.83"
UCN255N017	UCN250N017	UCN255B017	UCN250B017	-	UCN255K024	UCN255S017	UCN255W017	UCN255W117	12.17" X 18.19"	11" X 17"	10.28" X 16.30"	1.873 lbs	12.99" X 18.90" X 0.83"
UCN255N014	-	UCN255B014	-	-	UCN255K074	UCN255S014	UCN255W014	UCN255W114	15.20" X 23.19"	14" X 22"	13.31" X 21.30"	2.711 lbs	16.54" X 24.41" X 0.83"
UCN255N016	UCN250N016	UCN255B016	UCN250B016	-	UCN255K034	UCN255S016	UCN255W016	UCN255W116	17.20" X 21.18"	16" X 20"	15.31" X 19.29"	2.425 lbs	18.50" X 22.44" X 0.83"
UCN255N018	UCN250N018	UCN255B018	UCN250B018	-	UCN255K046	UCN255S018	UCN255W018	UCN255W118	19.21" X 25.50"	18" X 24"	17.32" X 23.31"	2.645 lbs	20.08" X 25.98" X 0.83"
UCN255N023	UCN250N023	UCN255B023	UCN250B023	UCN255G023		UCN255S023	UCN255W023	UCN255W123	21.18" X 31.18"	20" X 30"	19.29" X 29.29"	3.637 lbs	22.05" X 31.89" X 0.91"
UCN255N022	UCN250N022	UCN255B022	UCN250B022	-		UCN255S022	UCN255W022	UCN255W122	23.19" X 29.17"	22" X 28"	21.30" X 27.28"	3.637 lbs	24.02" X 30.31" X 0.83"
UCN255N024	UCN250N024	UCN255B024	UCN250B024	-		UCN255S024	UCN255W024	UCN255W124	25.20" X 37.17"	24" X 36"	23.31" X 35.28"	5.070 lbs	25.98" X 35.58" X 0.83"
UCN255N074	-	UCN255B074	-	-		UCN255S074	UCN255W074	UCN255W174	28.19" X 41.18"	27" X 40"	26.30" X 39.29"	6.613 lbs	29.53" X 42.13" X 0.83"
UCN255N034	UCN250N034	UCN255B034	UCN250B034	UCN255G034		UCN255S034	UCN255W034	UCN255W134	31.18" X 41.18"	30" X 40"	29.29" X 39.29"	6.945 lbs	31.89" X 42.13" X 0.91"
UCN255N046	UCN250N046	UCN255B046	-	UCN255G046		UCN255S046	UCN255W046	UCN255W146	41.18" X 61.18"	40" X 60"	39.29" X 59.29"	13.227 lbs	41.73" X 61.81" X 0.91"

RED	WHITE	BLACK	EXTERNAL (x-y)	POSTER	COPY	WEIGHT	PACKING SIZE
						WITH PACKING	*W X H X D
UCN2553057	UCN2552057	UCN2551057	6.18" X 8.19"	5" X 7"	4.29" X 6.30"	0.551 lbs	7.48" X 9.45" X 0.83"
UCN2553009	UCN2552009	UCN2551009	7.20" X 10.20"	6" X 9"	5.31" X 8.31"	0.771 lbs	8.27" X 9.06" X 0.83"
UCN2553010	UCN2552010	UCN2551010	9.17" X 11.18"	8" X 10"	7.28" X 9.29"	0.837 lbs	10.63" X 12.20" X 0.83"
UCN2553081	UCN2552081	UCN2551081	9.69" X 12.17"	8.5" X 11"	7.80" X 10.28"	1.102 lbs	10.63" X 12.20" X 0.83"
UCN2553011	UCN2552011	UCN2551011	12.17" X 15.20"	11" X 14"	10.28" X 13.31"	1.433 lbs	13.39" X 16.54" X 0.83"
UCN2553017	UCN2552017	UCN2551017	12.17" X 18.19"	11" X 17"	10.28" X 16.30"	1.873 lbs	12.99" X 18.90" X 0.83"
UCN2553014	UCN2552014	UCN2551014	15.20" X 23.19"	14" X 22"	13.31" X 21.30"	2.711 lbs	16.54" X 24.41" X 0.83"
UCN2553016	UCN2552016	UCN2551016	17.20" X 21.18"	16" X 20"	15.31" X 19.29"	2.425 lbs	18.50" X 22.44" X 0.83"
UCN2553018	UCN2552018	UCN2551018	19.21" X 25.50"	18" X 24"	17.32" X 23.31"	2.645 lbs	20.08" X 25.98" X 0.83"
UCN2553023	UCN2552023	UCN2551023	21.18" X 31.18"	20" X 30"	19.29" X 29.29"	3.637 lbs	22.05" X 31.89" X 0.91"
UCN2553022	UCN2552022	UCN2551022	23.19" X 29.17"	22" X 28"	21.30" X 27.28"	3.637 lbs	24.02" X 30.31" X 0.83"
UCN2553024	UCN2552024	UCN2551024	25.20" X 37.17"	24" X 36"	23.31" X 35.28"	5.070 lbs	25.98" X 35.58" X 0.83"
UCN2553074	UCN2552074	UCN2551074	28.19" X 41.18"	27" X 40"	26.30" X 39.29"	6.613 lbs	29.53" X 42.13" X 0.83"
UCN2553034	UCN2552034	UCN2551034	31.18" X 41.18"	30" X 40"	29.29" X 39.29"	6.945 lbs	31.89" X 42.13" X 0.91"
UCN2553046	UCN2552046	UCN2551046	41.18" X 61.18"	40" X 60"	39.29" X 59.29"	13.227 lbs	41.73" X 61.81" X 0.91"

OPTIONAL ACCESSORIES



Counter Support / UYUP057000  
Optional counter support  
Frames to be ordered specially  
for compatibility.



V Hanger / UYAA011010



Screws & plugs / UYUP360110

**Please Note: UYUP057000X1000 is optional, and has to be ordered separately. Adding counter support is possible, in case the frame is ordered as suitable for counter support.**

PHYSICAL DATA

**Material**  
1" aluminum profiles.  
PET poster cover, High impact, molded PS or ABS backing.

**Poster Material & Thickness**  
0.0039" – 0.0078" standard product. Max poster thickness is 0.078". Any non-standard poster thicknesses should be indicated with order.

**Surface Finish**  
Silver anodized or black colour, antimicrobial powder coating. Custom colors also available, call for custom color requests.

**Recycled Content**  
Up to 70% recycled content used.

**Warranty**  
All products are guaranteed for 3 years by MT Displays with below conditions:  
[Warranty Conditions](#)

**Installation Considerations**  
Each frame includes wall mounting accessories. Each frame is packed individually in a cardboard box.

**Storage Conditions**  
Goods should be stored at 32F° to 77°F in a dry place. Store in the original package.

**Design Considerations**  
Suitable for silk screen printing, max. letter height is 0.59".

**Cleaning and Disinfecting**  
Clean your displays, with damp microfiber clothes, rinsed with simply water or warm, soapy or gentle shampooed water. Avoid using vinegar, abrasive, acidic, alcohol-based or heavy cleaners or cleaners containing Ammonia. Only after cleaning the product, if needed, simply apply disinfectant or sanitizer that is in compliance with your local guidelines and regulations.

**Certifications / Patents**





## PRINT TEMPLATES

### Snap Frame 1" - 5"x7"

Document Size: 5.40" x 7.40" (Includes Bleeds)  
Finished Size: 5"x7" (127x177.8 mm)

### Snap Frame 1" - 6"x9"

Document Size: 6.4" x 9.4" (Includes Bleeds)  
Finished Size: 6"x9" (152.4x228.6 mm)

### Snap Frame 1" - 8"x10"

Document Size: 8.4" x 10.4" (Includes Bleeds)  
Finished Size: 8"x10" (203.2x254 mm)

### Snap Frame 1" - 8.5"x11"

Document Size: 8.9" x 11.4" (Includes Bleeds)  
Finished Size: 8.5"x11" (215.9x279.4 mm)

### Snap Frame 1" - 11"x14"

Document Size: 11.4" x 14.4" (Includes Bleeds)  
Finished Size: 11"x14" (279.4x355.6 mm)

### Snap Frame 1" - 11"x17"

Document Size: 11.4" x 17.4" (Includes Bleeds)  
Finished Size: 11"x17" (279.4x431.8 mm)

### Snap Frame 1" - 14"x22"

Document Size: 14.4" x 22.4" (Includes Bleeds)  
Finished Size: 14"x22" (355.6x558.8 mm)

### Snap Frame 1" - 16"x20"

Document Size: 16.4" x 20.4" (Includes Bleeds)  
Finished Size: 16"x20" (406.4x508 mm)

### Snap Frame 1" - 18"x24"

Document Size: 18.4" x 24.4" (Includes Bleeds)  
Finished Size: 18"x24" (457.2x609.6 mm)

### Snap Frame 1" - 20"x30"

Document Size: 20.4" x 30.4" (Includes Bleeds)  
Finished Size: 20"x30" (508x762 mm) [Print](#)

### Snap Frame 1" - 22"x28"

Document Size: 22.4" x 28.4" (Includes Bleeds)  
Finished Size: 22"x28" (558.8x711.1 mm)

### Snap Frame 1" - 24"x36"

Document Size: 24.4" x 36.4" (Includes Bleeds)  
Finished Size: 24"x36" (609.6x914.4 mm)

### Snap Frame 1" - 27"x40"

Document Size: 27.4" x 40.4" (Includes Bleeds)  
Finished Size: 27"x40" (685.8x1016 mm)

### Snap Frame 1" - 30"x40"

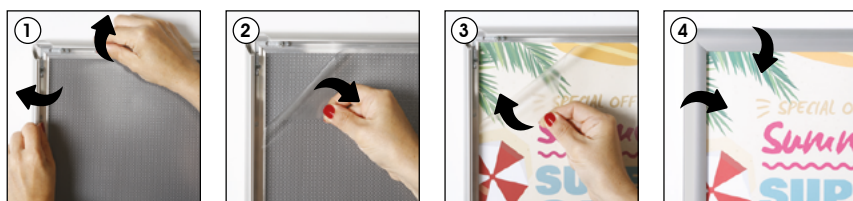
Document Size: 30.4" x 40.4" (Includes Bleeds)  
Finished Size: 30"x40" (762x1016 mm) [Print](#)

### Snap Frame 1" - 40"x60"

Document Size: 40.4" x 60.4" (Includes Bleeds)  
Finished Size: 40"x60" (1016x1524 mm) [Print](#)

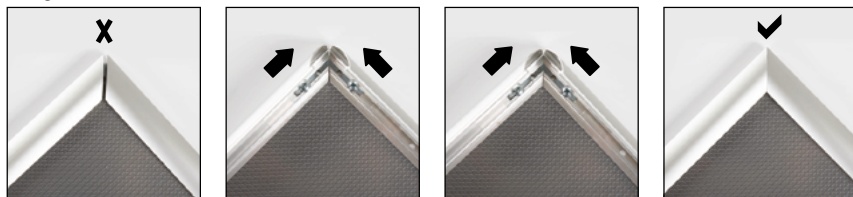
## INSTALLATION INSTRUCTIONS

### Snap Frame 1" / 1001846



Screw & anchor mounting

#### Fixing uneven corners



1. If your frame corners are slightly uneven, there is an easy fixing. Follow these steps with care, as the corners are sharp.

2. Locate the metal brackets on the back of your frame near the gap and loosen the screws. Push the two sides of the frame together and retighten the screws.

3. Your frame corners should be perfectly aligned!



• Please inform the order number on the product or on the carton (e.g. 1/110001394-460) to the place that you have made the purchase if any problem with the product occurs.

• All rights reserved. All pictures, figures and writings are secured internationally by copy-right law. Infringements will be sued by civil and legal law.

This technical sheet's contents are all subject to update and modification at MT Displays' exclusive discretion. There is nothing official about this document. For final and legally binding information, please get in touch with the sales staff at MT Displays.



T: +1 855-478-0652 / [info@mtdisplaysllc.com](mailto:info@mtdisplaysllc.com) / [www.mtdisplaysllc.com](http://www.mtdisplaysllc.com)