

SLIDE-IN SWINGPRO® & WINDPRO®



DOUBLE SIDED PAVEMENT SIGNS WITH PATENT PROTECTION

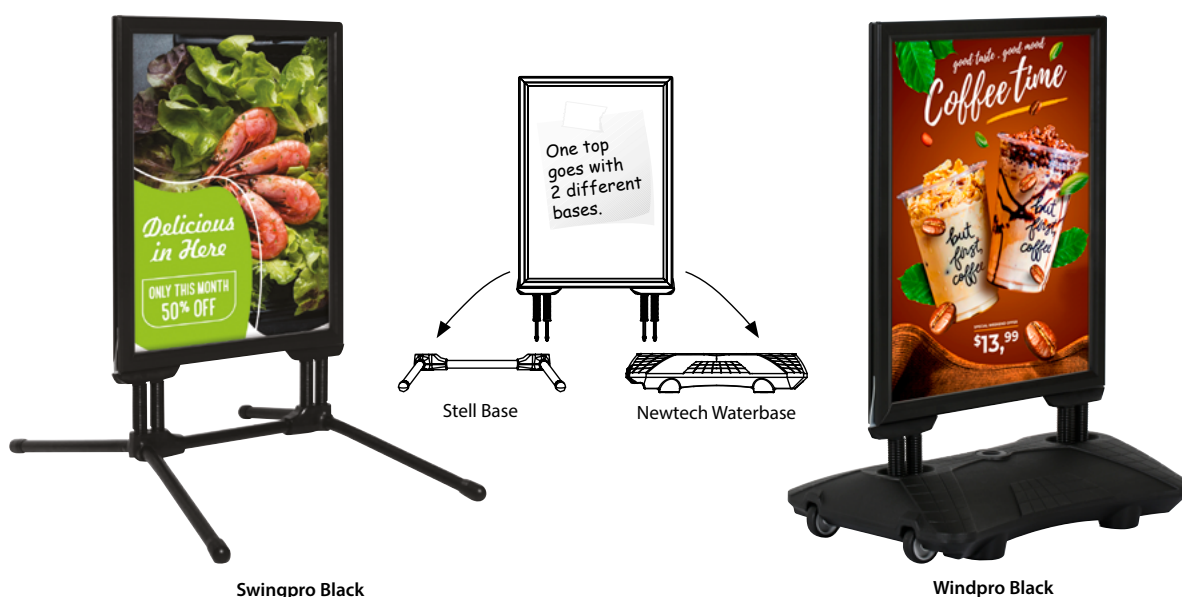
Top opening Slide-in WindPro is a well designed outdoor product. Poster is secured in the lockable frame and stands firm between the cover and backing. Safe corners of the frame complies health and safety regulations. The springs stabilize the poster and frame in outdoor conditions.

KEY SELECTION ATTRIBUTES

- * Double-sided, patent protected (OHIM DM/084 128) Outdoor Pavement Sign with top opening slide-in design and swinging springs in combination with optional heavy long feet or water base for flexibility and stability.
- * Easy to use by sliding posters from top opening profile in between PET covers and PP backing. Top opening profile is lockable for securing the posters.
- * Silver and black colours in standard and various RAL colors available with antimicrobial powder coating.
- * Suitable for poster sizes 22"x28", 24"x36", 27"x40".
- * Standard poster thickness is between 0.0039" to 0.0078". If used without PP backer, maximum poster thickness is 0.15" for low density rigid posters.
- * One set includes double sided top opening slide-in aluminium frame with locking function, bottom profile for easy application of slide-in sandwich panel with 2 anti-reflex PET poster covers and 1 PP backing, swinging springs for stabilizing the frame in outdoor conditions, optional Swingpro Steel Base or

HLDPE Windpro Water Base with wheels and related fixing accessories like allen keys, nuts, spanners, brackets and washers.

- * Use the wrench enclosed and tighten carefully. If tightened too much, the base can breach.
- * Bottom profile of sandwich slide-in panel provide easy application.
- * Water base or heavy long feet on base provide stability.
- * Safe corners of the frame complies health and safety regulations.
- * It is recommend to carry the product with carry tool when the base is full with water. Carry tool is optional, not included in the package, please order separately.
- * Packed in 2 boxes with an easy-to-understand instruction sheet. No tool assembly.

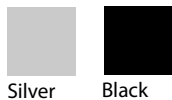


Swingpro Black

Windpro Black



COLOURS IN STOCK



Silver Black

COLOUR OPTIONS

Black Anodised

White - RAL 9003

Red - RAL 3020

Blue - RAL 5002

Green - RAL 6029

SUITABLE FOR

Slide-in Swingpro and Windpro can be used for OUTDOOR applications, for signage needs in many locations like shopping centers, markets, groceries, hotels, offices airports, shops and stores, hospitals, schools, apartments and many more.

WATCH VIDEO



Watch video at our website
www.mtdisplaysllc.com

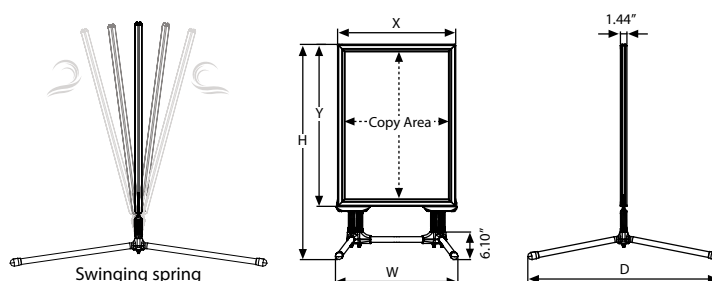
FEATURES



EXPLODED VIEW



TECHNICAL DRAWING



ARTICLES

FRAME					WEIGHT	PACKING SIZE
SILVER	BLACK	EXTERNAL (x-y)	POSTER	COPY	WITH PACKING	*W X H X D
USWS000N22	USWS000B22	24.84" X 30.83"	22" X 28"	21.69" X 27.68"	17.868 lbs	26.77" X 41.34" X 1.85"
USWS000N24	USWS000B24	26.85" X 38.82"	24" X 36"	23.70" X 35.67"	21.142 lbs	29.53" X 50" X 1.85"
USWS000N74	USWS000B74	29.84" X 42.83"	27" X 40"	26.69" X 39.69"	24.890 lbs	32.28" X 52.76" X 1.85"

STEEL BASE						WEIGHT	PACKING SIZE
SILVER	BLACK	FOR	H	W	D	WITH PACKING	*W X H X D
UTSM002000	UTSM002010	22" X 28"	42.64"	27.17"	42.13"	8.818 lbs	8.66" X 46.46" X 1.85"
UTSM002000	UTSM002010	24" X 36"	50.63"	27.17"	42.13"	12.345 lbs	8.66" X 46.46" X 1.85"
UTSM003000	UTSM003010	30" X 40"	54.65"	35.04"	49.61"	10.141 lbs	8.66" X 51.57" X 1.85"

NEWTech WATER BASE						WEIGHT	PACKING SIZE
SILVER	BLACK	FOR	H	W	D	WITH PACKING	*W X H X D
UTWM003000	UTWM003010	22" X 28"	40.47"	28.35"	20.87"	9.876 lbs	21.85" X 29.53" X 7.01"
UTWM003000	UTWM003010	24" X 36"	48.46"	28.35"	20.87"	9.876 lbs	21.85" X 29.53" X 7.01"
UTWM004000	UTWM004010	30" X 40"	52.48"	35.43"	24.80"	15.101 lbs	23.82" X 36.61" X 7.01"

OPTIONAL ACCESSORIES



Optional carry tool.
UYUP480945



T: +1 855-478-0652 / info@mtdisplaysllc.com / www.mtdisplaysllc.com

PHYSICAL DATA

Material

1.57" aluminium profile, PET anti-reflex poster cover, PP backing.

Poster Thickness

Standard poster thickness is between 0.0039" to 0.0078". If used without PP backer, maximum poster thickness is 0.15" for low density rigid posters. Any non-standard poster thicknesses should be indicated with order.

Surface Finish

Natural silver-anodized, or black powder coated in standard and various RAL colors available with antimicrobial powder coating. Call for custom color requests.

Recycled Content

For frame part up to 78% and for base part up to 40% recycled content used.

Warranty

All products are guaranteed for 3 years by MT Displays with below conditions:

[Warranty Conditions](#)

Storage Conditions

Goods should be stored at 32°F to 77°F in a dry place. Store in the original package.

Installation Considerations

Slide-in Swingpro and Windpro Signs are packed in 2 boxes with an easy-to-understand instruction sheet. No tool assembly. One set includes double sided top opening slide-in aluminium frame with locking function, bottom profile for easy application of slide-in sandwich panel with 2 anti-reflex PET poster covers and 1 PP backing, swinging springs for stabilizing the frame in outdoor conditions, optional Swingpro Steel Base or HLDPE Windpro Water Base with wheels and related fixing accessories like allen keys, nuts, spanners, brackets and washers. It is recommend to carry the product with carry tool when the base is full with water. Carry tool is optional, not included in the package, please order separately. Use the wrench enclosed and tighten carefully. If tightened too much, the base can breach.

Design Considerations

Double-sided, patent protected (OHIM DM/084 128) Outdoor Pavement Sign with top opening slide-in design and swinging springs in combination with optional heavy long feet or water base for flexibility and stability. Easy to use by sliding posters from top opening profile in between PET covers and PP backing. Bottom profile of sandwich slide-in panel provide easy application. Top opening profile is lockable for securing the posters. Suitable for poster

sizes 22"x28", 24"x36", 27"x40". Water base or heavy long feet on base provide stability. Safe corners of the frame complies health and safety regulations.

Cleaning and Disinfecting

Clean your displays, with damp microfiber clothes, rinsed with simply water or warm, soapy or gentle shampooed water. Avoid using vinegar, abrasive, acidic, alcohol-based or heavy cleaners or cleaners containing Ammonia. Only after cleaning the product, if needed, simply apply disinfectant or sanitizer that is in compliance with your local guidelines and regulations.

Patent

OHIM DM/098 297, PCT/EP2018/060515

PRINT TEMPLATES

Slide-in SwingPro & WindPro - 22" x 28"

Document Size: 22.4" x 28.4" (Includes Bleeds)

Finished Size: 22" x 28" (558.8 x 711.2 mm) [Print](#)

Slide-in SwingPro & WindPro - 24" x 36"

Document Size: 24.4" x 36.4" (Includes Bleeds)

Finished Size: 24" x 36" (609,6 x 914,4 mm) [Print](#)

Slide-in SwingPro & WindPro - 27" x 40"

Document Size: 27.4" x 40.4" (Includes Bleeds)

Finished Size: 27" x 40" (685.8 x 1016 mm) [Print](#)



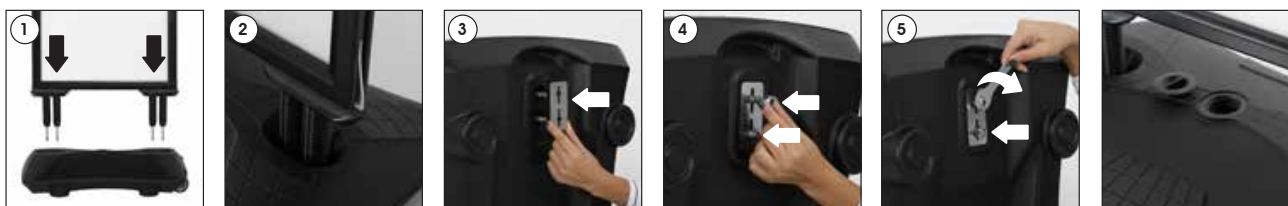
INSTALLATION INSTRUCTIONS

Slide-in SwingPro & WindPro / 1008623

Slide-in SwingPro Steel base

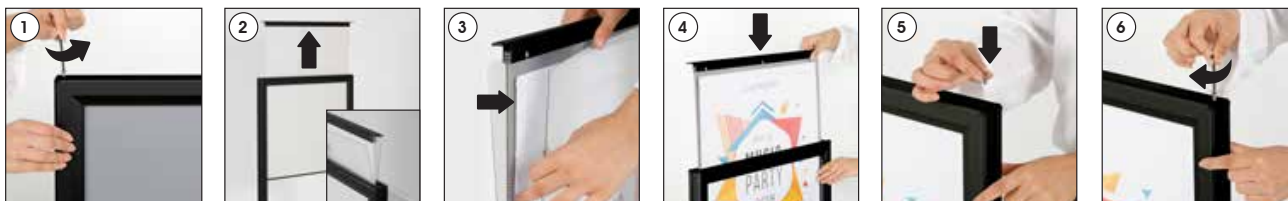


Slide-in WindPro Waterbase



You can fill in the base by water & close the cover cap.

Poster Change



Each product package includes mounting accessories for Frame

- 1 x SwingPro & WindPro Slide-in Frame
- 1 x PP panel
- 2 x PET cover
- 1 x 3 Allen key
- 4 x Nut M10
- 1 x 17 spanner



WARNING !

- Please use the wrench enclosed and tighten carefully. When tighten too much, the base can breach.
- It is recommend to carry the product with the tool as shown (optional available), when the base is full with water.



- Please inform the order number on the product or on the carton (e.g. 1/110001394-460) to the place that you have made the purchase if any problem with the product occurs.
- All rights reserved. All pictures, figures and writings are secured internationally by copy-right law. Infringements will be sued by civil and legal law.

This technical sheet's contents are all subject to update and modification at MT Displays' exclusive discretion. There is nothing official about this document. For final and legally binding information, please get in touch with the sales staff at MT Displays.



T: +1 855-478-0652 / info@mtdisplaysllc.com / www.mtdisplaysllc.com