

SIGN HOLDER



DOUBLE SIDED SIDEWALK SIGNS WITH EASY SLIDING DESIGN

Sign Holder Stand is a perfect advertising solution in a store or reception as a result of double sided frame for back-to-back prints. A dual-sided display helps to maximise your floor space whilst allowing your advertising message to be seen by people around. Constructed with durable parts it is recommended for use in outdoor conditions. It works with a slide-in method and can be used in both horizontal and vertical positions.

The poster is inserted from the short side using this slide-in method. This durable marketing stand makes any product advertisement more attractive and stylish! Each Sign Holder Stand with weighted base to ensure sturdiness and durability in busy environments. It is a good advertising stand for hotels, travel agents, shows offices and even more.

KEY SELECTION ATTRIBUTES

- * 1" double-sided sign holder with a sliding channel design allow for easy poster changes by simply sliding the posters into place from the short side, either from the top or the side, depending on the frame's position.
- * Suitable for public spaces with poster sizes 18" X 24" in both landscape and portrait positions, and 22" X 28" in portrait position only.
- * One set includes an anodised aluminium slide-in frame with 0.75" depth for displaying posters on double sides, 1 poster protective set with 2 anti-reflex PET poster covers and 1 PP backing sheet, 1 anodised aluminium main body post with channels on both sides, 1 oval steel base and 1 additional weight for stability, frame connector, allen keys, washer and bolts for installation.
- * PP backing in the middle of 2 posters prevent light transmission.
- * Natural silver-anodized and black in standard and various RAL colors available with antimicrobial powder coating.
- * The product is packed unassembled in a single box with an easy-to-understand instruction sheet & fixing hardware. Basic tool assembly required.
- * Heavy base with 13.23 lbs weight provides stability.



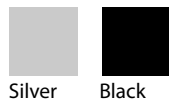
Silver , Portrait



Black, Landscape



COLOURS IN STOCK



Silver Black

COLOUR OPTIONS

Black Anodised

Silver Anodised

Black - RAL 9005

White - RAL 9003

Red- RAL 3020

Blue - RAL 5002

Green - RAL 6029

Yellow - RAL 1021

SUITABLE FOR

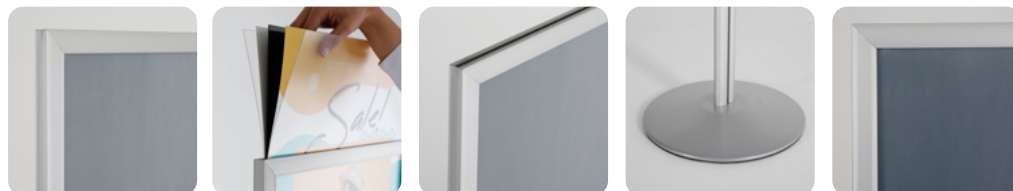
Sign Holder can be used for INDOOR public areas, for signage needs in many locations like shopping centers, markets, groceries, hotels, offices airports, shops and stores, hospitals, schools, apartments, restaurants, halls, meeting rooms, gas stations and many more.

WATCH VIDEO

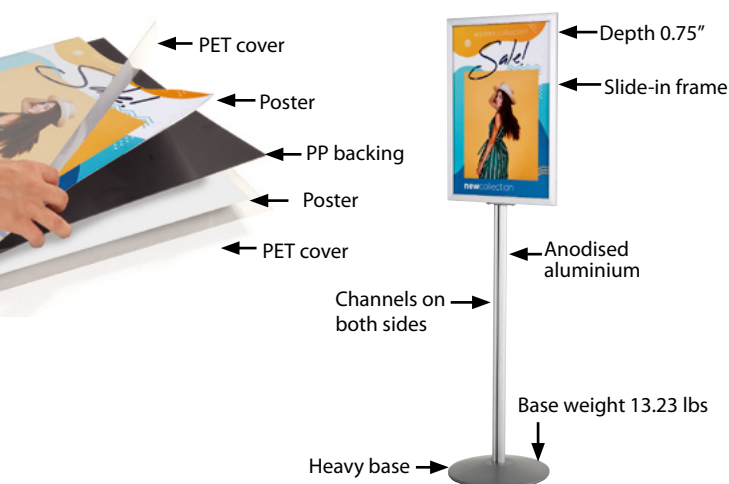


Watch video at our website
www.mtdisplaysllc.com

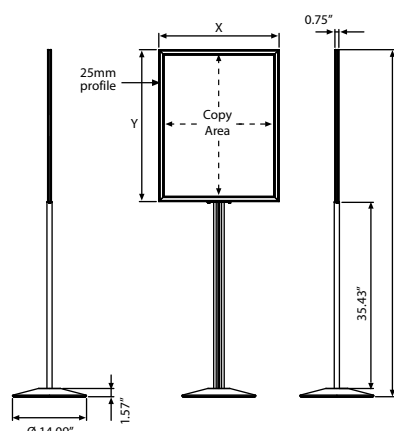
FEATURES



EXPLODED VIEW



TECHNICAL DRAWING



PHYSICAL DATA

Material

Aluminium slide-in profile poster frame and main body, oval steel base and additional weight, PET anti-reflex poster cover and PP backing.

Poster Thickness

0.004" - 0.08" for standard product. Max poster thickness is 0.06" without separator. When used without separator and 2 PET poster protection, max poster thickness is 0.24". Any non-standard poster thickness should be indicated with the order.

Surface Finish

Natural silver-anodized and black in standard and various RAL colors available with antimicrobial powder coating. Call for custom color requests.

Recycled Content

Up to 78% recycled content used.

Warranty

All products are guaranteed for 3 years by MT Displays with below conditions:

[Warranty Conditions](#)

Storage Conditions

Goods should be stored at 32° to 77°F in a dry place. Store in the original package.

Installation Considerations

The Sign Holders are packed unassembled in a single box with an easy-to-understand instruction sheet & fixing hardware. Basic tool assembly required. One set includes an anodised aluminium slide-in frame with 0.75" depth for displaying posters on double sides, 1 poster protective set with 2 anti-reflex PET poster covers and 1 PP backing sheet, 1 anodised aluminium main body post with channels on both sides, 1 oval steel base and 1 additional weight for stability, frame connector, allen keys, washer and bolts for installation.

Design Considerations

Double-sided Sign Holders with sliding channel design for easy poster changing by simply sliding posters in channels from the side or top. Suitable for public spaces with poster sizes 18" X 24" in both landscape and portrait positions, and 22" X 28" in portrait position only. PP backing in the middle of 2 posters prevent light transmission. Heavy base with 13.23 lbs weight provides stability.

Cleaning and Disinfecting

Clean your displays, with damp microfiber clothes, rinsed with simply water or warm, soapy or gentle shampooed water. Avoid using vinegar, abrasive, acidic, alcohol-based or heavy cleaners or cleaners containing Ammonia. Only after cleaning the product, if needed, simply apply disinfectant or sanitizer that is in compliance with your local guidelines and regulations.

Hazardous Substances

M&T Displays prioritizes compliance with the REACH (Registration, Evaluation, Authorisation and Restriction of Chemicals) and RoHS (Restriction of Hazardous Substances) directives to protect both the environment and human health. We ensure that our products do not contain substances listed under REACH and adhere to strict RoHS limits for hazardous materials. Our manufacturing process ensures that lead, mercury, cadmium, and other restricted substances remain within the permitted thresholds, guaranteeing safe and sustainable products for our customers.



T: +1 855-478-0652 / info@mtdisplaysllc.com / www.mtdisplaysllc.com

ARTICLES

ARTICLE	DESCRIPTION	EXTERNAL (x-y)	POSTER	COPY	HEIGHT PORTRAIT	WEIGHT	PACKING SIZE
						WITH PACKING	*W X H X D
UIBSHN0018	Silver	18.9" X 24.9"	18" X 24"	16.9" X 22.9"	62.09"	20.5 lbs	38.39" X 22.44" X 2.05"
UIBSHN0022	Silver	22.9" X 28.9"	22" X 28"	20.9" X 26.9"	66.1"	21.16 lbs	38.39" X 26.38" X 2.05"
UIBSHB0018	Black	18.9" X 24.9"	18" X 24"	16.9" X 22.9"	62.09"	20.5 lbs	38.39" X 22.44" X 2.05"
UIBSHB0022	Black	22.9" X 28.9"	22" X 28"	20.9" X 26.9"	66.1"	21.16 lbs	38.39" X 26.38" X 2.05"

PRINT TEMPLATES

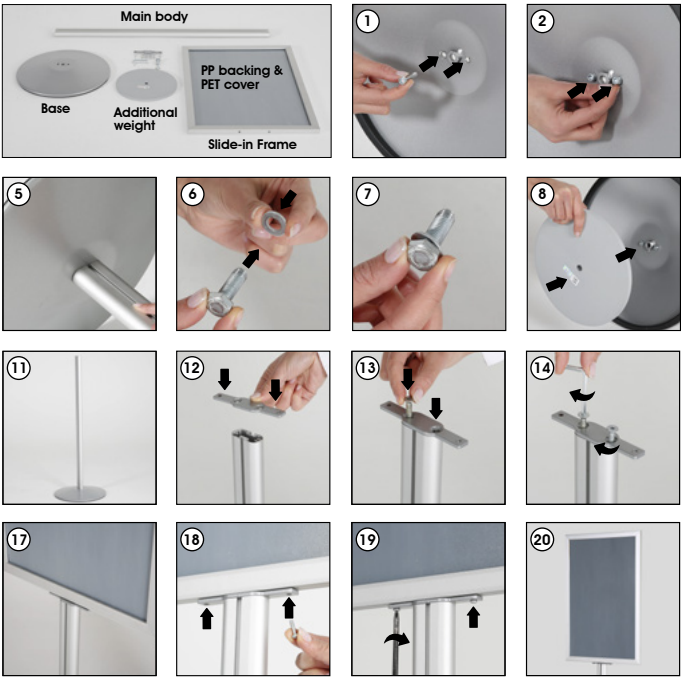
Sign Holder - 18"x24"
Document Size: 18.4"x24.4" (Includes Bleeds)
Finished Size: 18"x24" **Print**

Sign Holder - 22"x28"
Document Size: 22.4"x28.4" (Includes Bleeds)
Finished Size: 22"x28" **Print**

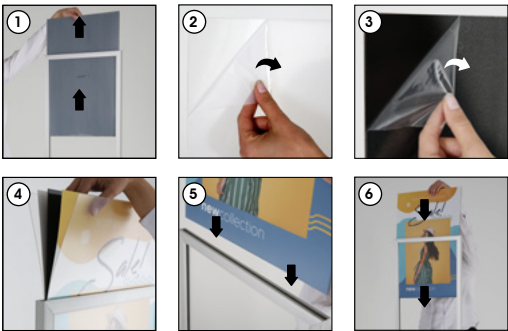
INSTALLATION INSTRUCTIONS

Sign Holder / 1011940H000

- Each product includes**
- 1 x Slide-in Frame
 - 1 x Main body
 - 1 x Base
 - 1 x Additional weight
 - 1 x PP backing
 - 2 x PET cover
 - 1 x Frame connector
 - 1 x 5 Allen key
 - 1 x 4 Allen key
 - 1 x Washer Ø10
 - 1 x Bolt M10x30
 - 2 x Bolt SB M6x25
 - 2 x Bolt HB M6x25
 - 2 x Bolt YSB M4x16



Insert the posters



• Please inform the order number on the product or on the carton (e.g. 1/110001394-460) to the place that you have made the purchase if any problem with the product occurs.
• All rights reserved. All pictures, figures and writings are secured internationally by copy-right law.
Infringements will be sued by civil and legal law.

