

## RESTAURANT BOARDS



### HEAVY DUTY RESTAURANT BOARD FOR YOUR MENUS PROMOTIONS AND NOTES

Heavy duty outdoor Restaurant board is ideal for displaying menus, special offers, events and more. Restaurant Boards are designed smart to cover magnetic tape on the cover with Black silk screen printing. These versatile menuboards are produced with durable steel material to suit outdoor conditions. Steel base covered with soft material to protect the floors. Textured black or Black-Grey finishes offers options to users. It is easy to change the message. It captures the customer's attention in all frequented traffic areas.

### KEY SELECTION ATTRIBUTES

- \* Heavy duty Restaurant Board, made of durable steel material to suit OUTDOOR conditions and highly frequented traffic areas.
- \* Ideal for displaying menus, special offers, events and more.
- \* One set includes a black or hammered black powder coated durable base for providing stability, steel profile legs and a steel restaurant board frame with smart cover with magnetic tape and lock.
- \* Single leg version is adjustable for portrait and landscape positions and it is suitable for 4x8.5" X 11" poster size. Double leg version is suitable for 3x8.5" X 11" poster size.

- \* Easily change messages or prints without using any tools.
- \* Textured black or black-grey powder coated in standard, various RAL colors available with antimicrobial powder coating.
- \* Heavy steel base covered with soft material to protect the floors.
- \* Packed unassembled in a sturdy box.



COLOURS IN STOCK

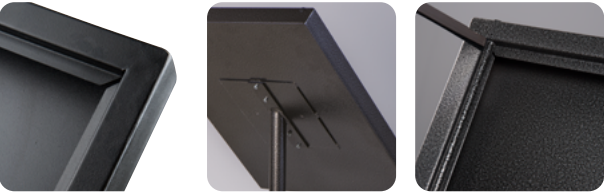


SUITABLE FOR

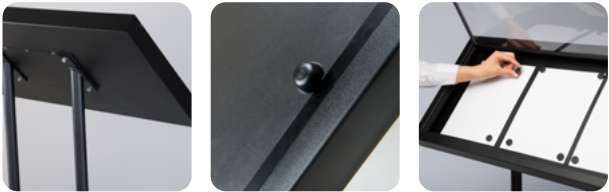
Restaurant Boards can be used for OUTDOOR applications for signage needs in highly frequented traffic areas like restaurants, coffee shops, stores, hotels, shopping centers and many more.

FEATURES

4x8.5" X 11"



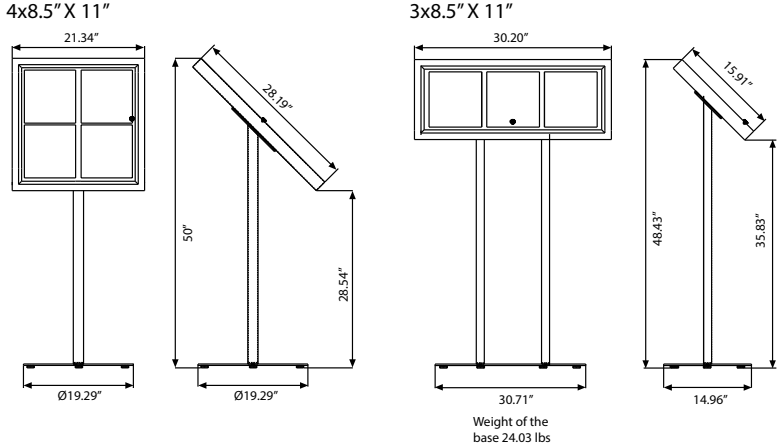
3x8.5" X 11"



EXPLODED VIEW



TECHNICAL DRAWING



ARTICLES

ARTICLE	CAPACITY	DESCRIPTION	HEIGHT
UMB00B04A4	4 X (8.5" X 11")	Black	50" / Portrait
UMB00N04A4	4 X (8.5" X 11")	Hammered Black	47.44" / Landscape

WEIGHT	PACKING SIZE
WITH PACKING	*W X H X D
52.029 lbs	8.66" X 44.09" X 2.76"
	22.83" X 28.35" X 2.76"
	24.02" X 2.76" X 0.31"
52.029 lbs	8.66" X 44.09" X 2.76"
	22.83" X 28.35" X 2.76"
	24.02" X 2.76" X 0.31"

OPTIONAL ACCESSORIES



Optional magnetic buttons.  
Packed in 10. UYUP397000



## PHYSICAL DATA

### Material

Heavy base made of steel, steel profile legs, steel restaurant board frame, poster cover with magnetic tape.

### Poster Material & Thickness

0.0039" – 0.0078" for standard product. Max poster thickness is 0.059". any non-standard poster thicknesses should be indicated with order.

### Surface Finish

Textured black or black-grey powder coated in standard, various RAL colors available with antimicrobial powder coating. Call for custom color requests.

### Recycled Content

Up to 78% recycled content used.

### Warranty

All products are guaranteed for 3 years by MT Displays with below conditions:

[Warranty Conditions](#)

### Installation Considerations

Restaurant Boards are packed unassembled in a sturdy box with an easy-to-understand instruction sheet & fixing elements. One set includes a black or hammered black powder coated durable base for providing stability, steel profile legs and a steel restaurant board frame with smart cover with magnetic tape and lock. 3 packs. See info chart for pack sizes.

### Storage Conditions

Goods should be stored at 32°F to 77°F in a dry place. Store in the original package.

### Design Considerations

Verstaile design for outdoor & heavy duty applications in highly frequented traffic areas. Single leg version is adjustable for portrait and landscape positions and it is suitable for 4x8.5" X 11" poster size. Double leg version is suitable for 3x8.5" X 11" poster size. Easily change messages or prints without using any tools. Heavy steel base covered with soft material to protect the floors. Heavy base provides stability.

### Cleaning and Disinfecting

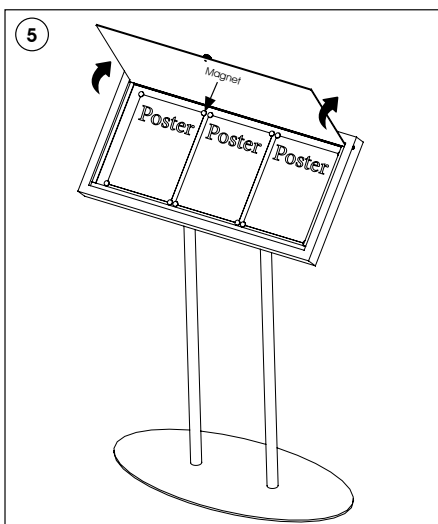
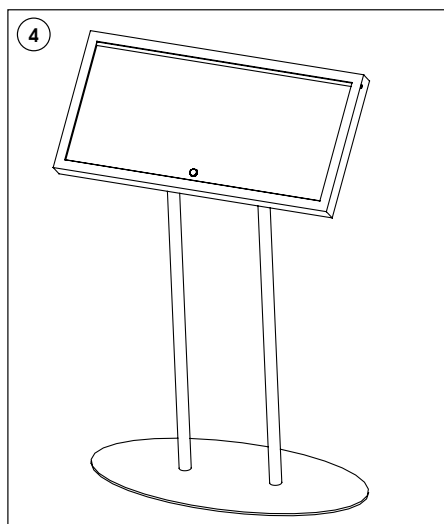
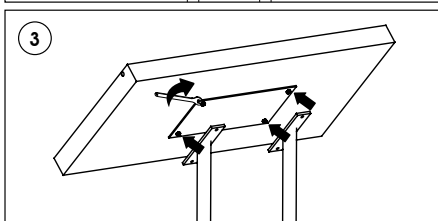
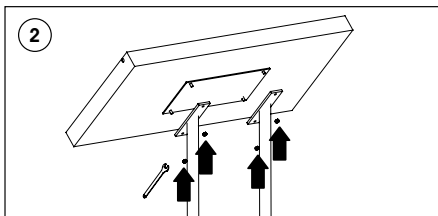
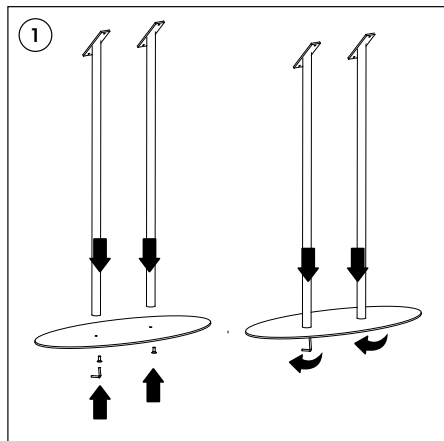
Clean your displays, with damp microfiber clothes, rinsed with simply water or warm, soapy or gentle shampooed water. Avoid using vinegar, abrasive, acidic, alcohol-based or heavy cleaners or cleaners containing Ammonia. Only after cleaning the product, if needed, simply apply disinfectant or sanitizer that is in compliance with your local guidelines and regulations.

## INSTALLATION INSTRUCTIONS

### Restaurant Boards 3x8.5" X 11" / 1008753

#### Each product package includes

- |                              |                      |                   |
|------------------------------|----------------------|-------------------|
| • 1 x Restaurant board frame | • 2 x Main body pipe | • 1 x 5 Allen key |
| • 1 x Base                   | • 2 x Bolt M8x20 mm  | • 1 x Spanner 10  |
|                              | • 4 x Nut M6         |                   |



- Please inform the order number on the product or on the carton (e.g. 1/110001394-460) to the place that you have made the purchase if any problem with the product occurs.
- All rights reserved. All pictures, figures and writings are secured internationally by copy-right law. Infringements will be sued by civil and legal law.

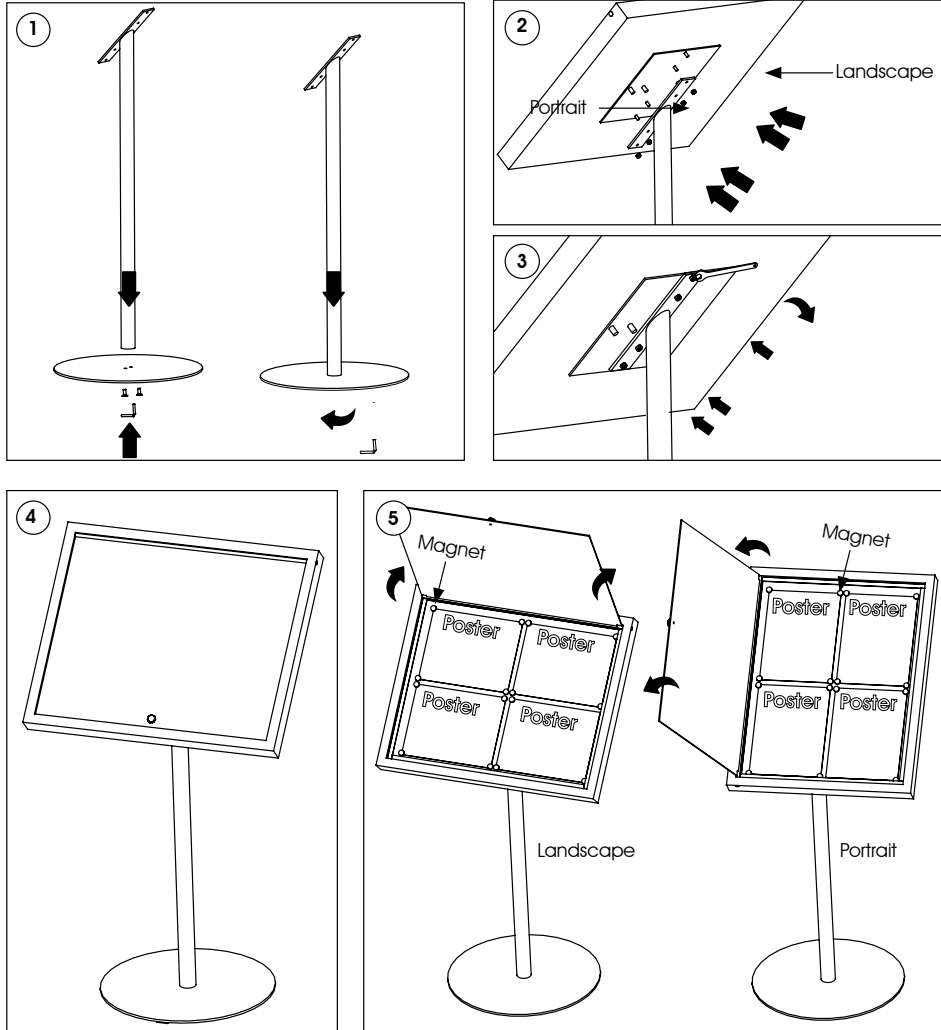


# INSTALLATION INSTRUCTIONS

## Restaurant Boards 4A4 / 1008754

### Each product package includes

- 1 x Restaurant board frame
- 1 x Base
- 1 x Main body pipe
- 2 x Bolt M8x20 mm
- 4 x Nut M6
- 1 x 5 Allen key
- 1 x Spanner 10



- Please inform the order number on the product or on the carton (e.g. 1/110001394-460) to the place that you have made the purchase if any problem with the product occurs.
- All rights reserved. All pictures, figures and writings are secured internationally by copy-right law. Infringements will be sued by civil and legal law.

This technical sheet's contents are all subject to update and modification at MT Displays' exclusive discretion. There is nothing official about this document. For final and legally binding information, please get in touch with the sales staff at MT Displays.



T: +1 855-478-0652 / [info@mtdisplaysllc.com](mailto:info@mtdisplaysllc.com) / [www.mtdisplaysllc.com](http://www.mtdisplaysllc.com)