

POWER MAXI LED

MAXI
frame



FRAMELESS LOOKING AD SIGNS FOR BIG FABRIC POSTERS!

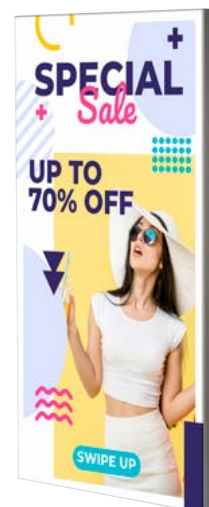
The Power Maxi LED is a modern way of advertising with its slim 100mm profile, single or double sided. It is suitable for textile printed graphics. Practical poster application with clear tape provides smooth look. Completed with a ceiling suspension system, the Power Maxi LED is a special advertising solution when it comes to display advertising or messages. All units pass CE/UL Pat test and packed with quality certificates.

KEY SELECTION ATTRIBUTES

- * A very modern and slim design, single-sided, wall hanging, edge-lit Maxi Frame system, combining long lasting LED technology bulbs, aluminium profiles and sewed or nylon strip for application of printed fabric posters.
- * One of the most attractive frame designs in the market with frameless look when viewed from the front side.
- * LED bulbs are not seen from outside, since they are embedded in sides of the frame.
- * Maxi Frames with LED can be ordered in standard sizes. They can also be ordered in special lengths and parts as semi products.
- * Supplied with quality certificates and CE/UL PAT test reports passed.
- * Natural silver-anodized in standard and various RAL colors available with antimicrobial powder coating. Subject to MOQ.
- * One set includes single sided aluminium profile frame with 3.94" depth and embedded LED bulbs; 1.42" x 0.75" aluminium H-profile for 39.37" and more wider poster sizes; 0.12" clear nylon strips; connectors, cleats, nuts, bolts and allen key for installation; 1 power supply with cable and 1 EU Plug. UK and US plugs are available, should be specified with order. All electrical components are CE listed.
- * Fabric is not included in the original pack.
- * Recommended fabric thickness for digital printing is 0.02". Thickness of the profile is 0.16". Thickness of nylon strip is 0.12". The pull sticker in 0.02" thickness must be sewed on the fabric for taking out the poster when fitted into the channels.
- * 0.51" on each side of the fabric into Maxi Profiles, so 1.02" on each Fabric Poster is not seen on the poster. Please arrange accordingly.
- * Profiles and connector parts for the required sizes are packed unassembled in a single box with an easy mounting instruction sheet. For larger sizes of Power Maxi LED, H-Profile must be used for stability. Fixing tools are included in each frame.
- * Products are suitable to use 7/16. For using the LED frame for 24 hours a day and 7 days a week, please ask for special 7/24 power supplies.



One product,
two positions
(landscape&portrait)



COLOURS IN STOCK



Silver

SUITABLE FOR

Power Maxi LED can be used for INDOOR applications, for signage needs in many locations like shopping centers, markets, groceries, hotels, offices airports, shops and stores, hospitals, schools, apartments, banks, car dealers, restaurants, telecom companies, insurance companies, libraries, museums, travel agencies and many more.

WATCH VIDEO

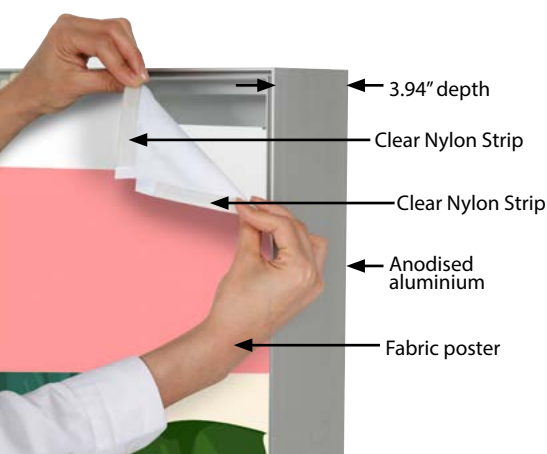


Watch video at our website
www.mtdisplaysllc.com

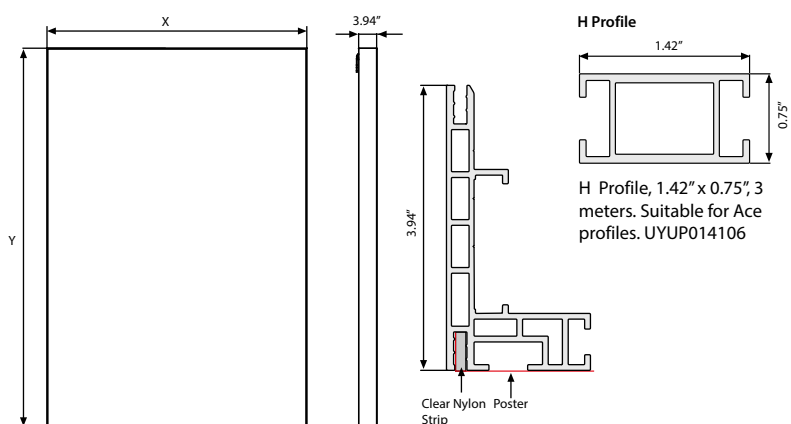
FEATURES



EXPLODED VIEW



TECHNICAL DRAWING



Application of nylon strip by sew-on process



Application of nylon strip by double sided tape



ARTICLES

ARTICLE	EXTERNAL (x-y)	LIGHTING
UMPLTN4060	40" X 60"	1900-2300 LUX
UMPLTN6040	60" X 40"	1900-2300 LUX
UMPLTN8790	87" X 90"	1800-2100 LUX
UMPLTN1090	100" X 90"	2000-2300 LUX
UMPLTN1290	120" X 90"	2000-2300 LUX
UMPLTN1890	118" X 90"	2000-2300 LUX

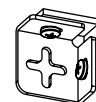
MAXIMUM SIZE: 98.43" X 236.22"



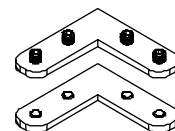
Flat Connector for Maxi Frame with LED profile.
Packed in 10. UYUP412320



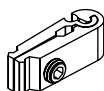
Flat Connector for Maxi Frame with LED profile.
Packed in 10. UYUP412330



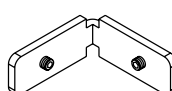
Square Corner Connector for Power LED. Packed by 10. UYUP412270



Corner Cleat for Maxi Frame with LED.
Packed by 8. UYUP412295



Straight Cleat for H profile. Packed by 8. UYUP412291



Straight Cleat for H profile. Packed by 8. UYUP412310



Clear Nylon Strip 13 x 3 mm, 100 meters. UYUP460235



Clear Nylon Strip with tape 0.51" x 0.12", 50 meters. UYUP460220



Red&black electrical cable 19.69" x 98.43"



Power Supplies 90W-160W.



Led Modules 3-S5 LED



T: +1 855-478-0652 / info@mtdisplaysllc.com / www.mtdisplaysllc.com

PHYSICAL DATA

Material

Aluminium profile frame with 3.94" depth, 36x19mm aluminium H-profile, clear nylon strips, metal connectors, LED bulbs.

Surface Finish

Natural silver-anodized in standard and various RAL colors available with antimicrobial powder coating. Subject to MOQ. Call for custom color requests.

Storage Conditions

Goods should be stored at 32°F to 77°F in a dry place. Store in the original package.

Recycled Content

Up to 78% recycled content used.

Warranty

All products are guaranteed for 2 years by MT Displays with below conditions:

[Warranty Conditions](#)

Poster Material & Thickness

Recommended fabric thickness for digital printing is 0.02". Thickness of the channel is 0.16". Thickness of nylon strip is 0.12". The pull sticker in 0.5mm thickness must be sewed on the fabric to take out the poster from channels.

Installation Considerations

Profiles and connector parts of Power Maxi LED for the required sizes are packed unassembled in a single box with an easy mounting instruction sheet. For larger sizes of Power Maxi LED, H-Profile must be used for stability. Fixing tools are included in each frame. Supplied with quality certificates and CE/UL PAT test reports passed. One set includes single sided aluminium profile frame with 3.94" depth and embedded LED bulbs; 1.42" x 0.75" aluminium H-profile for 39.37" and more wider poster sizes; 0.12" clear nylon strips; connectors, cleats, nuts, bolts and allen key for installation; 1 power supply with cable and 1 EU Plug. UK and US plugs are available, should be specified with order. All electrical components are CE listed. Products are suitable to use 7/16. For using the LED frame for 24 hours a day and 7 days a week, please ask for special 7/24 power supplies. Fabric is not included in the original pack. 0.51" on each side of the fabric into Maxi Profiles, so 1.02" on each Fabric Poster is not seen on the poster. These values might vary according to the fabric used. Maxi Frames with LED can be ordered in standard sizes. They can also be ordered in special lengths and parts as semi products.

Design Considerations

A very modern and slim design, single-sided, wall hanging, edge-lit Maxi Frame system, combining long lasting LED technology bulbs, aluminium profiles and sewed or nylon strip for application of printed fabric posters. One of the most attractive frame designs in the market with frameless look when viewed from the front side. LED bulbs are not seen from outside, since they are embedded in sides of the frame. Suitable for INDOOR applications with 60" X 40", 87" X 90", 100" X 90", 120" X 90", 118" X 90" poster sizes in portrait and landscape position.

Cleaning and Disinfecting

Clean your displays, with damp microfiber clothes, rinsed with simply water or warm, soapy or gentle shampooed water. Avoid using vinegar, abrasive, acidic, alcohol-based or heavy cleaners or cleaners containing Ammonia. Only after cleaning the product, if needed, simply apply disinfectant or sanitizer that is in compliance with your local guidelines and regulations.

Cleaning and Disinfecting

CE/UL Patent approved.

PRINT TEMPLATES

Power Maxi LED - 40" x 60"

Document Size: 42.36" x 62.36" (Includes Bleeds)

Finished Size: 40" x 60"

Power Maxi LED - 60" x 40"

Document Size: 62.36" x 42.36" (Includes Bleeds)

Finished Size: 60" x 40"

Power Maxi LED - 87" x 90"

Document Size: 89.36" x 92.36" (Includes Bleeds)

Finished Size: 87" x 90"

Power Maxi LED - 100" x 90"

Document Size: 102.36" x 92.36" (Includes Bleeds)

Finished Size: 100" x 90"

Power Maxi LED - 120" x 90"

Document Size: 122.36" x 92.36" (Includes Bleeds)

Finished Size: 120" x 90"

Power Maxi LED - 118" x 90"

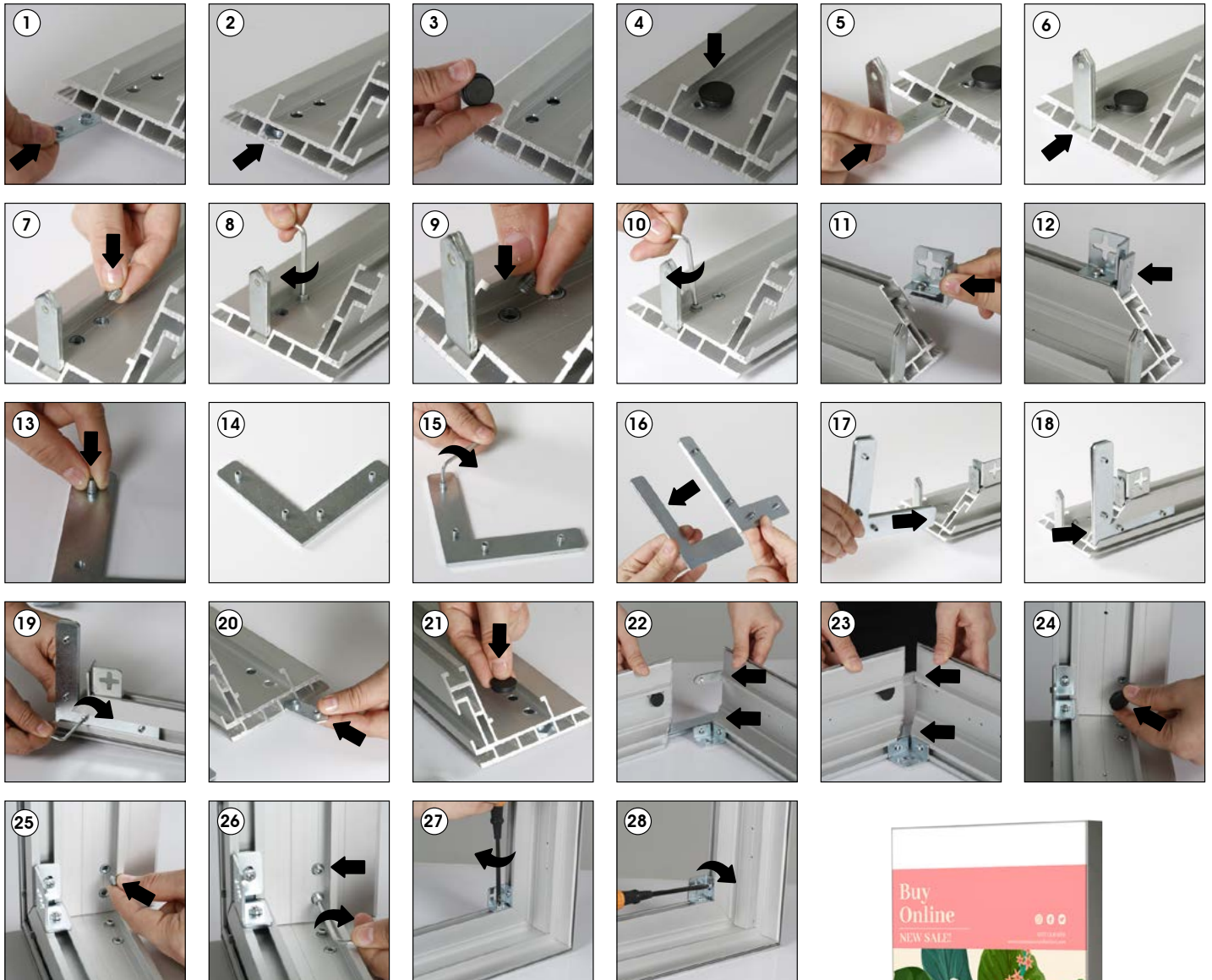
Document Size: 120.36" x 92.36" (Includes Bleeds)

Finished Size: 118" x 90"

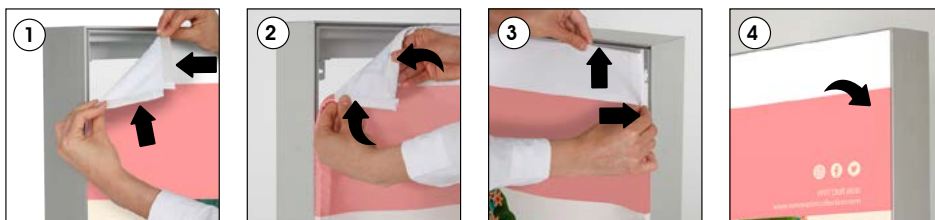


INSTALLATION INSTRUCTIONS

Power LED



Attaching a fabric poster



• Please inform the order number on the product or on the carton (e.g. 1/110001394-460) to the place that you have made the purchase if any problem with the product occurs.
• All rights reserved. All pictures, figures and writings are secured internationally by copy-right law. Infringements will be sued by civil and legal law.

This technical sheet's contents are all subject to update and modification at MT Displays' exclusive discretion. There is nothing official about this document. For final and legally binding information, please get in touch with the sales staff at MT Displays.



T: +1 855-478-0652 / info@mtdisplaysllc.com / www.mtdisplaysllc.com