

POSTER TRAP



RIGID BANNER STANDS FOR CHANGING POSTERS FREQUENTLY IN BUSY AREAS

This poster board display is a sign holder designed to create an elegant and effective ad space for indoor uses. The system is mainly based on screwing the 2 pieces of the bases to each other to stand the poster still. It is suitable using with double sided printed boards and allows adjusting thickness of poster. The maximum recommended height of poster is 59". Base is double sided printable. Suitable for all indoor areas such as schools, seminars, restaurant chains, showrooms, exhibition areas, malls and outdoor conditionally.

KEY SELECTION ATTRIBUTES

- * High quality Poster Trap for holding rigid boards with an elegant and effective base design.
- * Made of threaded steel, highly stable and durable for use in busy commercial environments.
- * Designed to hold rigid boards such as PVC foam, aluminum signboards and acrylic boards to create effective advertisement space for indoor use.
- * One set includes the powder coated steel base with 3 sets of adjustable thickness nuts&bolts.
- * Packed and sold as poster trap without any poster. Offered without custom graphics.
- * Poster boards can be changed by loosening the nuts under the steel base, sandwiching the new one and then fixing it by nuts again.
- * Produced in a variety of sizes 11.81" to 39.3" to make sure that your graphics are noticed in any environment; bigger sizes are ideal for making your advertisements noticed in foot traffic.
- * The holes on the plate should be Ø 0.35".
- * RAL9006 grey coated in standard and various RAL colors available with antimicrobial powder coating. Call for custom color requests.
- * Poster thickness is adjustable.
- * Maximum recommended thickness of the poster is 0.78".
- * Maximum height of the poster is 59".
- * Base is available for double sided printing.
- * Packed with an easy-to-understand instruction sheet.



Silver



Black



COLOURS IN STOCK



Silver

COLOUR OPTIONS

White - RAL 9003

Black - RAL 9005

Red - RAL 3020

Blue - RAL 5002

Green - RAL 6029

Yellow - RAL 1021

SUITABLE FOR

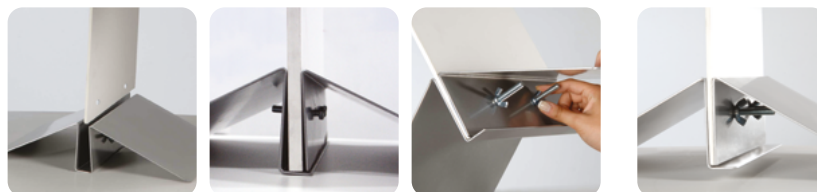
Poster Traps can be used for INDOOR applications and conditionally for outdoor, for signage needs in many locations like shopping centers, markets, groceries, hotels, offices airports, shops and stores, hospitals, schools, banks, car dealers, restaurants, telecom companies, insurance companies, libraries, museums, travel agencies and many more.

WATCH VIDEO

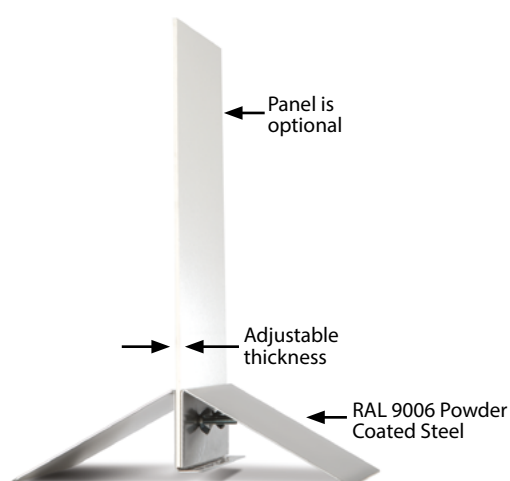


Watch video at our website
www.mtdisplaysllc.com

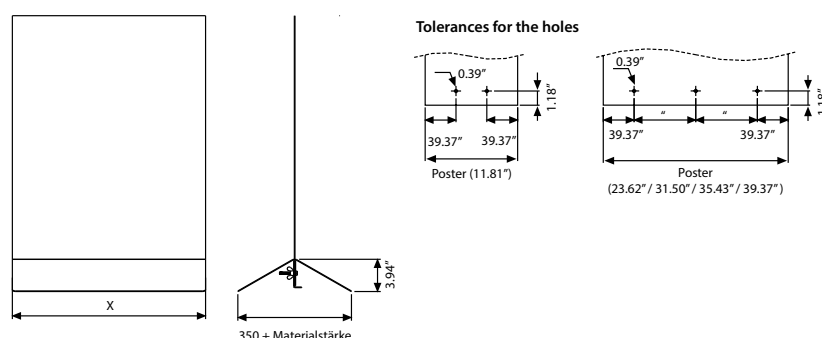
FEATURES



EXPLODED VIEW



TECHNICAL DRAWING



ARTICLES

ARTICLE	EXTERNAL (x)	POSTER	WEIGHT	PACKING SIZE
			WITH PACKING	*W X H X D
UMS0000300	11.81"	11.81"	7.627 lbs	8.07" X 12.99" X 4.61"
UMS0000600	23.62"	23.62"	13.778 lbs	8.07" X 24.80" X 4.61"
UMS0000800	31.50"	31.50"	17.857 lbs	8.07" X 32.68" X 4.61"
UMS0000900	35.43"	35.43"	20.502 lbs	8.07" X 36.61" X 4.61"
UMS0001000	39.37"	39.37"	22.928 lbs	8.07" X 40.55" X 4.61"

PHYSICAL DATA

Material

High quality threaded steel base.

Poster Material & Thickness

Designed to hold rigid boards such as PVC foam, aluminum signboards and acrylic boards. Poster thickness is adjustable by screwing. Maximum thickness of the poster is 0.78.

Surface Finish

RAL9006 grey coated in standard and various RAL colors available with antimicrobial powder coating. Call for custom color requests.

Recycled Content

Up to 60% recycled content used.

Warranty

All products are guaranteed for 3 years by MT Displays with below conditions:
[Warranty Conditions](#)

Installation Considerations

Packed with an easy-to-understand instruction sheet. One set includes the powder coated steel base with 3 sets of adjustable thickness nuts&bolts. Packed and sold as poster trap without any poster. Offered without custom graphics. Poster boards can be changed by loosening the nuts under the steel base, sandwiching the new one and then fixing it by nuts again. The holes on the plate should be Ø 0.35".

Storage Conditions

Goods should be stored at 32°F to 77°F in a dry place. Store in the original package.

Design Considerations

High quality Poster Trap for holding rigid boards with an elegant and effective base design. Made of threaded steel, highly stable and durable for use in busy commercial environments. Designed to hold rigid boards to create effective advertisement space for indoor use. Produced in a variety of sizes 11.81" to 39.37" to make sure that your graphics are noticed in any environment; bigger sizes are ideal for making your advertisements noticed in foot traffic. Maximum height of the poster is 59" Base is available for double sided printing. Max. letter height is 0.7'.

Cleaning and Disinfecting

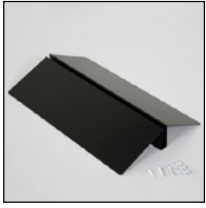
Clean your displays, with damp microfiber clothes, rinsed with simply water or warm, soapy or gentle shampooed water. Avoid using vinegar, abrasive, acidic, alcohol-based or heavy cleaners or cleaners containing Ammonia. Only after cleaning the product, if needed, simply apply disinfectant or sanitizer that is in compliance with your local guidelines and regulations.



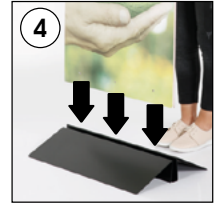
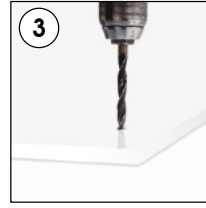
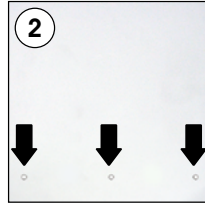
T: +1 855-478-0652 / info@mtdisplaysllc.com / www.mtdisplaysllc.com

INSTALLATION INSTRUCTIONS

Poster Trap / 1004756



Each product includes mounting accessories (3 nuts & 3 bolts)



•Please inform the order number on the product or on the carton (e.g. 1/110001394-460) to the place that you have made the purchase if any problem with the product occurs.
•All rights reserved. All pictures, figures and writings are secured internationally by copy-right law. Infringements will be sued by civil and legal law.



This technical sheet's contents are all subject to update and modification at MT Displays' exclusive discretion. There is nothing official about this document. For final and legally binding information, please get in touch with the sales staff at MT Displays.



T: +1 855-478-0652 / info@mtdisplaysllc.com / www.mtdisplaysllc.com