

PETS REFRESHING CORNER WITH WEATHERPROOF FRAME



FEEDING SMALL PETS WITH A FRIENDLY SOLUTION

Pets Refreshing Corner With Weatherproof Frame is ideal for small-sized animals. It is easy to change poster with its click clack snap open working principle. It is equipped with anti-glare poster cover sheet. Frame has natural silver or black anodized aluminium options. RAL colour options are available as well. Black rubber wick at the bottom prevents sliding. Suitable for feeding dogs, cats and other small pets. PETS Refreshing Corner offers you a perfect solution for pet-friendly facility like restaurants, hotels and shopping centres. It creates a friendly atmosphere to your advertisement for your retail business. You can make your advertisement while our friends are feeding themselves.

KEY SELECTION ATTRIBUTES

- * PETS Refreshing Corner with weatherproof and easy-to-open snap frame design for feeding dogs, cats and other small-sized animals.
- * Creating a pet friendly atmosphere in front of commercial places like restaurants, hotels and shopping centres, while making advertisement of their retail business.
- * Ergonomic design of the base with safe materials and proper dimensions so that pet friends can effortlessly access to food and water.
- * Suitable for use under rainy OUTDOOR conditions with 23.386"x33.11" poster size.
- * Weatherproof IP55 Frame: When poster is placed inside the water wick, it is protected.
- * One set includes a sheet metal base with 4.33" height, 2 stainless steel water bowls with 7.57 gal capacity, a single sided 1" aluminium profile snap open frame with sealing and water drainage slots on bottom profile, UV-resistant and anti-reflex PET poster cover, PS backing, black rubber wick at the bottom for preventing sliding and protecting the ground from scratching, 2 frame connectors, 8 bolts and 1 allen key for installation.
- * Max length is 86.61" and max perimeter is 251.97".
- * Natural silver-anodised or black-anodised in standard and various RAL colors available with antimicrobial powder coating.
- * Packed unassembled in 2 boxes with an easy to understand instruction sheet. Easy to assemble and simple to carry. Assembly in 75 seconds.



Silver



Black



COLOURS IN STOCK



Silver

COLOUR OPTIONS

Black Anodised

White - RAL 9003

Red - RAL 3020

Green - RAL 6029

Silver Anodised

Black - RAL 9005

Blue - RAL 5002

Yellow - RAL 1021

SUITABLE FOR

Pet Refreshing Corners can be used for INDOOR and OUTDOOR applications, in many locations like shopping centers, markets, groceries, hotels, offices airports, shops and stores, hospitals, schools, apartments and many more.

WATCH VIDEO



Watch video at our website
www.mtdisplaysllc.com

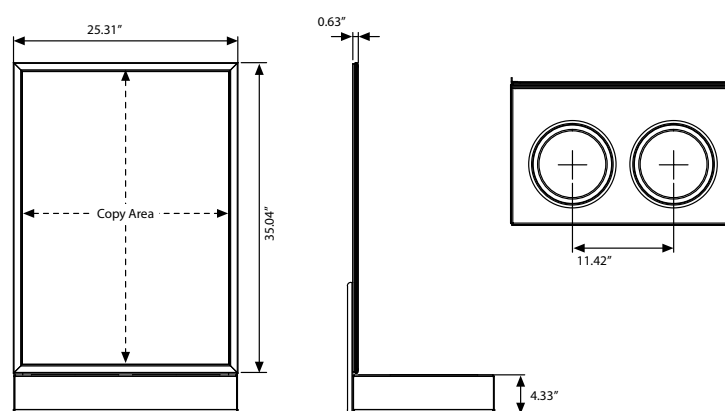
FEATURES



EXPLODED VIEW



TECHNICAL DRAWING



ARTICLES

ARTICLE	EXTERNAL (x-y)	POSTER	COPY	DESCRIPTION	WEIGHT	PACKING SIZE
					WITH PACKING	*W X H X D
UOPRN100A1	25.315" X 35.04"	23.386" X 33.11"	23.31" X 33.03"	Silver	23.37 lbs	17.72" X 26.38" X 4.92" / 26.38" X 40.55" X 2.17"
UOPRB100A1	25.315" X 35.04"	23.386" X 33.11"	23.31" X 33.03"	Black	23.37 lbs	17.72" X 26.38" X 4.92" / 26.38" X 40.55" X 2.17"

PHYSICAL DATA

Material

Sheet metal base, 1" aluminium profile click clack snap open frame, UV-resistant and anti-reflex PET poster cover, PS backing, black rubber wick, stainless steel water bowls.

Poster Material & Thickness

0.004" – 0.01" with gasket/water wick for standard product. Max. poster thickness is 0.08" for low density rigid posters such as PVC foam, PP, etc. Any non-standard poster thickness should be indicated with order.

Surface Finish

Natural silver-anodised or black-anodised in standard and various RAL colors available with antimicrobial powder coating. Call for custom color requests.

Recycled Content

Up to 78% recycled content used.

Warranty

All products are guaranteed for 3 years by MT Displays with below conditions:

[Warranty Conditions](#)

Storage Conditions

Goods should be stored at 32° to 77°F in a dry place. Store in the original package.

Installation Considerations

Packed unassembled in 2 boxes with an easy to understand instruction sheet. Easy to assemble and simple to carry. Assembly in 75 seconds. One set includes a sheet metal base with 4.33" height, 2 stainless steel water bowls with 7.57 gal capacity, a single sided 1" aluminium profile snap open frame with sealing and water drainage slots on bottom profile, UV-resistant and anti-reflex PET poster cover, PS backing, black rubber wick at the bottom for preventing sliding and protecting the ground from scratching, 2 frame connectors, 8 bolts and 1 allen key for installation. Max length is 86.61" and max perimeter is 251.97".

Design Considerations

PETS Refreshing Corner with weatherproof and easy-to-open snap frame design for feeding dogs, cats and other small-sized animals. Creating a pet friendly atmosphere in front of commercial places like restaurants, hotels and shopping centres, while making advertisement of their retail business. Ergonomic design of the base with safe materials and proper dimensions so that pet friends can effortlessly access to food and water. Suitable for use under rainy OUTDOOR conditions with 23.386"x33.11" poster size. Weatherproof IP55 Frame: When poster is placed inside the water wick, it is protected.

Cleaning and Disinfecting

Clean your displays, with damp microfiber clothes, rinsed with simply water or warm, soapy or gentle shampooed water. Avoid using vinegar, abrasive, acidic, alcohol-based or heavy cleaners or cleaners containing Ammonia. Only after cleaning the product, if needed, simply apply disinfectant or sanitizer that is in compliance with your local guidelines and regulations.



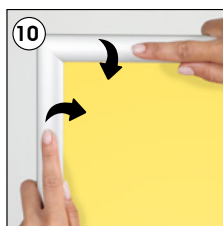
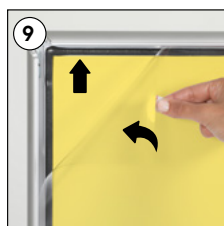
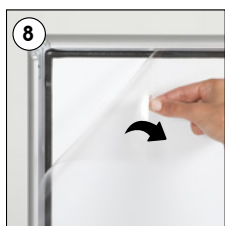
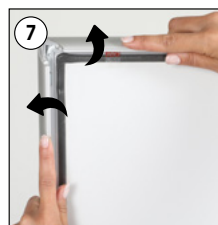
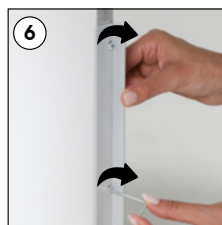
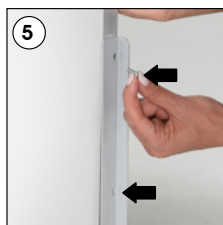
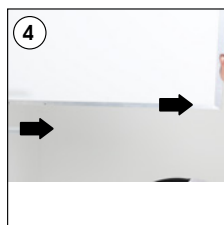
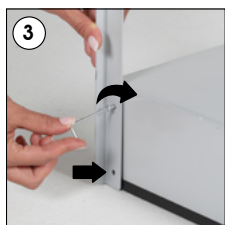
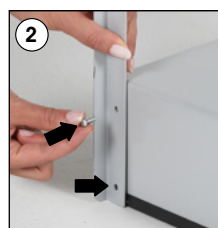
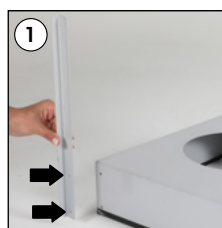
T: +1 855-478-0652 / info@mtdisplaysllc.com / www.mtdisplaysllc.com

INSTALLATION INSTRUCTIONS

Pet Refreshing Corner with Weatherproof Frame / 1012748H000

Each product includes

- 1 x Weatherproof Frame
- 1 x Base
- 2 x Water Bowl
- 2 x Frame connector
- 8 x Bolt M4x12
- 1 x 3 Allen key



- Please inform the order number on the product or on the carton (e.g. 1/110001394-460) to the place that you have made the purchase if any problem with the product occurs.
- All rights reserved. All pictures, figures and writings are secured internationally by copy-right law. Infringements will be sued by civil and legal law.

This technical sheet's contents are all subject to update and modification at MT Displays' exclusive discretion. There is nothing official about this document. For final and legally binding information, please get in touch with the sales staff at MT Displays.



T: +1 855-478-0652 / info@mtdisplaysllc.com / www.mtdisplaysllc.com