

OPTI FRAME 1"

**Opti[®]
Frame**
www.opti-frame.com



OPTIMISED USE! SMART AND ADVANCED DESIGN

Opti Frame is a new snap frame display product that brings a new dimension to retail display snap frames. This innovative and patent protected snap frame product is manufactured exclusively by M&T Displays. Our R&D team has focused their extensive knowledge on transforming production processes to create a completely new type of front-loading snap frame. Opti-Frame not only delivers multi functional applications with a variety of mounting options, but is specifically engineered to offer very competitive pricing in response to the demands of the competitive snap frame market. With four hinged sides, all you need to do is snap open the side profiles, place your insert then the PET protection and snap shut. Only takes less than a minute. PET protection foil keeps your insert from dirt and dust as well as getting damaged.

KEY SELECTION ATTRIBUTES

- 1" / 45° - Round
- Mitred and round corner options are available.
- Ecologically friendly and low-cost.
- Ideal for various poster sizes.
- The front profiles are natural silver-anodized, or wood effect finish, various RAL colors available with antimicrobial powder coating.

- Gray color or wooden color backing and counter support.
- The product is protected in world by all required patent applications.
- Anti-glare poster cover sheet.
- Landscape and portrait use in same/one unit
- Wall mount or counter-top standing



Silver Anodised, Mitred Corner



Silver Anodised, Round Corner



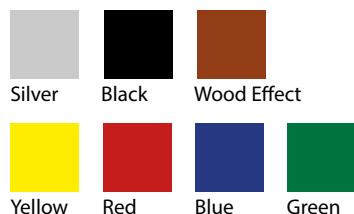
Wood Effect, Mitred Corner



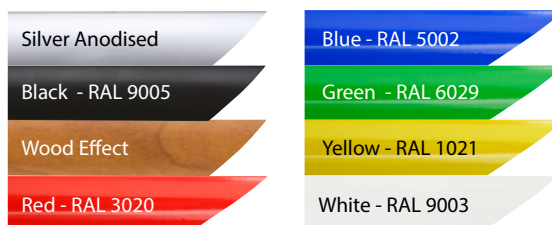
Black - RAL 9005, Mitred Corner



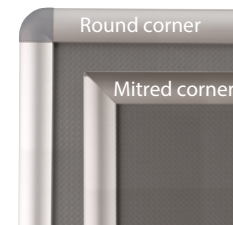
COLOURS IN STOCK



COLOUR OPTIONS



CORNER TYPES



PROFILE OPTIONS FULL FAMILY

Poster Size	0.55" Profile Safety	1" Profile Safety	Counter Support
5"X7"	✓	X	✓
8"X10"	✓	X	✓
8.5"X11"	X	✓	✓
11"X17"	X	✓	X
22"X28"	X	✓	X

SUITABLE FOR

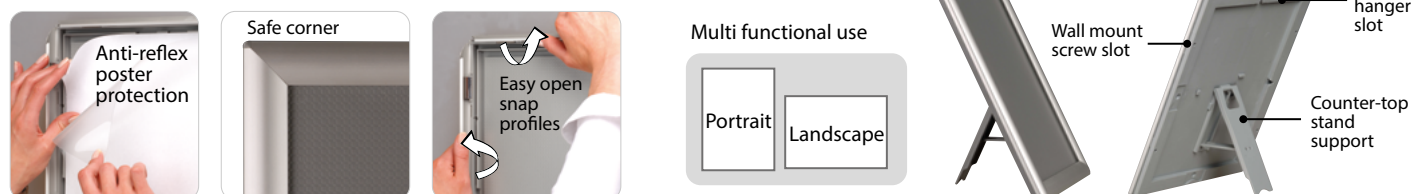
Opti Frame can be used for INDOOR applications, for signage needs in many locations like shopping centers, markets, groceries, hotels, offices airports, shops, banks, car dealers, gas stations, restaurants, insurance companies, libraries, museums, telecom companies, travel agencies, and stores, hospitals, schools, apartments and many more.

WATCH VIDEO



Watch video at our website
www.mtdisplaysllc.com

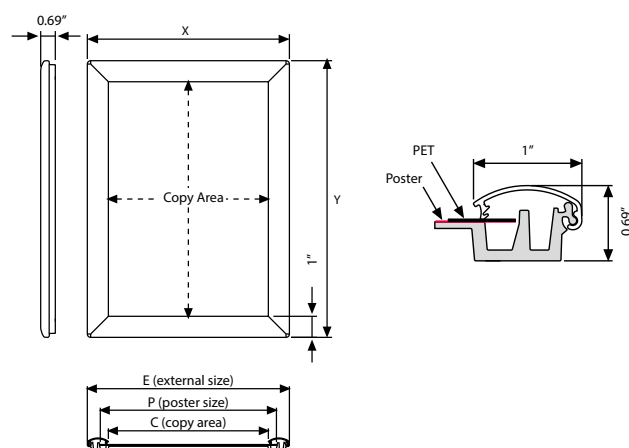
FEATURES



EXPLODED VIEW



TECHNICAL DRAWING



T: +1 855-478-0652 / info@mtdisplaysllc.com / www.mtdisplaysllc.com

ARTICLES

MATERIAL : Silver anodized aluminum PROFILE : 1" / 450

ARTICLE	EXTERNAL (x-y)	POSTER	COPY	DESCRIPTION
UCP255N081	9.72" X 12.22"	8.5" X 11"	7.75" X 10.25"	Without support
UCP255N181	9.72" X 12.22"	8.5" X 11"	7.75" X 10.25"	With support
UCP255N017	12.22" X 18.22"	11" X 17"	9.78" X 15.78"	Without support
UCP255N022	23.22" X 29.22"	22" X 28"	21.25" X 27.25"	Without support

WEIGHT	PACKING SIZE
WITH PACKING	*W X H X D
0.981 lbs	10.63" X 13.39" X 0.94"
0.981 lbs	10.63" X 13.39" X 0.94"
1.873 lbs	12.99" X 18.90" X 0.94"
4.034 lbs	23.62" X 29.53" X 0.94"

MATERIAL : Black powder coated RAL 9005 PROFILE : 1" / 450

ARTICLE	EXTERNAL (x-y)	POSTER	COPY	DESCRIPTION
UCP255B081	9.72" X 12.22"	8.5" X 11"	7.75" X 10.25"	Without support
UCP255B181	9.72" X 12.22"	8.5" X 11"	7.75" X 10.25"	With support
UCP255B017	12.22" X 18.22"	11" X 17"	9.78" X 15.78"	Without support
UCP255B022	23.22" X 29.22"	22" X 28"	21.25" X 27.25"	Without support

WEIGHT	PACKING SIZE
WITH PACKING	*W X H X D
0.981 lbs	10.63" X 13.39" X 0.94"
0.981 lbs	10.63" X 13.39" X 0.94"
1.873 lbs	12.99" X 18.90" X 0.94"
4.034 lbs	23.62" X 29.53" X 0.94"

MATERIAL : Wood Look Effect PROFILE : 1" / 450

ARTICLE	EXTERNAL (x-y)	POSTER	COPY	DESCRIPTION
UCP255W181	9.72" X 12.22"	8.5" X 11"	7.75" X 10.25"	Without support

WEIGHT	PACKING SIZE
WITH PACKING	*W X H X D
0.981 lbs	10.63" X 13.39" X 0.94"

OPTIONAL ACCESSORIES



Counter Support / UYUP460200
Packed in 10.



Screw and Wall Plug / UYUP360110
Packed in 10.

PHYSICAL DATA

Material

1" aluminum profiles.
PET poster cover. Patterned PS backing or ABS backing. Injection moulded plastic, foldable back easel.

Poster Material & Thickness

0.0039" – 0.0078" for standard product. Max poster thickness is 0.059". Any non-standard poster thicknesses should be indicated with order.

Surface Finish

Silver anodized, wood lining or black colour, antimicrobial powder coating. Custom colors also available, call for custom color requests.

Recycled Content

Up to %78 recycled content used.

Warranty

All products are guaranteed for 3 years by MT Displays with below conditions:

[Warranty Conditions](#)

Installation Considerations

Opti Frame comes ready for wall mounting slots. On large frames comes with 2 slots on both long sides and small frames 1 slot on one long and one short side. Wall hanging is also available with wall hanger slots; placed on one of short and long sides. Opti Frame is packed individually in a cardboard box in standard.

Storage Conditions

Goods should be stored at 32°F to 77°F in a dry place. Store in the original package.

Design Considerations

Optional counter support offers a new counter stand position available as standard in each unit in portrait and landscape position for size of 8.5"x11". Rounded mitred corners ensure maximum safety in public areas. 1" profile is suitable for silk screen printing, max. letter height is 0.59". No custom sizes available.

Cleaning and Disinfecting

Clean your displays, with damp microfiber clothes, rinsed with simply water or warm, soapy or gentle shampooed water. Avoid using vinegar, abrasive, acidic, alcohol-based or heavy cleaners or cleaners containing Ammonia. Only after cleaning the product, if needed, simply apply disinfectant or sanitizer that is in compliance with your local guidelines and regulations.

Certifications / Patents

Patent: PCT/TR06/000018 - WO 2007/126397 - EP 2016574 - DE 20 2006 020 145 - US 2009/211134 - AU 2006342800 - CN 101473363 - CA 2654307 - UA 2008 13893 - EA 200802174/26 - IN WO 2007/126397 - ZA 2008/09638 - TR 2007 05704 - OHIM 831235-0001,2,3,4

PRINT TEMPLATES

Opti Frame 1" - 8.5"x11"

Document Size: 8.89" x 11.4" (Includes Bleeds)

Finished Size: 8.5"x11" [Print](#)

Opti Frame 1" - 11"x17"

Document Size: 11.4" x 17.4" (Includes Bleeds)

Finished Size: 11"x17" [Print](#)

Opti Frame 1" - 22"x28"

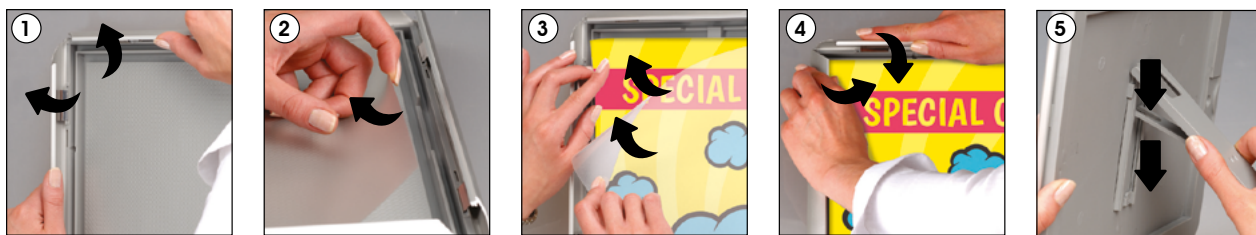
Document Size: 22.4" x 28.4" (Includes Bleeds)

Finished Size: 22"x28" [Print](#)

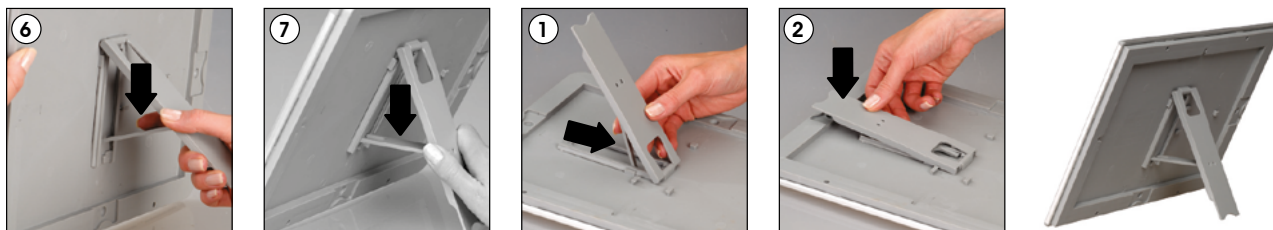


INSTALLATION INSTRUCTIONS

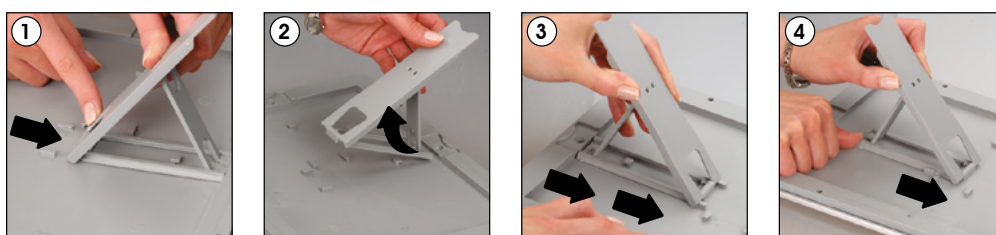
Opti Frame 1" with Support



Closing the support tool

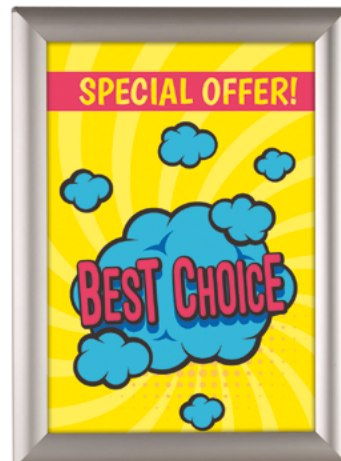
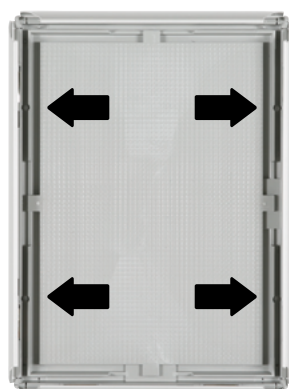
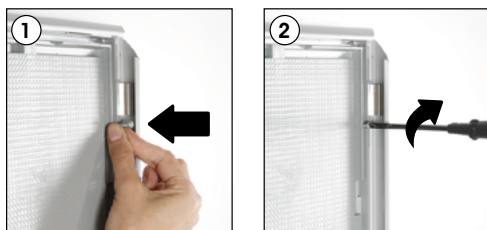


Changing the position of the frame (Horizontal & Vertical)

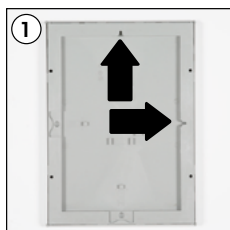


Storage conditions: Goods should be stored at 0°-35°C in a dry place. Store in the original package.

Screw & anchor mounting



Hanger mounting



Landscape or portrait positions



- For product questions or concerns please contact customer care.
Please have your order number / carton (e.g. 1/110001394-460) available to help expedite the process.
- All rights reserved. All pictures, figures and writings are secured internationally by copy-right law.

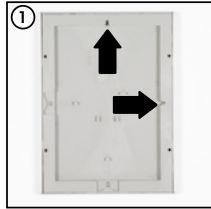
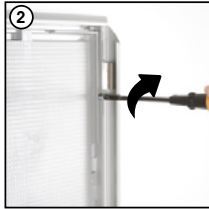
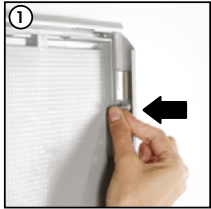
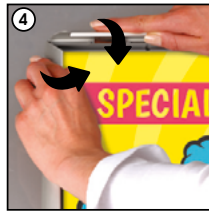
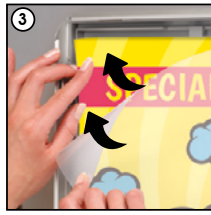
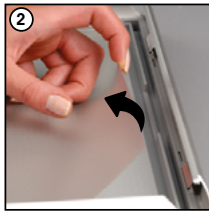
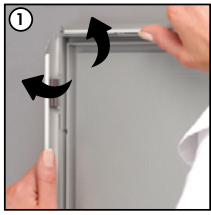
- Please inform the order number on the product or on the carton (e.g. 1/110001394-460) to the place that you have made the purchase if any problem with the product occurs.
- All rights reserved. All pictures, figures and writings are secured internationally by copy-right law. Infringements will be sued by civil and legal law.



T: +1 855-478-0652 / info@mtdisplaysllc.com / www.mtdisplaysllc.com

INSTALLATION INSTRUCTIONS

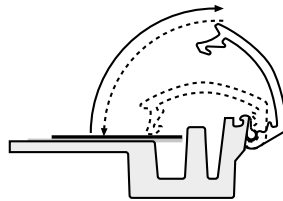
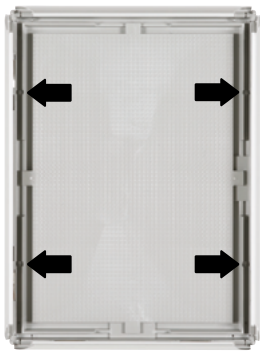
Opti Frame 1" without Support



Screw & anchor mounting

Hanger mounting

Landscape or portrait positions



Storage conditions: Goods should be stored at 0°-35°C in a dry place. Store in the original package.

- Please inform the order number on the product or on the carton (e.g. 1/110001394-460) to the place that you have made the purchase if any problem with the product occurs.
- All rights reserved. All pictures, figures and writings are secured internationally by copy-right law. Infringements will be sued by civil and legal law.

This technical sheet's contents are all subject to update and modification at MT Displays' exclusive discretion. There is nothing official about this document. For final and legally binding information, please get in touch with the sales staff at MT Displays.



T: +1 855-478-0652 / info@mtdisplaysllc.com / www.mtdisplaysllc.com