

NOTICEBOARD WITH LED LIGHT



EDGE-LIT NOTICEBOARDS FOR YOUR ADS, ANNOUNCEMENTS AND NOTES

Suitable for outdoor use. LEDs on the top and the bottom of the profile illuminate the interior of the frame. 4x(8.5"x11"), 6x(8.5"x11"), 9x(8.5"x11") and 12x(8.5"x11") paper capacity sizes are available. Noticeboard can be used both in portrait and landscape positions. Each unit includes a free set of pins or magnets. The profile width is 2.75" and the depth of the case 1.96".

KEY SELECTION ATTRIBUTES

- * OUTDOOR FRIENDLY, wall-mounting, edge-lit and lockable noticeboards in 2 different models; with cork, dry-wipe magnetic
- * Suitable for wall mounting with 4x(8.5"x11"), 6x(8.5"x11"), 9x(8.5"x11") and 12x(8.5"x11") paper capacity sizes in landscape or portrait positions.
- * Perfect way to offer multiple services, present/change messages, announcements and promotions in outdoor places under a shelter or public buildings like offices, hospitals, schools and more.
- * One set includes 2.75" natural silver anodised aluminium lockable frame with 1.96" depth; LED channels on top and bottom profiles for illuminating interior of the frame; galvanised backing; PET-G protective cover; 2 handles at each end to keep the cover door open; black rubber seal inside the cover door; depending on the model - cork, white painted steel. keys; 2 wall hanger profiles, 4 screws and 4 anchors, 1 allen key, 2 M4-Bolts, 4 M6-Bolts for installing on wall;

- 1 power adapter with 137.79" long cable and EU plug. UK and US plug should be specified with order. Power supply must be located indoors or in a waterproof enclosure.
- * Supplied with quality certificates and CE/UL PAT test reports passed.
- * Each product includes 1 key set of single variation.
- * Lockable cover can be opened to 90 degrees.
- * Each frame with cork surface includes a set of pins. Each frame with steel surface includes a set of magnets.
- * Each unit is packed with mounting set and easy-to-understand installation sheet.
- * Please discard the protective film on the unit before use.
- * Please throw away the silicagel on the cork once the unit is opened.
- * Please do not drill the product while mounting, only use the mounting arms.



COLOURS IN STOCK



Silver

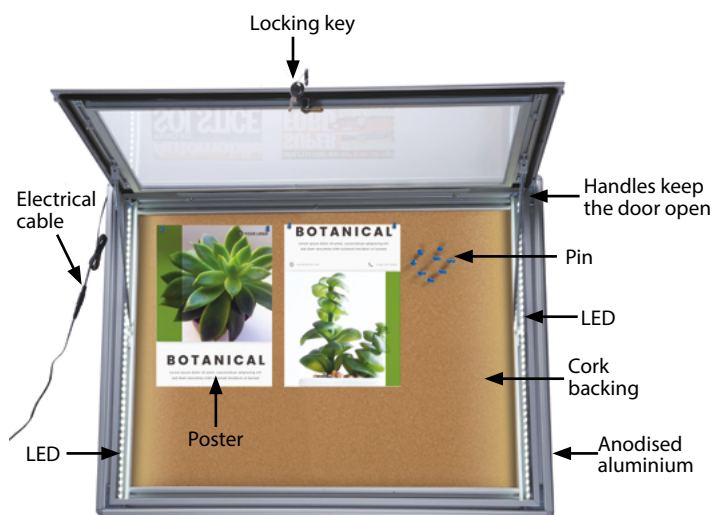
SUITABLE FOR

Noticeboards are OUTDOOR FRIENDLY, they can be used for signage needs in many locations like shopping centers, markets, groceries, hotels, offices airports, shops and stores, hospitals, schools, apartments, banks, car dealers, restaurants, telecom companies, insurance companies, libraries, museums, travel agencies and many more.

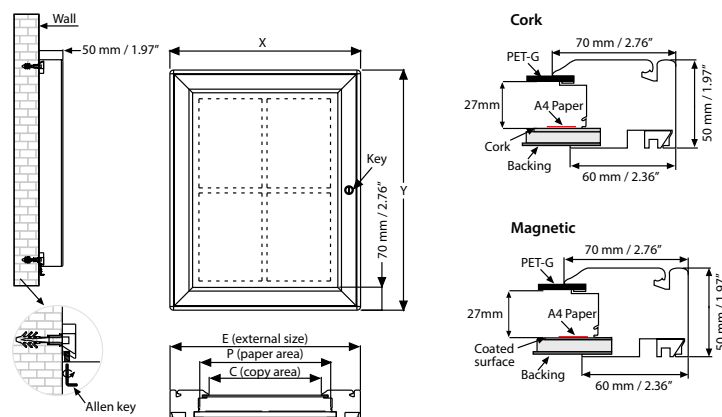
FEATURES



EXPLODED VIEW



TECHNICAL DRAWING



Size of boards for all Noticeboards models:

	4(8.5"x11")	6(8.5"x11")	9(8.5"x11")
	(8.5"x11")	(8.5"x11")	(8.5"x11")
	(8.5"x11")	(8.5"x11")	(8.5"x11")
	(8.5"x11")	(8.5"x11")	(8.5"x11")
	(8.5"x11")	(8.5"x11")	(8.5"x11")
	(8.5"x11")	(8.5"x11")	(8.5"x11")

ARTICLES

CORK	MAGNETIC	M&C	EXTERNAL (x-y)	PAPER AREA	COPY	CAPACITY	WEIGHT WITH PACKING			PACKING SIZE	
							CORK	MAGNETIC	M&C	*W X H X D	
UNBNOL04A4	UNBN1L04A4	UNBN2L04A4	590 X 760 mm	483 X 653 mm	450 X 620 mm	4 X A4	8,500 kg	9,750 kg	9,750 kg	620 X 780 X 80 mm	
UNBNOL06A4	UNBN1L06A4	UNBN2L06A4	590 X 1080 mm	483 X 973 mm	450 X 940 mm	6 X A4	11,250 kg	13,340 kg	13,300 kg	620 X 1100 X 80 mm	
UNBNOL09A4	UNBN1L09A4	UNBN2L09A4	820 X 1080 mm	713 X 973 mm	680 X 940 mm	9 X A4	14,600 kg	17,600 kg	17,600 kg	850 X 1100 X 80 mm	

PHYSICAL DATA

Material

2.75" aluminium profiles with 1.96" depth, LED channels, galvanised steel backing, PET-G protective cover, cork and/or painted steel boards.

Surface Finish

Natural silver anodized aluminium frame, PET-G protective cover, cork and/or white painted steel surfaces.

Storage Conditions

Goods should be stored at 32°F to 77°F in a dry place. Store in the original package.

Recycled Content

Up to 78% recycled content used.

Warranty

All products are guaranteed for 3 years by MT Displays with below conditions:

[Warranty Conditions](#)

Installation Considerations

Noticeboards are packed with mounting set and easy-to-understand installation sheet. One set includes 2.75" natural silver anodised aluminium lockable frame with 1.96" depth; LED channels on top and bottom profiles for illuminating interior of the frame; galvanised backing; PET-G protective cover; 2 handles at each end to keep the cover door open; black rubber seal inside the cover door; depending on the model - cork, white painted steel or cork&perforated white painted steel inner boards for pinning and changing notes easily; keys; 2 wall hanger profiles, 4 screws and 4 anchors, 1 allen key, 2 M4-Bolts, 4 M6-Bolts for installing on wall; 1 power adapter with 137.79" long cable and EU plug. UK and US plug should be specified with order. Power supply must be located indoors or in a waterproof enclosure. Please do not drill the product while mounting, only use the mounting arms. Each product includes 1 key set of single variation. Lockable cover can be opened to 90 degrees. Each frame with cork board includes a set of pins. Each frame with steel board includes a set of magnets. Please discard the protective film on the unit before use. Please throw away the silicagel on the cork once the unit is opened.

Design Considerations

OUTDOOR FRIENDLY, wall-mounting, edge-lit and lockable noticeboards in 2 different models; with cork, dry-wipe magnetic. Suitable for wall mounting with 4x(8.5"x11"), 6x(8.5"x11"), 9x(8.5"x11") and 12x(8.5"x11") paper capacity sizes in landscape or portrait positions. Perfect way to offer multiple services, present/change messages, announcements and promotions in outdoor places under a shelter or public buildings like offices, hospitals, schools and more. Supplied with quality certificates and CE/UL PAT test reports passed.

Cleaning and Disinfecting

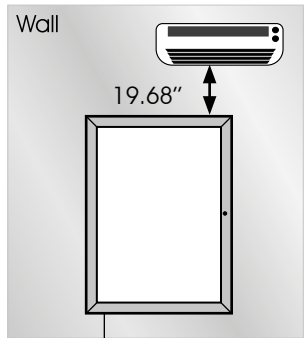
Clean your displays, with damp microfiber clothes, rinsed with simply water or warm, soapy or gentle shampooed water. Avoid using vinegar, abrasive, acidic, alcohol-based or heavy cleaners or cleaners containing Ammonia. Only after cleaning the product, if needed, simply apply disinfectant or sanitizer that is in compliance with your local guidelines and regulations.



T: +1 855-478-0652 / info@mtdisplaysllc.com / www.mtdisplaysllc.com

ILLUMINATED PRODUCTS TECHNICAL MANUAL

CAUTION



95°F Indoor maximum temperature (incl. daily sunny hours.) It should be assembled 11.81" from the window.

POWER SUPPLY

- 12 V DC
- Complete with power supply
- 2 year guaranteed
- 7/16 use
- If 7/24 use required, please order individually.

TECHNICAL SPECIFICATION

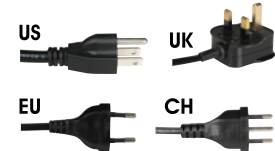
CORK	MAGNETIC	M&C	CAPACITY	POWER CONSUMPTION	POWER SUPPLY RECOMMENDED
UNBN0L04A4	UNBN1L04A4	UNBN2L04A4	4 X 8.5"x11"	24 W / 2 A	3 A
UNBN0L06A4	UNBN1L06A4	UNBN2L06A4	4 X 8.5"x11"	24 W / 2 A	3 A
UNBN0L09A4	UNBN1L09A4	UNBN2L09A4	4 X 8.5"x11"	34.56 W / 2.88 A	4 A

FEATURES

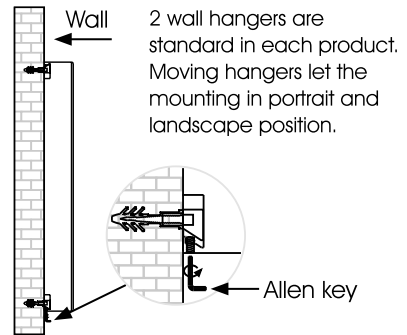
- Suitable for outdoor use
- Improved Led technology for improved luminance.
- Pre-treated light guided panel diffuses light even & powerful.
- Saves up to 60% energy costs.
- CE certificate provided..

CABLE

Delivered with 98.42" long cable and EU plug. UK, US or CH plugs should be specified with order. Extension cable: 0.039", 0.078", 0.11".

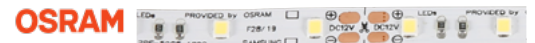


HANGER



LED FEATURES (Duris E 2835)

Led dimentions: 0.11" x 0.055"
Processing technology: White SMT package, colored diffused silicone resin
Viewing angle at 50 % IV: 120°
Color: 2700K - 6500K (warm, neutral and cool white)
CRI: 84-88
Luminous flux: Typ. 30 lm @ 6500K
Luminous efficacy: Typ. 153 lm/W @ 6500K
Lumen maintenance: Typ. 169 lm/A @ 6500K
Life time: 50.000 hours



ASSEMBLY SHEET



INSTALLATION INSTRUCTIONS

Noticeboard with LED Light

Each product includes wall mounting accessories

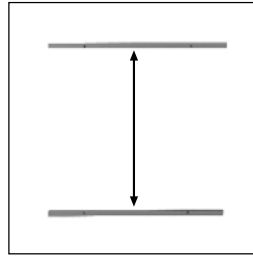
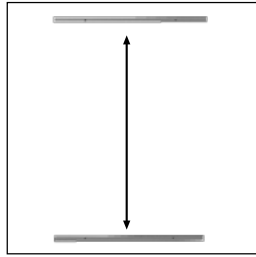
- 2 x Wall hanger profile
- 4 x Screw & anchor set
- 1 x Power Adapter
- 1 x 3 allen key
- 2 x Bolt M4x10
- 4 x Bolt M6x12

Pin for Cork model

- 16 x for 4xA4
- 24 x for 6xA4
- 36 x for 9xA4

Magnetic button

- 16 x for 4xA4
- 24 x for 6xA4
- 36 x for 9xA4



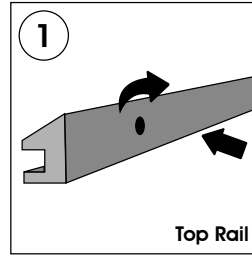
Distance calculated between the underside of the top rail and the top side of the bottom rail.

Portrait/Vertikal/Dikey

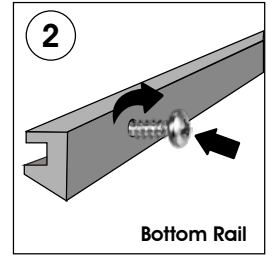
- 4XA4 : 717 mm
- 6xA4 : 1037 mm
- 9XA4 : 1037 mm

Landscape/Horizontal/Yatay

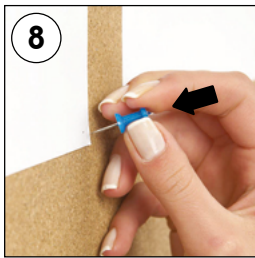
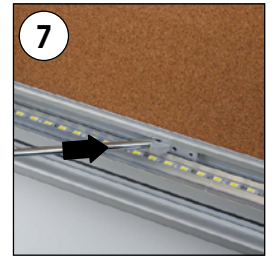
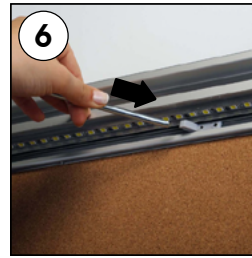
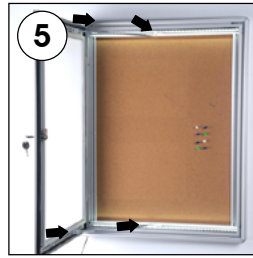
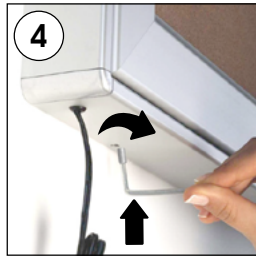
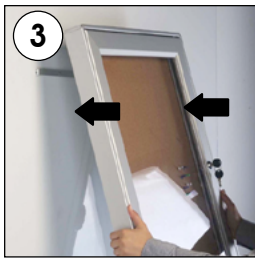
- 4XA4 : 549 mm
- 6xA4 : 549 mm
- 9XA4 : 779 mm



Top Rail



Bottom Rail



Noticeboard with Cork



Magnetic Noticeboard

* The Transformer (power supply) must be located indoors or in a waterproof enclosure.

- Please inform the order number on the product or on the carton (e.g. 1/110001394-460) to the place that you have made the purchase if any problem with the product occurs.
- All rights reserved. All pictures, figures and writings are secured internationally by copy-right law. Infringements will be sued by civil and legal law.

This technical sheet's contents are all subject to update and modification at MT Displays' exclusive discretion. There is nothing official about this document. For final and legally binding information, please get in touch with the sales staff at MT Displays.



T: +1 855-478-0652 / info@mtdisplaysllc.com / www.mtdisplaysllc.com