

MAXI FRAME WITH LED

MAXI
frame



FRAMELESS LOOKING FABRIC AD SIGNS WITH HOMOGENOUS ILLUMINATION

Used with wall mounting fixture on the back. The unit is single sided & edge-lit. Pre-treated light guided panel diffuses light even & powerful. Offers evenly diffused lux in all sizes.

KEY SELECTION ATTRIBUTES

- * A very new and fresh looking, single-sided, wall hanging, edge-lit Maxi Frame system, combining long lasting LED technology bulbs, aluminium Dame Profile and sewed or nylon strip for application of printed fabric posters.
- * One of the most attractive frame designs in the market with frameless look when viewed from the front side.
- * Powerful illumination is achieved by specially treated acrylic and provides homogenous illumination. Offers evenly diffused lux in all sizes. Depending on the size, 1400 to 3900 lux of luminance is achieved.
- * LED bulbs are not seen from outside, since they are embedded in sides of the frame.
- * Suitable for INDOOR applications with 20"x30", 30"x40" and 40"x60" poster sizes in portrait and landscape position.
- * Maxi Frames with LED can be ordered in standard sizes. They can also be ordered in special lengths and parts as semi products.
- * Supplied with quality certificates and CE/UL PAT test reports passed. Complies with EN55015 & EN61547.
- * Natural silver-anodized in standard and various RAL colors available with antimicrobial powder coating. Subject to MOQ.
- * One set includes a single sided 1.26" Dame Profile frame with 0.16" profile thickness and 1.34" depth; and embedded LED bulbs; 1.42"x0.75" aluminium H-profile for 39.37" and more wider poster sizes; specially treated acrylic backing to diffuse light evenly across graphics; 0.12" clear nylon strips; connectors and cleats; 2 wall hangers; on/off switch on profile; 1 power supply with 3,5 meter long cable and 1 EU Plug. UK, US and Australian plugs are available, should be specified with order. All electrical components are CE listed.
- * Optional dimmer is available. Adjusting the light from dark to max lux of LED illuminated frame.
- * Used with 2 wall mounting fixtures on the back. Moving hangers let the mounting in portrait and landscape position.
- * Fabric is not included in the original pack.
- * Recommended fabric thickness for digital printing is 0.02". Thickness of the profile is 4mm. Thickness of nylon strip is 0.12". The pull sticker in 0.02" thickness must be sewed on the fabric for taking out the poster when fitted into the channels.
- * 0.51" on each side of the fabric into Maxi Profiles, so 1.02" on each Fabric Poster is not seen on the poster. Please arrange accordingly.
- * Profiles and connector parts for the required sizes are packed unassembled in a single box with an easy mounting instruction sheet. Fixing tools are included in each frame.
- * Products are suitable to use 7/16. For using the LED frame for 24 hours a day and 7 days a week, please ask for special 7/24 power supplies.



COLOURS IN STOCK



Silver

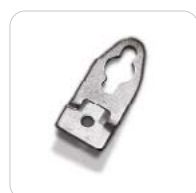
SUITABLE FOR

Maxi Frame with LED can be used for INDOOR applications, for signage needs in many locations like shopping centers, markets, groceries, hotels, offices airports, shops and stores, hospitals, schools, apartments, banks, car dealers, restaurants, telecom companies, insurance companies, libraries, museums, travel agencies and many more.

FEATURES

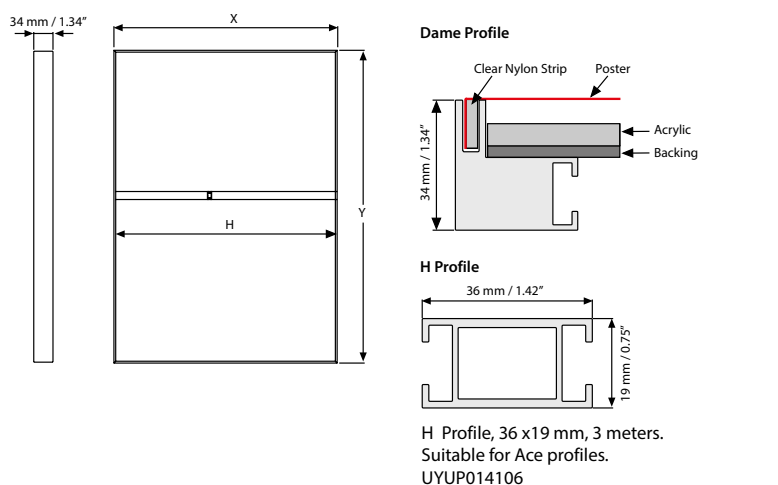


EXPLODED VIEW



2 wall hangers are standard in each product. Moving hangers let the mounting in portrait and landscape position.

TECHNICAL DRAWING



Application of nylon strip by sew-on process



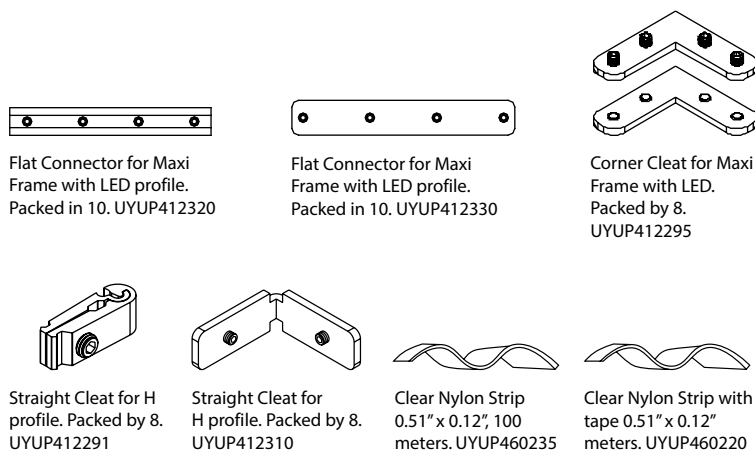
Application of nylon strip by double sided tape



ARTICLES

ARTICLE	EXTERNAL (x-y)	H (mm)	H (Pcs)	LIGHTING	WEIGHT	PACKING SIZE
					WITH PACKING	*W X H X D
UMLD340018	18" X 24"	-	-	2200-2500 LUX	11.243 lbs	18.90" X 25.59" X 1.69"
UMLD340022	22" X 28"	-	-	2300-2700 LUX	14.991 lbs	22.83" X 29.53" X 1.69"
UMLD340023	20" X 30"	-	-	2600-2800 LUX	14.991 lbs	20.87" X 31.50" X 1.69"
UMLD340024	24" X 36"	-	-	2600-2800 LUX	19.400 lbs	34.80" X 37.80" X 1.69"
UMLD340034	30" X 40"	-	-	1900-2100 LUX	23.809 lbs	31.10" X 41.34" X 1.69"
UMLD340036	36" X 48"	-	-	2000-2200 LUX	33.951 lbs	36.81" X 49.61" X 1.69"
UMLD340046	40" X 60"	37.48"	1	1900-2300 LUX	45.194 lbs	40.94" X 61.42" X 1.69"

COMPONENTS OF MAXI FRAMES



T: +1 855-478-0652 / info@mtdisplaysllc.com / www.mtdisplaysllc.com

PHYSICAL DATA

Material

1.26" aluminium profile frame with 34 mm depth, 1.42"x0.75" aluminium H-profile, clear nylon strips, metal connectors, acrylic backing, LED bulbs.

Surface Finish

Natural silver-anodized in standard and various RAL colors available with antimicrobial powder coating. Subject to MOQ. Call for custom color requests.

Storage Conditions

Goods should be stored at 32°F to 77°F in a dry place. Store in the original package.

Recycled Content

Up to 78% recycled content used.

Warranty

All products are guaranteed for 2 years by MT Displays with below conditions:

[Warranty Conditions](#)

Installation Considerations

Profiles and connector parts of Maxi Frame with LED for the required sizes are packed unassembled in a single box with an easy mounting instruction sheet. Fixing tools are included in each frame. Supplied with quality certificates and CE/UL PAT test reports passed. Complies with EN55015 & EN61547. One set includes a single sided 1.26" Dame Profile frame with 0.16" profile thickness and 1.34" depth; and embedded LED bulbs; 1.42"x0.75" aluminium H-profile for 39.37" and more wider

frame sizes; specially treated acrylic backing to diffuse light evenly across graphics; 0.12" clear nylon strips; connectors and cleats; 2 wall hangers; on/off switch on profile; 1 power supply with 3,5 meter long cable and 1 EU Plug. UK, US and Australian plugs are available, should be specified with order. All electrical components are CE listed. Optional dimmer is available, adjusting the light from dark to max lux of LED illuminated frame. Products are suitable to use 7/16. For using the LED frame for 24 hours a day and 7 days a week, please ask for special 7/24 power supplies. Used with 2 wall mounting fixtures on the back. Moving hangers let the mounting in portrait and landscape position. Fabric is not included in the original pack. 0.51" on each side of the fabric into Maxi Profiles, so 1.02" on each Fabric Poster is not seen on the poster. Please arrange accordingly. Maxi Frames with LED can be ordered in standard sizes. They can also be ordered in special lengths and parts as semi products.

Poster Material & Thickness

Recommended fabric thickness for digital printing is 0.02". Thickness of the channel is 0.16". Thickness of nylon strip is 0.12". The pull sticker in 0.02" thickness must be sewed on the fabric to take out the poster from channels.

Design Considerations

A very new and fresh looking, single-sided, wall hanging, edge-lit Maxi Frame system, combining long lasting LED technology bulbs, aluminium

Dame Profile and sewed or nylon strip for application of printed fabric posters. One of the most attractive frame designs in the market with frameless look when viewed from the front side. Powerful illumination is achieved by specially treated acrylic and provides homogenous illumination. Offers evenly diffused lux in all sizes. Depending on the size, 1400 to 3900 lux of luminance is achieved. LED bulbs are not seen from outside, since they are embedded in sides of the frame. Suitable for INDOOR applications with 20"x30", 30"x40" and 40"x60" poster sizes in portrait and landscape position.

Cleaning and Disinfecting

Clean your displays, with damp microfiber clothes, rinsed with simply water or warm, soapy or gentle shampooed water. Avoid using vinegar, abrasive, acidic, alcohol-based or heavy cleaners or cleaners containing Ammonia. Only after cleaning the product, if needed, simply apply disinfectant or sanitizer that is in compliance with your local guidelines and regulations.

PRINT TEMPLATES

Maxi Frame with LED - 18"x24"

Document Size: 20.36" x 26.36" (Includes Bleeds)

Finished Size: 18"x24"

Maxi Frame with LED - 22"x28"

Document Size: 24.36" x 30.36" (Includes Bleeds)

Finished Size: 22"x28"

Maxi Frame with LED - 20"x30"

Document Size: 22.36" x 32.36" (Includes Bleeds)

Finished Size: 20"x30"

Maxi Frame with LED - 24"x36"

Document Size: 26.36" x 38.36" (Includes Bleeds)

Finished Size: 24"x36"

Maxi Frame with LED - 30"x40"

Document Size: 32.36" x 42.36" (Includes Bleeds)

Finished Size: 30"x40"

Maxi Frame with LED - 36"x48"

Document Size: 38.36" x 50.36" (Includes Bleeds)

Finished Size: 36"x48"

Maxi Frame with LED - 40"x60"

Document Size: 42.36" x 62.36" (Includes Bleeds)

Finished Size: 40"x60"

34mm/ Maxi Frame	Size Available	Power Consumption	Power Supply Recommended	Luminance
Single Sided	Poster Size	Single	12 Vdc, Ampere	LUX
UMLD3400A4	A4 / 297x210	5W/0,4A	1A	1900-2300
UMLD3400A3	A3 / 420x297	15,5W/1,3A	2A	3300-3900
UMLD3400A2	A2 / 594x420	25W/2,05A	3A	2700-3300
UMLD3400A1	A1 / 841x594	33W/2,75A	4A	2200-2400
UMLD3400A0	A0 / 1189x841	47,5W/3,95A	6A	1600-1800
UMLD3400B2	B2 / 700x500	28W/2,4A	3A	2400-2700
UMLD3400B1	B1 / 1000x700	31W/2,6A	4A	1700-1900
UMLD3400B0	B0 / 1400x1000	58W/4,85A	6A	1400-1800
UMLD340023	20"x30" / 508x762	31W/2,6A	4A	2600-3000
UMLD340034	30"x40" / 762x1016	39,5W/3,3A	4A	1700-2000
UMLD340046	40"x60" / 1016x1524	58W/4,85A	6A	1400-1800
Max (w x h) mm	1200X2415	X	X	X

POWER SUPPLY	
ARTICLE	DESCRIPTION
UYPLD00010	Power supply EU 3,34A 7/24
UYPLD00011	Power supply EU 6,67A 7/24
UYPLD00012	Power supply EU 8,5A 7/24
UYPLD00013	Power supply EU 11,5A 7/24

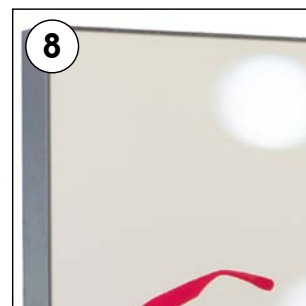
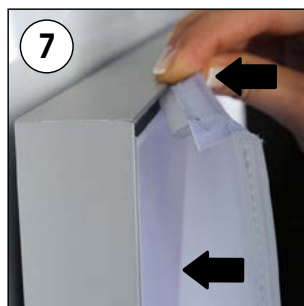
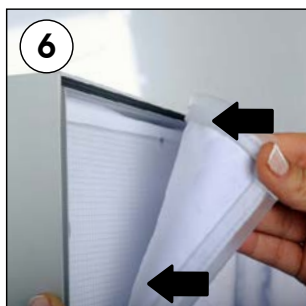
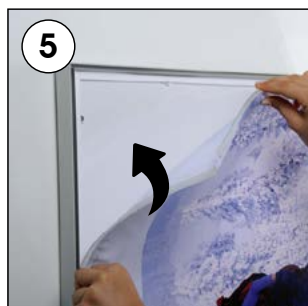
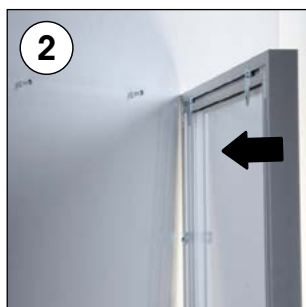
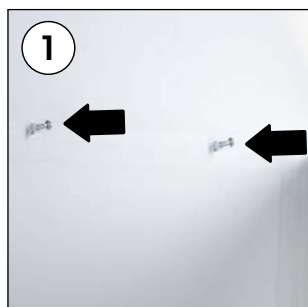
Products are suitable to use 7/16. If 7/24 use required, please order individually as 7/24 power supplies as below:



INSTALLATION INSTRUCTIONS

Maxi Frame with LED / 1005991

Landscape or portrait position



Switch on "I" position.
Switch off "0" position.

CAUTION!

- FRAGILE SWITCH ! REMOVE PADS WHEN FULLY INSTALLED.



- Please inform the order number on the product or on the carton (e.g. 1/110001394-460) to the place that you have made the purchase if any problem with the product occurs.
- All rights reserved. All pictures, figures and writings are secured internationally by copy-right law. Infringements will be sued by civil and legal law.

This technical sheet's contents are all subject to update and modification at MT Displays' exclusive discretion. There is nothing official about this document. For final and legally binding information, please get in touch with the sales staff at MT Displays.



T: +1 855-478-0652 / info@mtdisplaysllc.com / www.mtdisplaysllc.com