

MAGNETIC GLASS BOARD



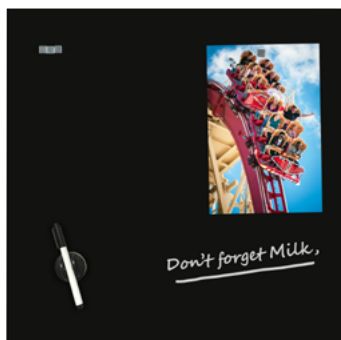
EASY BOARDS FOR YOUR ADS, ITEMS, PROMOTIONS AND NOTES

Both magnetic and dry wipe, Magnetic Glass Board offers a smart solution for offices, colleges, meeting rooms, hotels, cafes and more. Red, Black and White colour options will suit various contemporary decoration. Tempered glass increases the strength against damages. Magnets, pen holder, eraser and pen included in the pack for comfortable immediate use.

KEY SELECTION ATTRIBUTES

- * Practical and wall-mounted tempered glass dry wipe magnetic board with optional shelf design.
- * Suitable for INTERIOR use with 17.72" X 17.72", 15.75" X 23.62", 23.62" X 35.43" sizes in red, white and black colour options.
- * Suitable for wall mounting in landscape or portrait positions.
- * Perfect way to present/change messages, announcements or promotions.
- * One set includes a tempered glass magnetic chalkboard with 1 pen, 1 pen holder, 1 eraser and magnets for changing notes easily; 2 hangers and 2 screws for installing on wall.

- * Shelves are optional accessories, not included in the standard set. If needed, please order separately.
- * Tempered glass with 4mm thickness increases the strength against damages.
- * Each unit is packed in an individual box with mounting set and easy-to-understand installation sheet.



Black



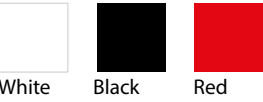
Red



White



COLOURS IN STOCK



White Black Red

SUITABLE FOR

Magnetic Glass Boards can be used for INDOOR applications, for signage needs in many locations like shopping centers, markets, groceries, hotels, offices airports, shops and stores, hospitals, schools, apartments, banks, car dealers, restaurants, telecom companies, insurance companies, libraries, museums, travel agencies and many more.

WATCH VIDEO

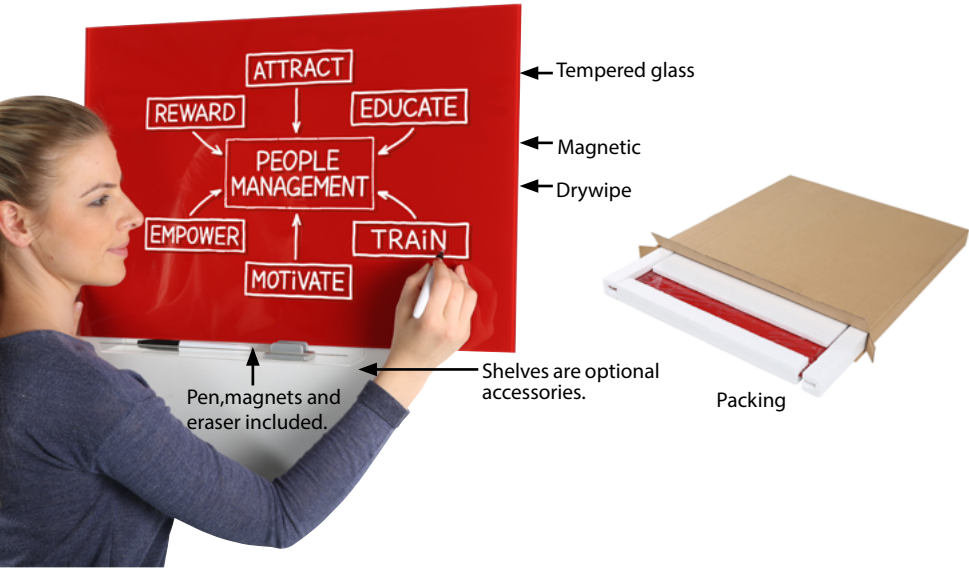


Watch video at our website
www.mttdisplaysllc.com

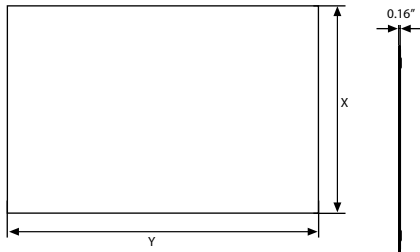
FEATURES



EXPLODED VIEW



TECHNICAL DRAWING



ARTICLES

ARTICLE	SIZE (x-y)	COLOUR	WEIGHT	PACKING SIZE
			WITH PACKING	*W X H X D
TO0MGB0335	350 X 350 mm	White	1,600 kg	380 X 390 X 45 mm
TO0MGB0135	350 X 350 mm	Black	1,600 kg	380 X 390 X 45 mm
TO0MGB0435	350 X 350 mm	Red	1,600 kg	380 X 390 X 45 mm
TO0MGB0345	450 X 450 mm	White	2,640 kg	480 X 490 X 45 mm
TO0MGB0145	450 X 450 mm	Black	2,640 kg	480 X 490 X 45 mm
TO0MGB0445	450 X 450 mm	Red	2,640 kg	480 X 490 X 45 mm
TO0MGB0346	400 X 600 mm	White	3,120 kg	440 X 640 X 45 mm
TO0MGB0146	400 X 600 mm	Black	3,120 kg	440 X 640 X 45 mm
TO0MGB0446	400 X 600 mm	Red	3,120 kg	440 X 640 X 45 mm
TO0MGB0369	600 X 900 mm	White	7,200 kg	680 X 980 X 65 mm
TO0MGB0169	600 X 900 mm	Black	7,200 kg	680 X 980 X 65 mm
TO0MGB0469	600 X 900 mm	Red	7,200 kg	680 X 980 X 65 mm
TO0MGB0362	600 X 1200 mm	White	10,390 kg	695 X 1280 X 65 mm
TO0MGB0162	600 X 1200 mm	Black	10,390 kg	695 X 1280 X 65 mm
TO0MGB0462	600 X 1200 mm	Red	10,390 kg	695 X 1280 X 65 mm

OPTIONAL ACCESSORIES



Shelf for Magnetic Glass Board.
UYMGB00000



Colour chalkboard marker. 0.39" wide.
5 Pcs. / UYAKLM1251



White chalkboard marker for Wood Display. 0.39" wide. 3 Pcs / UYAKLM1250



PHYSICAL DATA

Material
Tempered glass magnetic chalkboard.

Surface Finish
Red, white and black colours.

Recycled Content
Up to 78% recycled content used.

Warranty
All products are guaranteed for 3 years by MT Displays with below conditions:
[Warranty Conditions](#)

Storage Conditions
Goods should be stored at 32°F to 77°F in a dry place. Store in the original package.

Installation Considerations
Packed in an individual box with mounting set and easy-to-understand installation sheet. One set includes a tempered glass magnetic chalkboard with 1 pen, 1 pen holder, 1 eraser and magnets for changing notes easily; 2 hangers and 2 screws for installing on wall. Shelves are optional accessories, not included in the standard set. If needed, please order separately.

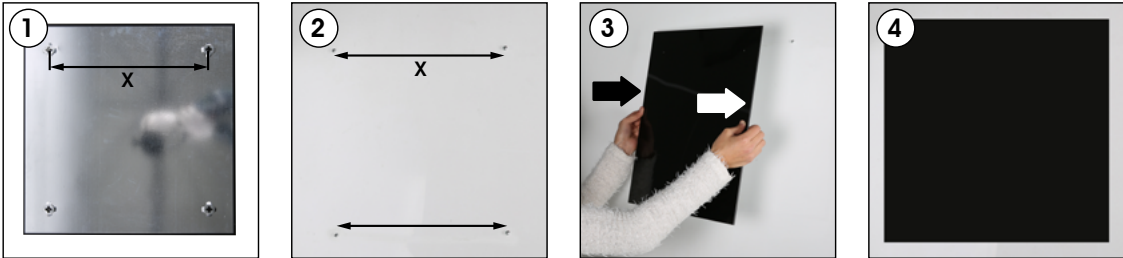
Design Considerations
Practical and wall-mounted tempered glass dry wipe magnetic board with optional shelf design. Suitable for INTEROR use with 17.72" X 17.72", 15.75" X 23.62", 23.62" X 35.43" sizes in red, white and black colour options. Suitable for wall mounting in landscape or portrait

positions. Perfect way to present/change messages, announcements or promotions. Tempered glass with 0.16" thickness increases the strength against damages.

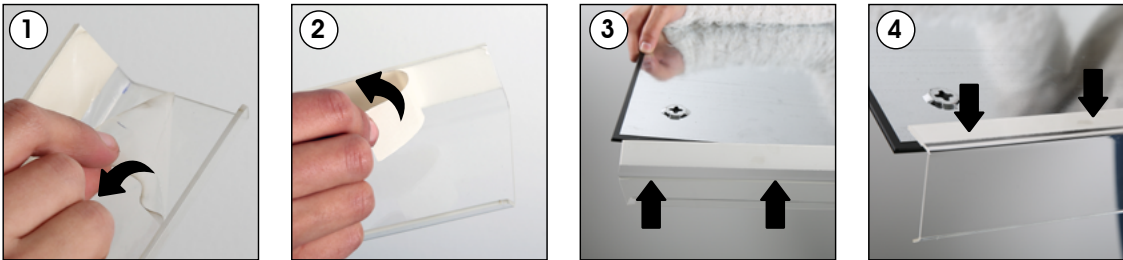
Cleaning and Disinfecting
Clean your displays, with damp microfiber clothes, rinsed with simply water or warm, soapy or gentle shampooed water. Avoid using vinegar, abrasive, acidic, alcohol-based or heavy cleaners or cleaners containing Ammonia. Only after cleaning the product, if needed, simply apply disinfectant or sanitizer that is in compliance with your local guidelines and regulations.

INSTALLATION INSTRUCTIONS

Magnetic Glass Board / 1009159



Optional shelves



Accessories (rubber & marker & magnets) are included in the original box.



- Please inform the order number on the product or on the carton (e.g. 1/110001394-460) to the place that you have made the purchase if anyproblem with the product occurs.
- All rights reserved. All pictures, figures and writings are secured internationally by copy-right law. Infringements will be sued by civil and legal law.

This technical sheet's contents are all subject to update and modification at MT Displays' exclusive discretion. There is nothing official about this document. For final and legally binding information, please get in touch with the sales staff at MT Displays.

