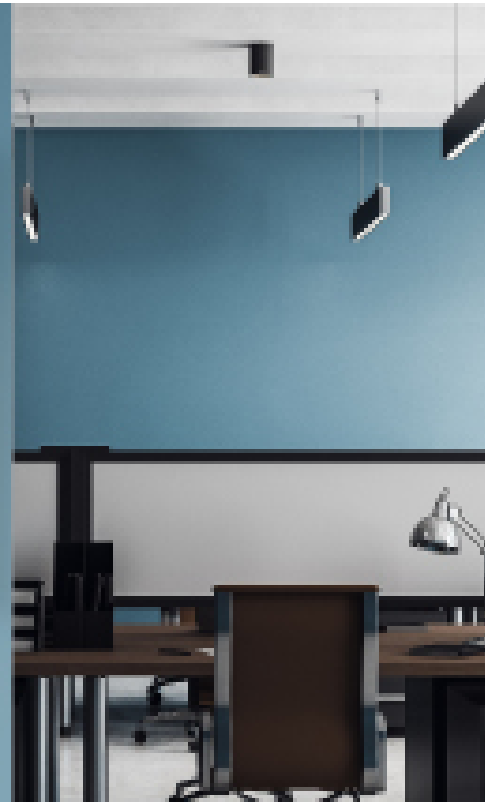
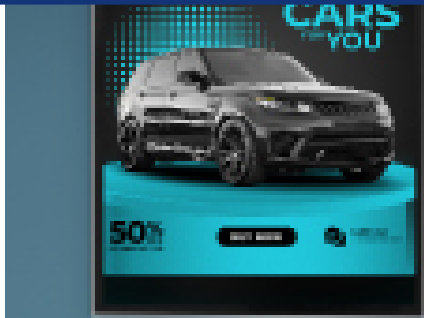


## MAGNETIC FRAME



## BE UNIQUE WITH A VERY SLIM DESIGN FOR YOUR PROFESSIONAL ADS

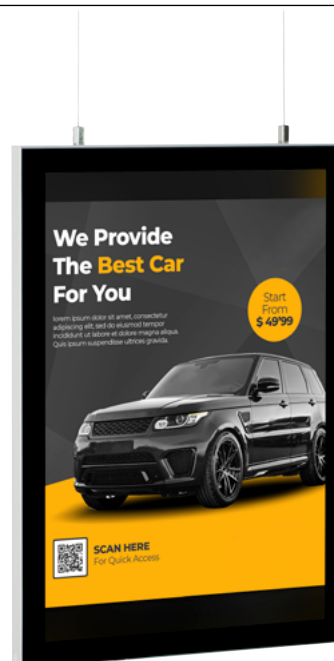
A poster frame with magnetic cover brings new style to frames. It is very slim, elegant and different than most frames available. Single Sided Magnetic Frames can be wall mounted in landscape or portrait positions. Double Sided Magnetic Frames can be easily used landscape or portrait by adjusting suspension cable manually.

## KEY SELECTION ATTRIBUTES

- Ideal for various poster sizes (max A0).
- Custom sizes options ranging from a minimum of 9.56"x12.06" to a maximum of 31.06"x41.06" landscape.
- Natural silver-anodized and various RAL colors available by order, with antimicrobial powder coating.
- Clear PC cover, magnetic and black or silver printed.
- PS backing for Single Sided Magnetic Frame.
- PP middle panel for Double Sided to prevent light transmission.
- Suitable for both landscape and portrait positions.
- Double Sided comes with hanging kit.



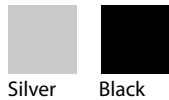
Single Sided, Landscape - Gray



Double Sided Portrait - Black



## COLOURS IN STOCK



Silver

Black

## COLOUR OPTIONS

Black - RAL 9005

Silver Anodised

Red - RAL 3020

Blue - RAL 5002

Green - RAL 6029

Yellow - RAL 1021

White - RAL 9003

## SUITABLE FOR

Suitable for use in landscape and portrait positions. Magnetic Frame can be used for INDOOR applications, for signage needs in many locations like shopping centers, markets, groceries, hotels, offices airports, shops and stores, hospitals, schools, apartments, banks, restaurants, libraries, museums, telecom companies, travel agencies and many more.

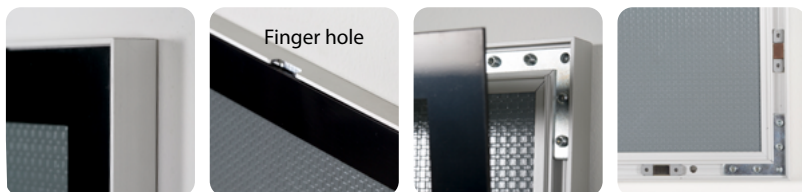
## WATCH VIDEO



Watch video at our website  
[www.mtdisplays.com](http://www.mtdisplays.com)

## FEATURES

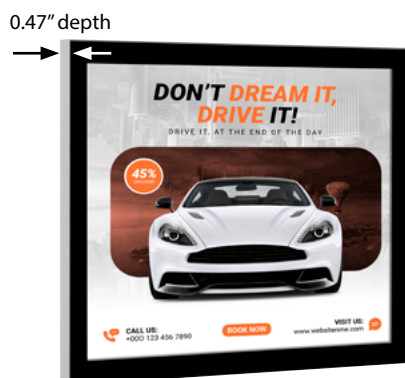
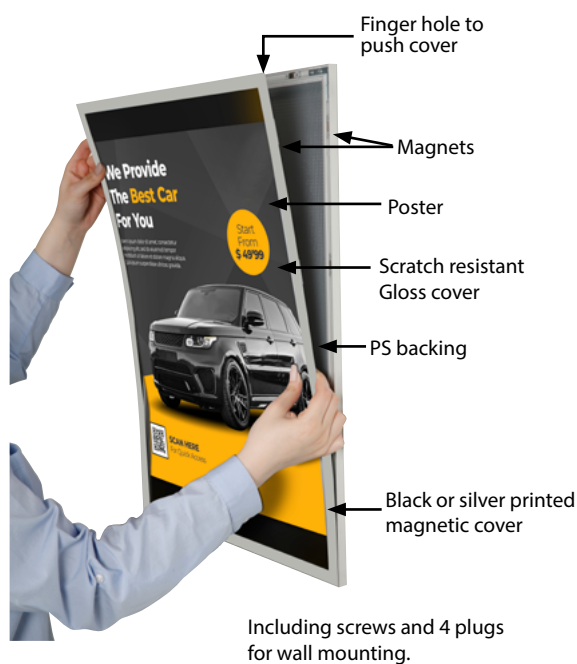
### Single sided



### Double sided



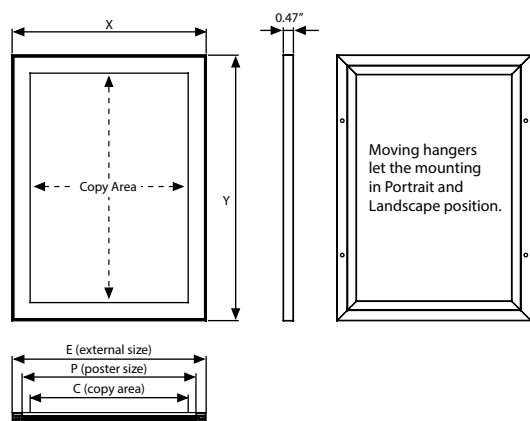
## EXPLODED VIEW



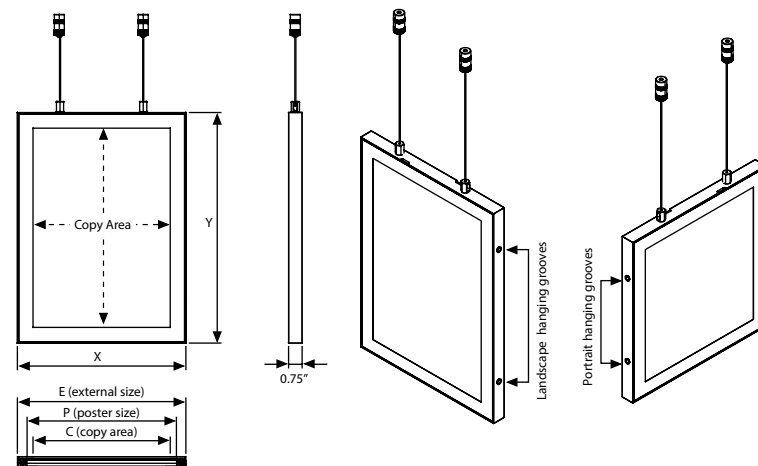
T: +1 855-478-0652 / [info@mtdisplaysllc.com](mailto:info@mtdisplaysllc.com) / [www.mtdisplaysllc.com](http://www.mtdisplaysllc.com)

# TECHNICAL DRAWING

## Single Sided



## Double Sided



## ARTICLES

SINGLE SIDED						WEIGHT	PACKING SIZE
SILVER	BLACK	EXTERNAL (x-y)	POSTER	COPY	DESCRIPTION	WITH PACKING	*W X H X D
UCMONTB081	UCMONTB081	9.56" X 12.06"	8.5" X 11"	7.83" X 10.33"	Landscape-Portrait	1.543 lbs	10.67" X 14.17" X 1.22"
UCMONTB017	UCMONTB017	12.06" X 18.06"	11" X 17"	10.33" X 16.33"	Landscape-Portrait	2.645 lbs	13.19" X 19.37" X 1.22"
UCMONTB018	UCMONTB018	19.06" X 25.06"	18" X 24"	17.33" X 23.33"	Landscape-Portrait	4.629 lbs	20.20" X 27.17" X 1.22"
UCMONTB022	UCMONTB022	23.06" X 29.06"	22" X 28"	21.33" X 27.33"	Landscape-Portrait	6.393 lbs	24.17" X 31.18" X 1.22"
UCMONTB023	UCMONTB023	21.06" X 31.06"	20" X 30"	19.33" X 29.33"	Landscape-Portrait	6.172 lbs	22.17" X 33.15" X 1.22"
UCMONTB024	UCMONTB024	25.06" X 37.06"	24" X 36"	23.33" X 35.33"	Landscape-Portrait	9.259 lbs	26.18" X 39.17" X 1.22"
UCMONTB034	UCMONTB034	31.06" X 41.06"	30" X 40"	29.33" X 39.33"	Landscape-Portrait	15.211 lbs	38.19" X 43.15" X 1.22"

Double Sided						WEIGHT	PACKING SIZE
SILVER	BLACK	EXTERNAL (x-y)	POSTER	COPY	DESCRIPTION	WITH PACKING	*W X H X D
UCMONCB081	UCMONCB081	9.56" X 12.06"	8.5" X 11"	7.83" X 10.33"	Landscape-Portrait	1.984 lbs	10.08" X 13.58" X 0.83"
UCMONCB017	UCMONCB017	12.06" X 18.06"	11" X 17"	10.33" X 16.33"	Landscape-Portrait	3.306 lbs	12.60" X 19.57" X 0.83"
UCMONCB018	UCMONCB018	19.06" X 25.06"	18" X 24"	17.33" X 23.33"	Landscape-Portrait	6.172 lbs	19.61" X 26.57" X 0.83"
UCMONCB022	UCMONCB022	23.06" X 29.06"	22" X 28"	21.33" X 27.33"	Landscape-Portrait	8.598 lbs	23.58" X 30.59" X 0.83"
UCMONCB023	UCMONCB023	21.06" X 31.06"	20" X 30"	19.33" X 29.33"	Landscape-Portrait	8.377 lbs	21.57" X 32.56" X 0.83"
UCMONCB024	UCMONCB024	25.06" X 37.06"	24" X 36"	23.33" X 35.33"	Landscape-Portrait	12.125 lbs	25.59" X 38.58" X 0.83"
UCMONCB034	UCMONCB034	31.06" X 41.06"	30" X 40"	29.33" X 39.33"	Landscape-Portrait	20.502 lbs	37.60" X 42.56" X 0.83"

## PHYSICAL DATA

### Material

Aluminum profiles. Magnetic PC poster covers, PS backing for single sided and PP middle panel for double sided.

### Poster Material & Thickness

Max poster thickness is 0.039". Any non-standard poster thicknesses should be indicated with order.

### Surface Finish

Profiles silver anodized, or black colour, antimicrobial powder coating. Magnetic cover colour options. Custom colors also available, call for custom color requests.

### Recycled Content

Up to 60% recycled content used.

### Warranty

All products are guaranteed for 3 years by MT Displays with below conditions:  
[Warranty Conditions](#)

### Installation Considerations

Can be used landscape or portrait. Complete with wall fixing components. No assembly required. Adjusting suspension cable manually for double sided. Hidden finger hole on the short profile for easy opening of magnetic cover.

### Storage Conditions

Goods should be stored at 32°F to 77°F in a dry place. Store in the original package.

### Cleaning and Disinfecting

Clean your displays, with damp microfiber clothes, rinsed with simply water or warm, soapy or gentle shampooed water. Avoid using vinegar, abrasive, acidic, alcohol-based or heavy cleaners or cleaners containing Ammonia. Only after cleaning the product, if needed, simply apply disinfectant or sanitizer that is in compliance with your local guidelines and regulations.

### Certification / Patents

[Aluminum declaration](#)



## PRINT TEMPLATES

### Magnetic Frame - 8.5"x11"

Document Size: 8.89" x 11.39" (Includes Bleeds)  
Finished Size: 8.5"x11" (215.9x279.4 mm)

### Magnetic Frame - 11"x17"

Document Size: 11.4" x 17.4" (Includes Bleeds)  
Finished Size: 11"x17" (457.2x609.6 mm)

### Magnetic Frame - 18"x24"

Document Size: 18.4" x 24.4" (Includes Bleeds)  
Finished Size: 18"x24" (457.2x609.6 mm)

### Magnetic Frame - 20"x30"

Document Size: 20.4" x 30.4" (Includes Bleeds)  
Finished Size: 20"x30" (508x762 mm) [Print](#)

### Magnetic Frame - 22"x28"

Document Size: 22.4" x 28.4" (Includes Bleeds)  
Finished Size: 22"x28" (558.8x711.1 mm)

### Magnetic Frame - 24"x36"

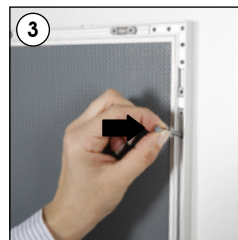
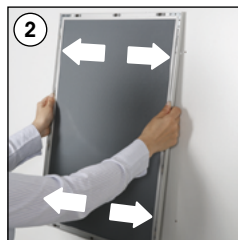
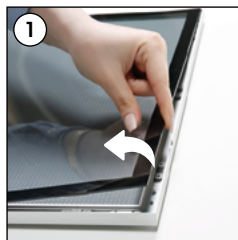
Document Size: 24.4" x 36.4" (Includes Bleeds)  
Finished Size: 24"x36" (609.6x914.4)

### Magnetic Frame - 30"x40"

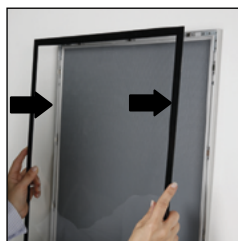
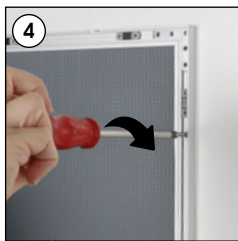
Document Size: 30.4" x 40.4" (Includes Bleeds)  
Finished Size: 30"x40" (762x1016 mm) [Print](#)

## INSTALLATION INSTRUCTIONS

### Magnetic Frame Single Sided / 1010191H000



Screw & anchor mounting



Magnets

Each frame includes wall mounting accessories (4 screws & 4 anchors)



Portrait



Landscape

- Please inform the order number on the product or on the carton (e.g. 1/110001394-460) to the place that you have made the purchase if any problem with the product occurs.
- All rights reserved. All pictures, figures and writings are secured internationally by copy-right law. Infringements will be sued by civil and legal law.



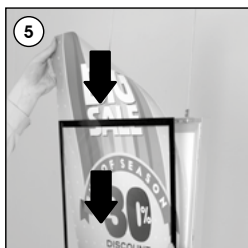
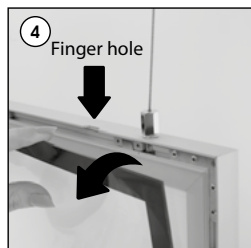
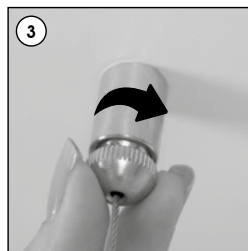
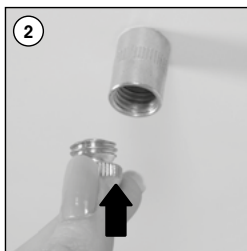
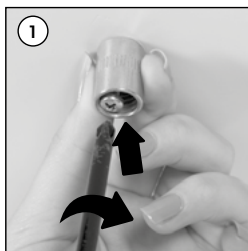
T: +1 855-478-0652 / [info@mtdisplaysllc.com](mailto:info@mtdisplaysllc.com) / [www.mtdisplaysllc.com](http://www.mtdisplaysllc.com)

# INSTALLATION INSTRUCTIONS

## Magnetic Frame Double Sided / 1010191H000

### Each product package includes

- 2 x Ceiling hanger set
- 2 x Wire cable Ø1.5, 2000mm
- 2 x Hanger M5
- 2 x Screw
- 2 x Anchor



Landscape



Portrait

- Please inform the order number on the product or on the carton (e.g. 1/110001394-460) to the place that you have made the purchase if any problem with the product occurs.
- All rights reserved. All pictures, figures and writings are secured internationally by copy-right law. Infringements will be sued by civil and legal law.

This technical sheet's contents are all subject to update and modification at MT Displays' exclusive discretion. There is nothing official about this document. For final and legally binding information, please get in touch with the sales staff at MT Displays.



T: +1 855-478-0652 / [info@mtdisplaysllc.com](mailto:info@mtdisplaysllc.com) / [www.mtdisplaysllc.com](http://www.mtdisplaysllc.com)