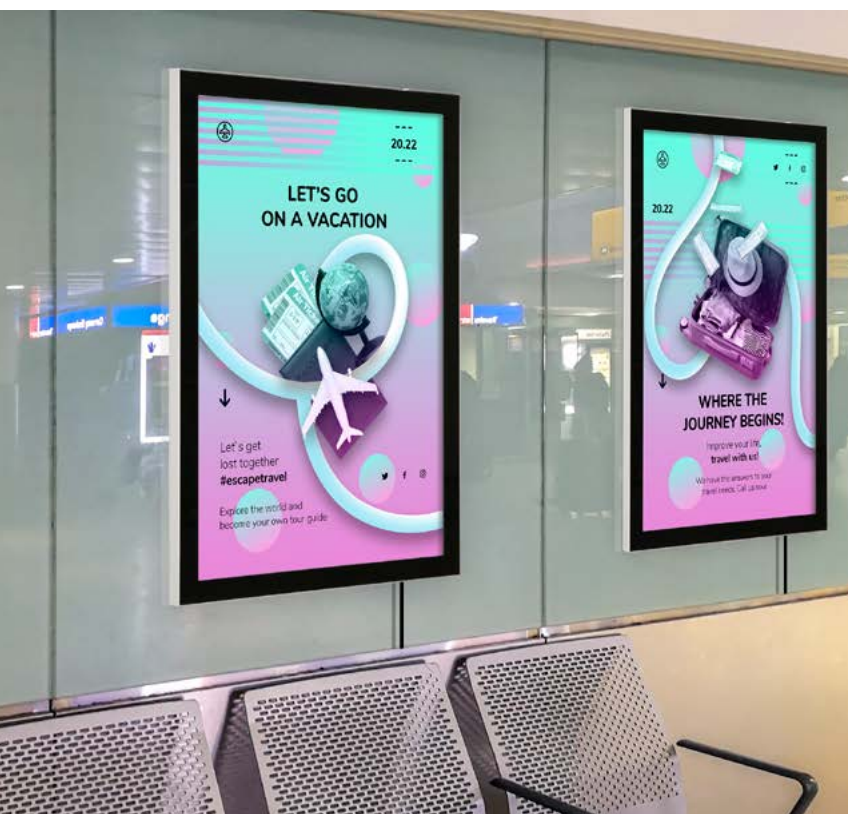


MAGNECO LEDBOX SINGLE SIDED



LONG LASTING AND LESS EXPENSIVE THAN CONVENTIONAL

Very Slim, Magneco LEDbox is a new generation in LEDboxes. With a practical magnetic protection cover, it is very easy to change the poster. High and even illumination level attracts consumers to the message. Hidden finger hole to take off the acrylic cover prevents public access to the poster.

KEY SELECTION ATTRIBUTES

- * Single-sided, wall hanging, edge-lit lightbox with a practical magnetic acrylic lens cover and long lasting LED technology bulbs.
- * One of the slimmest lightboxes in the market with 13mm profile depth.
- * Suitable for INDOOR applications with 11" x 17", 20" x 30", 22" x 28", 24" x 36", 30" x 40" poster sizes in optional portrait and landscape position.
- * High illumination is achieved by improved LED technology and laser surface treatment, giving an impressive effect to grab the passers-by.
- * LED bulbs are not seen from outside, since they are embedded in sides of the frame.
- * LED illumination save up to 60% energy costs (compared to fluorescent technology with an increased life expectancy).
- * Supplied with Quality Certificates and CE/UL PAT test reports passed.
- * Black and natural silver-anodized frame with black border in standard and various RAL colors available.
- * One set includes a single sided frame with 0.51" depth and embedded LED bulbs; specially treated 2 mm acrylic cover with a magnetic black border; 0.12" & 0.16" acrylic backing to diffuse light across graphics; clear clips to hold the poster; 2 wall hangers, 4 screws and 4 anchors for installation; 1 power adapter (12V-2A); 3,5 meter long cable and 1 EU Plug. UK and US plugs are available, should be specified with order.
- * Hidden finger hole to take off the acrylic cover prevents public access to the poster.
- * Has no switch button. Optional dimmer is available. Adjusting the light from dark to max lux of LED illuminated frame.
- * Translucent poster material should be used for printing the signage.
- * Long-term cost savings can be achieved with Magneco LED box single sided. They have a lifespan of more than 60,000 hours when utilized for 7-8 hours a day, seven days a week.
- * These illuminated frames are affordable for displaying movie posters, advertisement and translucent posters. For using LED frame 24 hours in 7 days, please ask for special 7/24 power supplies.
- * Packed with an easy mounting instruction sheet & fixing set.
- * Keep out of the direct rays of sun. Keep away from fire or severe hot place. Acceptable ambient temperature is max. 95°F.



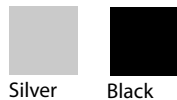
Black



Silver



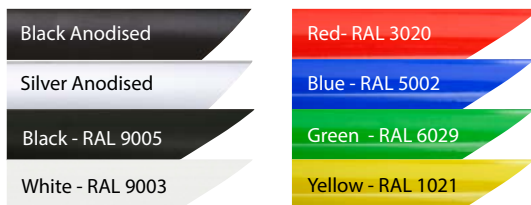
COLOURS IN STOCK



Silver

Black

COLOUR OPTIONS



WATCH VIDEO



Watch video at our website
www.mtdisplaysllc.com

SUITABLE FOR

Magneco LED Box can be used for a wide range of INDOOR applications, for signage needs in many locations like retail point-of-purchase, tradeshow displays, movie theatres, sports facilities, shopping malls, markets, groceries, hotels, airports, shops and stores, hospitals, restaurants, halls, meeting, rooms, gas stations, casinos, and more. Single Sided can be used for INDOOR applications, for signage needs in many locations like shopping centers, markets, groceries, hotels, offices airports, shops and stores, hospitals, schools, apartments, restaurants, halls, meeting rooms, gas stations and many more.

FEATURES



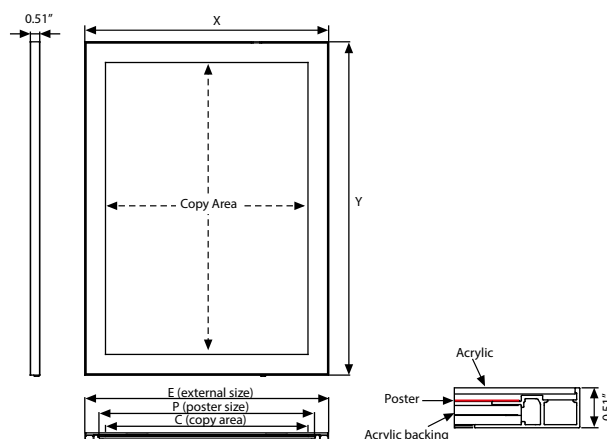
Finger hole to push cover

EXPLODED VIEW



2 wall hangers are standard in each product. Moving hangers let the mounting in portrait and landscape position.

TECHNICAL DRAWING



ARTICLES

SILVER	BLACK	EXTERNAL (x-y)	POSTER SIZE	COPY	LIGHTING	WEIGHT	PACKING SIZE
						WITH PACKING	*W X H X D
ULDMENOB17	ULDMEB0B17	12.60" X 18.58"	11" X 17"	10.31" X 16.30"	2800-3000 LUX	3.769 lbs	13.39" X 21.26" X 1.38"
ULDMENOB22	ULDMEB0B22	23.58" X 29.61"	22" X 28"	21.30" X 27.32"	2000-2200 LUX	8.620 lbs	24.41" X 32.28" X 1.38"
ULDMENOB23	ULDMEB0B23	21.57" X 31.57"	20" X 30"	23.23" X 29.29"	2200-2500 LUX	8.686 lbs	22.24" X 34.25" X 1.38"
ULDMENOB24	ULDMEB0B24	25.59" X 37.60"	24" X 36"	23.31" X 35.31"	1900-2100 LUX	15.873 lbs	26.38" X 40.35" X 1.38"
ULDMENOB34	ULDMEB0B34	31.57" X 41.57"	30" X 40"	29.41" X 39.29"	1800-2100 LUX	17.350 lbs	32.28" X 44.29" X 1.38"

OPTIONAL ACCESSORIES



Optional dimmer to go with LED illuminated frame.. Simply jack the dimmer in frame and then into powersupply. It adjust the light from dark to max lux of LED illuminated frame. / UYUP445550



T: +1 855-478-0652 / info@mtdisplaysllc.com / www.mtdisplaysllc.com

PHYSICAL DATA

Material

Aluminium profile frame with 0.51" depth and LED bulbs, specially treated acrylic clear lens with a magnetic black painted border, acrylic backing.

Poster Material

Translucent poster material should be used for printing the signage.

Surface Finish

Black and natural silver-anodized frame with black border in standard and various RAL colors available. Call for custom color requests.

Recycled Content

Up to 78% recycled content used.

Warranty

All products are guaranteed for 2 years by MT Displays with below conditions:

[Warranty Conditions](#)

Storage Conditions

Goods should be stored at 32°F to 77°F in a dry place. Store in the original package.

Installation Considerations

Magneco LED Box Single Sided is packed with an easy mounting instruction sheet & fixing set. Supplied with Quality Certificates and CE/UL PAT test reports passed. One set includes a single sided frame with 0.51" depth and embedded LED bulbs; specially treated 0.08" acrylic cover with a magnetic black border; 0.12" & 0.16" acrylic backing to diffuse light across graphics; clear clips to hold the poster; 2 wall hangers, 4 screws and 4 anchors for installation; 1 power adapter (12V-2A); 3,5 meter long cable and 1 EU Plug. UK and US plugs are available, should be specified with order. Hidden finger hole to take off the acrylic cover prevents public access to the poster. Has no switch button. Optional dimmer is available. Adjusting the light from dark to max lux of LED illuminated frame. Has a lifespan of more than 60,000 hours when utilized for 7-8 hours a day, seven days a week. For using LED frame 24 hours in 7 days, please ask for special 7/24 power supplies. Keep out of the direct rays of sun. Keep away from fire or severe hot place. Acceptable ambient temperature is max. 95°F.

Design Considerations

Single-sided, wall hanging, edge-lit lightbox with a practical magnetic acrylic lens cover and long lasting LED technology bulbs. One of the slimmest lightboxes in the market with 13mm profile depth. Suitable for INDOOR applications with 11" x 17", 20" x 30", 22" x 28", 24" x 36", 30" x 40" poster sizes in optional portrait and landscape position. High illumination is achieved by improved LED technology and laser surface treatment, giving an impressive effect to grab the passers-by. LED bulbs are not seen from outside, since they are embedded in sides of the frame. LED illumination save up to 60% energy costs (compared to fluorescent technology with an increased life expectancy).

Cleaning and Disinfecting

Clean your displays, with damp microfiber clothes, rinsed with simply water or warm, soapy or gentle shampooed water. Avoid using vinegar, abrasive, acidic, alcohol-based or heavy cleaners or cleaners containing Ammonia. Only after cleaning the product, if needed, simply apply disinfectant or sanitizer that is in compliance with your local guidelines and regulations.

PRINT TEMPLATES

Magneco LEDBox Single Sided - 11"x17"

Document Size: 11.4" x 17.4" (Includes Bleeds)

Finished Size: 11"x17"

Magneco LEDBox Single Sided - 20"x30"

Document Size: 20.4" x 30.4" (Includes Bleeds)

Finished Size: 20"x30"

Magneco LEDBox Single Sided - 22"x28"

Document Size: 22.4" x 28.4" (Includes Bleeds)

Finished Size: 22"x28"

Magneco LEDBox Single Sided - 24"x36"

Document Size: 24.4" x 36.4" (Includes Bleeds)

Finished Size: 24"x36"

Magneco LEDBox Single Sided - 30"x40"

Document Size: 30.4" x 40.4" (Includes Bleeds)

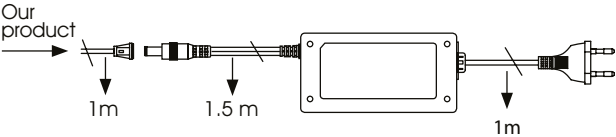
Finished Size: 30"x40"



ILLUMINATED PRODUCTS TECHNICAL MANUAL

POWER SUPPLY

12 V DC
Complete with power supply
2 year guaranteed
7/16 use
If 7/24 use require d, please order individually.



CABLE

Delivered with 3,5 meter long cable and EU plug.
UK, US or CH plugs should be specified with order.
Extension cable: 1 mm, 2 mm, 3 mm.



TECHNICAL SPECIFICATION

SILVER ARTICLE	BLACK ARTICLE	POSTER	ACRYLIC THICKNESS	ILLUMINATION	POWER CONSUMPTION	POWER SUPPLY RECOMMENDED
ULDMEN0BA4	ULDMEB0BA4	210 X 297 mm	3 mm	3000-3600 LUX	7 W / 0.58 A	1 A
ULDMEN0BA3	ULDMEB0BA3	297 X 420 mm	3 mm	3000-3300 LUX	11 W / 0.91 A	1 A
ULDMEN0BA2	ULDMEB0BA2	420 X 594 mm	3 mm	2700-3000 LUX	14 W / 1.16 A	2 A
ULDMEN0BA1	ULDMEB0BA1	594 X 841 mm	4 mm	2300-2600 LUX	21 W / 1.75 A	2 A
ULDMEN0BA0	ULDMEB0BA0	841 X 1189 mm	4 mm	1600-1800 LUX	29 W / 2.4 A	3 A
ULDMEN0BB2	ULDMEB0BB2	500 X 700 mm	3 mm	2200-2500 LUX	17 W / 1.41 A	2 A
ULDMEN0BB1	ULDMEB0BB1	700 X 1000 mm	4 mm	1800-2100 LUX	25 W / 2.08 A	3 A
ULDMEN0B17	ULDMEB0B17	280 X 432 mm	3 mm	2800-3000 LUX	10 W / 0.84 A	1 A
ULDMEN0B22	ULDMEB0B22	559 X 712 mm	3 mm	2000-2200 LUX	17.6 W / 1.5 A	2 A
ULDMEN0B23	ULDMEB0B23	508 X 762 mm	3 mm	2200-2500 LUX	17 W / 1.41 A	2 A
ULDMEN0B24	ULDMEB0B24	610 X 915 mm	4 mm	1900-2100 LUX	22.5 W / 1.9 A	3 A
ULDMEN0B34	ULDMEB0B34	762 X 1016 mm	4 mm	1800-2100 LUX	25 W / 2.08 A	3 A

HANGER



2 wall hangers are standard in each product. Moving hangers let the mounting in portrait and landscape position.

LED FEATURES (Duris E3)

Viewing angle at 50 % IV: 120
Color: 2700 K - 6500 K (warm, neutral and cool white)
CRI: Min. 80
Luminous Flux: Typ. 30 lm @ 5000 K
Luminous efficacy: Typ. 153 lm/W @ 5000 K
Lumen Maintenance: Testing according to IESNA LM-80 in progress
Life Time : 50.000 Hours
Colour: 5700 K -6500 K (White)*
*For special inquired colour is available in 2700 K -6500 K



ASSEMBLY SHEET

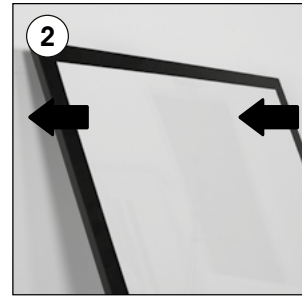
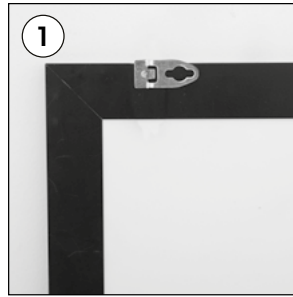


INSTALLATION INSTRUCTIONS

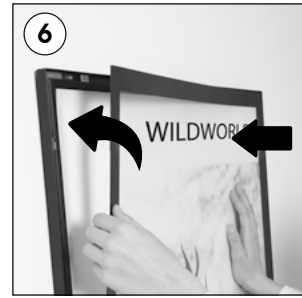
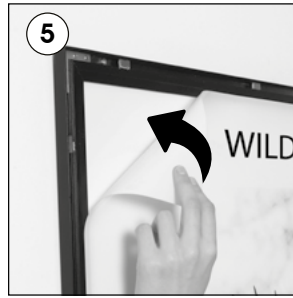
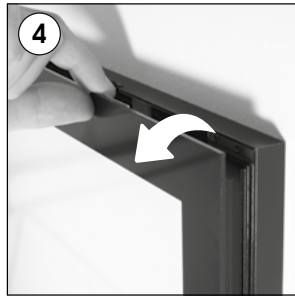
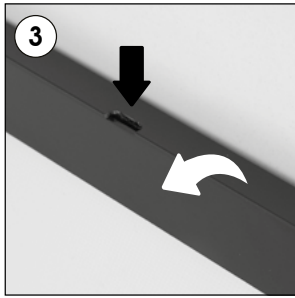
Magneco LEDbox Single Sided / 1009919H000

Each product package includes

- 2 x Hanger
- 4 x Screw
- 4 x Anchor
- 1 x Power Adapter 12V-2A
- 1 x EU Plug



Landscape or portrait positions



Caution !

- 1- Do not step on the light panel nor place the heavy object on the light panel.
- 2- Do not pull the cable with excessive force.
- 3- Use correct capacity and voltage of D.C. power supply.
Failure to observe this instruction could result in breakdown.
- 4- Do not touch the light panel or electrical devices with wet hand.
Failure to observe this instruction could result in electrical shocks and severe injuries.
- 5- Do not subject this light panel to outdoor, high humid and vaporized area.
Failure to observe this instruction could result in breakdown.
- 6- Keep this out of the direct rays of the sun.
Failure to observe this instruction could result in color changes of acrylic plate.
- 7- Keep away from fire or severe hot place. Acceptable ambient temperature is max.35°C
Failure to observe this instruction could result in shorten the life time and degradation of brightness of LED light source.

- Please inform the order number on the product or on the carton (e.g. 1/110001394-460) to the place that you have made the purchase if any problem with the product occurs.
- All rights reserved. All pictures, figures and writings are secured internationally by copy-right law. Infringements will be sued by civil and legal law.

This technical sheet's contents are all subject to update and modification at MT Displays' exclusive discretion. There is nothing official about this document. For final and legally binding information, please get in touch with the sales staff at MT Displays.



T: +1 855-478-0652 / info@mtdisplaysllc.com / www.mtdisplaysllc.com