

## MAGNECO LEDBOX DOUBLE SIDED



### NEW GENERATION AD SIGNS WITH SLIM DESIGN AND HOMOGENOUS ILLUMINATION

Magneco LEDbox: A new generation in LEDboxes. With a practical magnetic protection cover, it is very easy to change the poster. High illumination level attracts consumers to the message. The lightweight Magneco double sided and low voltage requirements allow mounting at any given point with access to a regular electrical outlet.

### KEY SELECTION ATTRIBUTES

- \* Double-sided, ceiling hanging, edge-lit lightbox with practical magnetic acrylic lens covers and long lasting LED technology bulbs.
- \* One of the slimmest double-sided lightboxes in the market with 20mm profile depth.
- \* Suitable for INDOOR applications with 11" x 17", 20" x 30", 22" x 28", 24" x 36", 30" x 40" poster sizes in optional portrait and landscape position.
- \* High illumination is achieved by improved LED technology and laser surface treatment, giving an impressive effect to grab the passers-by.
- \* Translucent poster material should be used for printing the signage.
- \* LED bulbs are not seen from outside, since they are embedded in sides of the frame.
- \* LED illumination save up to 60% energy costs (compared to fluorescent technology with an increased life expectancy).
- \* Supplied with Quality Certificates and CE/UL PAT test reports passed.
- \* Black and natural silver-anodized frame with black border in standard and various RAL colors available.
- \* One set includes a double sided frame with 20mm depth, embedded LED bulbs and grooves on sides for hanging in landscape or portrait positions; specially treated 2mm acrylic covers with magnetic black border; acrylic backings to diffuse light across graphics; 2 ceiling hanger set, 2 wire cables Ø1.5 and 0.08" long, 2 M5 Hangers, 2 screws and 2 anchors for installation; 1 power adapter (12V-2A); 3,5 meter long cable and 1 EU Plug. UK and US plugs are available, should be specified with order.
- \* Hidden finger hole to take off the acrylic covers prevents public access to the poster.
- \* Has no switch button. Optional dimmer is available. Adjusting the light from dark to max lux of LED illuminated frame.
- \* Long-term cost savings can be achieved with Magneco LED box double sided. They have a lifespan of more than 60,000 hours when utilized for 7-8 hours a day, seven days a week.
- \* These illuminated frames are affordable for displaying movie posters, advertisement and translucent posters. For using LED frame 24 hours in 7 days, please ask for special 7/24 power supplies.
- \* Packed with an easy mounting instruction sheet & fixing set.
- \* Keep out of the direct rays of sun. Keep away from fire or severe hot place. Acceptable ambient temperature is max. 95°F.

One product,  
two positions  
(landscape & portrait)



Portrait



Landscape  
hanging  
grooves

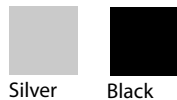


Landscape

Portrait  
hanging  
grooves

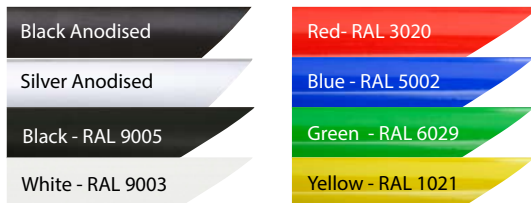


## COLOURS IN STOCK



Silver Black

## COLOUR OPTIONS



## WATCH VIDEO



Watch video at our website  
www.mtdisplaysllc.com

## SUITABLE FOR

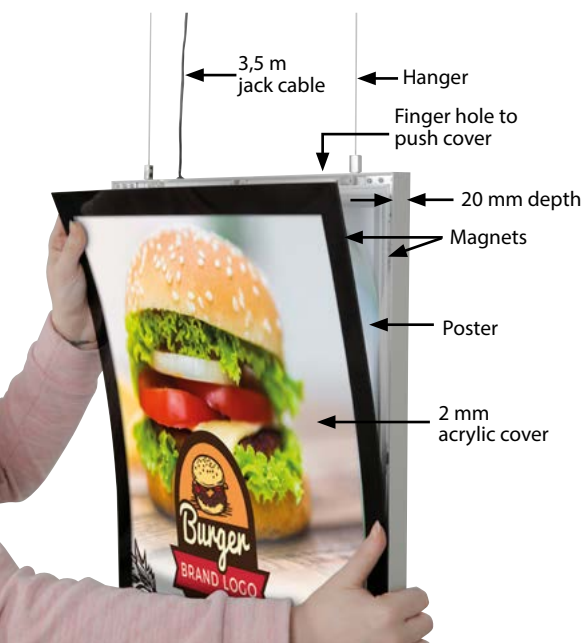
Magneco LED Box Double Sided can be used for a wide range of INDOOR applications, for signage needs in many locations like retail point-of-purchase, tradeshow displays, movie theatres, sports facilities, shopping malls, markets, groceries, hotels, airports, shops and stores, hospitals, restaurants, halls, meeting, rooms, gas stations, casinos, and more.

## FEATURES



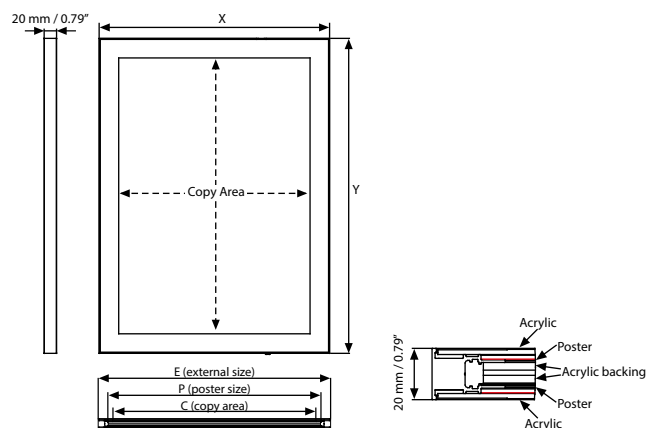
Finger hole to push cover

## EXPLODED VIEW



Standard hanging kit for all sizes: 2 meters x 2 pcs wire cable and 2 ceiling hangers.

## TECHNICAL DRAWING



## ARTICLES

SILVER	BLACK	EXTERNAL (x-y)	POSTER SIZE	COPY	LIGHTING	WEIGHT	PACKING SIZE
						WITH PACKING	*W X H X D
ULDMENCB17	ULDMENCB17	12.60" X 18.58"	11" X 17"	10.31" X 16.30"	2400-2600 LUX	6.459 lbs	13.39" X 21.26" X 1.38"
ULDMENCB22	ULDMENCB22	23.58" X 29.61"	22" X 28"	21.30" X 27.32"	1900-2100 LUX	15.278 lbs	24.41" X 32.28" X 1.38"
ULDMENCB23	ULDMENCB23	21.57" X 31.57"	20" X 30"	23.23" X 29.29"	2000-2200 LUX	15.101 lbs	22.24" X 34.25" X 1.38"
ULDMENCB24	ULDMENCB24	25.59" X 37.60"	24" X 36"	23.31" X 35.31"	1800-2000 LUX	22.068 lbs	26.38" X 40.35" X 1.38"
ULDMENCB34	ULDMENCB34	31.57" X 41.57"	30" X 40"	29.41" X 39.29"	1600-1800 LUX	29.982 lbs	32.28" X 44.29" X 1.38"

## OPTIONAL ACCESSORIES



Optional dimmer to go with LED illuminated frame.. Simply jack the dimmer in frame and then into powersupply. It adjust the light from dark to max lux of LED illuminated frame. / UYUP445550



T: +1 855-478-0652 / info@mtdisplaysllc.com / www.mtdisplaysllc.com

## PHYSICAL DATA

### Material

Aluminium profile frame with 0.79" depth and LED bulbs, specially treated acrylic clear lens with a magnetic black painted border, acrylic backing.

### Poster Material

Translucent poster material should be used for printing the signage.

### Surface Finish

Black and natural silver-anodized frame with black border in standard and various RAL colors available. Call for custom color requests.

### Recycled Content

Up to 78% recycled content used.

### Warranty

All products are guaranteed for 2 years by MT Displays with below conditions:

[Warranty Conditions](#)

### Storage Conditions

Goods should be stored at 32° to 77°F in a dry place. Store in the original package.

### Installation Considerations

Magneco LED Box Double Sided is packed with an easy mounting instruction sheet & fixing set. Supplied with Quality Certificates and CE/UL PAT test reports passed. One set includes a double sided frame with 20mm depth, embedded LED bulbs and grooves on sides for hanging in landscape or portrait positions; specially treated 2mm acrylic covers with magnetic black border; acrylic backings to diffuse light across graphics; 2 ceiling hanger set, 2 wire cables Ø1.5 and 2m long, 2 M5 Hangers, 2 screws and 2 anchors for installation; 1 power adapter (12V-2A); 3,5 meter long cable and 1 EU Plug. UK and US plugs are available, should be specified with order. Hidden finger hole to take off the acrylic cover prevents public access to the poster. Has no switch button. Optional dimmer is available. Adjusting the light from dark to max lux of LED illuminated frame. Has a lifespan of more than 60,000 hours when utilized for 7-8 hours a day, seven days a week. For using LED frame 24 hours in 7 days, please ask for special 7/24 power supplies. Keep out of the direct rays of sun. Keep away from fire or severe hot place. Acceptable ambient temperature is max. 95 °F.

### Design Considerations

Double-sided, ceiling hanging, edge-lit lightbox with practical magnetic acrylic lens covers and long lasting LED technology bulbs. One of the slimmest double-sided lightboxes in the market with 20mm profile depth. Suitable for INDOOR applications with 11" x 17", 20" x 30", 22" x 28", 24" x 36", 30" x 40" poster sizes in optional portrait and landscape position. High illumination is achieved by improved LED technology and laser surface treatment, giving an impressive effect to grab the passers-by. LED bulbs are not seen from outside, since they are embedded in sides of the frame. LED illumination save up to 60% energy costs (compared to fluorescent technology with an increased life expectancy).

### Cleaning and Disinfecting

Clean your displays, with damp microfiber clothes, rinsed with simply water or warm, soapy or gentle shampooed water. Avoid using vinegar, abrasive, acidic, alcohol-based or heavy cleaners or cleaners containing Ammonia. Only after cleaning the product, if needed, simply apply disinfectant or sanitizer that is in compliance with your local guidelines and regulations.

## PRINT TEMPLATES

### Magneco LEDBox Double Sided - 11"x17"

Document Size: 11.4" x 17.4" (Includes Bleeds)

Finished Size: 11"x17"

### Magneco LEDBox Double Sided - 20"x30"

Document Size: 20.4" x 30.4" (Includes Bleeds)

Finished Size: 20"x30"

### Magneco LEDBox Double Sided - 22"x28"

Document Size: 22.4" x 28.4" (Includes Bleeds)

Finished Size: 22"x28"

### Magneco LEDBox Double Sided - 24"x36"

Document Size: 24.4" x 36.4" (Includes Bleeds)

Finished Size: 24"x36"

### Magneco LEDBox Double Sided - 30"x40"

Document Size: 30.4" x 40.4" (Includes Bleeds)

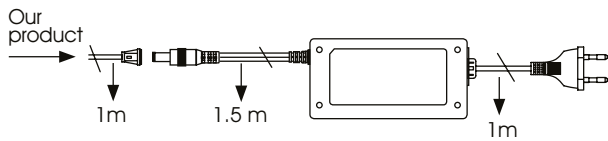
Finished Size: 30"x40"



# ILLUMINATED PRODUCTS TECHNICAL MANUAL

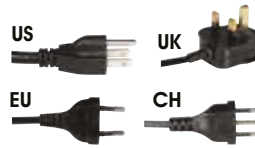
## POWER SUPPLY

12 V DC  
Complete with power supply  
2 year guaranteed  
7/16 use  
If 7/24 use require d, please order individually.



## CABLE

Delivered with 3,5 meter long cable and EU plug. UK, US or CH plugs should be specified with order. Extension cable: 1 mm, 2 mm, 3 mm.



## HANGER



2 wall hangers are standard in each product. Moving hangers let the mounting in portrait and landscape position.

## TECHNICAL SPECIFICATION

SILVER ARTICLE	BLACK ARTICLE	POSTER	ACRYLIC THICKNESS	ILLUMINATION	POWER CONSUMPTION	POWER SUPPLY RECOMMENDED
ULDMENCB4	ULDMENCB4	210 X 297 mm	3 mm	2800-3000 LUX	9.5 W / 0.79 A	1 A
ULDMENCB3	ULDMENCB3	297 X 420 mm	3 mm	2400-2600 LUX	14 W / 1.15 A	2 A
ULDMENCB2	ULDMENCB2	420 X 594 mm	3 mm	2100-2300 LUX	20 W / 1.66 A	2 A
ULDMENCB1	ULDMENCB1	594 X 841 mm	4 mm	1800-2000 LUX	28.5 W / 2.38 A	3 A
ULDMENCB0	ULDMENCB0	841 X 1189 mm	4 mm	1200-1400 LUX	40.5 W / 3.39 A	4 A
ULDMENCB2	ULDMENCB2	500 X 700 mm	3 mm	2000-2200 LUX	24 W / 2 A	3 A
ULDMENCB1	ULDMENCB1	700 X 1000 mm	4 mm	1600-1800 LUX	35 W / 2.9 A	4 A
ULDMENCB17	ULDMENCB17	280 X 432 mm	3 mm	2400-2600 LUX	16.6 W / 1.22 A	2 A
ULDMENCB22	ULDMENCB22	559 X 712 mm	4 mm	1900-2100 LUX	24 W / 2 A	3 A
ULDMENCB23	ULDMENCB23	508 X 762 mm	3 mm	2000-2200 LUX	26 W / 2.16 A	3 A
ULDMENCB24	ULDMENCB24	610 X 915 mm	4 mm	1800-2000 LUX	31 W / 2.6 A	3 A
ULDMENCB34	ULDMENCB34	762 X 1016 mm	4 mm	1600-1800 LUX	36 W / 3.02 A	4 A

## LED FEATURES (Duris E3)

**Viewing angle at 50 % IV:** 120

**Color:** 2700 K - 6500 K (warm, neutral and cool white)

**CRI:** Min. 80

**Luminous Flux:** Typ. 30 lm @ 5000 K

**Luminous efficacy:** Typ. 153 lm/W @ 5000 K

**Lumen Maintenance:** Testing according to IESNA LM-80 in progress

**Life Time :** 50.000 Hours

Colour: 5700 K -6500 K (White)\*

\*For special inquired colour is available in 2700 K -6500 K



## ASSEMBLY SHEET



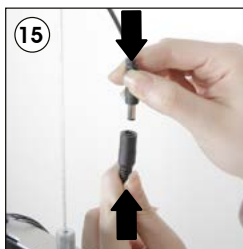
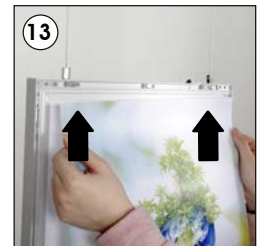
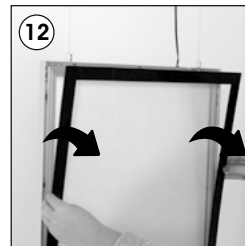
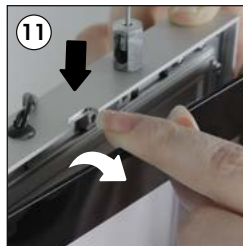
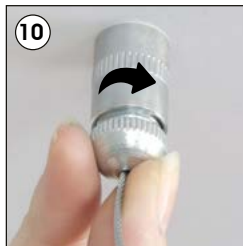
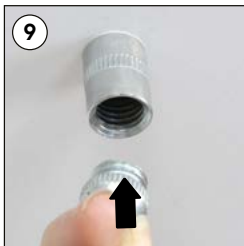
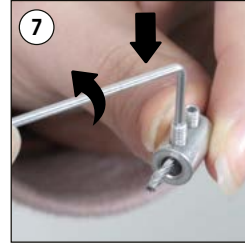
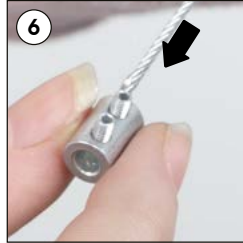
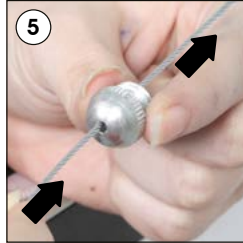
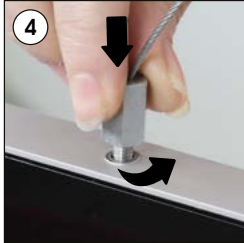
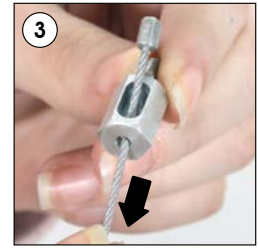
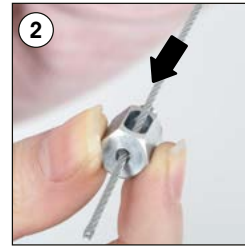
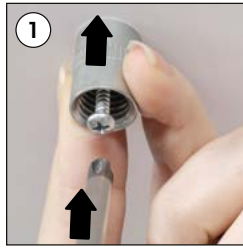


# INSTALLATION INSTRUCTIONS

## Magneco LEDbox Double Sided / 1010093H000

### Each product package includes

- 1 x Eu plug
- 2 x Ceiling hanger set
- 2 x Wire cable Ø1.5, 2000mm
- 2 x Hanger M5
- 2 x Screw
- 2 x Anchor
- 1 x Power supply 12V-2A Fullpower - 2018



### Caution !

- 1- Do not step on the light panel nor place the heavy object on the light panel.
- 2- Do not pull the cable with excessive force.
- 3- Use correct capacity and voltage of D.C. power supply. Failure to observe this instruction could result in breakdown.
- 4- Do not touch the light panel or electrical devices with wet hand. Failure to observe this instruction could result in electrical shocks and severe injuries.
- 5- Do not subject this light panel to outdoor, high humid and vaporized area. Failure to observe this instruction could result in breakdown.
- 6- Keep this out of the direct rays of the sun. Failure to observe this instruction could result in color changes of acrylic plate.
- 7- Keep away from fire or severe hot place. Acceptable ambient temperature is max.35°C Failure to observe this instruction could result in shorten the life time and degradation of brightness of LED light source.

- Please inform the order number on the product or on the carton (e.g. 1/110001394-460) to the place that you have made the purchase if any problem with the product occurs.
- All rights reserved. All pictures, figures and writings are secured internationally by copy-right law. Infringements will be sued by civil and legal law.



This technical sheet's contents are all subject to update and modification at MT Displays' exclusive discretion. There is nothing official about this document. For final and legally binding information, please get in touch with the sales staff at MT Displays.



T: +1 855-478-0652 / info@mtdisplaysllc.com / www.mtdisplaysllc.com