

LOCKABLE SNAP FRAME



ENSURE YOUR POSTERS ARE NEVER ACCESSED BY UNAUTHORIZED PARTIES

The lockable poster frame is simple to use with flip open sides. The four sides of the lockable frame open sequentially. The last profile is held in place with a screw on top that can be opened with its key. All you need to do is unlock the frame with the special allen key that is included with the product and snap open all four sides. Then you can place your printed poster and the plastic, clear non-glare cover over it and snap close. It only takes seconds to update your printed posters. This system ensures your poster is never accessed by unauthorized third parties. Clear, plastic, non-glare cover prevents glare as well as keeps your poster away from dust and dirt.

KEY SELECTION ATTRIBUTES

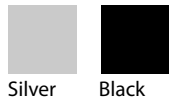
- Ideal for various poster sizes.
- Natural silver-anodized and various RAL colors available with antimicrobial powder coating.
- Standard mitred corners.
- Secured with an Allen Key.
- One allen key locks one side of frame and interlocks 3 sides.
- Optional V-Hangers for easy mounting.



Silver Anodised, mitred

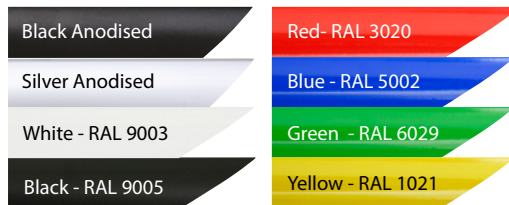


COLOURS IN STOCK



Silver Black

COLOUR OPTIONS



CORNER TYPES



SUITABLE FOR

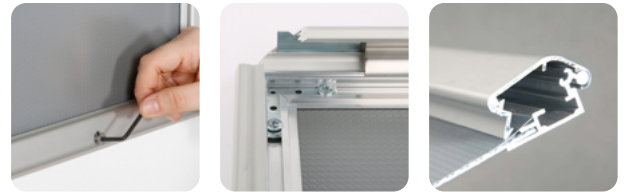
Lockable Snap Frame can be used for INDOOR applications, for signage needs in many locations like shopping centers, markets, groceries, hotels, offices airports, shops and stores, hospitals, schools, apartments, museums, restaurants and many more.

WATCH VIDEO

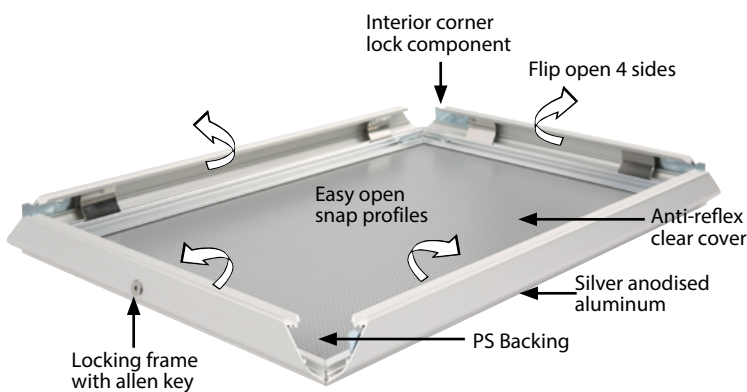


Watch video at our website
www.mtdisplays.com

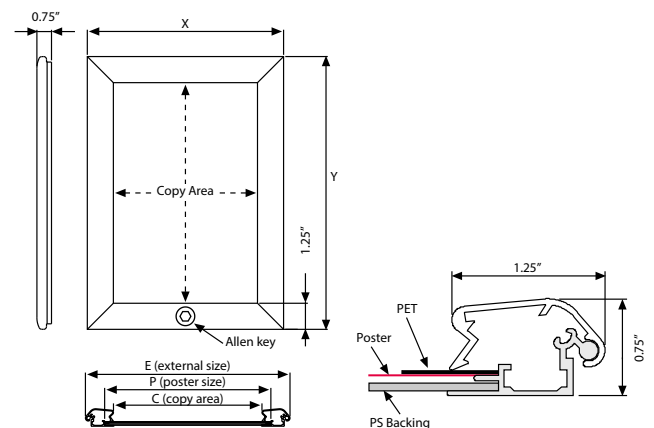
FEATURES



EXPLODED VIEW



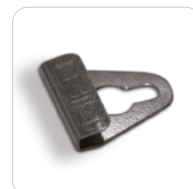
TECHNICAL DRAWING



ARTICLES

ARTICLE	EXTERNAL (x-y)	POSTER	COPY	WEIGHT	PACKING SIZE
				WITH PACKING	*W X H X D
UCL325N018	19.72" X 25.71"	18" X 24"	17.24" X 23.23"	3.306 lbs	20.47" X 26.38" X 1.22"
UCL325N022	23.70" X 29.69"	22" X 28"	21.22" X 27.20"	5.732 lbs	24.41" X 30.71" X 1.22"
UCL325N024	25.71" X 37.68"	24" X 36"	23.23" X 35.20"	5.621 lbs	27.17" X 38.58" X 1.22"

OPTIONAL ACCESSORIES



V Hanger / UYAA011010

PHYSICAL DATA

Material

1.25" aluminum profiles.
PET poster cover, PS backing or ABS backing.

Poster Material & Thickness

0.0039" – 0.0078" for standard product. Max poster thickness is 0.078". Any non-standard poster thicknesses should be indicated with order.

Surface Finish

Silver anodized or black colour, antimicrobial powder coating. Custom colors also available, call for custom color requests.

Recycled Content

Up to 78% recycled content used.

Warranty

All products are guaranteed for 3 years by MT Displays with below conditions:

[Warranty Conditions](#)

Installation Considerations

Each frame includes an allen key to open the locked profile. Each frame includes wall fixing (4 screws & 4 plugs). 'Optional hangers' permit easy mounting.

Design Considerations

Suitable for silk screen printing, max. letter height is 0.62".

Cleaning and Disinfecting

Clean your displays, with damp microfiber clothes, rinsed with simply water or warm, soapy or gentle shampooed water. Avoid using vinegar, abrasive, acidic, alcohol-based or heavy cleaners or cleaners containing Ammonia. Only after cleaning the product, if needed, simply apply disinfectant or sanitizer that is in compliance with your local guidelines and regulations.



T: +1 855-478-0652 / info@mtdisplaysllc.com / www.mtdisplaysllc.com

PRINT TEMPLATES

Lockable Snap Frame 1.25" - 18"x24"

Document Size: 18.4" x 24.4" (Includes Bleeds)

Finished Size: 18"x24" (457.2x609.6 mm)

Lockable Snap Frame 1.25" - 20"x30"

Document Size: 20.4" x 30.4" (Includes Bleeds)

Finished Size: 20"x30" (508x762 mm) [Print](#)

Lockable Snap Frame 1.25" - 22"x28"

Document Size: 22.4" x 28.4" (Includes Bleeds)

Finished Size: 22"x28" (558.8x711.1 mm)

Lockable Snap Frame 1.25" - 24"x36"

Document Size: 24.4" x 36.4" (Includes Bleeds)

Finished Size: 24"x36" (609.6x914.4 mm)

Lockable Snap Frame 1.25" - 30"x40"

Document Size: 30.4" x 40.4" (Includes Bleeds)

Finished Size: 30"x40" (762x1016 mm) [Print](#)

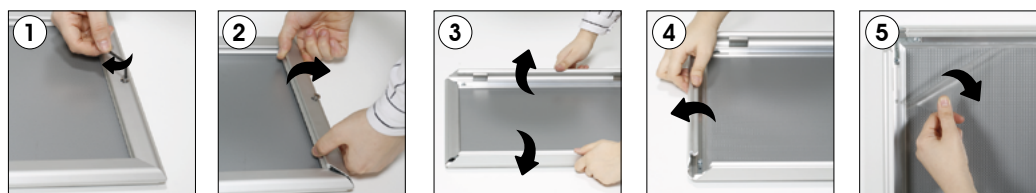
Lockable Snap Frame 1.25" - 40"x60"

Document Size: 40.4" x 60.4" (Includes Bleeds)

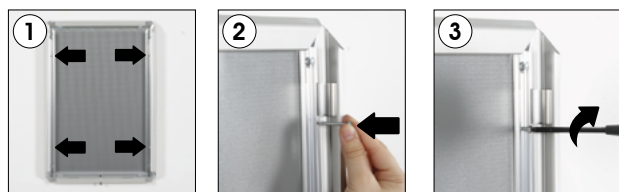
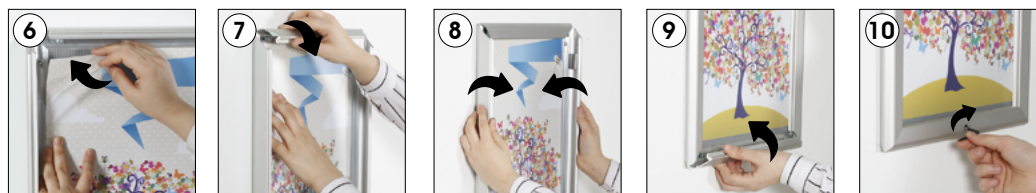
Finished Size: 40"x60" (1016x1524 mm) [Print](#)

INSTALLATION INSTRUCTIONS

Lockable Snap Frame / 1001863



Allen key to open the locked profile.



Screw & anchor mounting

Each frame includes wall mounting accessories (4 screws & 4 anchors) and allen key



- Please inform the order number on the product or on the carton (e.g. 1/110001394-460) to the place that you have made the purchase if any problem with the product occurs.
- All rights reserved. All pictures, figures and writings are secured internationally by copy-right law. Infringements will be sued by civil and legal law.

This technical sheet's contents are all subject to update and modification at MT Displays' exclusive discretion. There is nothing official about this document. For final and legally binding information, please get in touch with the sales staff at MT Displays.



T: +1 855-478-0652 / info@mtdisplaysllc.com / www.mtdisplaysllc.com