

GULF MAXI SINGLE SIDED

MAXI
frame



FRAMELESS LOOKING DESIGN FOR BIG FABRIC POSTERS!

It offers a fresh new look to today's display atmosphere which is an alternative to frame systems, Banners, Pop-Ups by applying a printed fabric's installation into the Maxi profile with a sewed or taped nylon strip. The product is a stunning combination of Aluminum and Digital Printing Machines where they unite with a fabric. The attractive point of the product is when it is looked at the front side, you are unable to see the Aluminium Parts of the frame which makes it look frameless.

KEY SELECTION ATTRIBUTES

- * A very new and fresh looking, single-sided, wall hanging, Gulf Maxi Frame system, combining aluminium Dame Profile and sewed or nylon strip for application of big sizes of printed fabric posters.
- * One of the most attractive frame designs in the market with frameless look when viewed from the front side.
- * Suitable for INDOOR applications with 40" X 60", 40" X 80", 47" X 118", 80" X 118" poster sizes in portrait and landscape position.
- * Gulf Maxi Frames can be ordered in standard sizes. They can also be ordered in special lengths and parts as semi products.
- * Natural silver-anodized in standard and various RAL colors available with antimicrobial powder coating. Subject to MOQ.
- * One set includes a single sided 1.26" Dame Profile frame with 1.34" depth and 0.16" thickness; H-profile for 1000mm and more wider frame sizes; 0.12" clear nylon strips; corner connectors and cleats for connecting H-profile.
- * Hang by using the assembling holes.
- * Fabric is not included in the original pack.
- * Recommended fabric thickness for digital printing is 0.2". Thickness of the profile is 0.16". Thickness of nylon strip is 0.12". The pull sticker in 0.5mm thickness must be sewed on the fabric to take out the poster from channels.
- * 13mm on each side of the fabric into Maxi Profiles (in total 1.02" on each Fabric Poster) is not seen on the poster. Please arrange accordingly.
- * Additional print shares suggested for Maxi Frame's Fabric Posters: 1.1" between 7.87"x29.53", 20mm between 29.53"-59.06", 0.59" between 59.06"-118.11". These values might vary according to the fabric used.
- * Profiles and connector parts for the required sizes are packed unassembled in a single box with an easy mounting instruction sheet. The profile edges are connected by allen key. Fixing tools are included in each frame.



COLOURS IN STOCK



Silver

SUITABLE FOR

Gulf Maxi Single Sided can be used for INDOOR applications, for signage needs in many locations like shopping centers, markets, groceries, hotels, offices airports, shops and stores, hospitals, schools, apartments, banks, car dealers, restaurants, telecom companies, insurance companies, libraries, museums, travel agencies and many more.

WATCH VIDEO

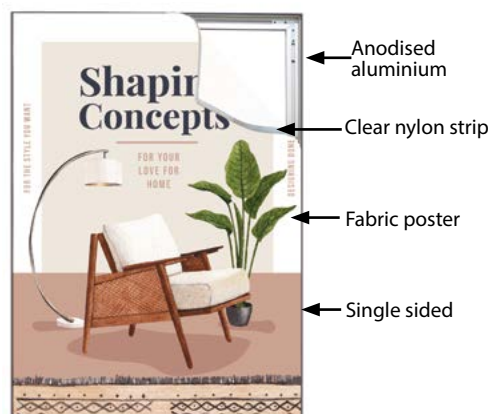


Watch video at our website
www.mtdisplaysllc.com

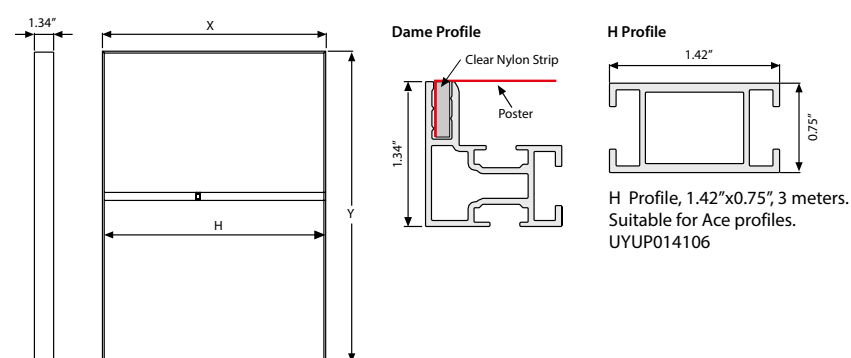
FEATURES



EXPLODED VIEW



TECHNICAL DRAWING



Application of nylon strip by sew-on process



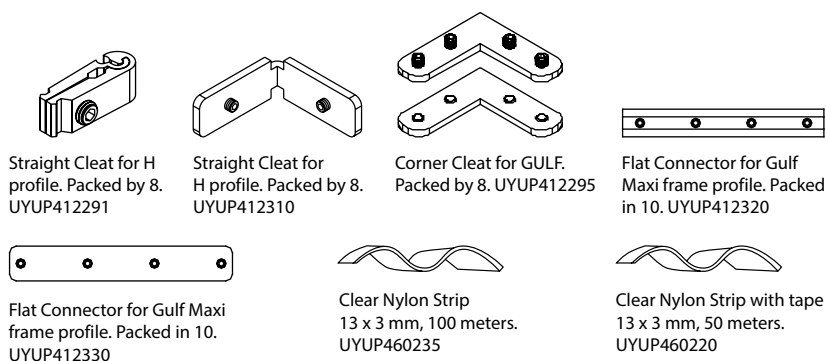
Application of nylon strip by double sided tape



ARTICLES

ARTICLE	EXTERNAL (x-y)	H (mm)	H (Pcs)	WEIGHT	PACKING SIZE
				WITH PACKING	*W X H X D
UMFG004060	40" X 60"	-	-	8.267 lbs	4.33" X 62.01" X 2.36"
UMFG004080	40" X 80"	-	-	9.479 lbs	4.33" X 81.89" X 2.36"
UMFG004718	47" X 118"	49.53"	1	17.636 lbs	4.33" X 120.08" X 2.36"
UMFG008018	80" X 118"	77.48"	1	24.691 lbs	4.33" X 120.08" X 2.36"

COMPONENTS OF MAXI FRAMES



T: +1 855-478-0652 / info@mtdisplaysllc.com / www.mtdisplaysllc.com

PHYSICAL DATA

Material

1.18" aluminium profile frame with 1.34" depth, 1.42"x0.75" aluminium H-profile, clear nylon strips, metal corner connectors and cleats.

Surface Finish

Natural silver-anodized in standard and various RAL colors available with antimicrobial powder coating. Subject to MOQ. Call for custom color requests.

Storage Conditions

Goods should be stored at 32°F to 77°F in a dry place. Store in the original package.

Recycled Content

Up to 78% recycled content used.

Warranty

All products are guaranteed for 2 years by MT Displays with below conditions:

[Warranty Conditions](#)

Poster Material & Thickness

Recommended fabric thickness for digital printing is 0.02". Thickness of the channel is 0.16". Thickness of nylon strip is 0.12". The pull sticker in 0.02" thickness must be sewed on the fabric to take out the poster from channels.

Installation Considerations

Hang by using the assembling holes. The profile edges have corner cleats and are connected by allen key. For larger sizes of Gulf Maxi Frame, H-Profile is included in the pack with the quantities shown in the table. The thickness of the profile is 0.16". Supplied nylon strip is 0.12", so recommended fabric thickness for digital printing is 0.02". The pull sticker in 0,5 mm thickness must be sewed on the fabric for taking out the poster when fitted into the channels. 0.51" on each side of the fabric is fitted into Maxi Profiles, so 1.02" on each Fabric Poster is not seen on the poster. Please arrange accordingly. Fabric is not included within the original pack.

Design Considerations

A very new and fresh looking, single-sided, wall hanging, Gulf Maxi Frame system, combining aluminium Dame Profile and sewed or nylon strip for application of big sizes of printed fabric posters. One of the most attractive frame designs in the market with frameless look when viewed from the front side. Suitable for INDOOR applications with 40" X 60", 40" X 80", 47" X 118", 80" X 118" poster sizes in portrait and landscape position.

Cleaning and Disinfecting

Clean your displays, with damp microfiber clothes, rinsed with simply water or warm, soapy or gentle shampooed water. Avoid using vinegar, abrasive, acidic, alcohol-based or heavy cleaners or cleaners containing Ammonia. Only after cleaning the product, if needed, simply apply disinfectant or sanitizer that is in compliance with your local guidelines and regulations.

PRINT TEMPLATES

Gulf Maxi - 40"x60"

Document Size: 42.36" x 62.36" (Includes Bleeds)

Finished Size: 40"x60"

Gulf Maxi - 40"x80"

Document Size: 42.36" x 82.36" (Includes Bleeds)

Finished Size: 40"x80"

Gulf Maxi - 47"x118"

Document Size: 49.36" x 120.36" (Includes Bleeds)

Finished Size: 47"x118"

Gulf Maxi - 80"x118"

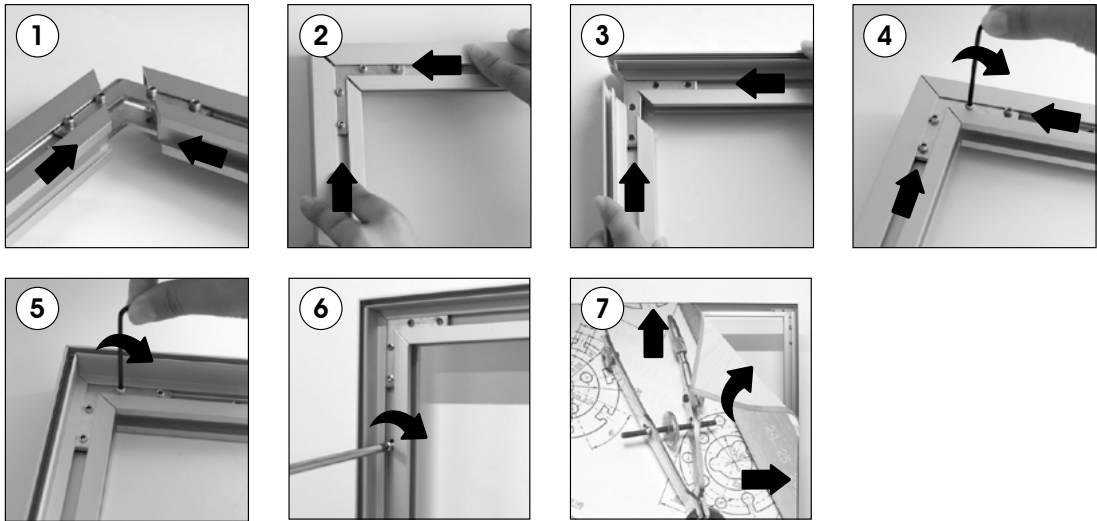
Document Size: 82.36" x 120.36" (Includes Bleeds)

Finished Size: 80"x118"

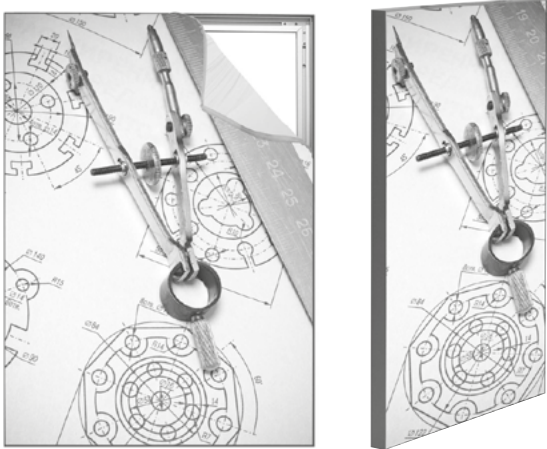
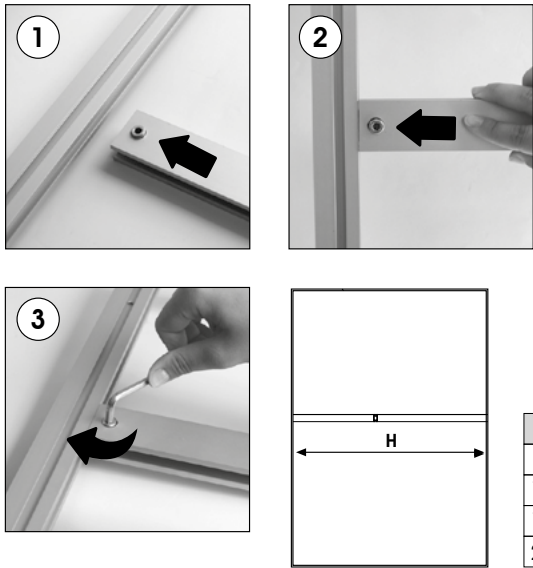


INSTALLATION INSTRUCTIONS

Dame Profile / Gulf Maxi / 1004753



Assembly of H profile



Assembly of H profile		
Poster	H (Size)	H (Pcs)
1000 X 3000 mm	910 mm	1
1500 X 3000 mm	1410 mm	1
2000 X 3000 mm	1910 mm	2

- Please inform the order number on the product or on the carton (e.g. 1/110001394-460) to the place that you have made the purchase if anyproblem with the product occurs.
- All rights reserved. All pictures, figures and writings are secured internationally by copy-right law. Infringements will be sued by civil and legal law.

This technical sheet's contents are all subject to update and modification at MT Displays' exclusive discretion. There is nothing official about this document. For final and legally binding information, please get in touch with the sales staff at MT Displays.

