

## FELT SHOWBOARD



## OUTDOOR FRIENDLY BOARDS FOR YOUR ADS, ANNOUNCEMENTS AND NOTES

Suitable for outdoor use. It has a felt board that welcomes both Velcro and pins. Each unit includes a free set of pins. Single key 4x(8.5"x11"), double key 6x(8.5"x11"), 9x(8.5"x11") and 12x(8.5"x11") sizes are available and can be used both in portrait & landscape positions. The cover can be opened to 90 degrees. Each unit includes mounting screw and plugs for easy wall mounting and a free set of pins. The profile width is 1.77" and the depth of the case 1.41".

### KEY SELECTION ATTRIBUTES

- \* OUTDOOR FRIENDLY, wall-mounting and lockable showboards with felt that accepts use of Velcro and pins.
- \* Suitable for wall mounting with single key 4x(8.5"x11"), double key 6x6x(8.5"x11"), 9x(8.5"x11") and 12x(8.5"x11") paper capacity sizes in landscape or portrait positions.
- \* Perfect way to offer multiple services, present/change messages, announcements or promotions at offices, hospitals, schools and more.
- \* Choice of 3 felt colours: Pantone 429 C Gray, 286 C Blue, 3425 C Green.
- \* Natural silver anodised aluminium frame and PET-G cover in standard.
- \* One set includes 45mm natural silver anodised aluminium lockable frame with

- 36mm depth, galvanised backing, PET-G protective cover, 2 stays at each end to keep the cover door open, inner felt board for pinnig and changing notes easily, 2 keys, 4 screws and 4 anchors for installing on wall.
- \* Each product includes 1 key set of single variation.
- \* Lockable cover can be opened to 90 degrees.
- \* Each unit includes a free set of pins.
- \* Each unit is packed in an individual box with mounting set and easy-to-understand installation sheet.
- \* Please discard the protective film on the unit before use.



Blue

Gray



Green



## COLOURS IN STOCK



Gray  
Pantone  
429 C



Blue  
Pantone  
286 C



Green  
Pantone  
3425 C

## SUITABLE FOR

Felt Showboards are OUTDOOR FRIENDLY, they can be used for signage needs in many locations like shopping centers, markets, groceries, hotels, offices airports, shops and stores, hospitals, schools, apartments, banks, car dealers, restaurants, telecom companies, insurance companies, libraries, museums, travel agencies and many more.

## WATCH VIDEO

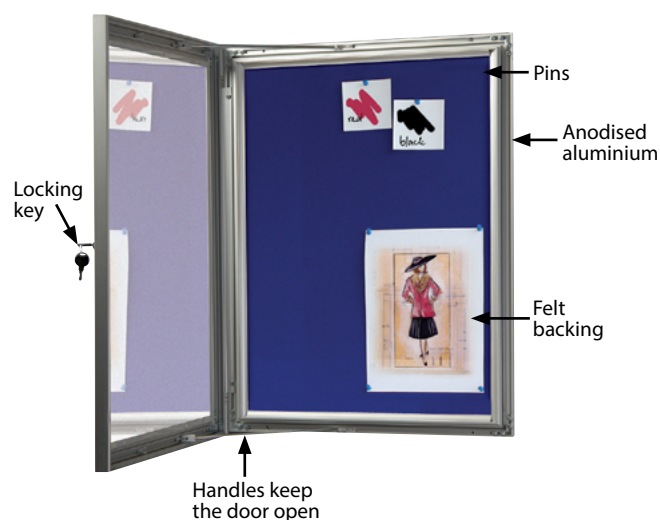


Watch video at our website  
[www.mttdisplayslc.com](http://www.mttdisplayslc.com)

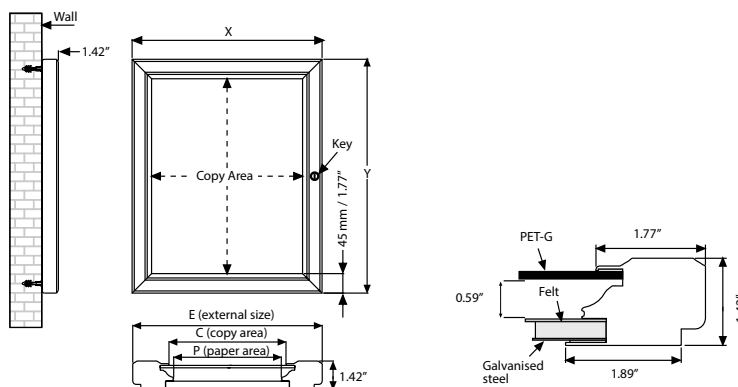
## FEATURES



## EXPLODED VIEW



## TECHNICAL DRAWING



## ARTICLES

| RED        | BLUE       | GRAY       | GREEN      | EXTERNAL (x-y)  | COPY            | PAPER AREA      | CAPACITY          | KEY | WEIGHT       |  | PACKING SIZE            |              |
|------------|------------|------------|------------|-----------------|-----------------|-----------------|-------------------|-----|--------------|--|-------------------------|--------------|
|            |            |            |            |                 |                 |                 |                   |     | WITH PACKING |  | *W X H X D              |              |
| USBN1104A4 | USBN1204A4 | USBN1404A4 | USBN1304A4 | 23.03" X 29.72" | 19.49" X 26.18" | 19.02" X 25.71" | 4 X (8.5" X 11")  | 1   | 18.629 lbs   |  | 24.41" X 30.71" X 2.36" | 4(8.5"x11")  |
| USBN1106A4 | USBN1206A4 | USBN1406A4 | USBN1306A4 | 23.03" X 42.32" | 19.49" X 38.78" | 19.02" X 38.31" | 6 X (8.5" X 11")  | 2   | 22.928 lbs   |  | 24.41" X 43.31" X 2.36" | 6(8.5"x11")  |
| USBN1109A4 | USBN1209A4 | USBN1409A4 | USBN1309A4 | 32.09" X 42.32" | 28.54" X 38.78" | 28.07" X 38.31" | 9 X (8.5" X 11")  | 2   | 31.085 lbs   |  | 33.46" X 43.31" X 2.36" | 9(8.5"x11")  |
| USBN1112A4 | USBN1212A4 | USBN1412A4 | USBN1312A4 | 41.14" X 42.32" | 37.60" X 38.78" | 37.13" X 38.31" | 12 X (8.5" X 11") | 2   | 39.683 lbs   |  | 42.52" X 43.31" X 2.36" | 12(8.5"x11") |

Size of boards for all Showboard models:

| 4(8.5"x11") |            | 6(8.5"x11") |            | 9(8.5"x11") |            | 12(8.5"x11") |            |
|-------------|------------|-------------|------------|-------------|------------|--------------|------------|
| (8.5"x11")  | (8.5"x11") | (8.5"x11")  | (8.5"x11") | (8.5"x11")  | (8.5"x11") | (8.5"x11")   | (8.5"x11") |
| (8.5"x11")  | (8.5"x11") | (8.5"x11")  | (8.5"x11") | (8.5"x11")  | (8.5"x11") | (8.5"x11")   | (8.5"x11") |
| (8.5"x11")  | (8.5"x11") | (8.5"x11")  | (8.5"x11") | (8.5"x11")  | (8.5"x11") | (8.5"x11")   | (8.5"x11") |
| (8.5"x11")  | (8.5"x11") | (8.5"x11")  | (8.5"x11") | (8.5"x11")  | (8.5"x11") | (8.5"x11")   | (8.5"x11") |

## PHYSICAL DATA

### Material

1.77" aluminium profiles with 1.41" depth, galvanised steel backing, felt board and PET-G protective cover.

### Surface Finish

Natural silver anodised aluminium frame and PET-G protective cover in standard. Choice of 4 felt colours: Pantone 429 C Gray, 286 C Blue, 3425 C Green.

### Recycled Content

Up to 78% recycled content used.

### Warranty

All products are guaranteed for 3 years by MT Displays with below conditions:

[Warranty Conditions](#)

### Storage Conditions

Goods should be stored at 32°F to 77°F in a dry place. Store in the original package.

### Installation Considerations

Felt Showboards are packed with mounting set and easy-to-understand installation sheet. One set includes 1.77" natural silver anodised aluminium lockable frame with 1.41" depth, galvanised backing, PET-G protective cover, 2 stays at each end to keep the cover door open, inner felt board for pinning and changing notes easily, 2 keys, 4 screws and 4 anchors for installing on wall. Each product includes 1 key set of single variation. Lockable cover can be opened to 90 degrees. Each unit includes a free set of pins. Please discard the protective film on the unit before use.

### Design Considerations

OUTDOOR FRIENDLY, wall-mounting and lockable showboards with felt that accepts use of Velcro and pins. Suitable for wall mounting with single key 4x(8.5"x11"), double key 6x6x(8.5"x11"), 9x(8.5"x11") and 12x(8.5"x11") paper capacity sizes in landscape or portrait positions. Perfect way to offer multiple services, present/change messages, announcements or promotions at offices, hospitals, schools and more.

### Cleaning and Disinfecting

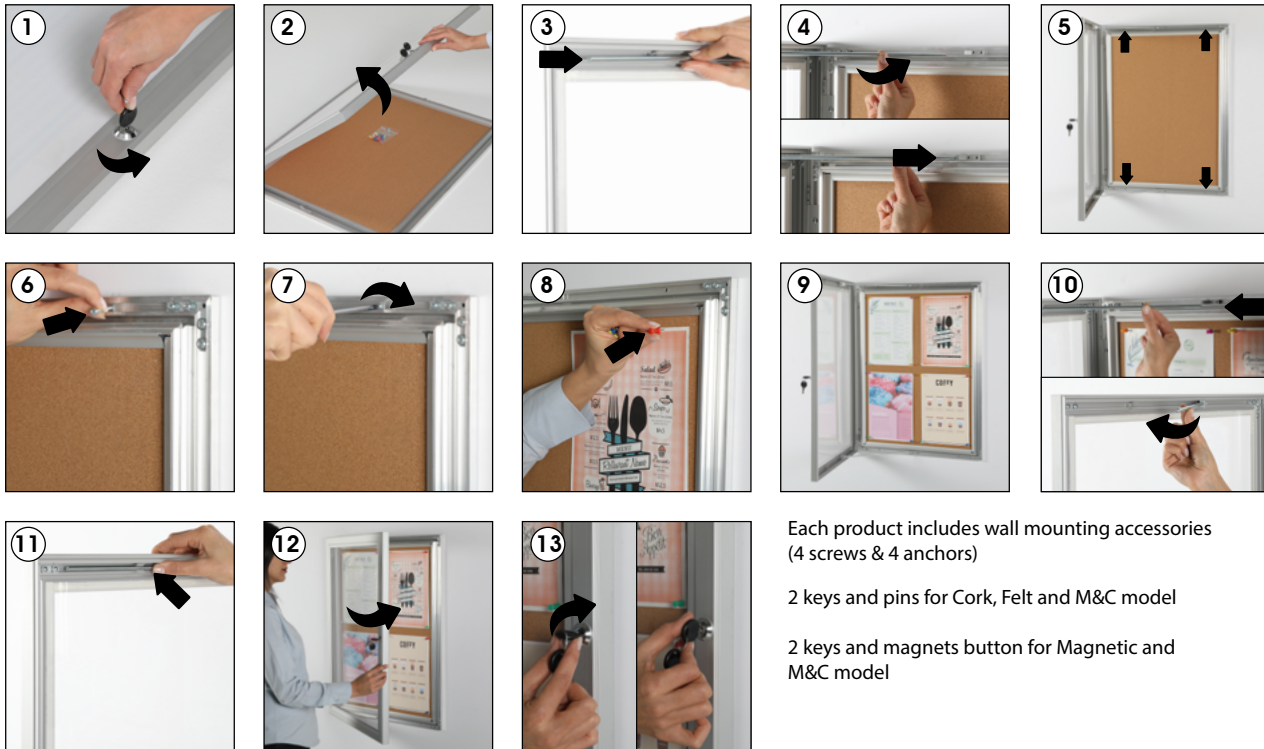
Clean your displays, with damp microfiber clothes, rinsed with simply water or warm, soapy or gentle shampooed water. Avoid using vinegar, abrasive, acidic, alcohol-based or heavy cleaners or cleaners containing Ammonia. Only after cleaning the product, if needed, simply apply disinfectant or sanitizer that is in compliance with your local guidelines and regulations.



T: +1 855-478-0652 / [info@mttdisplayslc.com](mailto:info@mttdisplayslc.com) / [www.mttdisplayslc.com](http://www.mttdisplayslc.com)

# INSTALLATION INSTRUCTIONS

## Felt Showboard



Showboard with Magnetic



Magnetic Showboard



M&C Showboard



Felt Showboard

- Please inform the order number on the product or on the carton (e.g. 1/110001394-460) to the place that you have made the purchase if any problem with the product occurs.
- All rights reserved. All pictures, figures and writings are secured internationally by copy-right law. Infringements will be sued by civil and legal law.

This technical sheet's contents are all subject to update and modification at MT Displays' exclusive discretion. There is nothing official about this document. For final and legally binding information, please get in touch with the sales staff at MT Displays.



T: +1 855-478-0652 / [info@mtdisplaysllc.com](mailto:info@mtdisplaysllc.com) / [www.mtdisplaysllc.com](http://www.mtdisplaysllc.com)