

ECO WATERBASE WINDSIGN



COST-SAVING HEAVY-BASE SIDEWALK SIGNS WITH FLEXIBLE SPRING DESIGN

Various sizes are available all with safe mitred corners. Its round corners do not have sharp edges. After the closure of the side profiles, the rubber seal in addition with over size PET makes the product waterproof. The easy-to-open snap frame includes an anti-reflex cover. The steel springs provide the flexibility to ensure stability. The wheels ensure the movement of the unit. Product is double sided.

KEY SELECTION ATTRIBUTES

- * Double-sided Pavement Sign with heavy waterbase and steel spring design for flexibility and stability.
- * Suitable for various poster sizes, available with round mitred corners for safety.
- * Wind Resistant: Suitable for windy outdoor conditions.
- * Weatherproof IP56: Suitable for rainy conditions with over size anti-reflex PET and a rubber seal around the frame for protecting the poster within.
- * One set includes a double sided snap open swing master frame, 2 anti-reflex poster covers, 1 PP backing, heavy waterbase with wheels, 2 nuts for installation.
- * For optional header use, header enabled frames must be ordered. Optional carry tool is available.
- * The wheels ensure the movement of the unit.
- * Natural silver-anodized, black in standard and various RAL colors available with antimicrobial powder coating. Standard color for waterbase is metallic grey while other colors are available upon request
- * Packed unassembled with an easy mounting instruction sheet & fixing set. 2 packs. See info chart for pack sizes.



COLOURS IN STOCK



Silver

SUITABLE FOR

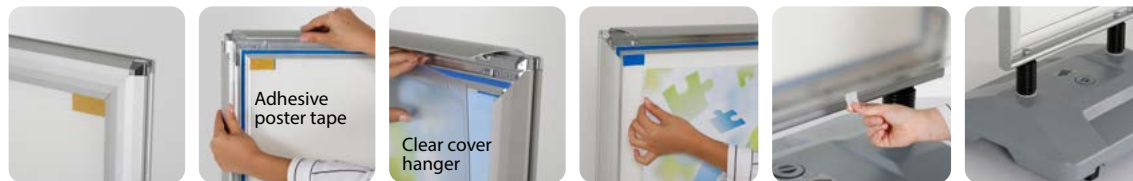
Eco Waterbase Windsign can be used for INDOOR and OUTDOOR applications, for signage needs in many locations like shopping centers, markets, groceries, hotels, offices airports, shops and stores, hospitals, schools, apartments and many more.

WATCH VIDEO



Watch video at our website
www.mtdisplaysllc.com

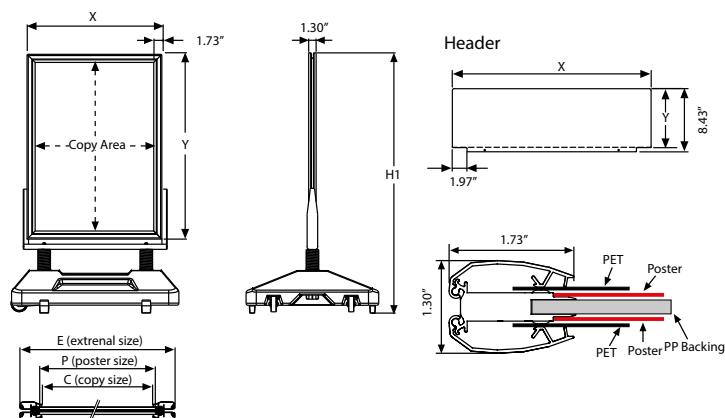
FEATURES



EXPLODED VIEW



TECHNICAL DRAWING



ARTICLES

ARTICLE	EXTERNAL (x-y)	POSTER	COPY	H1
UEWM000N22	25.03" X 31.03"	22" X 28"	21.53" X 27.53"	45.08"
UEWM000N23	23.03" X 33.03"	20" X 30"	19.53" X 29.53"	46.85"
UEWM000N24	27.03" X 39.03"	24" X 36"	23.53" X 35.53"	53.35"
UEWM000N34	33.03" X 43.03"	30" X 40"	29.53" X 39.53"	57.28"
UEWM000N46	43.03" X 63.03"	40" X 60"	39.53" X 59.53"	74.02"

MAIN BODY		WATER BASE	
WEIGHT	PACKING SIZE	WEIGHT	PACKING SIZE
WITH PACKING	*W X H X D	WITH PACKING	*W X H X D
17.526 lbs	26.18" X 40.55" X 1.57"	17.857 lbs	22.44" X 28.35" X 9.45"
17.526 lbs	24.21" X 43.31" X 1.57"	17.857 lbs	22.44" X 28.35" X 9.45"
19.731 lbs	27.95" X 48.82" X 1.57"	25.353 lbs	33.07" X 26.38" X 9.45"
24.912 lbs	34.45" X 53.15" X 1.57"	25.353 lbs	33.07" X 26.38" X 9.45"
37.478 lbs	39.96" X 67.52" X 1.57"	30.864 lbs	40.16" X 30.31" X 9.45"

HEADER	PRINTING AREA (x-y)	WEIGHT
ARTICLE	WITH PACKING	
UYFT005022	25" X 7.87"	0.551 lbs
UYFT005023	23.03" X 7.87"	0.507 lbs
UYFT005024	27.05" X 7.87"	0.595 lbs
UYFT005034	33.03" X 7.87"	0.738 lbs
UYFT005046	43.03" X 7.87"	0.992 lbs

OPTIONAL ACCESSORIES



Eco Swingmaster & Eco Waterbase Wind Sign header (3 PVC Foam).

PHYSICAL DATA

Material

1.77" aluminium profile snap open swing master frame, PET anti-reflex poster cover, PP backing, optional PVC Foam header, LDPE Resin waterbase, produced in rotation molding line.

Poster Material & Thickness

0.0039" – 0.0078" for standard product. Max poster thickness is 0.078". Any non-standard poster thicknesses should be indicated with order.

Surface Finish

Natural silver-anodized, or black in standard and various RAL colors available with antimicrobial powder coating. Call for custom color requests. Standard color for waterbase is metallic grey while other colors are available upon request.

Recycled Content

Up to 78 % recycled content used.

Warranty

All products are guaranteed for 2 years by MT Displays with below conditions:

[Warranty Conditions](#)

Installation Considerations

Packed unassembled with an easy mounting instruction sheet & fixing set. 2 packs. See info chart for pack sizes. One set includes a double sided snap open swing master frame, 2 anti-reflex poster covers, 1 PP backing, heavy waterbase with wheels, 2 nuts for installation. For optional header use, header enabled frames must be ordered. Optional carry tool is available.

Design Considerations

Double-sided Pavement Sign with heavy waterbase and steel spring design for flexibility and stability. Suitable for various poster sizes, available with round mitred corners for raising safety level on the pavement. Suitable for windy outdoor conditions.

Suitable for rainy conditions with over size anti-reflex PET and a rubber seal around the frame for protecting the poster within. The wheels ensure the movement of the unit.

Storage Conditions

Goods should be stored at 32°F to 77°F in a dry place. Store in the original package.

Cleaning and Disinfecting

Clean your displays, with damp microfiber clothes, rinsed with simply water or warm, soapy or gentle shampooed water. Avoid using vinegar, abrasive, acidic, alcohol-based or heavy cleaners or cleaners containing Ammonia. Only after cleaning the product, if needed, simply apply disinfectant or sanitizer that is in compliance with your local guidelines and regulations.

Patent

PCT/EP2018/060515



T: +1 855-478-0652 / info@mtdisplaysllc.com / www.mtdisplaysllc.com

PRINT TEMPLATES

Eco Waterbase Windsign - 20" x 30"

Document Size: 20.4" x 30.4" (Includes Bleeds)

Finished Size: 20" x 30" (508 x 762 mm) [Print](#)

Eco Waterbase Windsign - 22" x 28"

Document Size: 22.4" x 28.4" (Includes Bleeds)

Finished Size: 22" x 28" (558.8 x 711.2 mm) [Print](#)

Eco Waterbase Windsign - 24" x 36"

Document Size: 24.4" x 36.4" (Includes Bleeds)

Finished Size: 24" x 36" (609.6 x 914.4 mm) [Print](#)

Eco Waterbase Windsign - 30" x 40"

Document Size: 30.4" x 40.4" (Includes Bleeds)

Finished Size: 30" x 40" (762 x 1016 mm) [Print](#)

Eco Waterbase Windsign - 40" x 60"

Document Size: 40.4 x 60.4 (Includes Bleeds)

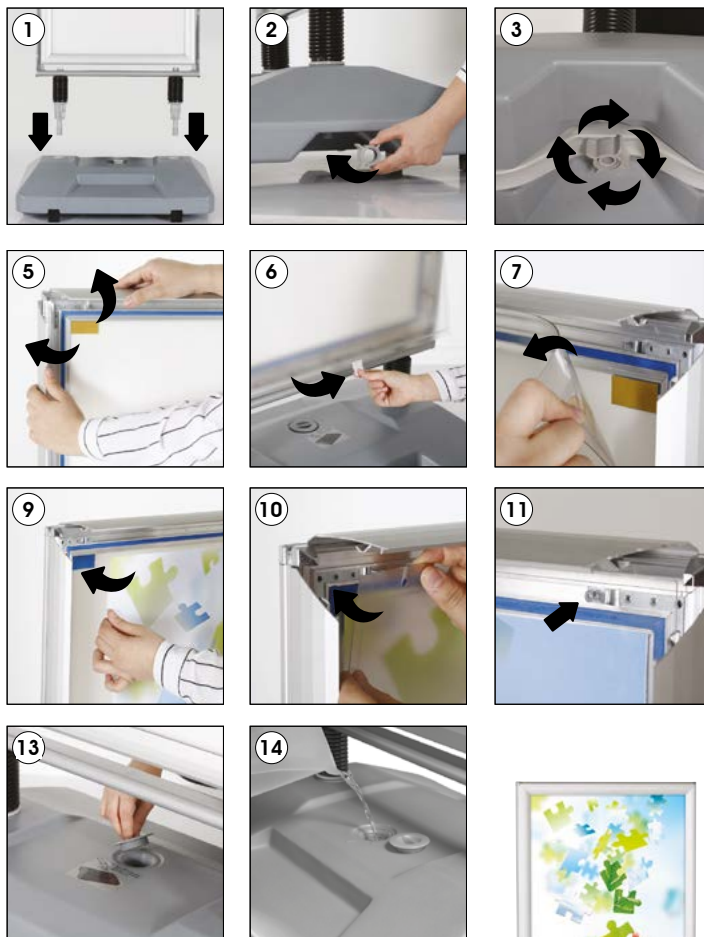
Finished Size: 40" x 60" (1016 x 1524 mm) [Print](#)

INSTALLATION INSTRUCTIONS

Eco Waterbase Windsign / 1010537H000

Each product package includes

- 1 x Eco Waterbase Windsign Frame
- 1 x Water base
- 2 x Nut
- 2 x PET cover



• Please inform the order number on the product or on the carton (e.g. 1/110001394-460) to the place that you have made the purchase if any problem with the product occurs.

• All rights reserved. All pictures, figures and writings are secured internationally by copy-right law. Infringements will be sued by civil and legal law.

This technical sheet's contents are all subject to update and modification at MT Displays' exclusive discretion. There is nothing official about this document. For final and legally binding information, please get in touch with the sales staff at MT Displays.



T: +1 855-478-0652 / info@mtdisplaysllc.com / www.mtdisplaysllc.com