

ECO A BOARDS



COST-SAVING SIDEWALK SIGNS WITH CLICK CLACK OPENING DESIGN

A double-sided customer stopper, practical to change the poster within. 19.68"x 27.55", 27.55"x39.37" sizes are available. 1" profile, snap frame. Round or mitred corner options are available. PS backing for indoor use on Eco Indoor A Board whereas galvanized backing for Eco Outdoor A Board. Both are offered with cost-saving mill finished legs.

KEY SELECTION ATTRIBUTES

- * Double-sided Pavement Sign with "Click Clack" snap open design.
- * Cost-saving with mill finished legs.
- * Suitable for poster sizes 19.68"x 27.55" and 27.55"x39.37".
- * One set includes double sided snap open frames, 2 anti-reflex poster covers, hinges, and scissors for keeping the system stable.
- * Optional Wire Header Holder, Header Board and Brochure Baskets are not included, should be ordered separately.
- * Galvanised metal back panel on Outdoor version provides stability.
- * Natural silver-anodized, black in standard and various RAL colors available with antimicrobial powder coating.
- * Packed in a single box.



Outdoor - Silver



Outdoor - Black



Indoor - Black



Indoor - Silver



COLOURS IN STOCK



COLOUR OPTIONS

White - RAL 9003

Red - RAL 3020

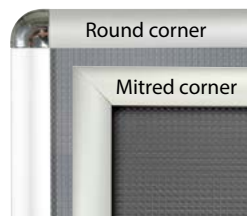
Green - RAL 6029

Blue - RAL 5002

Yellow - RAL 1021

CORNER TYPES

Indoor 1" profile



Outdoor 1.25" profile



SUITABLE FOR

Eco A Boards can be used for INDOOR and OUTDOOR applications, for signage needs in many locations like shopping centers, markets, groceries, hotels, offices airports, shops and stores, hospitals, schools, apartments and many more.

WATCH VIDEO



Watch video at our website
www.mtdisplaysllc.com

FEATURES

Indoor 1" profile

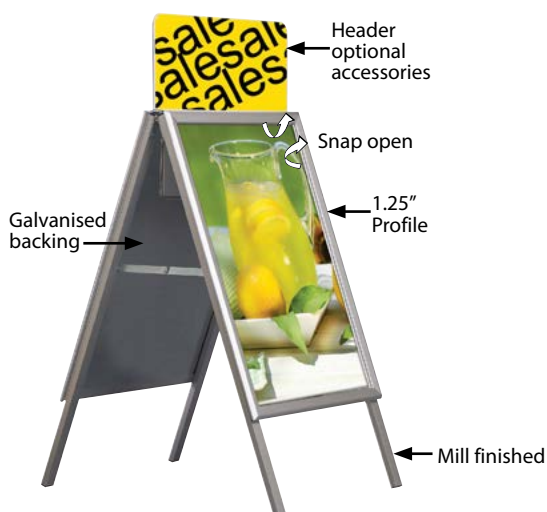


Outdoor 1.25" profile



EXPLODED VIEW

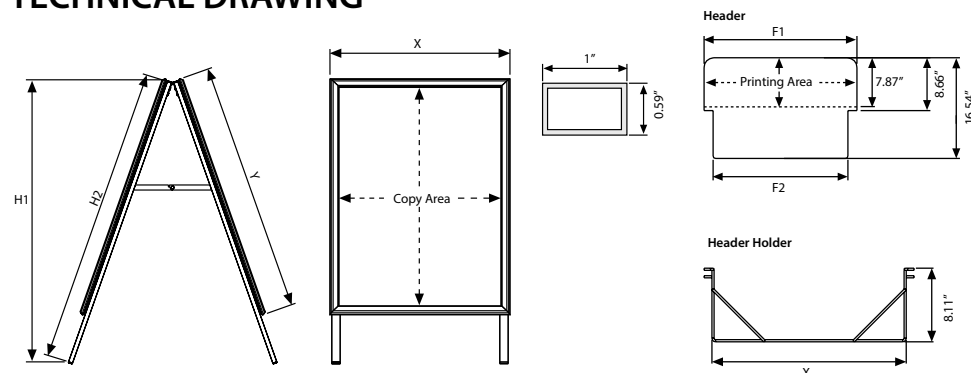
Outdoor 1.25" profile



Indoor 1" profile



TECHNICAL DRAWING



T: +1 855-478-0652 / info@mtdisplaysllc.com / www.mtdisplaysllc.com

ARTICLES

ECO A BOARD INDOOR : PS Backing + Mill Finish Legs PROFILE : 25 mm									WEIGHT	PACKING SIZE	HEADER: Indoor 25 mm				WEIGHT	HEADER HOLDER		WEIGHT
SILVER MITRED	SILVER ROUND	BLACK MITRED	BLACK ROUND	POSTER	X	Y	H1	H2	WITH PACKING	*W X H X D	25 MM	F1	F2	WITH PACKING	25 MM	X	WITH PACKING	
UAB255HN22	UAB250HN22	UAB255HB22	UAB250HB22	22" X 28"	21.97"	29.17"	35.63"	37.40"	12.897 lbs	27.17" X 43.31" X 3.35"	UYFT250022	23.15"	16.54"	0.881 lbs	UYTT250022	20.12"	1.719 lbs	
UAB255HN24	UAB250HN24	UAB255HB24	UAB250HB24	24" X 36"	25.20"	37.20"	43.31"	47.24"	17.306 lbs	27.95" X 54.72" X 3.35"	UYFT250024	25.16"	16.54"	1.234 lbs	UYTT250024	22.36"	1.807 lbs	

ECO A BOARD OUTDOOR : Galvanized Backing + Mill Finish Legs PROFILE : 32 mm									WEIGHT	PACKING SIZE	HEADER: Outdoor 32 mm				WEIGHT	HEADER HOLDER		WEIGHT
MITRED SILVER	MITRED BLACK	ROUND SILVER	SAFE CORNER	POSTER	X	Y	H1	H2	WITH PACKING	*W X H X D	32 mm	F1	F2	WITH PACKING	32 mm	X	WITH PACKING	
UAB325HN22	UAB325HB22	UAB320HN22	UAB321HN22	22" X 28"	22.48"	29.69"	35.63"	37.40"	18.959 lbs	27.17" X 43.31" X 3.35"	UYFT000022	21.57"	18.50"	1.763 lbs	UYTT000023	19.41"	1.653 lbs	
UAB325HN24	UAB325HB24	UAB320HN24	UAB321HN24	24" X 36"	25.20"	37.20"	43.31"	47.24"	23.368 lbs	27.95" X 54.72" X 3.35"	UYFT000024	25.59"	22.52"	2.645 lbs	UYTT000024	23.43"	1.741 lbs	

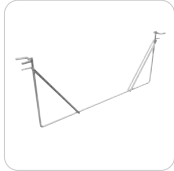
OPTIONAL ACCESSORIES



A Board header
(0.157" PVC Foam).



A board basket 8.26" x
11.69" size to hang on
scissors.UYTS3000A4



A Board wire header
holder.

PHYSICAL DATA

Material

1" or 1.25" aluminium profile click clack snap open frame, PET anti-reflex poster cover, PS or galvanised metal backing. PVC Foam optional header.

Poster Material & Thickness

0.0039" – 0.0078" for standard product.
For 1" : Max poster thickness 0.0078" for mitred corner, 0.039" for round corner.
For 1.25" : Max poster thickness 0.118" for mitred corner, 0.078" for round corner.
Any non-standard poster thicknesses should be indicated with order.

Surface Finish

Mill finished legs. Natural silver-anodized, or black in standard and various RAL colors available with antimicrobial powder coating for frame part. Call for custom color requests.

Recycled Content

Up to 70% recycled content used.

Warranty

All products are guaranteed for 2 years by MT Displays with below conditions:
[Warranty Conditions](#)

Installation Considerations

Single packed with an easy-to-understand instruction sheet. Heavy back panel provides stability. No tool assembly.
Header accessories are not included.
Should be ordered separately. Each unit has water drainage slots on bottom profiles. Eco A Boards are packed in a single box with an easy-to-understand instruction sheet. One set includes double sided snap open frames with 0.98" profile for Indoor version or 1.25" profile for Outdoor version, 2 anti-reflex poster covers, PS backing for Indoor version or galvanised metal backing for Outdoor version, hinges, and scissors for keeping the system stable. Each unit has water drainage slots on bottom profiles. No tool assembly. Optional Wire Header Holder, Header Board and Brochure Baskets are not included, should be ordered separately.

Storage Conditions

Goods should be stored at 32°F to 77°F in a dry place. Store in the original package.

Design Considerations

Double-sided Pavement Sign with "Click Clack" snap-open design. Cost-saving with mill finished legs. Suitable for silk screen printing, max. letter height is 0.59" for 0.98" profile or 0.62" for 32mm profile. Suitable for 19.68" x 27.55" and 27.55" x 39.37" poster sizes with a sight angle that stops passers-by. Galvanised metal heavy back panel on Outdoor version provides stability.

Cleaning and Disinfecting

Clean your displays, with damp microfiber clothes, rinsed with simply water or warm, soapy or gentle shampooed water. Avoid using vinegar, abrasive, acidic, alcohol-based or heavy cleaners or cleaners containing Ammonia. Only after cleaning the product, if needed, simply apply disinfectant or sanitizer that is in compliance with your local guidelines and regulations.

PRINT TEMPLATES

A Eco Board Indoor - 22" x 28"

Document Size: 22.4" x 28.4" (Includes Bleeds)
Finished Size: 22" x 28"

A Eco Board Indoor - 24" x 36"

Document Size: 24.4" x 36.4" (Includes Bleeds)
Finished Size: 24" x 36"

A Eco Board Outdoor - 22" x 28"

Document Size: 22.4" x 28.4" (Includes Bleeds)
Finished Size: 22" x 28"

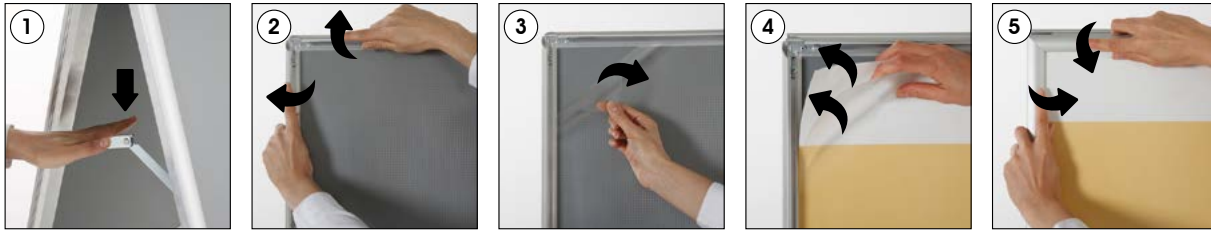
A Eco Board Outdoor - 24" x 36"

Document Size: 24.4" x 36.4" (Includes Bleeds)
Finished Size: 24" x 36"

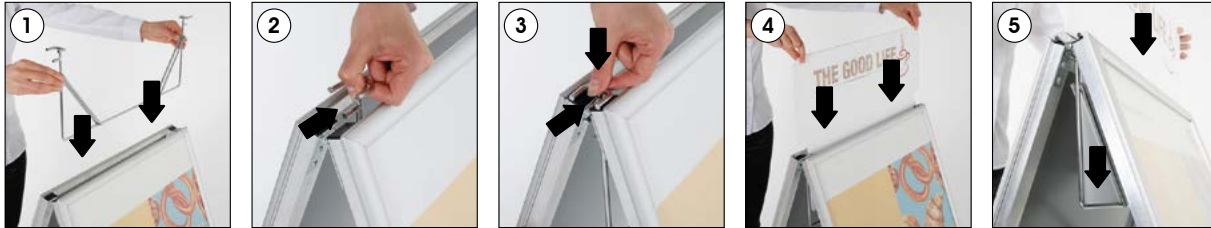


INSTALLATION INSTRUCTIONS

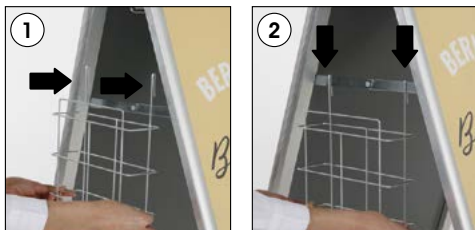
Eco A Board / 1007027



Optional Header & Header Holder



Optional Basket



Note: Wire header holder, PVC Foam header and baskets are optional.



- Please inform the order number on the product or on the carton (e.g. 1/110001394-460) to the place that you have made the purchase if any problem with the product occurs.
- All rights reserved. All pictures, figures and writings are secured internationally by copy-right law. Infringements will be sued by civil and legal law.

This technical sheet's contents are all subject to update and modification at MT Displays' exclusive discretion. There is nothing official about this document. For final and legally binding information, please get in touch with the sales staff at MT Displays.



T: +1 855-478-0652 / info@mtdisplaysllc.com / www.mtdisplaysllc.com