

EASY WOOD FRAME

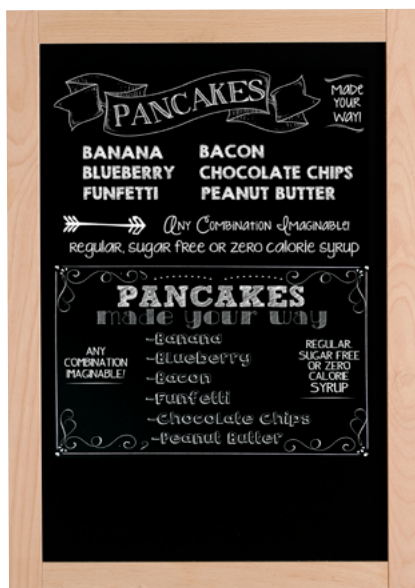


WALL-MOUNTED BOARDS FOR PRESENTING YOUR REMOVABLE MESSAGES

Suitable for the display of messages in restaurants, cafés, bars, malls, offices and education centers. The erasable surface enables you to erase your messages and transmit them to your audience while keeping them updated. You can use a chalkboard pen to write on the black surface. There are also special water-based and scent-free markers. We sell chalk pens individually 2 in convenient sets.

KEY SELECTION ATTRIBUTES

- * Practical, single-sided and wall-mounted Beech Wood Frames, designed for writing on with chalk or waterbase markers.
- * Suitable for INTERIOR use in landscape and portrait positions with optional 11.81"x15.74", 15.74"x23.62", 15.74"x35.43", 23.62"x31.49", 23.62"x45.27" and 31.49"x47.24" writing areas.
- * A perfect way to present removable messages, announcements or promotions to your audience while keeping them updated.
- * One set includes beech wood frame with 0.86" depth and lacquered finish for durability, a single-sided dry wipe black chalkboard for changing notes easily, 2 anchors, 2 hangers and 2 screws for installing on wall.
- * Suitable for using chalk or chalkboard water-based pen. Chalkboard pens are not included in the original pack, should be ordered separately. No-ghost after cleaning. For spotless removing of chalk pens from surface, please use window & glass cleaner otherwise clean with damp cloth.
- * Can also be used with easel to provide an aesthetic appearance to your message. Please order easel separately.
- * Natural or dark beech wood frames with lacquered finish and black chalk surface in standard.
- * Each unit comes ready with mounting set and easy-to-understand installation sheet.



Natural wood



Dark wood



COLOURS IN STOCK



SUITABLE FOR

Easy Wood Frames can be used for INDOOR applications, for signage needs in many locations like shopping centers, markets, groceries, hotels, offices airports, shops and stores, hospitals, schools, apartments and many more.

FEATURES

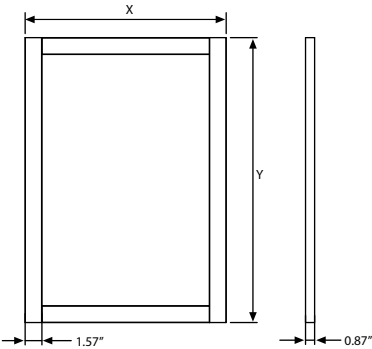


Landscape or portrait positions

EXPLODED VIEW



TECHNICAL DRAWING



ARTICLES

NATURAL WOOD	EXTERNAL	SIZE	DESCRIPTION	WEIGHT	PACKING SIZE
UWSS010034	14.96" X 18.90"	11.81" X 15.75"	Black Chalkboard	2,337 lbs	15.75" X 20.08" X 0.94"
UWSS010046	18.90" X 26.77"	15.75" X 23.62"	Black Chalkboard	3,638 lbs	19.69" X 27.95" X 0.94"
UWSS010049	18.90" X 38.58"	15.75" X 35.43"	Black Chalkboard	6,769 lbs	19.69" X 39.76" X 0.94"
UWSS010068	26.77" X 34.65"	23.62" X 31.50"	Black Chalkboard	7,497 lbs	27.56" X 35.83" X 0.94"
UWSS010061	26.77" X 48.43"	23.62" X 45.28"	Black Chalkboard	9,57 lbs	27.56" X 51.57" X 0.94"
UWSS010081	34.65" X 50.39"	31.50" X 47.24"	Black Chalkboard	11,135 lbs	35.43" X 51.57" X 0.94"

OPTIONAL ACCESSORIES



Colour chalkboard marker. 0.39" wide. 5 Pcs. / UYAKLM1251



White chalkboard marker for Wood Display. 0.39" wide. 3 Pcs / UYAKLM1250

PHYSICAL DATA

Material
Beech Wood frame, magnetic chalkboard.

Surface Finish
Natural or dark beech wood frames with lacquered finish and black chalk surface in standard.

Warranty
All products are guaranteed for 1 years by MT Displays with below conditions:
[Warranty Conditions](#)

Storage Conditions
Goods should be stored at 32°F to 77°F in a dry place. Store in the original package.

Installation Considerations
Each unit comes ready with mounting set and easy-to-understand installation sheet. One set includes beech wood frame with 0.86" depth and lacquered finish for durability, a single-sided dry wipe black chalkboard for changing notes easily, 2 anchors, 2

hangers and 2 screws for installing on wall. Suitable for using chalk or chalkboard water-based pen. Chalkboard pens are not included in the original pack, should be ordered separately. No-ghost after cleaning. For spotless removing of chalk pens from surface, please use window & glass cleaner otherwise clean with damp cloth. Can also be used with easel to provide an aesthetic appearance to your message. Please order easel separately.

Design Considerations
Practical, single-sided and wall-mounted Beech Wood Frames, designed for writing on with chalk or waterbase markers. Suitable for INTERIOR use in landscape and portrait positions with optional 11.81"x15.74", 15.74"x23.62", 15.74"x35.43", 23.62"x31.49", 23.62"x45.27" and 31.49"x47.24" writing areas. A perfect way to present removable messages, announcements or promotions to your audience while keeping them updated.

Cleaning and Disinfecting
Clean your displays, with damp microfiber clothes, rinsed with simply water or warm, soapy or gentle shampooed water. Avoid using vinegar, abrasive, acidic, alcohol-based or heavy cleaners or cleaners containing Ammonia. Only after cleaning the product, if needed, simply apply disinfectant or sanitizer that is in compliance with your local guidelines and regulations.



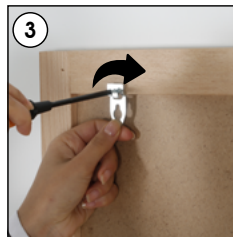
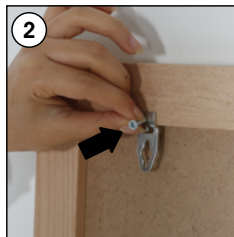
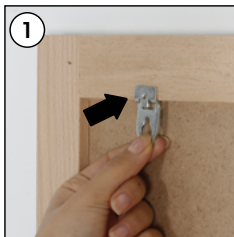
T: +1 855-478-0652 / info@mtdisplaysllc.com / www.mtdisplaysllc.com

INSTALLATION INSTRUCTIONS

Easy Wood Frame / 1006607

Each frame includes wall mounting accessories

- 2 x Screws
- 2 x Anchors
- 2 x Hangers



- Please inform the order number on the product or on the carton (e.g. 1/110001394-460) to the place that you have made the purchase if any problem with the product occurs.
- All rights reserved. All pictures, figures and writings are secured internationally by copy-right law. Infringements will be sued by civil and legal law.

This technical sheet's contents are all subject to update and modification at MT Displays' exclusive discretion. There is nothing official about this document. For final and legally binding information, please get in touch with the sales staff at MT Displays.



T: +1 855-478-0652 / info@mtdisplaysllc.com / www.mtdisplaysllc.com