

DOUBLE SIDED SLIDE-IN FRAME



SIMPLE TO USE BUT VERY EFFECTIVE IN APPLICATION

A Double Sided Slide-in Frame, made of quality aluminium, enables you to easily change your posters by sliding the graphics in&out. Anti reflective and transparent, PET cover sheets in the frame protects your poster from any sun and light effects. Plastic hooks are designed to hang the sign frame on the head of a screw or nail, on the wall or ceiling and suitable for outdoor conditions. These plastic clips are visible and mounted on the upper side of the frame. The poster is inserted only from one side by simply sliding the panels out and placing the posters. Once mounted, change of a poster does not require the frame to leave the wall, with this type of sliding frame, you can insert 2 rear - to- back posters.

KEY SELECTION ATTRIBUTES

- Ideal for posters of various sizes.
- Custom sizes options ranging from a minimum of 5.82"x8.26" to a maximum of 39.37"x39.37".
- Natural silver-anodized and various RAL colors are available with antimicrobial powder coating.
- 2 Anti-glare poster cover sheets.
- 2 moving hangers.
- Landscape and portrait positions.
- Suction caps are optional.



8.5" X 11" size portrait



8.5" X 11" size landscape

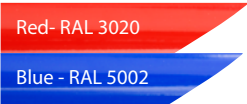
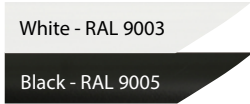


COLOURS IN STOCK



Silver

COLOUR OPTIONS



SUITABLE FOR

Slide-in Frames can be used for INDOOR or OUTDOOR applications under a top shelter, for publishing various messages in many locations like shopping centers, markets, groceries, hotels, offices airports, shops and stores, hospitals, schools, apartments banks, car dealers, restaurants, telecom companies, insurance companies, libraries, museums, travel agencies and many more.

WATCH VIDEO

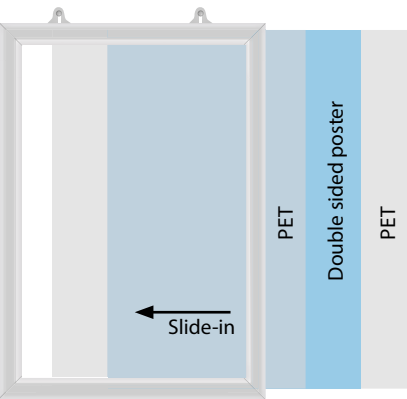


Watch video at our website www.mtdisplaysllc.com

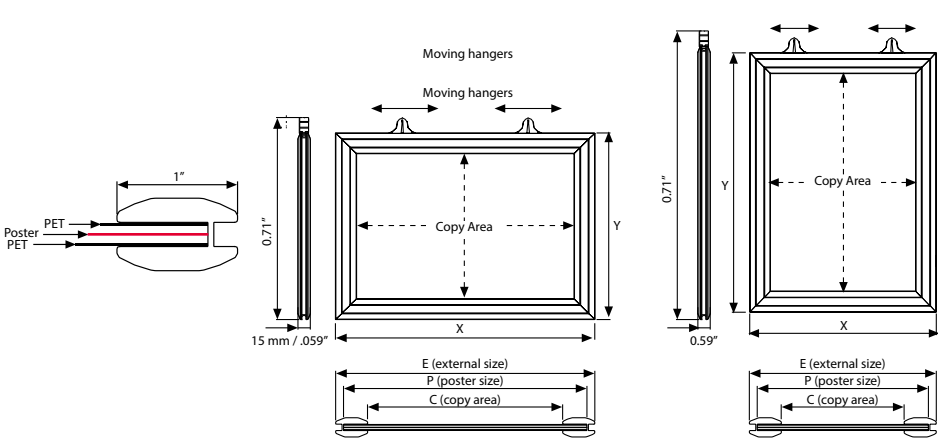
FEATURES



EXPLODED VIEW



TECHNICAL DRAWING



ARTICLES

PORTRAIT	LANDSCAPE	EXTERNAL(x-y)	POSTER	COPY	WEIGHT	PACKING SIZE
					WITH PACKING	*W X H X D
UCS255N181	UCS255N281	9.06" X 11.57"	8.5" X 11"	7.09" X 9.61"	1.102 lbs	10.63" X 12.99" X 0.83"
UCS255N117	UCS255N217	11.57" X 17.56"	11" X 17"	9.61" X 15.59"	1.873 lbs	12.99" X 18.90" X 0.83"
UCS255N118	UCS255N218	18.58" X 24.57"	18" X 24"	16.61" X 22.60"	2.645 lbs	20.08" X 25.98" X 0.83"
UCS255N122	UCS255N222	22.56" X 28.58"	22" X 28"	20.59" X 26.61"	3.637 lbs	24.02" X 30.31" X 0.83"
UCS255B181	UCS255B281	9.06" X 11.57"	8.5" X 11"	7.09" X 9.61"	1.102 lbs	10.63" X 12.99" X 0.83"
UCS255B117	UCS255B217	11.57" X 17.56"	11" X 17"	9.61" X 15.59"	1.873 lbs	12.99" X 18.90" X 0.83"
UCS255B118	UCS255B218	18.58" X 24.57"	18" X 24"	16.61" X 22.60"	2.645 lbs	20.08" X 25.98" X 0.83"
UCS255B122	UCS255B222	22.56" X 28.58"	22" X 28"	20.59" X 26.61"	3.637 lbs	24.02" X 30.31" X 0.83"

OPTIONAL ACCESSORIES



Suction cap. Packed in 10. / UYAA006000

PHYSICAL DATA

Material
1" aluminum profiles. 2 PET poster covers

Surface Finish
Silver anodized or black colour, antimicrobial powder coating. Custom colors also available, call for custom color requests.

Recycled Content
Up to 70% recycled content used.

Warranty
All products are guaranteed for 3 years by MT Displays with below conditions:
[Warranty Conditions](#)

Storage Conditions
Goods should be stored at 32°F to 77°F in a dry place. Store in the original package.

Installation Considerations
Each frame includes 2 suspension hangers. Each frame is packed individual in carton box. Moving hangers provide easy positioning for hanging.

Poster Material & Thickness
0.0039" – 0.0078" for standard product. Max poster thickness is 0.11" when used with PET poster protection and 0.15" when used without PET protection. Any non-standard poster thicknesses should be indicated with order.

Design Considerations
Suitable for silk screen printing, max. letter height is 0.35".

Cleaning and Disinfecting
Clean your displays, with damp microfiber clothes, rinsed with simply water or warm, soapy or gentle shampooed water. Avoid using vinegar, abrasive, acidic, alcohol-based or heavy cleaners or cleaners containing Ammonia. Only after cleaning the product, if needed, simply apply disinfectant or sanitizer that is in compliance with your local guidelines and regulations.



PRINT TEMPLATES

Double Sided Slide-in Frame - 8.5"x11"
Document Size: 8.9" x 11.4" (Includes Bleeds)
Finished Size: 8.5"x11" (215.9x279.4 mm) [Print](#)

Double Sided Slide-in Frame - 11"x17"
Document Size: 11.4" x 17.4" (Includes Bleeds)
Finished Size: 11"x17" (279.4x431.8 mm) [Print](#)

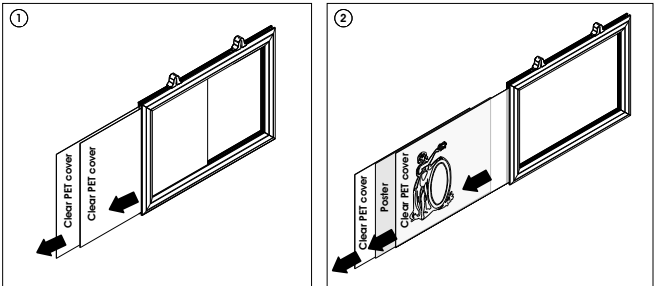
Double Sided Slide-in Frame - 18"x24"
Document Size: 18.4" x 24.4" (Includes Bleeds)
Finished Size: 18"x24" (457.2x609.6 mm) [Print](#)

Double Sided Slide-in Frame - 20"x30"
Document Size: 20.4" x 30.4" (Includes Bleeds)
Finished Size: 20"x30" (508x762 mm) [Print](#)

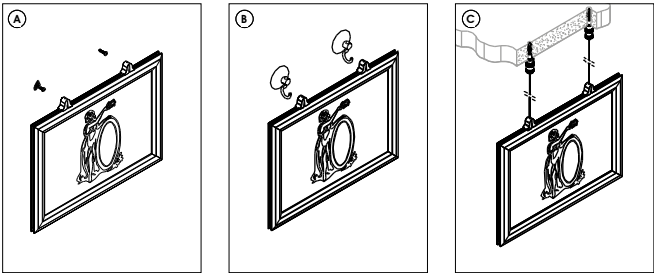
Double Sided Slide-in Frame - 22"x28"
Document Size: 22.4" x 28.4" (Includes Bleeds)
Finished Size: 22"x28" (558.8x711.1 mm) [Print](#)

INSTALLATION INSTRUCTIONS

Double Sided Slide-in Frame Landscape / 1001928



3 different mounting styles

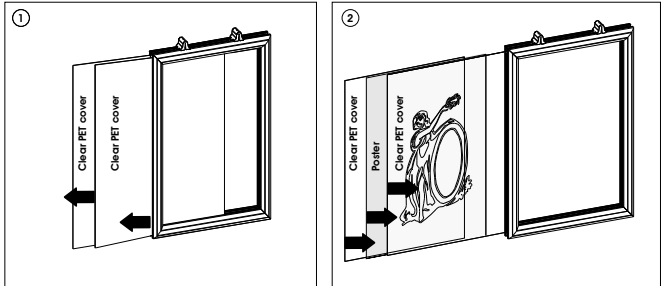


*All accessories in the pictures are optional, are not included in standard kits.
Plastic hangers in pictures 3 are included in all frames.

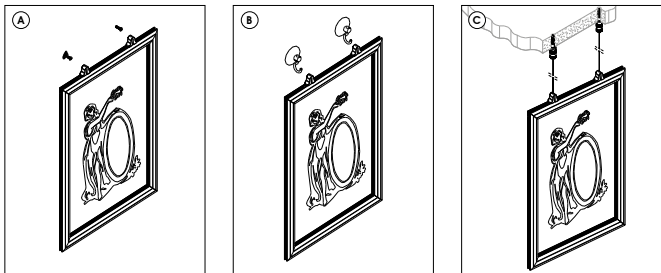
*All accessories in the pictures are optional, are not included in standard kits.
Plastic hangers in pictures 3 are included in all frames.

*Please inform the order number on the product or on the carton (e.g. 1/110001394-460) to the place that you have made the purchase if any problem with the product occurs. All rights reserved. All pictures, figures and writings are secured internationally by copy-right law. Infringements will be sued by civil and legal law.

Double Sided Slide-in Frame Portrait / 1001929



3 different mounting styles



*All accessories in the pictures are optional, are not included in standard kits.
Plastic hangers in pictures 3 are included in all frames.

*All accessories in the pictures are optional, are not included in standard kits.
Plastic hangers in pictures 3 are included in all frames.

• All rights reserved. All pictures, figures and writings are secured internationally by copy-right law. Infringements will be sued by civil and legal law.
• Please inform the order number on the product or on the carton (e.g. 1/110001394-460) to the place that you have made the purchase if any problem with the product occurs.

This technical sheet's contents are all subject to update and modification at MT Displays' exclusive discretion. There is nothing official about this document. For final and legally binding information, please get in touch with the sales staff at MT Displays.

