

## DOOR SIGN



## PERFECT SIGN TOOL TO HELP DIRECT TRAFFIC IN BUSINESS ENVIRONMENT

Suitable for use in open-air spaces or public areas such as schools, offices, hospitals, etc. It is an elegant and practical product. You merely need to open the front profile in order to change your documents. An anti-reflex PET cover protects your documents from tearing and suffering damage. It can be used both in portrait and landscape positions.

## KEY SELECTION ATTRIBUTES

- \* Ideal for medium-sized posters.
- \* It is a secure, hard-to-open profile.
- \* Suitable for open-air use or highly frequented areas accessible to the public.
- \* Silver anodised aluminium poster snap profiles.
- \* Natural silver-anodised finish and various RAL colours are available.

- \* 0.59" or 1.02" profiles on both short sides.
- \* Front cover is anti-reflex
- \* Designed for paper inserts\* Anti-reflex PET cover for protection
- \* Landscape & portrait position Fixing kit included for 1" and self-adhesive tape for \* 0.59" models.
- Fixing kit included for 1" and self-adhesive tape for 0.59" models.



0.59"



1.02"



## COLOURS IN STOCK



Silver

## COLOUR OPTIONS

Black - RAL 9005

White - RAL 9003

Red - RAL 3020

Blue - RAL 5002

Green - RAL 6029

Yellow - RAL 1021

## SUITABLE FOR

Door Signs can be used for INDOOR applications, for signage needs in many locations like shopping centers, markets, hotels, offices airports, shops and stores, hospitals, schools, apartments and many more.

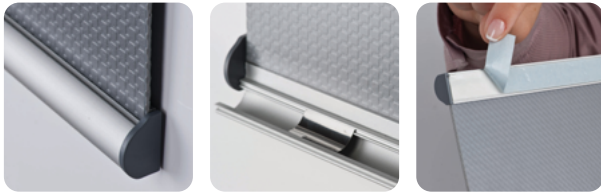
## WATCH VIDEO



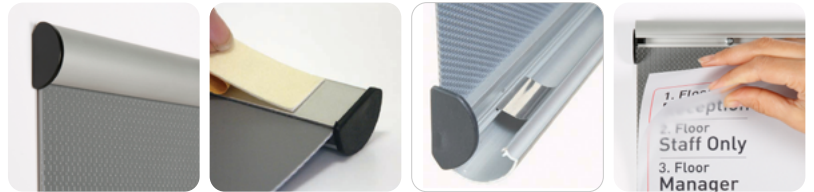
Watch video at our website  
[www.mtdisplays.com](http://www.mtdisplays.com)

## FEATURES

0.59"



1.02"

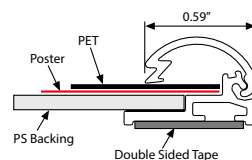
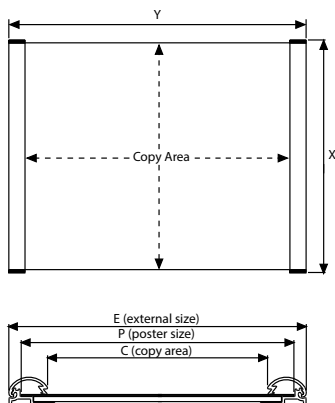


## EXPLODED VIEW

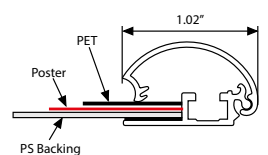
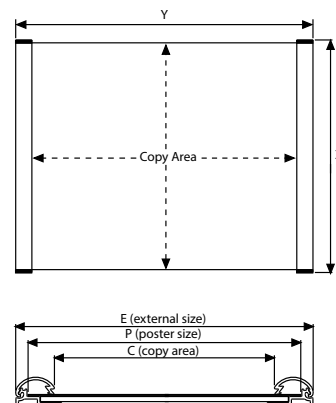


## TECHNICAL DRAWING

0.59"



1.02"



T: +1 855-478-0652 / [info@mtdisplaysllc.com](mailto:info@mtdisplaysllc.com) / [www.mtdisplaysllc.com](http://www.mtdisplaysllc.com)

ARTICLES

15 mm Poster Snap				WEIGHT	PACKING SIZE
ARTICLE	EXTERNAL (x-y)	POSTER	COPY	WITH PACKING	*W X H X D
UDS150N046	4.20" X 6.39"	4" X 6"	4" X 5.17"	1.333 lbs	4.72" X 7.87" X 3.94" (5 Pcs)
UDS150N057	5.20" X 7.39"	5" X 7"	5" X 6.17"	1.984 lbs	7.09" X 9.45" X 5.51" (5 Pcs)
UDS150N081	8.70" X 11.39	8.5" X 11"	8.5" X 10.17"	5.577 lbs	9.65" X 13.78" X 3.15" (10 Pcs)

26 mm Poster Snap				WEIGHT	PACKING SIZE
ARTICLE	EXTERNAL (x-y)	POSTER	COPY	WITH PACKING	*W X H X D
UDS0008000	4.24" X 7.14"	4" X 6"	4" X 5.13"	1.102 lbs	4.72" X 7.87" X 3.94" (10 pcs)
UDS0007000	5.24" X 8.14"	5" X 7"	5" X 6.13"	1.984 lbs	5.31" X 7.87" X 3.94" ( 5 pcs)
UDS0006000	8.74" X 12.14"	8.5" X 11"	8.5" X 10.13"	2.976 lbs	10.04" X 13.39" X 3.15" (5 pcs)

PHYSICAL DATA

**Material**  
0.59" or 1.02" aluminum profiles.  
PET poster cover, PS backing or ABS backing.

**Poster Material & Thickness**  
Suitable for paper inserts in thickness 0.0039" – 0.0078" for standard product and max 0.039" for nonstandard. Any non-standard paper thicknesses should be indicated with order.

**Surface Finish**  
Silver anodized, or black colour, antimicrobial powder coating. Custom colors also available, call for custom color requests.

**Recycled Content**  
Up to 70% recycled content used.

**Warranty**  
All products are guaranteed for 3 years by MT Displays with below conditions:  
[Warranty Conditions](#)

**Installation Considerations**  
Each door sign includes mounting instruction sheet. 0.59" in top snap 0.31" poster & in bottom snap 0.31" poster is placed within the clamping system. 1.02" in top snap 0.43" poster & in bottom snap 0.43" poster is placed within the clamping system. Please clean the surface before applying the double-sided tape for better application.

**Storage Conditions**  
Goods should be stored at 32°F to 77°F in a dry place. Store in the original package.

**Design Considerations**  
Suitable for silk screen printing, max. letter height is 0.59" for 1". Suitable for silk screen printing, max. letter height is 0.82" for 1.65".

**Cleaning and Disinfecting**  
Clean your displays, with damp microfiber clothes, rinsed with simply water or warm, soapy or gentle shampooed water. Avoid using vinegar, abrasive, acidic, alcohol-based or heavy cleaners or cleaners containing Ammonia. Only after cleaning the product, if needed, simply apply disinfectant or sanitizer that is in compliance with your local guidelines and regulations.

PRINT TEMPLATES

**Door Sign 0.59" - 4"x6"**  
Document Size: 8.9" x 11.4" (Includes Bleeds)  
Finished Size: 8.5"x11" (215.9x279.4 mm)

**Door Sign 0.59" - 5"x7"**  
Document Size: 20.4" x 30.4" (Includes Bleeds)  
Finished Size: 20"x30" (508x762 mm)

**Door Sign 0.59" - 8.5"x11"**  
Document Size: 22.4" x 28.4" (Includes Bleeds)  
Finished Size: 22"x28" (558.8x711.1 mm)

**Door Sign 1.02" - 4"x6"**  
Document Size: 4.4" x 6.4" (Includes Bleeds)  
Finished Size: 4"x6" (101.6x152.4 mm)

**Door Sign 0.59" - 5"x7"**  
Document Size: 5.4" x 7.4" (Includes Bleeds)  
Finished Size: 5"x7" (127x177.8 mm)

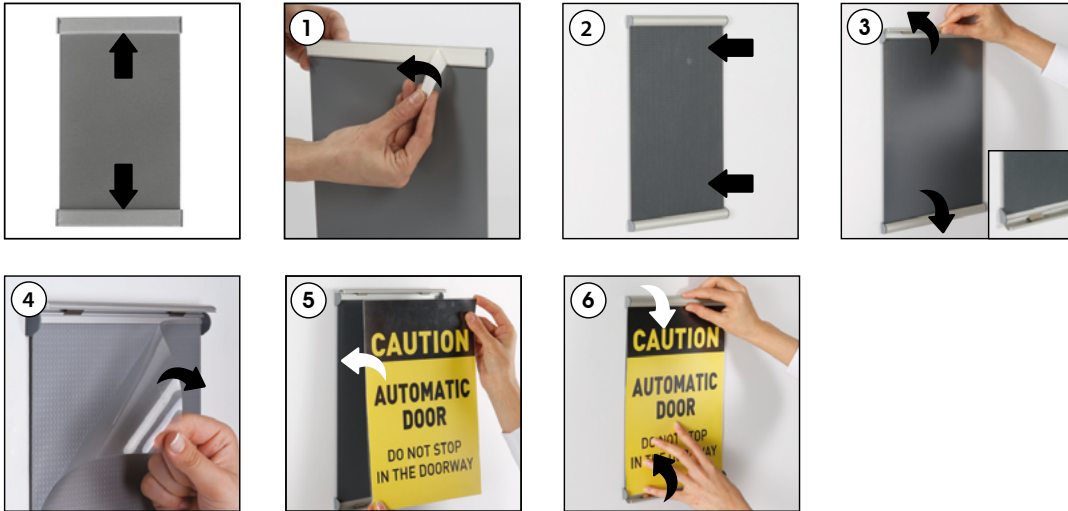
**Door Sign 0.59" - 8.5"x11"**  
Document Size: 8.89" x 11.4" (Includes Bleeds)  
Finished Size: 8.5"x11" (215.9x279.4 mm)



# INSTALLATION INSTRUCTIONS

## Door Sign 0.59" / 1005989

Each Door Sign includes adhesive tape

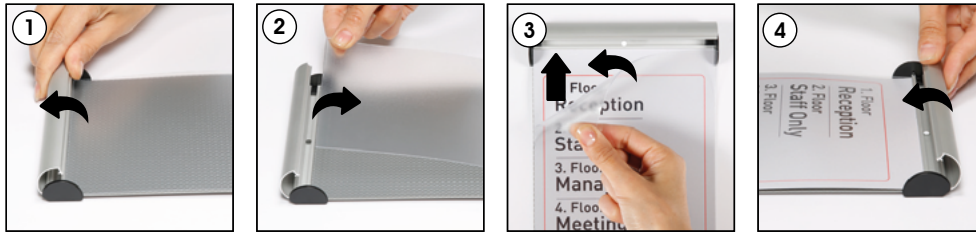


- Please inform the order number on the product or on the carton (e.g. 1/110001394-460) to the place that you have made the purchase if any problem with the product occurs.
- All rights reserved. All pictures, figures and writings are secured internationally by copy-right law. Infringements will be sued by civil and legal law.

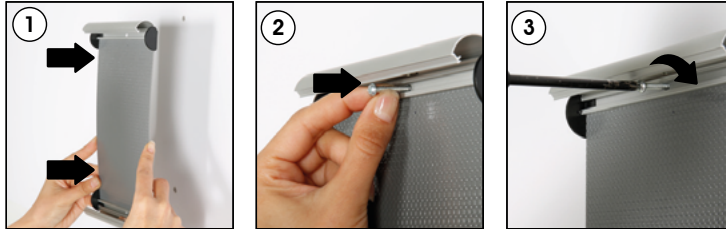


## Door Sign 1.02" / 1001872

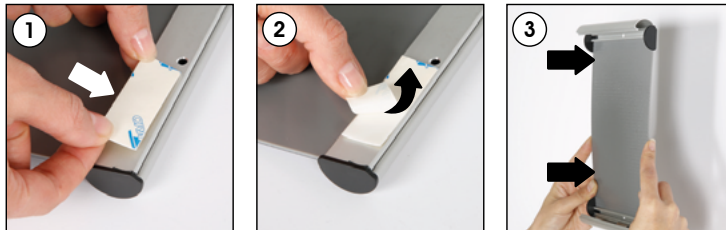
**Each Door Sign includes wall mounting accessories**  
(screws & anchors) and adhesive tape



### Screw & anchor mounting



### Adhesive tape mounting



- Please inform the order number on the product or on the carton (e.g. 1/110001394-460) to the place that you have made the purchase
- All rights reserved. All pictures, figures and writings are secured internationally by copy-right law. Infringements will be sued by civil and legal law.



This technical sheet's contents are all subject to update and modification at MT Displays' exclusive discretion. There is nothing official about this document. For final and legally binding information, please get in touch with the sales staff at MT Displays.



T: +1 855-478-0652 / [info@mtdisplaysllc.com](mailto:info@mtdisplaysllc.com) / [www.mtdisplaysllc.com](http://www.mtdisplaysllc.com)