

## DESKTOP SIGN



## CURVED WALL SIGN SYSTEM FOR WAY FINDING NEEDS

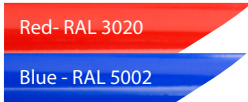
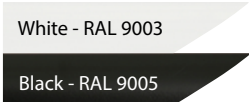
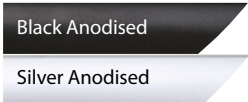
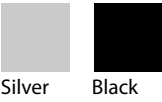
Offering a complete range, aluminium wall sign profiles are designed to enable usage on a counter to match wall signs. Desktop Sign is fixed to a convenient reading angle to be seen by the customers easily. It is suitable for receptions, restaurants, cafés, and many more. It is a practical product to change the message very often.

### KEY SELECTION ATTRIBUTES

- \* Wall sign with curved design.
- \* Ideal for wayfinding needs in buildings.
- \* Suitable for printed paper inserts.
- \* Natural silver anodised aluminium profiles.
- \* Various sizes fitting in 4 profile types.
- \* Anti-reflex and clear front cover for protection.
- \* Flat or arc endcap versions for profiles.
- \* Comes with double-sided tape and one suction cup.
- \* Horizontally curved, double-sided, suspended signs.
- \* Ideal for wayfinding and directional signs in buildings.
- \* Suitable for printed paper, plastic, or any flexible material inserts up to 1 mm thick.
- \* Natural silver anodised aluminium profiles.
- \* Single-sided profiles can be used for double-sided suspended systems.
- \* Various sizes fitting in 4 profile types.
- \* Anti-reflex and clear PET front covers ensure protection and clarity of message.
- \* Flat or arc endcap versions for profiles.
- \* Easy-to-access poster with suction cup provided in the pack.
- \* Easy to update messages.
- \* Available in standard sizes as well as bespoke sizes (subject to MOQ).
- \* For more than 5 layers, please contact your sales executive.



COLOURS IN STOCK COLOUR OPTIONS



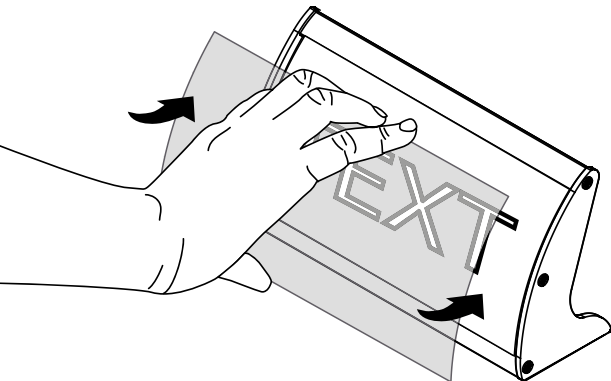
SUITABLE FOR

Wall Signs can be used for INDOOR applications, for signage needs in many locations like shopping centers, markets, groceries, hotels, offices airports, shops and stores, hospitals, schools, apartments and many more.

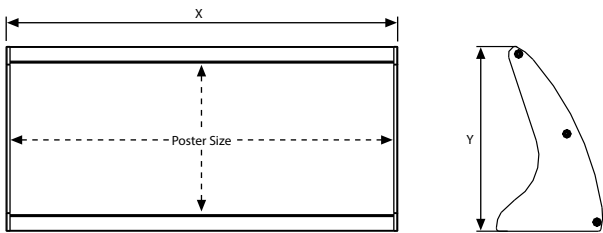
FEATURES



EXPLODED VIEW



TECHNICAL DRAWING



ARTICLES

ARTICLE	EXTERNAL (x-y)	POSTER SIZE	WEIGHT	PACKING SIZE
			WITH PACKING	*W X H X D
UMDS740N15	6.10" X 3.23"	2.91" X 5.91"	0.440 lbs	4.33" X 7.09" X 2.95"
UMDS740N20	8.07" X 3.23"	2.91" X 7.87"	0.551 lbs	4.33" X 9.06" X 2.95"
UMDS740N25	10.04" X 3.23"	2.91" X 9.84"	0.771 lbs	4.33" X 11.02" X 2.95"
UMDS105N15	6.10" X 4.33"	4.13" X 5.91"	0.551 lbs	5.51" X 6.69" X 3.35"
UMDS105N20	8.07" X 4.33"	4.13" X 7.87"	0.771 lbs	5.51" X 9.06" X 3.35"
UMDS105N25	10.04" X 4.33"	4.13" X 9.84"	0.881 lbs	5.51" X 11.02" X 3.35"
UMDS105N30	12.01" X 4.33"	4.13" X 11.81"	0.992 lbs	5.51" X 12.99" X 3.35"
UMDS148N20	8.07" X 5.83"	5.83" X 7.87"	0.881 lbs	7.09" X 9.06" X 3.74"
UMDS148N25	8.07" X 5.83"	5.83" X 9.84"	0.992 lbs	7.09" X 11.02" X 3.74"
UMDS148N30	12.01" X 5.83"	5.83" X 11.81"	1.102 lbs	7.09" X 12.60" X 3.74"

OPTIONAL ACCESSORIES



Suction Cup / UYAA006010

PHYSICAL DATA

**Material**  
0.59" silver anodised aluminium profile.  
Anti-reflex clear PET front cover.

**Poster Material & Thickness**  
0.0039" – 0.0078" for standard product. Suitable for paper inserts up to 0.039" thick for standard product. Any non-standard paper thicknesses should be indicated with order.

**Surface Finish**  
Silver anodized or black colour, antimicrobial powder coating. Custom colors also available, call for custom color requests.

**Recycled Content**  
Up to 78% recycled content used.

**Warranty**  
All products are guaranteed for 3 years by MT Displays with below conditions:  
[Warranty Conditions](#)

**Installation Considerations**  
Use the suction cup enclosed to easily remove the insert. Compatible signage methods; printed papers from common printers, cut vinyl, digitally printed vinyl, screen-printed materials.

**Storage Conditions**  
Goods should be stored at 32°F to 77°F in a dry place. Store in the original package.

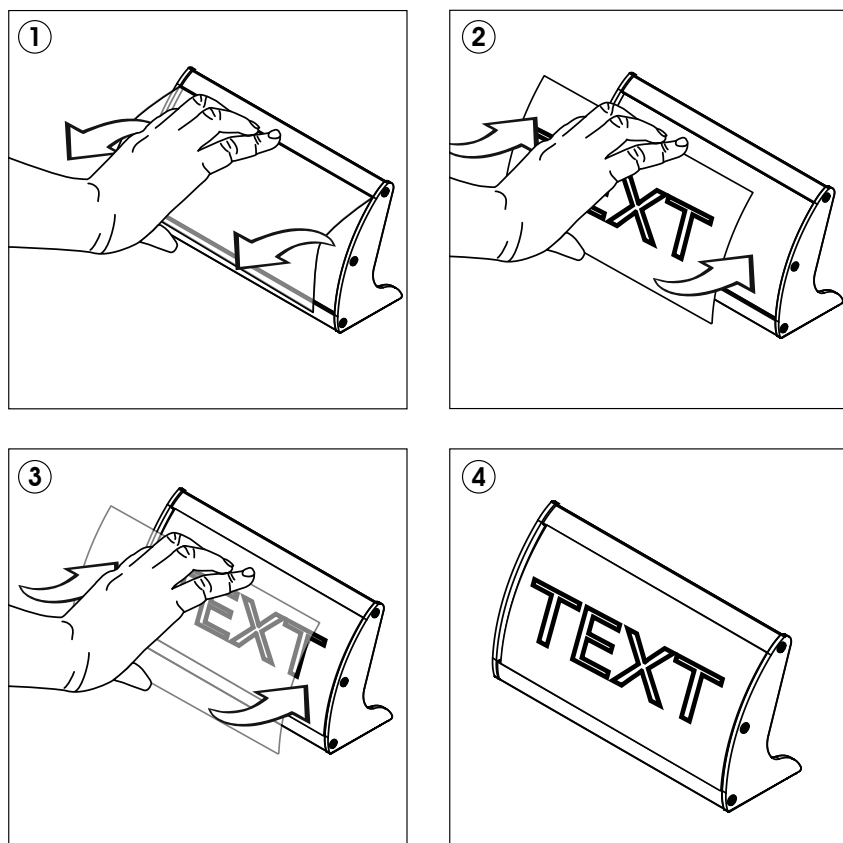
**Design Considerations**  
Compatible signage methods; printed papers from common, printers, cut vinyl, digitally printed vinyl, screen-printing. Please clean the surface before applying the double-sided tape for better application.

**Cleaning and Disinfecting**  
Clean your displays, with damp microfiber clothes, rinsed with simply water or warm, soapy or gentle shampooed water. Avoid using vinegar, abrasive, acidic, alcohol-based or heavy cleaners or cleaners containing Ammonia. Only after cleaning the product, if needed, simply apply disinfectant or sanitizer that is in compliance with your local guidelines and regulations.



# INSTALLATION INSTRUCTIONS

Desktop Sign / 1007605



- Please inform the order number on the product or on the carton (e.g. 1/110001394-460) to the place that you have made the purchase if any problem with the product occurs.
- All rights reserved. All pictures, figures and writings are secured internationally by copy-right law. Infringements will be sued by civil and legal law.

This technical sheet's contents are all subject to update and modification at MT Displays' exclusive discretion. There is nothing official about this document. For final and legally binding information, please get in touch with the sales staff at MT Displays.



T: +1 855-478-0652 / [info@mtdisplaysllc.com](mailto:info@mtdisplaysllc.com) / [www.mtdisplaysllc.com](http://www.mtdisplaysllc.com)