

CLASSICAL MENUBOARD



PRACTICAL & EASY MENUBOARD WITH A SIGHT ANGLE

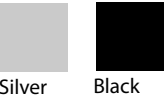
The Menuboard with a sight angle that catches the eye level. It is available in the sizes 11" X 17" and 8.5" X 11" both in landscape & portrait positions. The height of this model is 39.37".

KEY SELECTION ATTRIBUTES

- * Custom sizes options ranging from a minimum of 8.5" X 11" to a maximum of 11" X 17" landscape.
- * Classical Menuboard with optional brochure holder.
- * Suitable for poster sizes 11" X 17" and 8.5" X 11" in portrait and landscape positions.
- * One set includes a powder coated steel base with plastic cover, aluminium profile body and a snap-open poster frame with a sight angle that catches the eye level.
- * Natural silver-anodized and various RAL colors available with antimicrobial powder coating.
- * The steel base provides stability, suitable for wet floors.
- * Packed unassembled in a sturdy box.



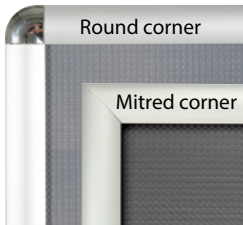
COLOURS IN STOCK



SUITABLE FOR

Menuboards can be used for INDOOR applications, for signage needs in many locations like shopping centers, markets, groceries, hotels, offices airports, shops and stores, hospitals, schools, apartments and many more.

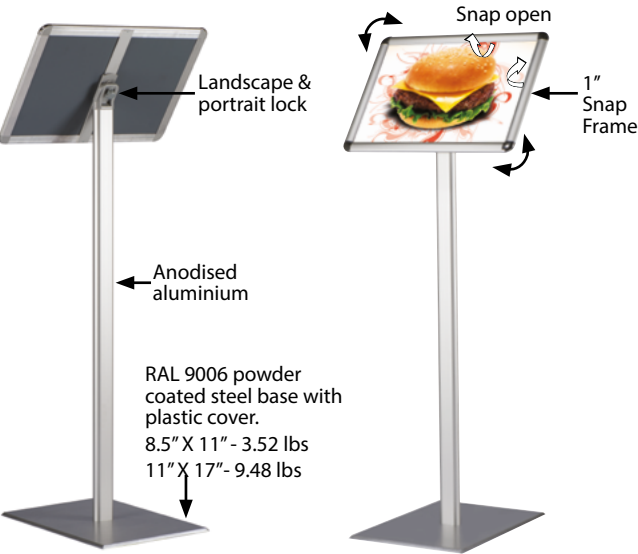
CORNER TYPES



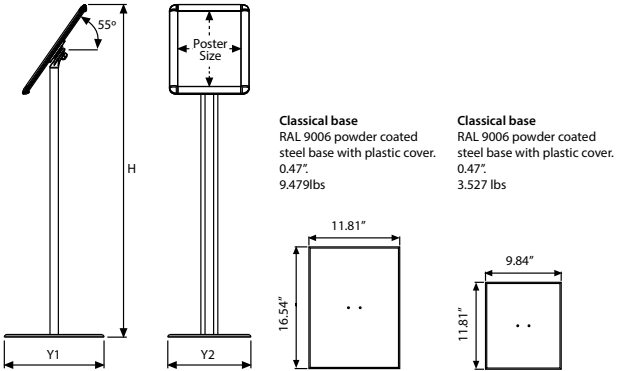
FEATURES



EXPLODED VIEW



TECHNICAL DRAWING



ARTICLES

MITRED ARTICLE	ROUND ARTICLE	EXTERNAL (x-y)	POSTER	COPY	Y1	Y2	HEIGHT	DESCRIPTION	WEIGHT	PACKING SIZE
									WITH PACKING	*W X H X D
UCMB1N0581	UCMB1N0081	9.68" X 12.18"	8.5" X 11"	7.79" X 10.29"	11.81"	9.84"	38.70"	Portrait	7.495 lbs	11.42" X 38.58" X 2.56"
					11.81"	9.84"	38.19"	Landscape		
UCMB1N0517	UCMB1N0017	12.18" X 18.18"	11" X 17"	10.29" X 16.29"	16.54"	11.81"	47.72"	Portrait	12.897 lbs	14.96" X 45.28" X 2.56"
					16.54"	11.81"	44.61"	Landscape		

OPTIONAL ACCESSORIES



Adapter for 8.5" X 11"
Brochure Holder (30 Pcs) /
UYPMBH00A4
Adapter for 5.83" x 8.27"
Brochure Holder (45 Pcs) /
UYPMBH00A5



8.5" X 11"
Brochure
Holder (30 Pcs)
UMSDMB00A4



5.83" x 8.27"
Brochure
Holder (45 Pcs)
UMSDMB00A5



T: +1 855-478-0652 / info@mtdisplaysllc.com / www.mtdisplaysllc.com

PHYSICAL DATA

Material

1"x2" aluminium ellipse profile body, snap-open aluminium profile poster frame, PET anti-reflex poster cover, PS backing or ABS backing. Acrylic optional shelves.

Poster Material & Thickness

0.0039" – 0.0078" for standard product. Max poster thickness 0.078" for mitred corner, 0.039" for round corner. Any non-standard poster thicknesses should be indicated with order.

Surface Finish

Silver anodized or black colour, antimicrobial powder coating. Custom colors also available, call for custom color requests.

Recycled Content

Up to 78% recycled content used.

Warranty

All products are guaranteed for 3 years by MT Displays with below conditions:
[Warranty Conditions](#)

Installation Considerations

Menuboard are packed unassembled in a sturdy box with an easy-to-understand instruction sheet & fixing elements. One set includes a powder coated steel base with plastic cover, aluminium profile body and a snap-open poster frame with a sight angle that catches the eye level. Optional brochure holder and adapter should be ordered seperately.

When the nut on the back of frame is loose, frame can be placed in either portrait or landscape position.

Storage Conditions

Goods should be stored at 32°F to 77°F in a dry place. Store in the original package.

Design Considerations

Suitable for silk screen printing, max. letter height is 0.59". Suitable for 11" X 17" and 8.5" X 11" poster sizes in Landscape and Portrait positions with a sight angle that catches the eye level. The steel base provides stability, suitable for wet floors.

Cleaning and Disinfecting

Clean your displays, with damp microfiber clothes, rinsed with simply water or warm, soapy or gentle shampooed water. Avoid using vinegar, abrasive, acidic, alcohol-based or heavy cleaners or cleaners containing Ammonia. Only after cleaning the product, if needed, simply apply disinfectant or sanitizer that is in compliance with your local guidelines and regulations.

PRINT TEMPLATES

Classical Menuboard - 8.5"x11"

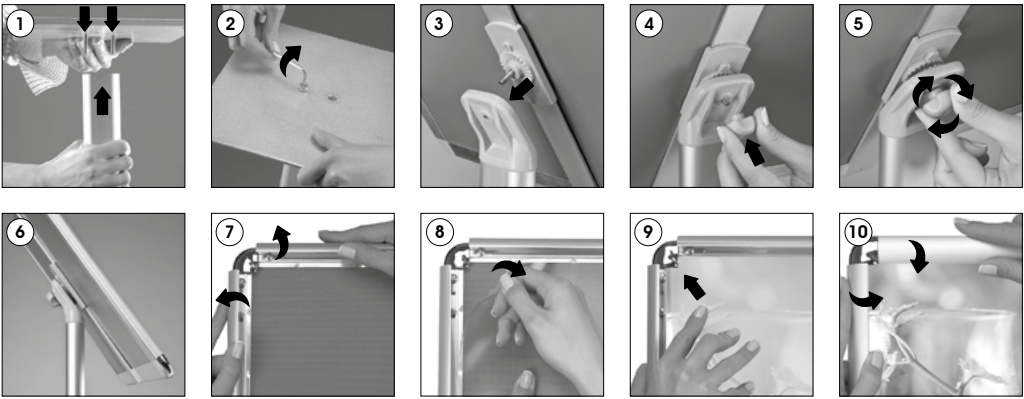
Document Size: 8.89" x 11.4" (Includes Bleeds)
Finished Size: 8.5" x 11" (279.4 x 431.8 mm)

Classical Menuboard - 11"x17"

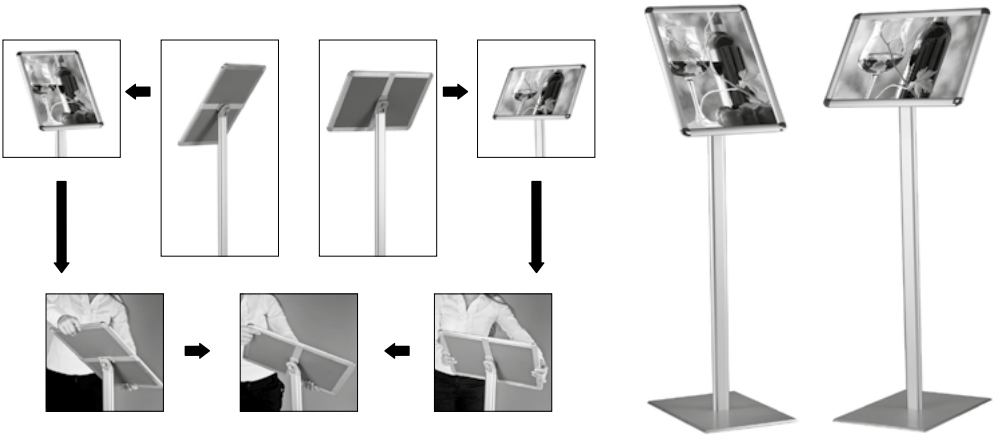
Document Size: 11.4" x 17.4" (Includes Bleeds)
Finished Size: 11" x 17" (279.4 x 431.8 mm)

INSTALLATION INSTRUCTIONS

Classical Menubard / 1007025



One product two positions (landscape&portrait)



• Please inform the order number on the product or on the carton (e.g. 1/110001394-460) to the place that you have made the purchase if any problem with the product occurs.
• All rights reserved. All pictures, figures and writings are secured internationally by copy-right law. Infringements will be sued by civil and legal law.

This technical sheet's contents are all subject to update and modification at MT Displays' exclusive discretion. There is nothing official about this document. For final and legally binding information, please get in touch with the sales staff at MT Displays.

