

BESY BUY LEDBOX SINGLE SIDED



LONG LASTING AND COST SAVING AD SIGNS WITH HOMOGENOUS ILLUMINATION

Very slim single sided Best Buy LEDbox with 0.71" thickness is an ideal choice for wide range of indoor applications. High illumination is achieved by specially treated acrylic and provides a homogenous illumination. Homogenous and brilliant Best Buy LEDbox will get the attention of consumers easily wherever it is mounted.

KEY SELECTION ATTRIBUTES

- Single-sided, wall hanging, edge-lit lightbox with easy and slim snap open frame and long lasting LED technology bulbs.
- One of the thinnest lightboxes in the market with 0.71" depth.
- Suitable for 11"x17", 20"x30", 24"x36", 30"x40" size posters in portrait and landscape position.
- Suitable for INDOOR applications for high-traffic areas, because it doesn't obstruct walking paths.
- High illumination is achieved by specially treated acrylic and provides homogenous illumination.
- LED bulbs are not seen from outside, since they are embedded in sides of the frame.
- Translucent poster material should be used for printing the signage.
- Gives an impressive effect to grab the passers-by.
- Besides being less expensive, saves up to 60% energy costs, resulting in cost saving both initially and after overall usage.
- Supplied with quality certificates and CE/UL PAT test reports passed.
- Black and natural silver-anodized in standard and various RAL colors available with antimicrobial powder coating.
- One set includes a single sided 1" snap open frame with 0.71" depth and embedded LED bulbs, specially treated acrylic non-glare PET lens to diffuse light across graphics, 1 anti-reflex PET poster cover, 2 wall hangers, 4 screws, 4 anchors, 1 power adapter (12V-2A), 137.8" long cable and 1 EU Plug. UK and US plugs are available, should be specified with order.
- Optional dimmer is available. Adjusting the light from dark to max lux of LED illuminated frame.
- Easy to load and re-load posters, with easy snap open framing. Simply snap up all four sides of the frame and easily insert your poster or take out.
- Packed unassembled with an easy mounting instruction sheet & fixing set
- Has no switch, supplied with built-in powersupply, helping long product life.
- For using LED frame 24 hours in 7 days, please ask for special 7/24 power supplies.



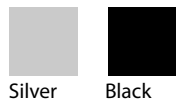
Silver



Black



COLOURS IN STOCK



Silver Black

COLOUR OPTIONS

Black Anodised

Silver Anodised

Black - RAL 9005

White - RAL 9003

Red- RAL 3020

Blue - RAL 5002

Green - RAL 6029

Yellow - RAL 1021

CORNER TYPES



WATCH VIDEO

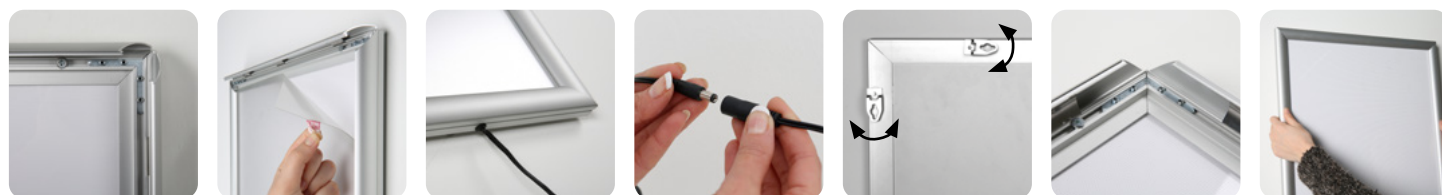


Watch video at our website
www.mtdisplaysllc.com

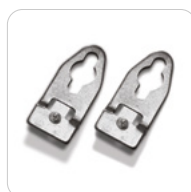
SUITABLE FOR

Best Buy LEDbox can be used for a wide range of INDOOR applications, for signage needs in many locations like retail point-of-purchase, tradeshow displays, movie theatres, sports facilities, shopping malls, markets, groceries, hotels, airports, shops and stores, hospitals, restaurants, halls, meeting, rooms, gas stations, casinos, and more.

FEATURES

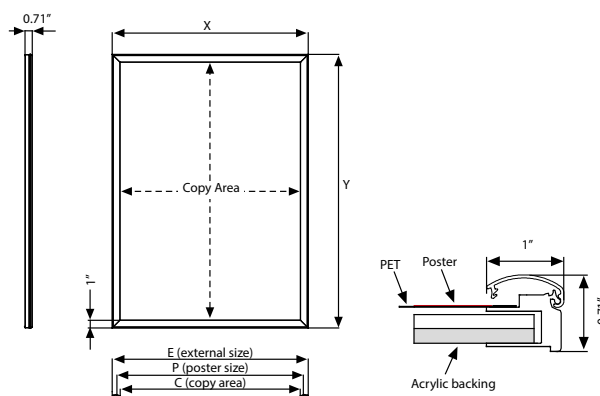


EXPLODED VIEW



2 wall hangers are standard in each product. Moving hangers let the mounting in portrait and landscape position.

TECHNICAL DRAWING



ARTICLES

SILVER	BLACK	EXTERNAL (x-y)	POSTER SIZE	COPY	LIGHTING	WEIGHT	PACKING SIZE
						WITH PACKING	*W X H X D
ULB25TN017	ULB25TB017	12.20" X 18.19"	11" X 17"	10.20" X 16.18"	2800-3000 LUX	4.034 lbs	12.80" X 21.06" X 1.38"
ULB25TN022	ULB25TB022	23.19" X 29.21"	22" X 28"	21.18" X 27.20"	2000-2200 LUX	8.179 lbs	23.82" X 33.27" X 1.38"
ULB25TN023	ULB25TB023	21.18" X 31.18"	20" X 30"	19.17" X 29.17"	2200-2500 LUX	8.399 lbs	21.85" X 33.86" X 1.38"
ULB25TN024	ULB25TB024	25.20" X 37.20"	24" X 36"	23.19" X 35.20"	1900-2100 LUX	14.374 lbs	25.79" X 39.96" X 1.38"
ULB25TN034	ULB25TB034	31.18" X 41.18"	30" X 40"	29.17" X 39.17"	1700-2000 LUX	15.807 lbs	31.89" X 43.90" X 1.38"

OPTIONAL ACCESSORIES



Optional dimmer to go with LED illuminated frame.. Simply jack the dimmer in frame and then into powersupply. It adjust the light from dark to max lux of LED illuminated frame.
UYUP445550



T: +1 855-478-0652 / info@mtdisplaysllc.com / www.mtdisplaysllc.com

PHYSICAL DATA

Material

1" aluminium profile snap open frame with 0.71" depth, PET anti-reflex poster cover, acrylic backing, LED bulbs.

Poster Material & Thickness

0.004" – 0.01" for standard product. Max poster thickness 0.08". Any non-standard poster thicknesses should be indicated with order.

Surface Finish

Black or natural silver-anodized in standard and various RAL colors available with antimicrobial powder coating. Call for custom color requests.

Recycled Content

Up to 78% recycled content used.

Warranty

All products are guaranteed for 3 years by MT Displays with below conditions:

[Warranty Conditions](#)

Storage Conditions

Goods should be stored at 32° to 77°F in a dry place.

Store in the original package.

Installation Considerations

Best Buy LEDbox Single Sided is packed unassembled with an easy mounting instruction sheet & fixing set. Supplied with quality certificates and CE/UL PAT test reports passed. One set includes a single sided 1" snap open frame with 0.71" depth and embedded LED bulbs, specially treated acrylic non-glare PET lens to diffuse light across graphics, 1 anti-reflex PET poster cover, 2 wall hangers, 4 screws, 4 anchors, 1 power adapter (12V-2A), 137.8" long cable and 1 EU Plug. UK and US plugs are available, should be specified with order. Has no switch, supplied with built-in powersupply, helping long product life. Optional dimmer is available, adjusting the light from dark to max lux of LED illuminated frame. For using LED frame 24 hours in 7 days, please ask for special 7/24 power supplies. Suitable for maximum 35°C Indoor temperature (incl. daily sunny hours.) It should be assembled 11.81" from the window.

Design Considerations

Single-sided, wall hanging, edge-lit lightbox with easy and slim snap open frame and long lasting LED technology bulbs. One of the thinnest lightboxes in the market with 0.71" depth. Suitable for 11"x17", 20"x30", 24"x36", 30"x40" size posters in portrait and landscape position. Suitable for INDOOR applications for high-traffic areas, because it doesn't obstruct walking paths. High illumination is achieved by specially treated acrylic and provides homogenous illumination. LED bulbs are not seen from outside, since they are embedded in sides of the frame. Translucent poster material should be used for printing the signage. Gives an impressive effect to grab the passers-by. Besides being less expensive, saves up to 60% energy costs, resulting in cost saving both initially and after overall usage. Easy to load and re-load posters, with easy snap open framing. Simply snap up all four sides of the frame and easily insert your poster or take out. Suitable for silk screen printing, max. letter height is 0.59".

Cleaning and Disinfecting

Clean your displays, with damp microfiber clothes, rinsed with simply water or warm, soapy or gentle shampooed water. Avoid using vinegar, abrasive, acidic, alcohol-based or heavy cleaners or cleaners containing Ammonia. Only after cleaning the product, if needed, simply apply disinfectant or sanitizer that is in compliance with your local guidelines and regulations.

PRINT TEMPLATES

Best Buy LEDbox Single Sided - 11"x17"

Document Size: 11.4" x 17.4" (Includes Bleeds)

Finished Size: 11"x17" [Print](#)

Best Buy LEDbox Single Sided - 22"x28"

Document Size: 22.4" x 28.4" (Includes Bleeds)

Finished Size: 22"x28" [Print](#)

Best Buy LEDbox Single Sided - 30"x40"

Document Size: 30.4" x 40.4" (Includes Bleeds)

Finished Size: 30"x40" [Print](#)

Best Buy LEDbox Single Sided - 20"x30"

Document Size: 20.4" x 30.4" (Includes Bleeds)

Finished Size: 20"x30" [Print](#)

Best Buy LEDbox Single Sided - 24"x36"

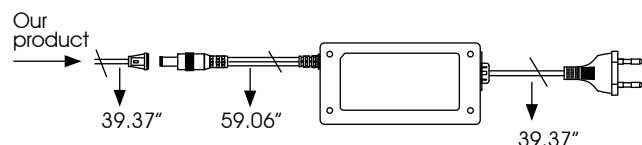
Document Size: 24.4" x 36.4" (Includes Bleeds)

Finished Size: 24"x36" [Print](#)

ILLUMINATED PRODUCTS TECHNICAL MANUAL

POWER SUPPLY

- 12 V DC
- Complete with power supply
- 2 year guaranteed
- 7/16 use
- If 7/24 use required, please order individually.



CABLE

Delivered with 137.8" long cable and EU plug. UK, US or CH plugs should be specified with order.

Extension cable: 0.04", 0.08", 0.12".

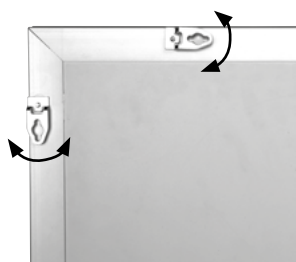


TECHNICAL SPECIFICATION

Max: 33.46" X 78.74"

ARTICLE	POSTER	ACRYLIC THICKNESS	ILLUMINATION	POWER CONSUMPTION	POWER SUPPLY RECOMMENDED
ULB25TN017	280 X 432 mm	3 mm	2800 - 3000 LUX	10 W / 0.84 A	1 A
ULB25TN022	559 X 712 mm	3 mm	2000 - 2200 LUX	17.6 W / 1.5 A	2 A
ULB25TN023	508 X 762 mm	3 mm	2200 - 2500 LUX	17 W / 1.41 A	2 A
ULB25TN024	610 X 915 mm	4 mm	1900 - 2100 LUX	22.5 W / 1.9 A	3 A
ULB25TN034	762 X 1016 mm	4 mm	1700 - 2000 LUX	25 W / 2.08 A	3 A

HANGER



2 wall hangers are standard in each product. Moving hangers let the mounting in portrait and landscape position.

LED FEATURES (Duris E 2835)

Led dimentions: 0.12" x 0.06"

Processing technology: White SMT package, colored diffused silicone resin

Viewing angle at 50 % IV: 120°

Color: 2700 K - 6500 K (warm, neutral and cool white)

CRI: 84 - 88

Luminous flux: Typ. 30 lm @ 6500K

Luminous efficacy: Typ. 153 lm / W @ 6500 K

Lumen maintenance: Typ. 169 lm / A @ 6500 K

Life time: 50.000 hours



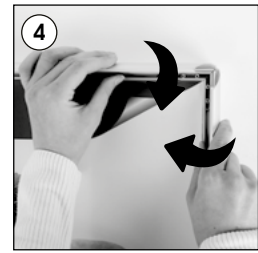
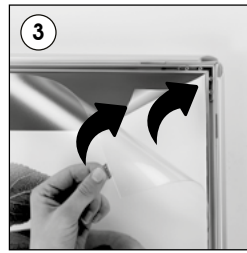
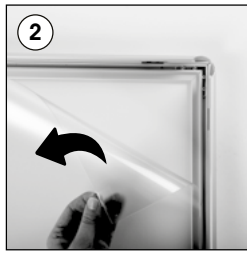
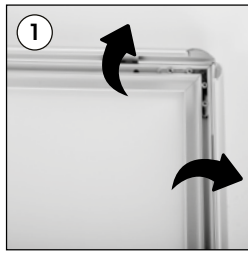
T: +1 855-478-0652 / info@mtdisplaysllc.com / www.mtdisplaysllc.com

INSTALLATION INSTRUCTIONS

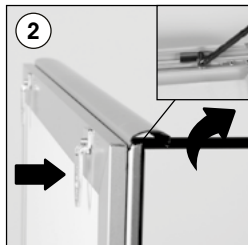
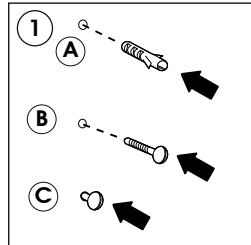
Best Buy LEDbox Single Sided / 1009843H000

Each product package includes

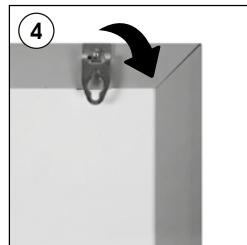
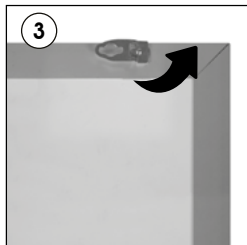
- 1 x PET cover
- 2 x Hanger
- 4 x Screw
- 4 x Anchor
- 1 x Power Adapter 12V-2A
- 1 x EU Plug



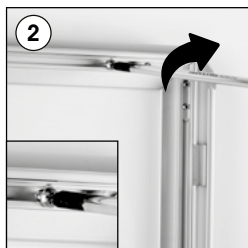
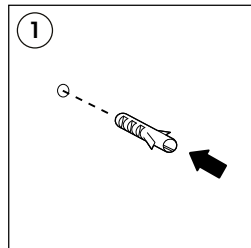
Hanger mounting



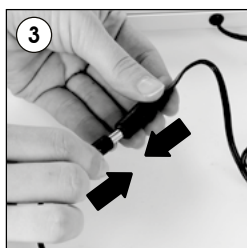
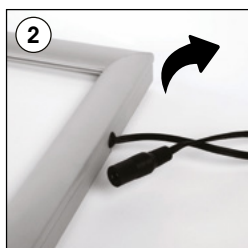
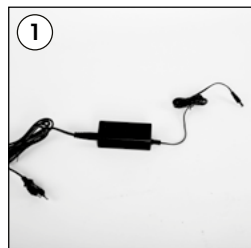
Landscape or portrait positions



Screw & anchor mounting



Power Supply Usage



Caution !

- 1- Do not step on the light panel nor place the heavy object on the light panel.
- 2- Do not pull the cable with excessive force.
- 3- Use correct capacity and voltage of D.C. power supply.
Failure to observe this instruction could result in breakdown.
- 4- Do not touch the light panel or electrical devices with wet hand.
Failure to observe this instruction could result in electrical shocks and severe injuries.
- 5- Do not subject this light panel to outdoor, high humid and vaporized area.
Failure to observe this instruction could result in breakdown.
- 6- Keep this out of the direct rays of the sun.
Failure to observe this instruction could result in color changes of acrylic plate.
- 7- Keep away from fire or severe hot place. Acceptable ambient temperature is max.35°C
Failure to observe this instruction could result in shorten the life time and degradation of brightness of LED light source.

• Please inform the order number on the product or on the carton (e.g. 1/110001394-460) to the place that you have made the purchase if any problem with the product occurs.

This technical sheet's contents are all subject to update and modification at MT Displays' exclusive discretion. There is nothing official about this document. For final and legally binding information, please get in touch with the sales staff at MT Displays.



T: +1 855-478-0652 / info@mtdisplaysllc.com / www.mtdisplaysllc.com