

BEST BUY LEDBOX DOUBLE SIDED



LONG LASTING AND COST SAVING AD SIGNS WITH HOMOGENOUS ILLUMINATION

Very slim double sided Best Buy LEDbox with 1.18" thickness is an ideal choice for wide range of indoor applications. High illumination is achieved by specially treated acrylic and provides a homogenous illumination. Homogenous and bright Best Buy LEDbox will get the attention of consumers easily wherever it is mounted.

KEY SELECTION ATTRIBUTES

- * Double-sided, ceiling hanging, edge-lit lightbox with easy and slim snap open frame and long lasting LED technology bulbs.
- * One of the thinnest double-sided lightboxes in the market with 1.18" depth.
- * Suitable for 11"x17", 20"x30", 22"x28", 24"x36", 30"x40" size posters in portrait and landscape position.
- * Suitable for INDOOR applications for high-traffic areas, because it doesn't obstruct walking paths.
- * High illumination is achieved by specially treated acrylic and provides homogenous illumination.
- * LED bulbs are not seen from outside, since they are embedded in sides of the frame.
- * Translucent poster material should be used for printing the signage.
- * Gives an impressive effect to grab the passers-by.
- * Besides being less expensive, saves up to 60% energy costs, resulting in cost saving both initially and after overall usage.
- * Supplied with quality certificates and CE/UL PAT test reports passed.
- * Natural silver-anodized in standard and various RAL colors available with antimicrobial powder coating.
- * One set includes a double-sided 0.98" snap open frame with 1.18" depth and embedded LED bulbs; specially treated acrylic non-glare PET lens to diffuse light across graphics; 2 anti-reflex PET poster covers; a standard hanging kit composed of 2 pieces of 2 meters long wire cables and 2 ceiling hangers; 2 M5 hangers, 2 screws, 2 anchors, 1 power adapter (12V-2A) with 137.8" long cable and 1 EU Plug. UK and US plugs are available, should be specified with order.
- * Optional dimmer is available. Adjusting the light from dark to max lux of LED illuminated frame. Simply jack the dimmer in frame and then into power supply.
- * Easy to load and re-load posters, with easy snap open framing. Simply snap up all four sides of the frame and easily insert your poster or take out.
- * Packed unassembled with an easy mounting instruction sheet & fixing set
- * Has no switch, supplied with built-in powersupply, helping long product life.
- * For using LED frame 24 hours in 7 days, please ask for special 7/24 power supplies.



Portrait



Landscape



COLOURS IN STOCK



Silver

COLOUR OPTIONS

Black Anodised

Silver Anodised

Black - RAL 9005

White - RAL 9003

Red- RAL 3020

Blue - RAL 5002

Green - RAL 6029

Yellow - RAL 1021

CORNER TYPES



WATCH VIDEO



Watch video at our website
www.mtdisplaysllc.com

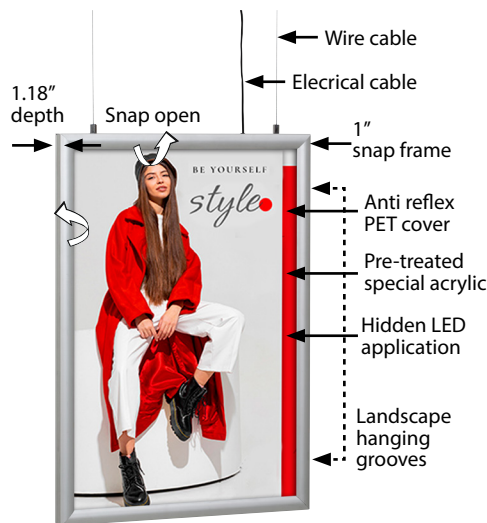
SUITABLE FOR

Double Sided Best Buy LEDboxes can be used for a wide range of INDOOR applications, for signage needs in many locations like retail point-of-purchase, tradeshow displays, movie theatres, sports facilities, shopping malls, markets, groceries, hotels, airports, shops and stores, hospitals, restaurants, halls, meeting, rooms, gas stations, casinos, and more.

FEATURES

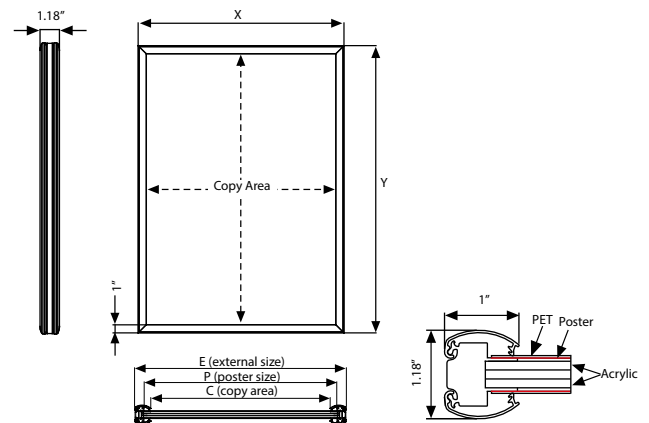


EXPLODED VIEW



Standard hanging kit for all sizes: 78.74" x 2 pcs wire cable and 2 ceiling hangers.

TECHNICAL DRAWING



ARTICLES

ARTICLE	EXTERNAL (x-y)	POSTER SIZE	COPY	LIGHTING	WEIGHT	PACKING SIZE
					WITH PACKING	*W X H X D
ULB25CN017	12.20" X 18.19"	11" X 17"	10.20" X 16.18"	2400-2600 LUX	5.180 lbs	12.80" X 21.06" X 1.38"
ULB25CN022	23.19" X 29.21"	22" X 28"	21.18" X 27.20"	1900-2100 LUX	12.698 lbs	23.82" X 33.27" X 1.38"
ULB25CN023	21.18" X 31.18"	20" X 30"	19.17" X 29.17"	2000-2200 LUX	12.456 lbs	21.85" X 33.86" X 1.38"
ULB25CN024	25.20" X 37.20"	24" X 36"	23.19" X 35.20"	1800-2000 LUX	18.783 lbs	25.79" X 39.96" X 1.38"
ULB25CN034	31.18" X 41.18"	30" X 40"	29.17" X 39.17"	1600-1800 LUX	24.647 lbs	31.89" X 43.90" X 1.38"

OPTIONAL ACCESSORIES



Optional dimmer to go with LED illuminated frame.. Simply jack the dimmer in frame and then into powersupply. It adjust the light from dark to max lux of LED illuminated frame.
UYUP445550



T: +1 855-478-0652 / info@mtdisplaysllc.com / www.mtdisplaysllc.com

PHYSICAL DATA

Material

1" aluminum profile snap open frame with 1.18" depth, PET anti-reflex poster cover, acrylic backing, LED bulbs.

Poster Material & Thickness

0,10 – 0,20 mm for standard product. Max poster thickness 2 mm. Any non-standard poster thicknesses should be indicated with order.

Surface Finish

Natural silver-anodized in standard and various RAL colors available with antimicrobial powder coating. Call for custom color requests.

Recycled Content

Up to 78% recycled content used.

Warranty

All products are guaranteed for 2 years by MT Displays with below conditions:

[Warranty Conditions](#)

Storage Conditions

Goods should be stored at 0° to 25°C in a dry place. Store in the original package.

Installation Considerations

Best Buy LEDbox Double Sided is packed unassembled with an easy mounting instruction sheet & fixing set. Supplied with quality certificates and CE/UL PAT test reports passed. One set

includes a double-sided 1" snap open frame with 1.18" depth and embedded LED bulbs; specially treated acrylic non-glare PET lens to diffuse light across graphics; 2 anti-reflex PET poster covers; a standard hanging kit composed of 2 pieces of 78.74" long wire cables and 2 ceiling hangers; 2 M5 hangers, 2 screws, 2 anchors, 1 power adapter (12V-2A) with 137.8" long cable and 1 EU Plug. UK and US plugs are available, should be specified with order. Has no switch, supplied with built-in powersupply, helping long product life. Optional dimmer is available, adjusting the light from dark to max lux of LED illuminated frame. For using LED frame 24 hours in 7 days, please ask for special 7/24 power supplies. Suitable for maximum 35°C indoor temperature (incl. daily sunny hours.) It should be assembled 1.18" from the window.

Design Considerations

Double-sided, ceiling hanging, edge-lit lightbox with easy and slim snap open frame and long lasting LED technology bulbs. One of the thinnest double-sided lightboxes in the market with 30mm depth. Suitable for 11"x17", 20"x30", 22"x28", 24"x36", 30"x40" size posters in portrait and landscape position. Suitable for INDOOR applications for high-traffic areas, because it doesn't obstruct walking paths. High illumination is achieved by specially treated acrylic and provides homogenous illumination. LED bulbs are not seen from outside, since they are embedded in sides of the frame. Translucent poster material should be used for printing the signage. Gives an

impressive effect to grab the passers-by. Besides being less expensive, saves up to 60% energy costs, resulting in cost saving both initially and after overall usage. Easy to load and re-load posters, with easy snap open framing. Simply snap up all four sides of the frame and easily insert your poster or take out. Suitable for silk screen printing, max. letter height is 0.59".

Cleaning and Disinfecting

Clean your displays, with damp microfiber clothes, rinsed with simply water or warm, soapy or gentle shampooed water. Avoid using vinegar, abrasive, acidic, alcohol-based or heavy cleaners or cleaners containing Ammonia. Only after cleaning the product, if needed, simply apply disinfectant or sanitizer that is in compliance with your local guidelines and regulations.

Hazardous Substances

M&T Displays prioritizes compliance with the REACH (Registration, Evaluation, Authorisation and Restriction of Chemicals) and RoHS (Restriction of Hazardous Substances) directives to protect both the environment and human health. We ensure that our products do not contain substances listed under REACH and adhere to strict RoHS limits for hazardous materials. Our manufacturing process ensures that lead, mercury, cadmium, and other restricted substances remain within the permitted thresholds, guaranteeing safe and sustainable products for our customers.

PRINT TEMPLATES

Best Buy LEDbox Double Sided - 11"x17"

Document Size: 11.4" x 17.4" (Includes Bleeds)

Finished Size: 11"x17" [Print](#)

Best Buy LEDbox Double Sided - 20"x30"

Document Size: 20.4" x 30.4" (Includes Bleeds)

Finished Size: 20"x30" [Print](#)

Best Buy LEDbox Double Sided - 22"x28"

Document Size: 22.4" x 28.4" (Includes Bleeds)

Finished Size: 22"x28" [Print](#)

Best Buy LEDbox Double Sided - 24"x36"

Document Size: 24.4" x 36.4" (Includes Bleeds)

Finished Size: 24"x36" [Print](#)

Best Buy LEDbox Double Sided - 30"x40"

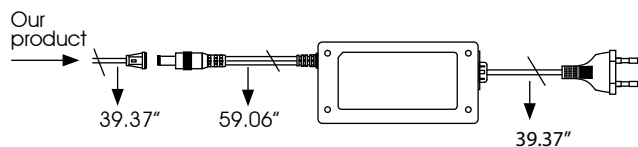
Document Size: 30.4" x 40.4" (Includes Bleeds)

Finished Size: 30"x40" [Print](#)

ILLUMINATED PRODUCTS TECHNICAL MANUAL

POWER SUPPLY

- 12 V DC
- Complete with power supply
- 2 year guaranteed
- 7/16 use
- If 7/24 use required, please order individually.



HANGER



2 wall hangers are standard in each product. Moving hangers let the mounting in portrait and landscape position.

TECHNICAL SPECIFICATION

Max: 33.46" X 78.74"

ARTICLE	POSTER	ACRYLIC THICKNESS	ILLUMINATION	POWER CONSUMPTION	POWER SUPPLY RECOMMENDED
ULB25CN017	11" X 17"	0.12"	2400 - 2600 LUX	16.6 W / 1.22 A	2 A
ULB25CN022	22" X 28"	0.12"	1900 - 2100 LUX	24 W / 2 A	3 A
ULB25CN023	20" X 30"	0.12"	2000 - 2200 LUX	26 W / 2.16 A	3 A
ULB25CN024	24" X 36"	0.16"	1800 - 2000 LUX	31 W / 2.6 A	3 A
ULB25CN034	30" X 40"	0.16"	1600 -1800 LUX	36 W / 3.02 A	4 A

LED FEATURES (Duris E 2835)

Led dimentions: 0.12" x 0.06"
Processing technology: White SMT package, colored diffused silicone resin
Viewing angle at 50 % IV: 120°
Color: 2700 K - 6500 K (warm, neutral and cool white)
CRI: 84 - 88
Luminous flux: Typ. 30 lm @ 6500K
Luminous efficacy: Typ. 153 lm / W @ 6500 K
Lumen maintenance: Typ. 169 lm / A @ 6500 K
Life time: 50.000 hours



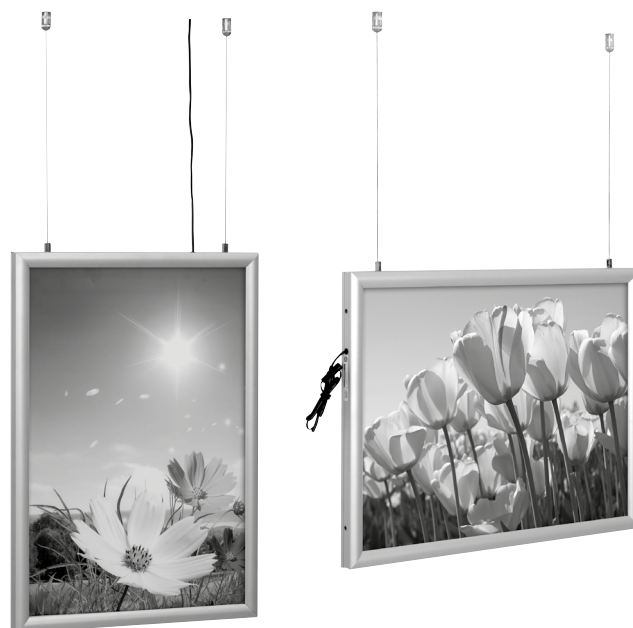
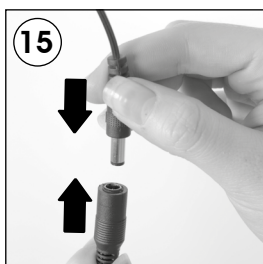
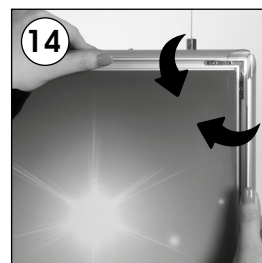
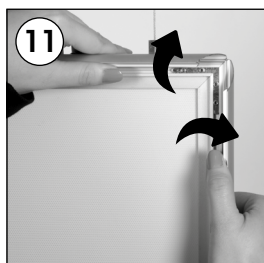
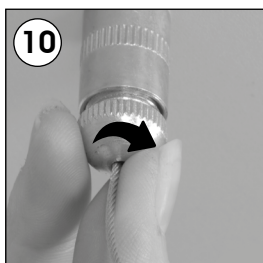
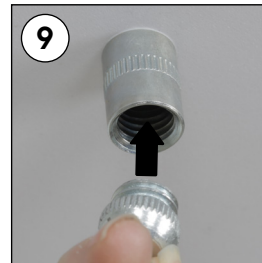
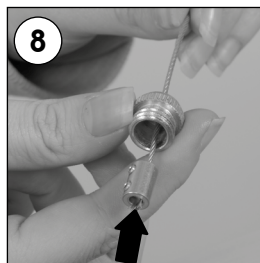
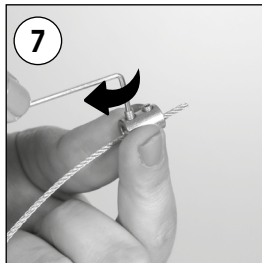
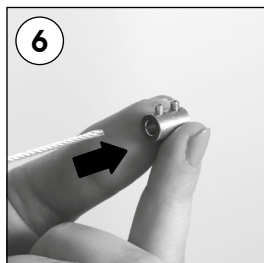
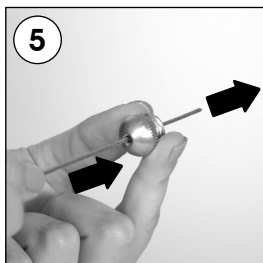
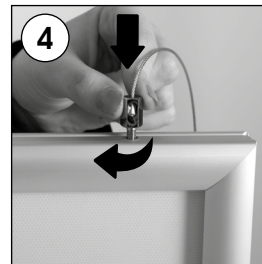
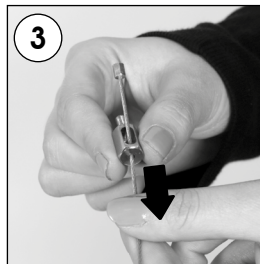
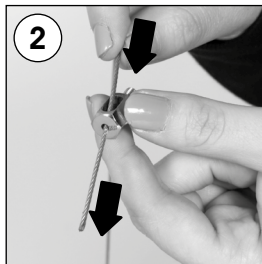
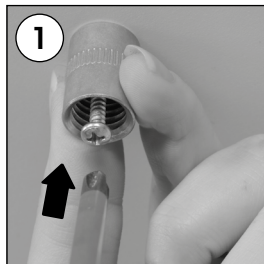
T: +1 855-478-0652 / info@mtdisplaysllc.com / www.mtdisplaysllc.com

INSTALLATION INSTRUCTIONS

Best Buy LEDbox Double Sided / 1010010H000

Each product includes

- 1 x EU plug
- 1 x Jack cable
- 2 x Wire cable 2mt
- 2 x Ceiling hanger set
- 2 x Hanger M5
- 1 x Power supply 12V
- 2 x Screw
- 2 x Anchor



Caution !

- 1- Do not step on the light panel nor place the heavy object on the light panel.
- 2- Do not pull the cable with excessive force.
- 3- Use correct capacity and voltage of D.C. power supply. Failure to observe this instruction could result in breakdown.
- 4- Do not touch the light panel or electrical devices with wet hand. Failure to observe this instruction could result in electrical shocks and severe injuries.
- 5- Do not subject this light panel to outdoor, high humid and vaporized area. Failure to observe this instruction could result in breakdown.
- 6- Keep this out of the direct rays of the sun. Failure to observe this instruction could result in color changes of acrylic plate.
- 7- Keep away from fire or severe hot place. Acceptable ambient temperature is max.35°C Failure to observe this instruction could result in shorten the life time and degradation of brightness of LED light source.

• Please inform the order number on the product or on the carton (e.g. 1/110001394-460) to the place that you have made the purchase if any problem with the product occurs.

• All rights reserved. All pictures, figures and writings are secured internationally by copy-right law. Infringements will be sued by civil and legal law.

This technical sheet's contents are all subject to update and modification at MT Displays' exclusive discretion. There is nothing official about this document. For final and legally binding information, please get in touch with the sales staff at MT Displays.



T: +1 855-478-0652 / info@mtdisplaysllc.com / www.mtdisplaysllc.com