

## AL MAKI



## DOUBLE SIDED SIDEWALK SIGNS WITH HEAVY LONG FEET

A double-sided customer stopper, practical to change the poster within. 22" x 28" sizes are available. 1.25" profile, snap frame. Round or mitred corner options.

### KEY SELECTION ATTRIBUTES

- \* Double-sided Pavement Sign with 1.25" frame Snap-Open design
- \* Suitable for poster sizes 22" x 28"
- \* One set includes double sided snap open frames with round or mitred corner options, 2 anti-reflex poster covers and heavy long feet for keeping the system stable.
- \* Natural silver-anodized, black in standard

- and various RAL colors available with antimicrobial powder coating.
- \* Packed unassembled.



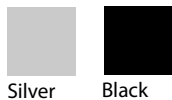
Round Corner



Mitred Corner



## COLOURS IN STOCK



Silver Black

## COLOUR OPTIONS

Black Anodised

Silver Anodised

White - RAL 9003

Black - RAL 9005

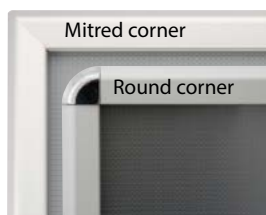
Red - RAL 3020

Blue - RAL 5002

Green - RAL 6029

Yellow - RAL 1021

## CORNER TYPES



## SUITABLE FOR

Al Maki signs can be used for INDOOR and OUTDOOR applications, for signage needs in many locations like shopping centers, markets, groceries, hotels, offices airports, shops and stores, hospitals, schools, apartments and many more.

## WATCH VIDEO



Watch video at our website  
[www.mtdisplaysllc.com](http://www.mtdisplaysllc.com)

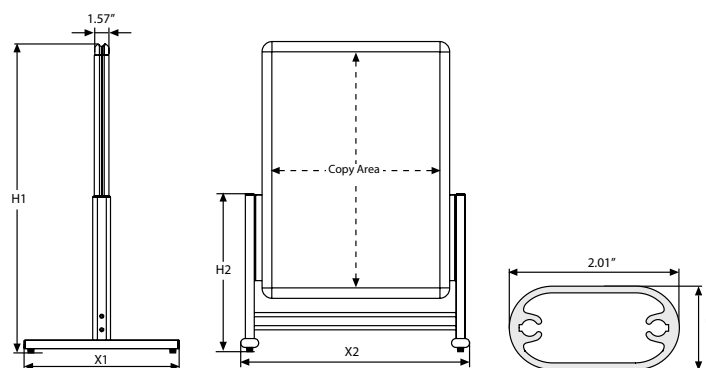
## FEATURES



## EXPLODED VIEW



## TECHNICAL DRAWING



## ARTICLES

ARTICLE	POSTER	X1	X2	H1	H2	WEIGHT	PACKING SIZE
						WITH PACKING	*W X H X D
UAM321CN22	22" X 28"	24.41"	28.35"	34.65"	18.11"	13.668 lbs	25.98" X 33.46" X 2.76"

## PHYSICAL DATA

### Material

1.25" aluminium profile click clack snap open frame, PET anti-reflex poster cover, PS backing and 22" x 28"mm silver anodised aluminum profile feet.

### Poster Material & Thickness

0.0039" - 0.0078" for standard product. Max poster thickness 0.118" for mitred corner, 0.078" for round corner. Any non-standard poster thicknesses should be indicated with order.

### Surface Finish

Natural silver-anodized, or black in standard and various RAL colors available with antimicrobial powder coating. Call for custom color requests.

### Recycled Content

Up to 78% recycled content used.

### Warranty

All products are guaranteed for 2 years by MT Displays with below conditions:

[Warranty Conditions](#)

### Installation Considerations

Al Maki Signs are packed unassembled with an easy-to-understand instruction sheet & fixing set. One set includes double sided snap open frames, 2 anti-reflex poster covers, PS backing and heavy long feet on the base. Suitable for rainy conditions, protect the poster within. Thick & solid backing for outdoor use.

### Storage Conditions

Goods should be stored at 32°F to 77°F in a dry place. Store in the original package.

### Design Considerations

Double-sided Pavement Sign with "Click Clack" snap-open design. Suitable for silk screen printing, max. letter height is 0.62". Suitable for 22" x 28" poster sizes with round or mitred corner options. Heavy long feet on the base provides stability.

### Cleaning and Disinfecting

Clean your displays, with damp microfiber clothes, rinsed with simply water or warm, soapy or gentle shampooed water. Avoid using vinegar, abrasive, acidic, alcohol-based or heavy cleaners or cleaners containing Ammonia. Only after cleaning the product, if needed, simply apply disinfectant or sanitizer that is in compliance with your local guidelines and regulations.



T: +1 855-478-0652 / [info@mtdisplaysllc.com](mailto:info@mtdisplaysllc.com) / [www.mtdisplaysllc.com](http://www.mtdisplaysllc.com)

# PRINT TEMPLATES

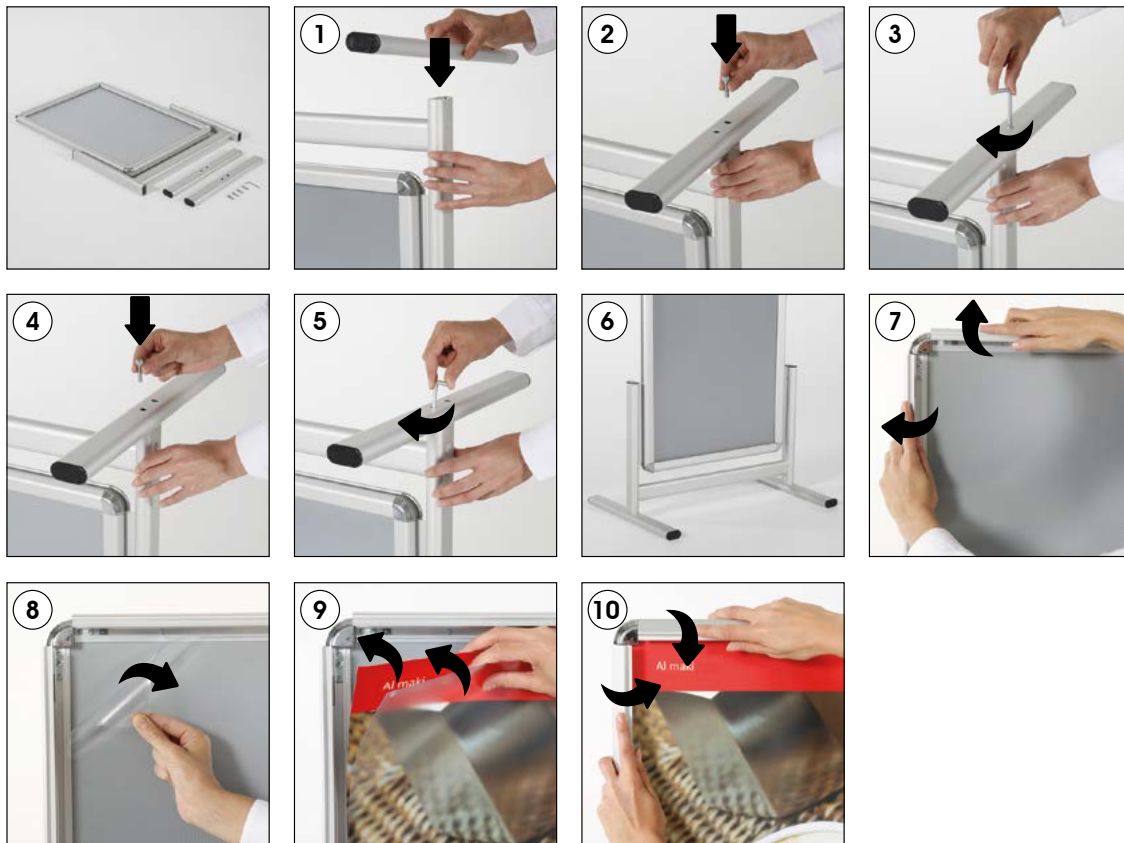
**Al Maki - 22" x 28"**

**Document Size:** 22.4" x 28.4" (Includes Bleeds)

**Finished Size:** 22" x 28" (558.8 x 711.2 mm)

## INSTALLATION INSTRUCTIONS

**Al Maki / 1001885**



Each Al Maki includes mounting accessories  
(4 screws & 1 allen key)

- Please inform the order number on the product or on the carton (e.g. 1/110001394-460) to the place that you have made the purchase if any problem with the product occurs.
- All rights reserved. All pictures, figures and writings are secured internationally by copy-right law. Infringements will be sued by civil and legal law.



This technical sheet's contents are all subject to update and modification at MT Displays' exclusive discretion. There is nothing official about this document. For final and legally binding information, please get in touch with the sales staff at MT Displays.



T: +1 855-478-0652 / [info@mtdisplaysllc.com](mailto:info@mtdisplaysllc.com) / [www.mtdisplaysllc.com](http://www.mtdisplaysllc.com)