

## ACRYLED FOR WALL MOUNTING



## UNIQUE AD SIGNS WITH SLIM DESIGN AND HOMOGENOUS ILLUMINATION

Ultra slim and clear Acryled. The edge-lit acryled mounts portrait or landscape for various types of signage. Edge-lit Acryled lights up poster in sizes of A1, A2, A3, A4. Acryled lit with LEDs use less power than traditional illuminated signage. Poster is placed in between the specially treated acrylic & cover acrylic sheet & fixed in position by two clear clips on two short sides. Products is available in 2 colours; silver and black. Compared to traditional articles in the market, Acryled provides easy poster change when unit keeps mounted on the wall.

## KEY SELECTION ATTRIBUTES

- \* Single-sided, wall mounted, edge-lit lightbox with a practical and slim acrylic design and long lasting LED technology bulbs.
- \* AcryLed's lightweight design and low voltage requirements allow it to be mounted anywhere there's access to regular electrical outlet.
- \* This edge-lit menu sign is a great alternative to neon lighted displays or other light boxes. Saves up to 60% energy cost with an increased life expectancy.
- \* AcryLed does not get heated like other illuminated displays.
- \* High illumination is achieved by improved LED technology and laser surface treatment, giving an impressive effect to grab the passers-by. LED bulbs are not seen from outside, since they are embedded in sides of the acrylic board.
- \* Suitable for INDOOR applications with 17.56" Circle, 27.56"x13.78" Ellipse and 8.5" X 11", 11" x 17" Rectangular poster sizes in optional portrait and landscape positions.
- \* Poster is placed between the specially treated acrylic back board & acrylic cover board, fixed in position by two clear clips on two short sides.
- \* Using translucent poster material is recommended for printing the signage, yet posters can be printed on an office computer.
- \* Supplied with Quality Certificates and CE/UL PAT test reports passed.
- \* Clear acrylic boards with black or silver borders in standard and various RAL colors available.
- \* One set includes a specially treated clear acryled back board with 4 slots, embedded LED bulbs in sides to diffuse light across graphics and two clear clips to hold the poster on short sides; 1 acryled front cover with borders and 4 slots; 4 connecting screws, 4 screws and 4 anchors for wall mounting; 98.43" long power adapter cable and 1 EU Plug. UK and US plugs are available, should be specified with order.
- \* Has no switch button. Optional dimmer is available. Adjusting the light from dark to max lux of LED illuminated frame.
- \* For using LED frame 24 hours in 7 days, please ask for special 7/24 power supplies.
- \* Packed with an easy mounting instruction sheet & fixing set.



Square



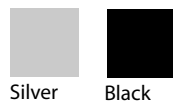
Circle



Elliptical



## COLOURS IN STOCK



Silver Black

## COLOUR OPTIONS

Black Anodised

Silver Anodised

Black - RAL 9005

White - RAL 9003

Red- RAL 3020

Blue - RAL 5002

Green - RAL 6029

Yellow - RAL 1021

## WATCH VIDEO

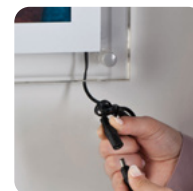
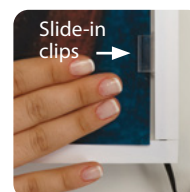
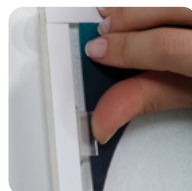


Watch video at our website  
www.mtdisplaysllc.com

## SUITABLE FOR

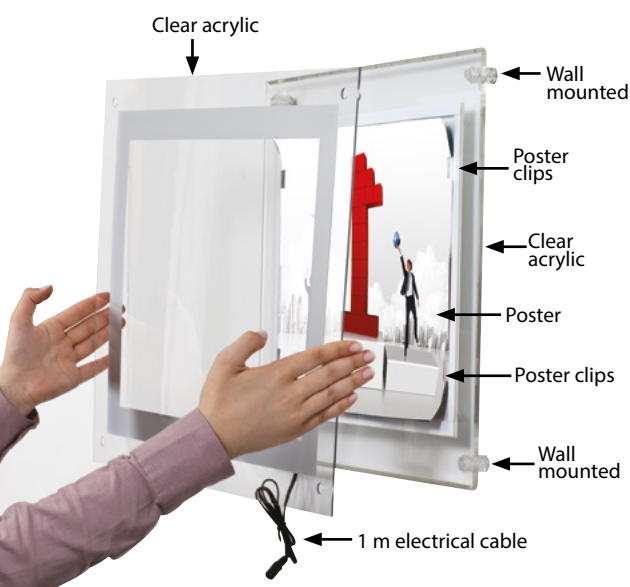
Acrylic for Wall Mounting can be used for INDOOR applications, for signage needs in many locations like shopping centers, markets, groceries, hotels, offices airports, shops and stores, hospitals, schools, apartments, restaurants, halls, meeting rooms, gas stations and many more.

## FEATURES

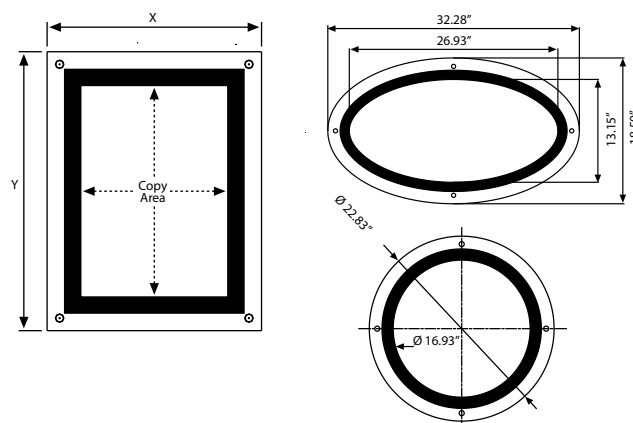


Electrical cable

## EXPLODED VIEW



## TECHNICAL DRAWING



## ARTICLES

ARTICLE	EXTERNAL (x-y)	POSTER	COPY	DESCRIPTION	WEIGHT	PACKING SIZE
					WITH PACKING	*W X H X D
UACLYN0000	Ø22.83"	Ø 17.56"	Ø 16.93"	Circle - Silver	12.13 lbs	24.8" X 27.56" X 2.95"
UACLYB0000	Ø22.83"	Ø 17.56"	Ø 16.93"	Circle - Black	12.13 lbs	24.8" X 27.56" X 2.95"
UACLEN0000	32.28" X 18.5"	27.56" X 13.78"	26.93" X 13.15"	Elliptical - Silver	14.33 lbs	20.47" X 36.61" X 2.95"
UACLEB0000	32.28" X 18.5"	27.56" X 13.78"	26.93" X 13.15"	Elliptical - Black	14.33 lbs	20.47" X 36.61" X 2.95"
UACLON0081	12.95" X 15.47"	8.5" X 11"	7.87" X 10.39"	Square - Silver	4.850 lbs	14.17" X 19.69" X 2.76"
UACLON0017	15.47" X 21.46"	11" X 17"	10.39" X 16.38"	Square - Silver	7.716 lbs	17.72" X 24.41" X 2.76"
UACLOB0081	12.95" X 15.47"	8.5" X 11"	7.87" X 10.39"	Square - Black	4.850 lbs	14.17" X 19.69" X 2.76"
UACLOB0017	15.47" X 21.46"	11" X 17"	10.39" X 16.38"	Square - Black	7.716 lbs	17.72" X 24.41" X 2.76"

## OPTIONAL ACCESSORIES



Optional dimmer to go with LED illuminated frame.. Simply jack the dimmer in frame and then into powersupply. It adjust the light from dark to max lux of LED illuminated frame. / UYUP445550



T: +1 855-478-0652 / info@mtdisplaysllc.com / www.mtdisplaysllc.com

## PHYSICAL DATA

### Material

Clear acrylic back and front boards.

### Poster Material

Using translucent poster material is recommended for printing the signage, yet posters can be printed on an office computer. Poster is placed between the specially treated acrylic back board & acrylic cover board, fixed in position by two clear clips on two short sides.

### Surface Finish

Clear acrylic back and front boards with black or silver borders in standard and various RAL colors available.

### Recycled Content

Up to 40% recycled content used.

### Warranty

All products are guaranteed for 2 years by MT Displays with below conditions:  
[Warranty Conditions](#)

### Storage Conditions

Goods should be stored at 32° to 77°F in a dry place. Store in the original package.

### Design Considerations

Single-sided, wall mounted, edge-lit lightbox with a practical and slim acrylic design and long lasting LED technology bulbs. Suitable for INDOOR applications with Ø17.56" Circle, 27.56"x13.78" Ellipse and 8.5"x11", 11"x17" Rectangular poster sizes in optional portrait and landscape positions. AcryLed's lightweight design and low voltage requirements allow it to be mounted anywhere there's access to regular electrical outlet. This edge-lit menu sign is a great alternative to neon lighted displays or other light boxes. Saves up to 60% energy cost with an increased life expectancy. AcryLed does not get heated like other illuminated displays. High illumination is achieved by improved LED technology and laser surface treatment, giving an impressive effect to grab the passers-by. LED bulbs are not seen from outside, since they are embedded in sides of the acrylic board.

### Installation Considerations

AcryLed for Wall mounting is packed with an easy mounting instruction sheet & fixing set. Supplied with Quality Certificates and CE/UL PAT test reports passed. One set includes a specially treated clear acryled back board with 4 slots, embedded LED bulbs in sides to diffuse light across graphics and two clear clips to hold the poster on short sides; 1 acryled front cover with borders and 4 slots; 4 connecting screws, 4 screws and 4 anchors for wall mounting; 98.43" long power adapter cable and 1 EU Plug. UK and US plugs are available, should be specified with order. Has no switch button. Optional dimmer is available. Adjusting the light from dark to max lux of LED illuminated frame. For using LED frame 24 hours in 7 days, please ask for special 7/24 power supplies.

### Cleaning and Disinfecting

Clean your displays, with damp microfiber clothes, rinsed with simply water or warm, soapy or gentle shampooed water. Avoid using vinegar, abrasive, acidic, alcohol-based or heavy cleaners or cleaners containing Ammonia. Only after cleaning the product, if needed, simply apply disinfectant or sanitizer that is in compliance with your local guidelines and regulations.

## PRINT TEMPLATES

### AcryLed for Wall Mounting - Ø 446

Document Size: Ø 456 (Includes Bleeds)

Finished Size: Ø 446 [Print](#)

### AcryLed for Wall Mounting - 27.56"x13.78"

Document Size: 27.95" x 14.17" (Includes Bleeds)

Finished Size: 27.56" x 13.78" [Print](#)

### AcryLed for Wall Mounting- 8.5"x11"

Document Size: 8.9" x 11.4" (Includes Bleeds)

Finished Size: 8.5"x11" (215.9x279.4 mm) [Print](#)

### AcryLed for Wall Mounting - 11"x17"

Document Size: 11.4" x 17.4" (Includes Bleeds)

Finished Size: 11"x17" (279.4x431.8 mm) [Print](#)

## ILLUMINATED PRODUCTS TECHNICAL MANUAL

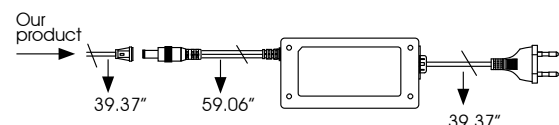
### DIMMER

Optional dimmer to go with LED illuminated frame. Simply jack the dimmer in frame and then into powersupply. It adjust the light from dark to max lux of LED illuminated frame. Dimming: %10-%100, on/off



### POWER SUPPLY

- 12 V DC
- Complete with power supply
- 2 year guaranteed
- 7/16 use
- If 7/24 use required, please order individually.

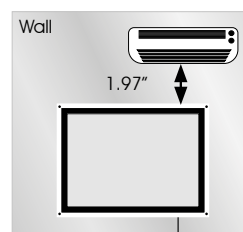


### TECHNICAL SPECIFICATION

Max: 33.46" X 47.24"

SILVER	BLACK	POSTER	DESCRIPTION	ACRYLIC THICKNESS	ILLUMINATION	POWER CONSUMPTION	POWER SUPPLY RECOMMENDED
UACLON0017	UACLOB0017	11" x 17"	Square	0.31"	2400 - 2600 LUX	18 W / 1.44 A	2 A
UACLYN0000	UACLYB0000	Ø 17.56"	Circle	0.39"	2500 - 3000 LUX		
UACLBN0000	UACLEB0000	27.56" X 13.78"	Elliptical	0.39"			

### CAUTION



35°C Indoor maximum temperature (incl. daily sunny hours.) It should be assembled 1.18" from the window.

### LED FEATURES (Duris E 2835)

Led dimentions: 0.12" x 0.06"

Processing technology: White SMT package, colored diffused silicone resin

Viewing angle at 50 % IV: 120°

Color: 2700 K - 6500 K (warm, neutral and cool white)

CRI: 84 - 88

Luminous flux: Typ. 30 lm @ 6500K

Luminous efficacy: Typ. 153 lm / W @ 6500 K

Lumen maintenance: Typ. 169 lm / A @ 6500 K

Life time: 50.000 hours

OSRAM



T: +1 855-478-0652 / [info@mtdisplaysllc.com](mailto:info@mtdisplaysllc.com) / [www.mtdisplaysllc.com](http://www.mtdisplaysllc.com)

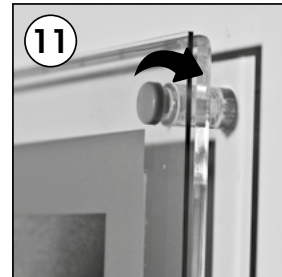
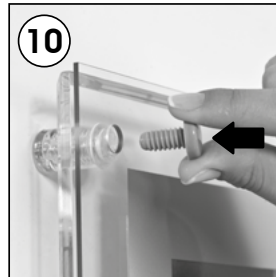
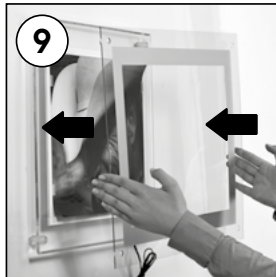
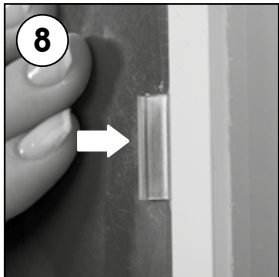
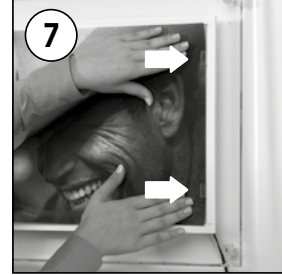
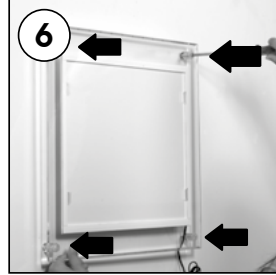
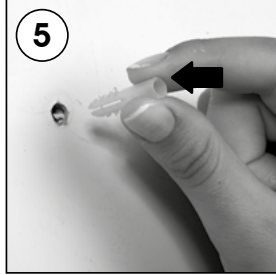
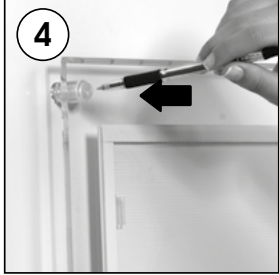
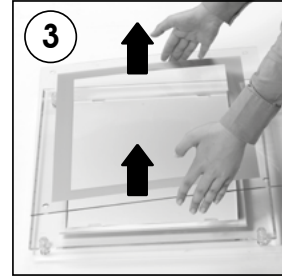
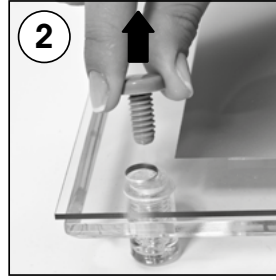
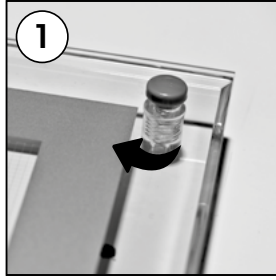


# INSTALLATION INSTRUCTIONS

## AcryLed for Wall Mounting / 1006951

### Each product includes wall mounting accessories

- 1 x Acryled front panel
- 1 x Acryled back panel
- 4 x Connecting screw
- 1 x Adapter cable
- 4 x Screws
- 4 x Anchors



- Please inform the order number on the product or on the carton (e.g. 1/110001394-460) to the place that you have made the purchase if any problem with the product occurs.
- All rights reserved. All pictures, figures and writings are secured internationally by copy-right law. Infringements will be sued by civil and legal law.

This technical sheet's contents are all subject to update and modification at MT Displays' exclusive discretion. There is nothing official about this document. For final and legally binding information, please get in touch with the sales staff at MT Displays.



T: +1 855-478-0652 / [info@mtdisplaysllc.com](mailto:info@mtdisplaysllc.com) / [www.mtdisplaysllc.com](http://www.mtdisplaysllc.com)